

Houston Pilots Forecast Package



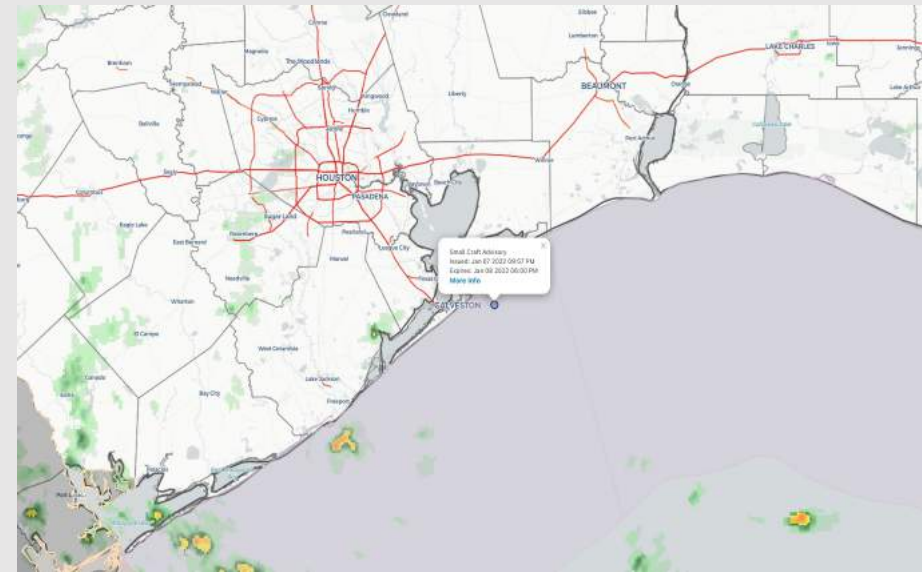
Updated: 5:00 AM CT

Saturday, January 8, 2022

Forecaster: Matt Griffin

Weather Headlines

- Storm possible today. A few stronger storms possible (wind gusts/ tornadoes possible)
- Low confidence fog threat through tomorrow morning
- Winds shift out of the north as a cold front passes with elevated winds through Monday



Radar/ NWS Alerts: 4:55 AM CT



As always, please do not hesitate to reach out to us with any forecast questions via the chat option on the Weather Porthole or our on-call number, **(317)-560-8122** press 1 for forecast questions.

Houston Pilots Visibility Report



Time	01-08-2022 Sat 3am	01-08-2022 Sat 6am	01-08-2022 Sat 9am	01-08-2022 Sat 6am	01-08-2022 Sat 7am	01-08-2022 Sat 8am	01-08-2022 Sat 9am	01-08-2022 Sat 10am	01-08-2022 Sat 11am	01-08-2022 Sat 12pm	01-08-2022 Sat 1pm	01-08-2022 Sat 2pm	01-08-2022 Sat 3pm	01-08-2022 Sat 4pm	01-08-2022 Sat 5pm	01-08-2022 Sat 6pm	01-08-2022 Sat 7pm	01-08-2022 Sat 8pm	01-08-2022 Sat 9pm	01-08-2022 Sat 10pm	01-08-2022 Sat 11pm	01-09-2022 Sun 12am	01-09-2022 Sun 1am	01-09-2022 Sun 2am	01-09-2022 Sun 3am	01-09-2022 Sun 4am	01-09-2022 Sun 5am	01-09-2022 Sun 6am	01-09-2022 Sun 7am	01-09-2022 Sun 8am	01-09-2022 Sun 9am	01-09-2022 Sun 10am	01-09-2022 Sun 11am	01-09-2022 Sun 12pm	01-09-2022 Sun 1pm	01-09-2022 Sun 2pm	
ouston Pilots N - 610 Bridge	10.000	10.000	8.988	8.309	6.935	4.902	4.902	6.915	6.935	9.038	9.038	10.000	10.000	10.000	9.038	9.038	9.033	7.919	6.930	5.930	6.513	5.976	5.931	6.514	6.514	4.897	4.615	3.897	0.940	0.239	1.591	3.897	6.964	6.964	10.000	10.000	10.000
ouston Pilots M - Kinder 1	10.000	10.000	8.988	8.444	6.935	4.902	4.902	6.919	6.935	9.038	9.038	10.000	10.000	10.000	9.038	9.038	9.033	7.939	7.178	6.449	6.513	6.474	6.474	6.514	6.514	4.897	4.612	4.215	2.636	1.491	2.664	4.983	6.964	6.964	10.000	10.000	10.000
ouston Pilots L Greens Bayou	10.000	10.000	8.988	7.924	6.893	4.902	4.902	6.915	6.923	9.038	9.038	10.000	10.000	10.000	9.038	9.038	9.033	7.966	7.539	7.146	7.146	7.145	6.780	6.355	6.355	5.114	5.156	5.501	4.912	3.600	3.780	6.325	7.453	10.000	10.000	10.000	
ouston Pilots K - Shell Crude	10.000	10.000	8.988	8.447	6.893	4.902	4.902	6.919	6.919	9.038	9.038	10.000	10.000	10.000	9.038	9.038	9.033	7.966	7.999	7.811	7.811	7.999	7.901	6.011	5.963	6.011	6.011	7.358	8.033	6.187	3.780	7.811	8.033	10.000	10.000	10.000	
ouston Pilots J - Lynchburg Ferries	10.000	10.000	8.988	7.924	6.890	4.902	4.902	6.890	6.918	9.038	9.038	10.000	10.000	10.000	9.038	9.038	9.033	7.966	7.999	7.811	7.811	7.999	7.934	6.011	5.931	6.151	6.151	7.358	8.033	6.999	3.780	7.811	8.033	10.000	10.000	10.000	
ouston Pilots I - Exxon 3	10.000	10.000	8.988	8.447	6.890	4.902	4.902	6.890	6.918	9.038	9.038	10.000	10.000	10.000	9.038	9.038	9.033	7.966	7.999	7.811	7.811	7.999	7.934	6.393	5.965	6.965	6.965	7.358	8.033	6.999	3.780	7.811	8.033	10.000	10.000	10.000	
ouston Pilots H Morgans Point	10.000	10.000	8.988	9.038	6.890	4.902	4.902	6.890	6.918	9.038	9.038	10.000	10.000	10.000	9.038	9.038	9.033	7.966	7.999	7.811	7.811	7.999	7.999	7.370	6.725	6.965	6.965	7.811	8.033	7.770	3.780	7.811	8.407	10.000	10.000	10.000	
ouston Pilots G - 75/76	10.000	10.000	8.988	9.038	6.890	4.902	4.902	6.890	7.924	9.038	9.038	10.000	10.000	10.000	9.038	9.038	9.033	7.966	7.999	7.811	7.811	7.999	7.934	7.370	6.725	6.965	6.965	7.811	8.033	7.456	3.780	7.811	8.407	10.000	10.000	10.000	
ouston Pilots F - 63/64	10.000	10.000	8.988	9.038	6.890	4.902	5.936	6.890	7.924	9.640	9.038	10.000	10.000	10.000	9.038	9.038	9.033	7.919	7.999	7.811	7.811	7.999	7.934	7.370	6.725	6.965	6.965	7.811	8.033	6.999	5.547	7.811	8.407	10.000	10.000	10.000	
ouston Pilots E - 51/52	10.000	10.000	8.988	8.727	6.890	4.902	5.936	6.890	7.924	10.000	9.038	10.000	10.000	9.783	9.038	9.038	9.033	7.919	7.845	7.811	7.811	7.999	6.965	7.370	6.483	6.965	6.535	7.811	7.880	6.534	6.723	7.811	8.407	10.000	10.000	10.000	
ouston Pilots D - 37/38	10.000	10.000	8.988	7.924	6.890	5.235	6.685	6.890	7.924	10.000	9.038	10.000	10.000	9.038	9.038	9.038	9.033	7.919	6.937	7.631	7.631	7.599	6.890	7.599	7.599	7.887	7.562	7.596	7.524	7.426	8.033	7.921	8.265	9.862	9.862	10.000	
ouston Pilots C - 25/26	10.000	10.000	8.988	7.836	6.890	5.936	6.890	6.938	7.924	10.000	9.038	10.000	9.038	9.038	8.943	8.943	7.919	7.919	7.677	8.033	8.033	7.999	7.842	7.999	7.999	7.999	7.999	7.999	8.033	8.033	8.033	8.033	8.033	8.988	8.988	8.988	8.988
ouston Pilots B - 11/12	10.000	10.000	8.988	6.938	6.890	5.936	6.890	6.938	7.924	10.000	9.038	10.000	9.038	9.038	7.924	7.924	7.999	7.999	7.999	8.033	8.033	7.999	7.999	7.999	7.999	7.999	7.999	7.999	8.033	8.033	8.033	8.033	8.033	8.265	8.988	8.988	8.988
ouston Pilots A - 1 & 2 Bravo	10.000	10.000	7.954	7.924	6.890	5.936	6.890	6.890	7.924	6.890	6.890	6.890	6.890	6.890	7.568	7.924	7.999	7.999	7.999	8.033	8.033	7.999	7.999	7.999	7.999	7.999	7.309	7.359	8.033	8.033	8.033	8.033	8.033	8.988	8.988	8.033	8.033

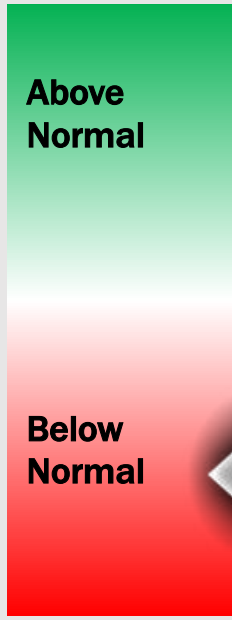
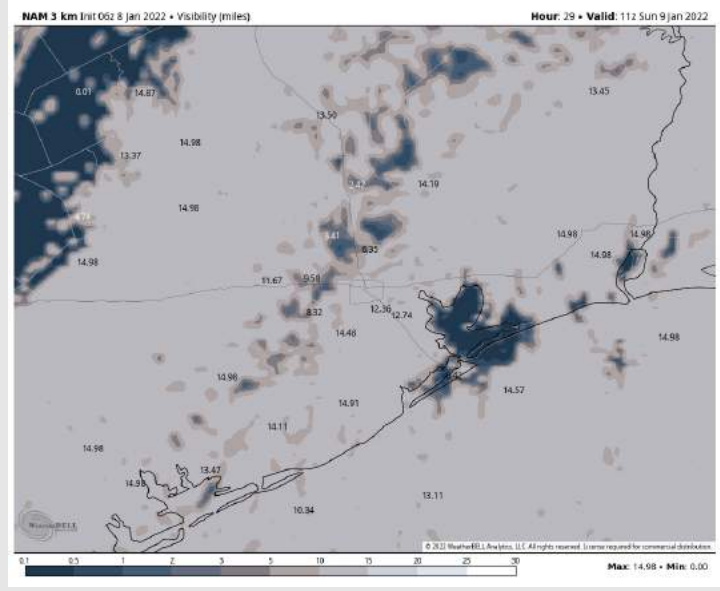
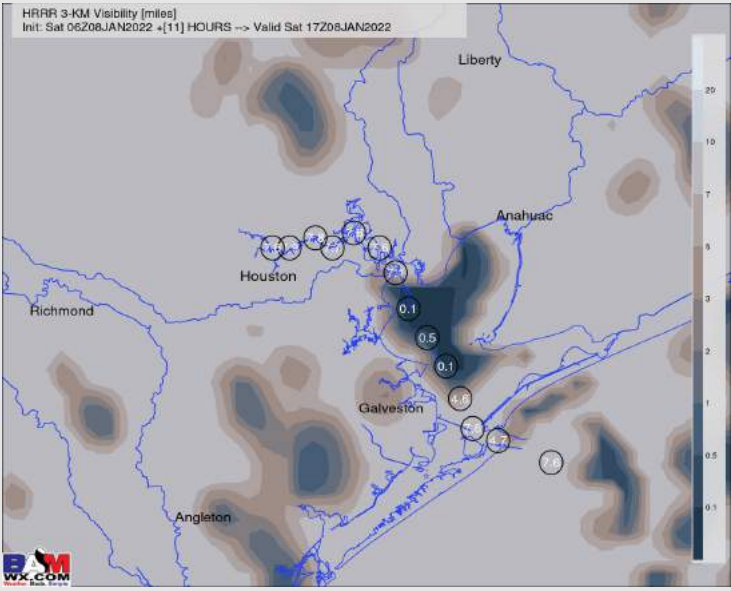
Please check out the slide below for more details on potential fog.

Houston Pilots Visibility Report



11 AM CT SAT Visibility (miles) 5 AM CT SUN Visibility (miles)

Confidence



Fog Threat

10 AM SAT ~ 10 AM SUN **Medium**

- So far this morning, the Galveston area has avoided lower visibilities/ fog.
- Moving forwards through today into tomorrow morning the threat for sea fog exists although confidence is a bit lower.
- Winds will continue to be out of the SE/ SSE for much of the day today through tomorrow morning as moist Gulf air advects over the cooler shelf waters proceeding an advancing cold front, allowing for potential fog to form.
- Visibility reductions cant be ruled out as early as 10 AM this morning but the threat increases heading deeper into the afternoon / evening hours of today as the bulk of precipitation start to shift more to the north.
- From about 5 PM today- 8 AM tomorrow morning looks to be the best threat for sea fog for all stations. The threat will diminish as a cold front passes, which is expected to be around the 11 AM - 3 PM tomorrow timeframe.
- Further complicating the situation is the possibility of storm activity getting into tomorrow morning. Storm activity around could help to mix out any potential fog around the area. And morning data varies quite a bit in regards to this activity.
- Data itself will likely struggle to see the extent of sea fog if it forms, which means the chart 1 slide above may miss on these lower visibilities as well.

Houston Pilots: Sat. 1/8/2022



Forecast Discussion

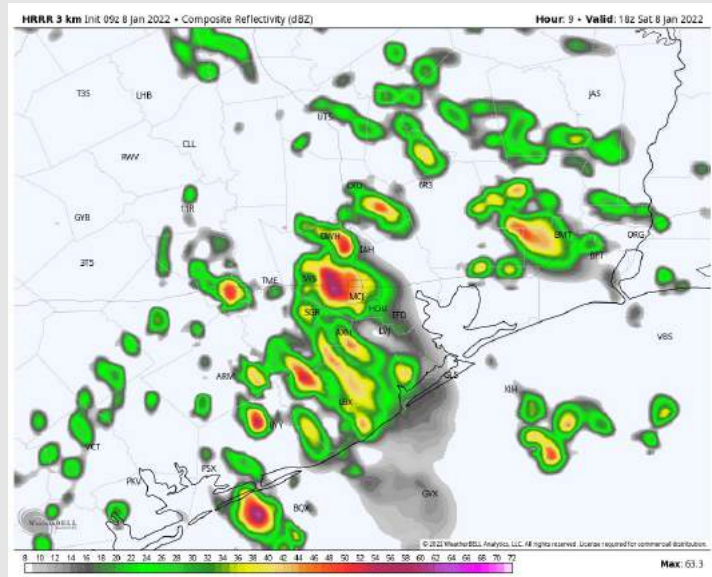
Precip: Best timeframe for storms looks to be late morning into the early afternoon (9 AM – 3 PM). Storms will be capable of heavy downpours. Its not impossible that one or two of these storms can be stronger in nature with strong wind gusts and a brief spin up tornado possible. Later in to the afternoon can feature more drier hours. However, confidence starts to decrease heading into the evening hours/ early morning hours of the storm development. Chances will at least be around from 10 PM through tomorrow morning (this will need fine-tuned in PM update). Any storms that for overnight/ tomorrow have the ability to be strong in nature as well. Chances for storm activity end as the cold front passes around the 11 AM – 3 PM timeframe tomorrow (will likely be accompanied with thunderstorms as well).

Wind: Winds continue to shift more towards the south throughout the day generally sustained out of the SSE at 13 – 18 MPH, gusts near 30 MPH possible (stronger gust in strongest of storms).

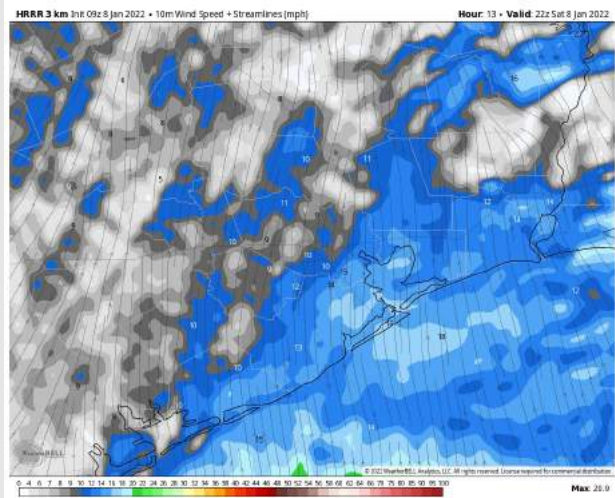
Temps: High temps look to get into the mid to upper 70's F.

Visibility: See slide above for info on the fog/reduced visibility risk for Saturday/ tomorrow morning.

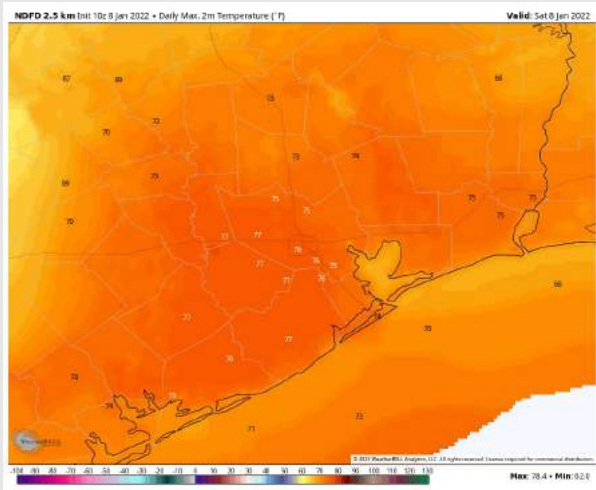
Precip Forecast: 12 PM CT



Wind Speed:
4 PM CT



High Temps
Saturday



Houston Pilots: *sun. 1/9/2022*

Forecast Discussion

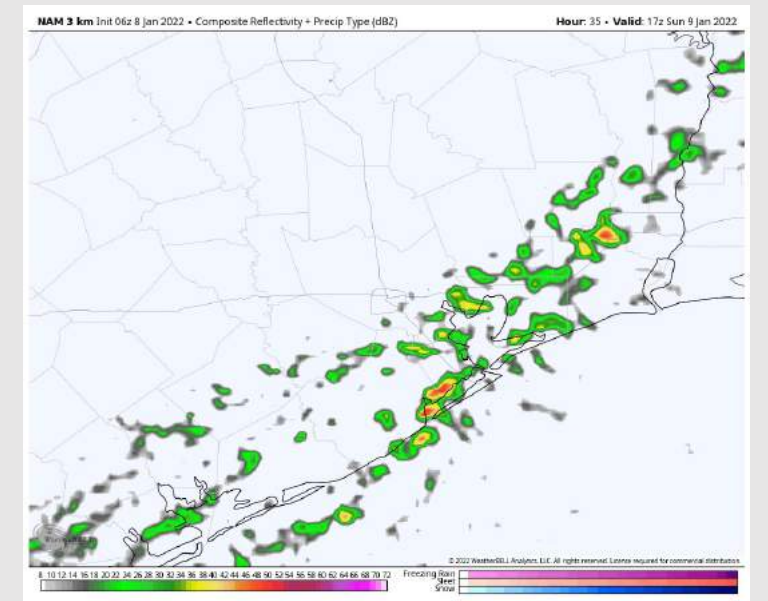
Precip: Showers and thunderstorms are possible in the AM hours preceding the passage of a cold front. The afternoon/ evening hours are anticipated to be on the drier side after this front passes, around the 11 AM – 3 PM timeframe.

Wind: As the cold front passes, winds will start to shift out of the NNW and will be on the increase. Need to watch around the 6 PM – 8 PM timeframe on Sunday for winds to pick up to 15 – 20 MPH sustained, with gusts of 30 MPH possible, especially towards the boarding station.

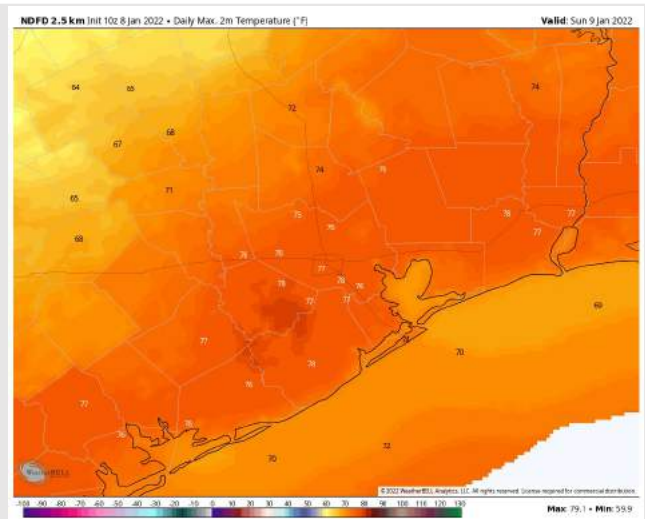
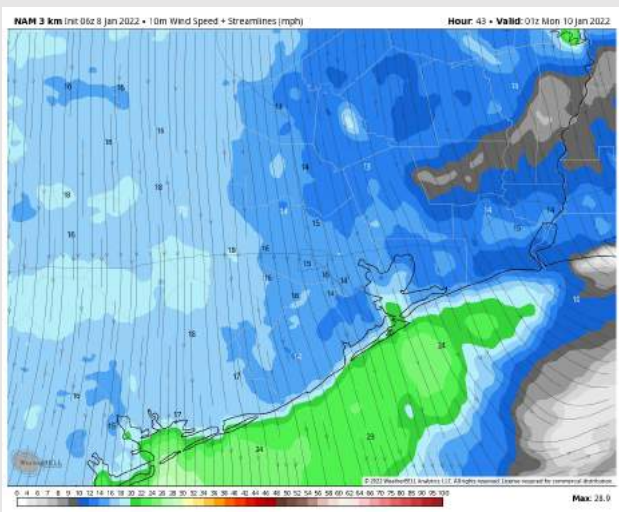
Temps: High temps look to get into the low to mid 70's on Sunday.

Visibility: See fog slide two slides above for more information.

Precip Forecast: 11 AM CT



Wind Speed 7 PM CT



High Temps Sunday

Houston Pilots: Mon. 1/10/2022



Forecast Discussion

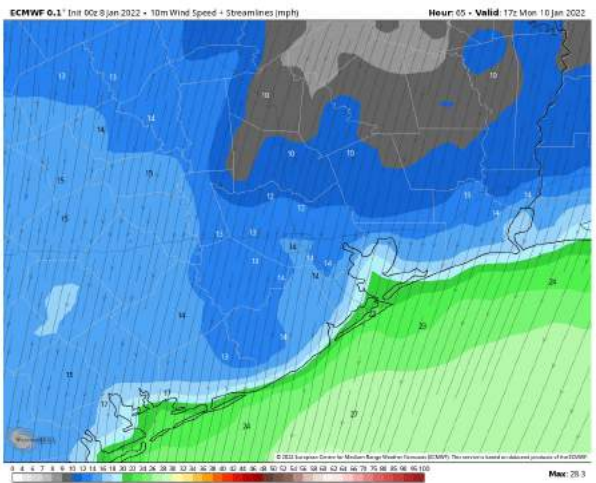
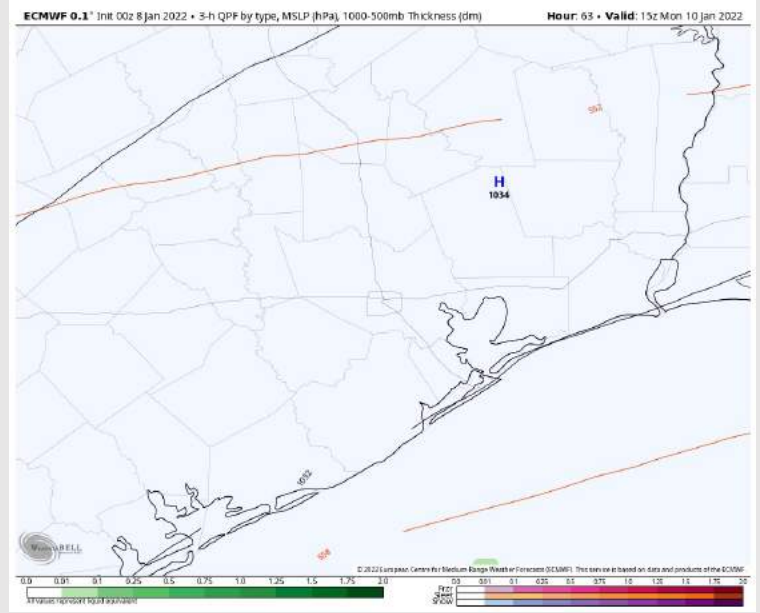
Precip Forecast: 9 AM CT

Precip: A dry day is anticipated for Monday

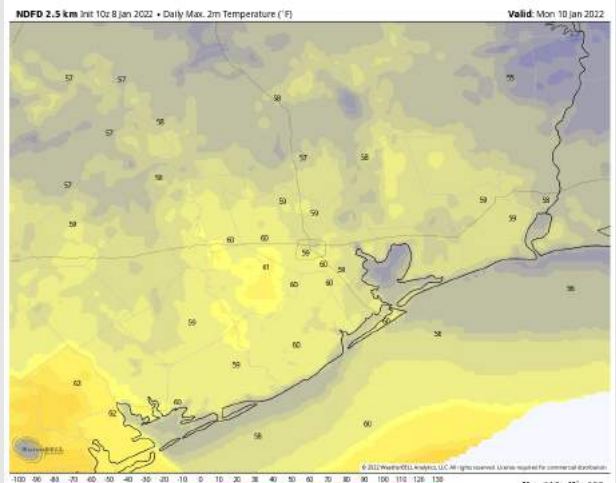
Wind: Winds will continue to be elevated on Monday out of the NNE. Winds look to be sustained around 15 – 20 MPH with gusts of 25 – 30 MPH possible.

Temps: High Temps look to be in the upper 50s to low 60s F

Visibility: Northerly/ elevated winds do not favor fog for Monday.

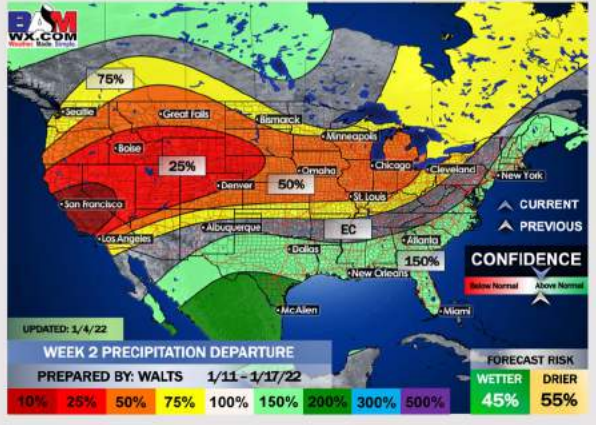
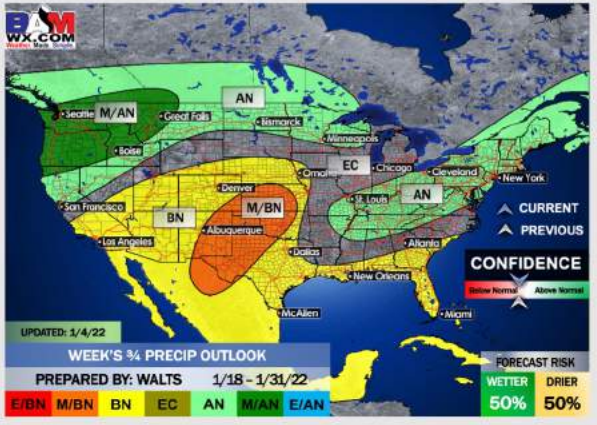
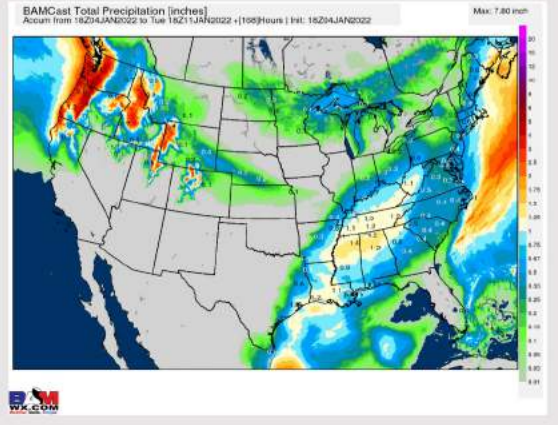
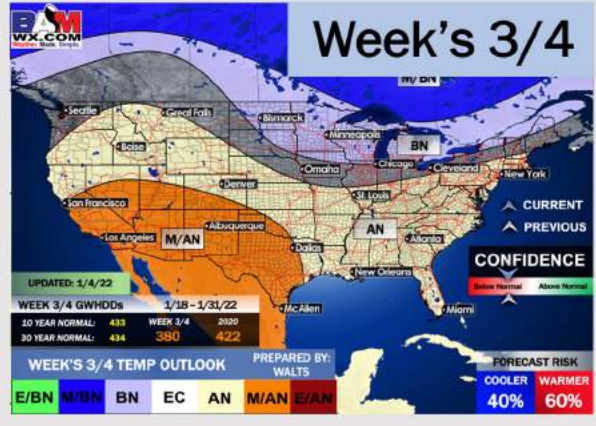
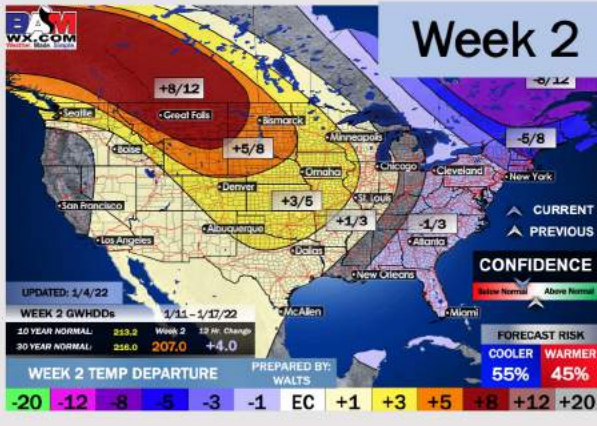
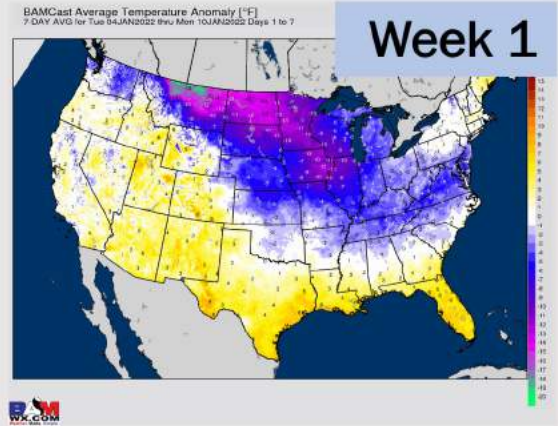


Wind Speed
11 AM CT



High Temps
Monday

Houston Pilots: 1/4/22



- Anticipating an overall dry upcoming work week. Precip chances look to come back in next weekend.
- The week 2 timeframe is expected to have slightly above normal temperatures and below normal risks for precipitation.
- Right now, we are favoring above normal risks for temperatures and below normal risks for precip for the weeks 3 and 4 timeframe.