

Houston Pilots Forecast Package



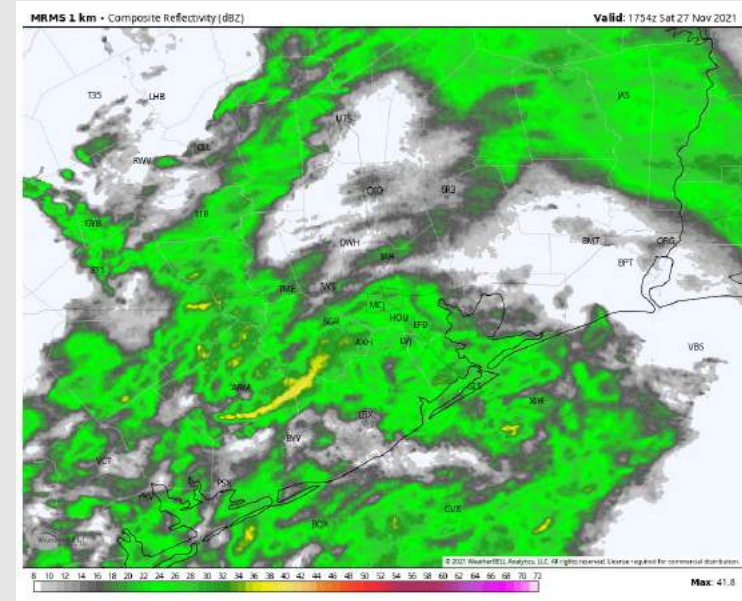
Updated: 12:00 PM CT

Saturday, November 27, 2021

Forecaster: Matt Griffin

Weather Headlines

- Showers persists into tomorrow morning.
- This week will be rather inactive with the next best shot coming FRI/ SAT.
- Slightly elevated potential for fog risks this coming Tuesday.



Radar: 11:54 AM CT



As always, please do not hesitate to reach out to us with any forecast questions via the chat option on the Weather Porthole or our on-call number, **(317)-560-8122** press 1 for forecast questions.

Houston Pilots Visibility Report



Time	11-27-2021 Sat 11am	11-27-2021 Sat 12pm	11-27-2021 Sat 1pm	11-27-2021 Sat 2pm	11-27-2021 Sat 3pm	11-27-2021 Sat 4pm	11-27-2021 Sat 5pm	11-27-2021 Sat 6pm	11-27-2021 Sat 7pm	11-27-2021 Sat 8pm	11-27-2021 Sat 9pm	11-27-2021 Sat 10pm	11-27-2021 Sat 11pm	11-28-2021 Sun 12am	11-28-2021 Sun 1am	11-28-2021 Sun 2am	11-28-2021 Sun 3am	11-28-2021 Sun 4am	11-28-2021 Sun 5am	11-28-2021 Sun 6am	11-28-2021 Sun 7am	11-28-2021 Sun 8am	11-28-2021 Sun 9am	11-28-2021 Sun 10am	11-28-2021 Sun 11am	11-28-2021 Sun 12pm	11-28-2021 Sun 1pm	11-28-2021 Sun 2pm	11-28-2021 Sun 3pm	11-28-2021 Sun 4pm	11-28-2021 Sun 5pm	11-28-2021 Sun 6pm	11-28-2021 Sun 7pm	11-28-2021 Sun 8pm	11-28-2021 Sun 9pm	11-28-2021 Sun 10pm			
Houston Pilots N - 610 Bridge	10.000	10.000	10.000	10.000	10.000	10.000	10.000	10.000	10.000	9.291	6.935	4.902	4.902	4.902	3.948	3.948	3.897	2.988	2.988	2.985	2.776	1.988	4.931	7.919	10.000	10.000	10.000	10.000	10.000	10.000	10.000	10.000	10.000	10.000	10.000	10.000	10.000	10.000	10.000
Houston Pilots M - Kinder 1	10.000	10.000	10.000	10.000	10.000	10.000	10.000	10.000	10.000	9.413	6.935	4.902	4.902	4.902	3.948	3.948	4.279	4.279	4.047	3.927	3.359	3.282	4.983	7.843	10.000	10.000	10.000	10.000	10.000	10.000	10.000	10.000	10.000	10.000	10.000	10.000	10.000	10.000	10.000
Houston Pilots L - Greens Bayou	10.000	10.000	10.000	10.000	10.000	10.000	10.000	10.000	10.000	10.000	6.923	4.902	4.902	4.902	3.948	3.948	6.214	5.930	5.930	5.930	5.733	5.536	6.885	8.146	10.000	10.000	10.000	10.000	10.000	10.000	10.000	10.000	10.000	10.000	10.000	10.000	10.000	10.000	10.000
Houston Pilots K - Shell Crude	10.000	10.000	10.000	10.000	10.000	10.000	10.000	10.000	10.000	10.000	6.919	4.902	4.902	4.902	3.948	3.948	8.033	8.033	8.033	8.033	8.033	8.033	8.988	9.033	10.000	10.000	10.000	10.000	10.000	10.000	10.000	10.000	10.000	10.000	10.000	10.000	10.000	10.000	10.000
Houston Pilots J - Lynchburg Ferries	10.000	10.000	10.000	10.000	10.000	10.000	10.000	10.000	10.000	10.000	6.929	4.902	4.902	4.902	3.948	3.948	8.033	8.033	8.033	8.033	8.033	8.033	8.988	9.033	10.000	10.000	10.000	10.000	10.000	10.000	10.000	10.000	10.000	10.000	10.000	10.000	10.000	10.000	10.000
Houston Pilots I - Exxon 3	10.000	10.000	10.000	10.000	10.000	10.000	10.000	10.000	10.000	10.000	6.929	4.902	4.902	4.902	3.948	3.948	8.033	8.033	8.033	8.033	8.033	8.033	8.988	9.033	10.000	10.000	10.000	10.000	10.000	10.000	10.000	10.000	10.000	10.000	10.000	10.000	10.000	10.000	10.000
Houston Pilots H - Morgans Point	10.000	10.000	10.000	10.000	10.000	10.000	10.000	10.000	10.000	10.000	9.038	4.902	4.902	4.902	3.948	3.948	8.033	8.033	8.033	8.033	8.033	8.033	8.988	9.033	10.000	10.000	10.000	10.000	10.000	10.000	10.000	10.000	10.000	10.000	10.000	10.000	10.000	10.000	10.000
Houston Pilots G - 75/76	10.000	10.000	10.000	10.000	10.000	10.000	10.000	10.000	10.000	10.000	9.038	4.902	4.902	4.902	3.948	3.948	8.033	8.033	8.033	8.033	8.033	8.033	8.988	9.033	10.000	10.000	10.000	10.000	10.000	10.000	10.000	10.000	10.000	10.000	10.000	10.000	10.000	10.000	10.000
Houston Pilots F - 63/64	10.000	10.000	10.000	10.000	10.000	10.000	10.000	10.000	10.000	10.000	9.038	4.902	4.902	4.902	3.948	3.948	8.033	8.033	8.033	8.033	8.033	8.397	8.988	9.033	10.000	10.000	10.000	10.000	10.000	10.000	10.000	10.000	10.000	10.000	10.000	10.000	10.000	10.000	10.000
Houston Pilots E - 61/62	10.000	10.000	10.000	10.000	10.000	10.000	10.000	10.000	10.000	10.000	9.038	5.936	4.902	4.902	3.948	3.948	8.033	8.033	8.033	8.033	8.033	8.988	8.988	9.033	10.000	10.000	10.000	10.000	10.000	10.000	10.000	10.000	10.000	10.000	10.000	10.000	10.000	10.000	10.000
Houston Pilots D - 37/38	10.000	10.000	10.000	10.000	10.000	10.000	10.000	10.000	10.000	10.000	9.038	5.936	4.902	3.948	3.948	3.948	8.033	8.033	8.033	8.033	8.632	8.988	8.988	9.033	10.000	10.000	10.000	10.000	10.000	10.000	10.000	10.000	10.000	10.000	10.000	10.000	10.000	10.000	10.000
Houston Pilots C - 25/26	10.000	10.000	10.000	10.000	10.000	10.000	10.000	10.000	10.000	10.000	9.730	5.936	4.902	3.948	3.948	3.948	8.033	8.033	8.033	8.033	8.988	8.988	8.988	9.033	10.000	10.000	10.000	10.000	10.000	10.000	10.000	10.000	10.000	10.000	10.000	10.000	10.000	10.000	10.000
Houston Pilots B - 11/12	10.000	10.000	10.000	10.000	10.000	10.000	10.000	10.000	10.000	10.000	10.000	5.936	4.902	3.948	3.948	3.948	8.033	8.033	8.033	8.033	8.988	8.988	8.988	9.033	10.000	10.000	10.000	10.000	10.000	10.000	10.000	10.000	10.000	10.000	10.000	10.000	10.000	10.000	10.000
Houston Pilots A - 1 & 2 Bravo	10.000	10.000	10.000	10.000	10.000	10.000	10.000	10.000	10.000	10.000	10.000	5.936	4.902	4.902	3.948	3.948	8.033	8.033	8.033	8.033	8.988	8.988	8.988	9.033	9.808	9.808	9.822	9.808	9.808	9.808	9.808	9.808	9.808	9.808	10.000	10.000	10.000	10.000	

Houston Pilots Extended Range Visibility Report



Tuesday, 11/30/21

Some data such as the European model is already picking up on the fog potential TUE AM. The set up is there as long as the winds remain light into TUE morning.



Wednesday, 12/1/21

The signal on Wednesday is less pronounced, but will need to keep an eye on this potential with weak winds off the Gulf Coast.



Thursday, 12/2/21

Fog forecasting becomes increasingly difficult at this distance. While fog cannot 100% be ruled out, it is not favored at this time.



Daily Fog Chance

Tuesday AM	Possible
Wednesday AM	Possible
Thursday AM	Unlikely

Houston Pilots: Sat. 11/27/2021



Forecast Discussion

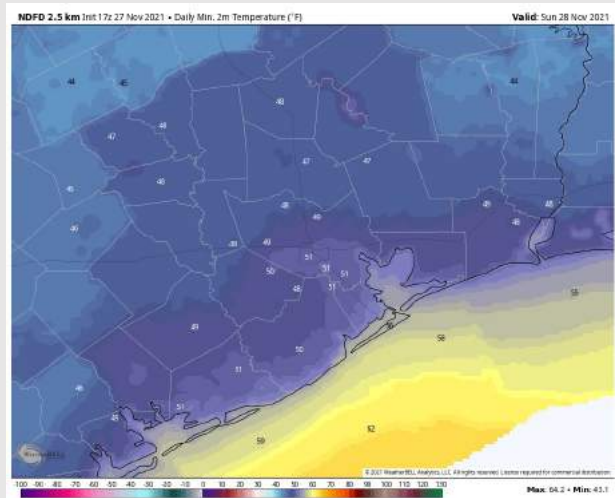
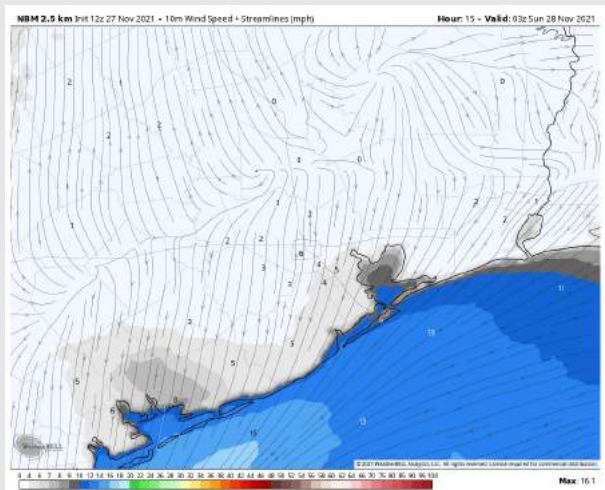
Sim Radar Snapshot: 8 PM CT

Precip: Showers look to continue to persist throughout the day before winding down Sunday AM.

Wind: Winds will have a generally northerly component for the rest of the day. NNE winds are the primary direction. Winds look to be sustained around 5 – 10 MPH.

Temps: Low temperatures into tomorrow morning look to get into the low-to-mid 50's F.

Visibility: Showers through the overnight could reduce visibilities at times.



Wind Speed:
9 PM CT

Low Temps
Sun Morning

Houston Pilots: *sun. 11/28/2021*



Forecast Discussion

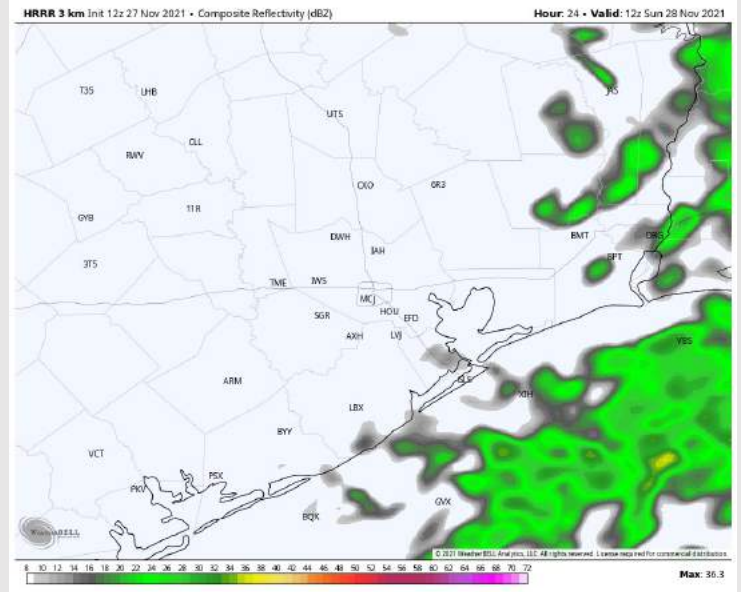
Precip: Showers continue to remain possible into tomorrow AM. This precipitation is expected to wind down around the 6 – 9 AM timeframe.

Wind: Northerly winds are expected to continue throughout Sunday. Winds look to pick up gradually into the afternoon, sustained around 8 – 13 MPH. Towards sunset tomorrow evening, winds may approach 15 MPH sustained towards the boarding station. Winds are not anticipated to be gusty.

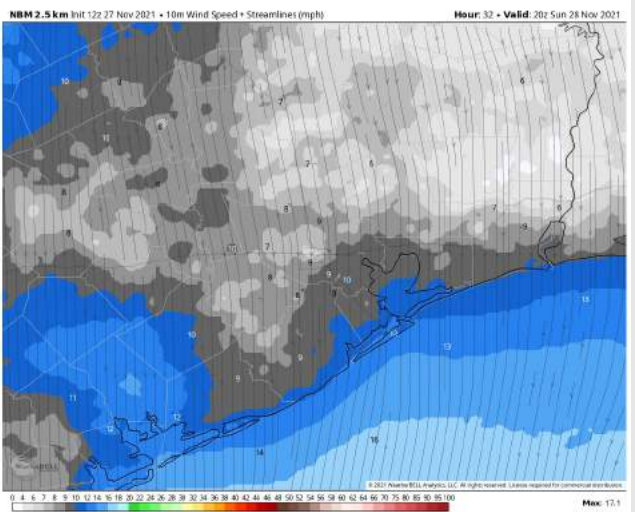
Temps: Highs look to reach the lower-to-mid 60s F.

Visibility: Showers in the AM may reduce visibilities slightly. However no fog is anticipated Sunday morning.

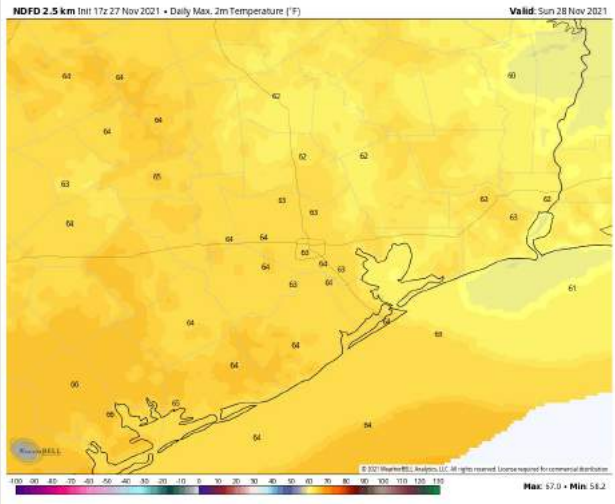
Sim Radar Snapshot: 4 AM CT



Wind Speed
2 PM CT



High Temps
Sunday



Houston Pilots: Mon. 11/29/2021



Forecast Discussion

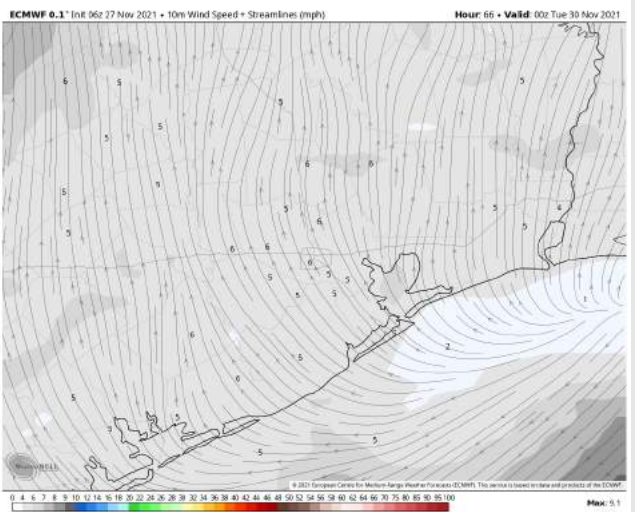
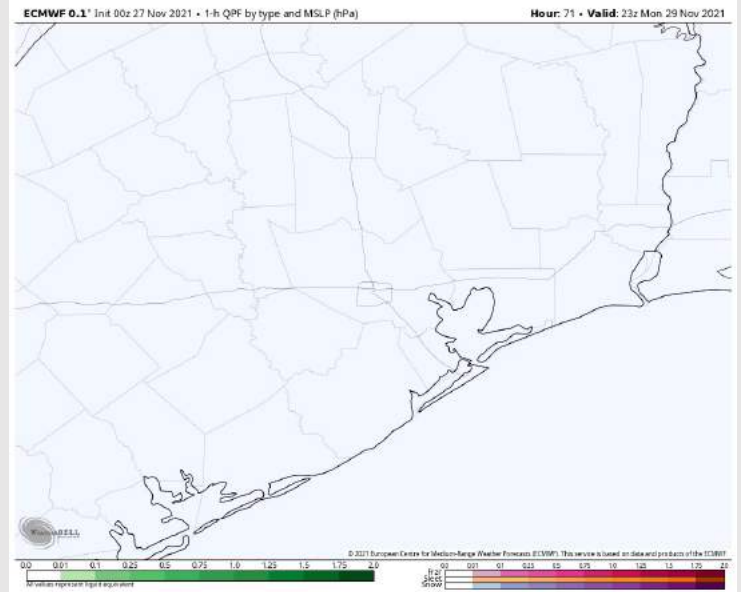
Precip: Monday is anticipated to be a dry day across the HOU area.

Wind: Northerly winds in the AM should be gradually weakening before a wind shift occurs into the afternoon. Winds look to be rather light, sustained around 3 – 8 MPH into the afternoon/ evening.

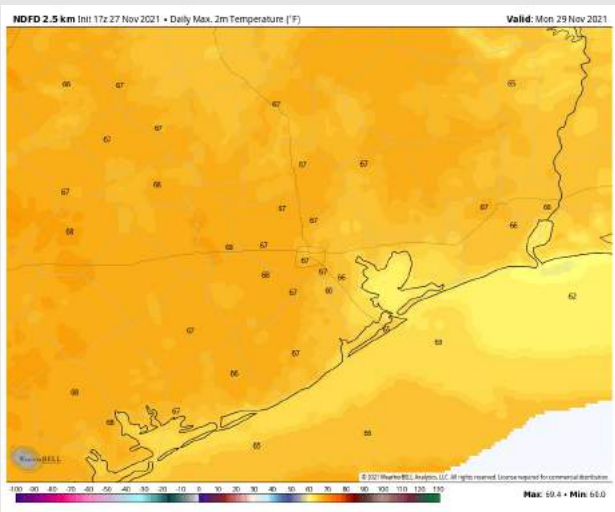
Temps: Highs look to reach the low to mid 60s F.

Visibility: At this distance, not favoring fog for our station on Monday but will need to keep an eye to see if fog can creep into northern stations where winds would be the lightest.

Sim Radar Snapshot: 4 PM CT

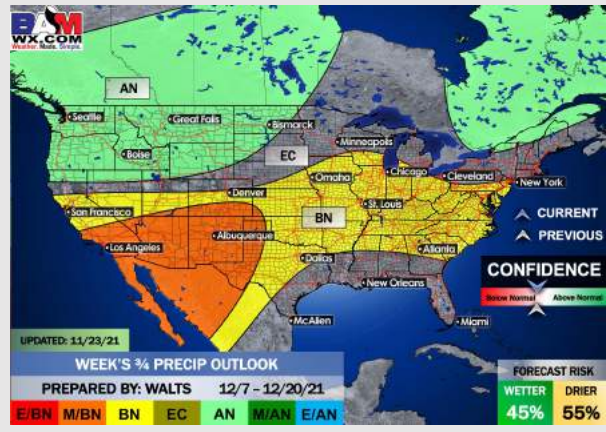
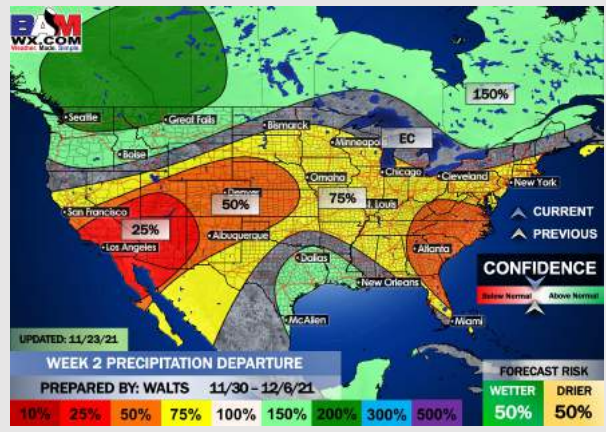
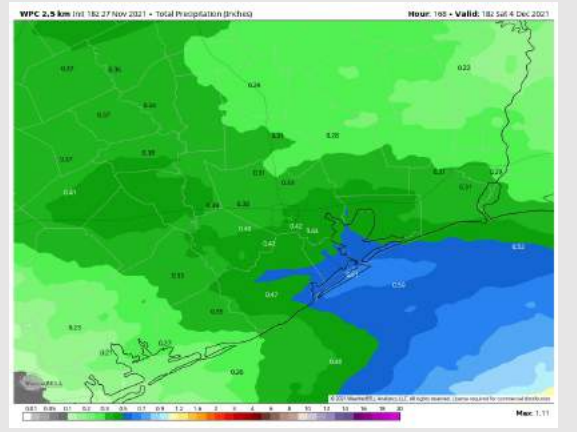
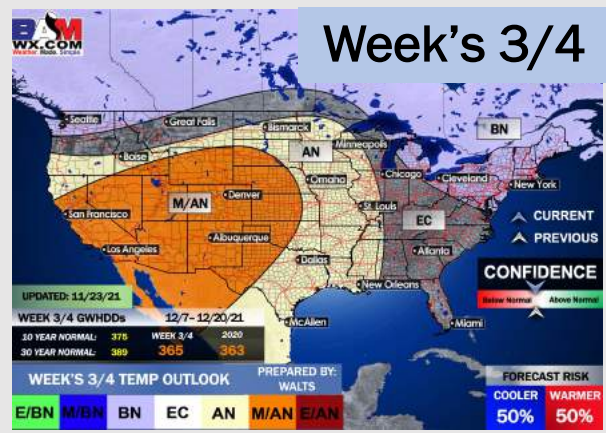
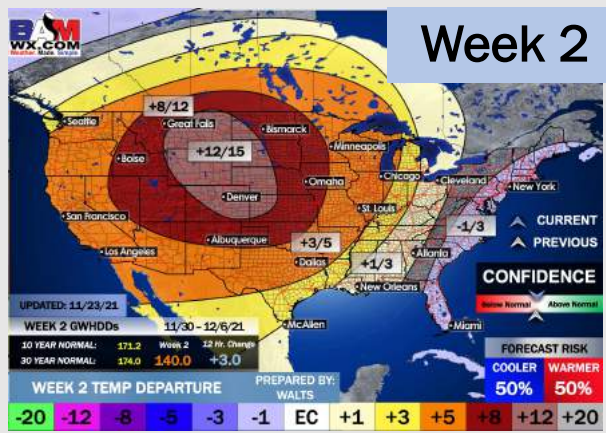
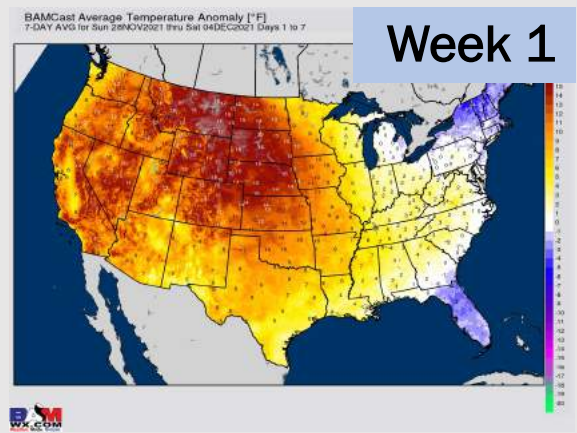


Wind Speed
6 PM CT



High Temps

Houston Pilots: 11/27/21



- After the rain end into tomorrow morning, a rather inactive week ahead. Chances return towards next FRI/ SAT with the next system. Temperatures expected to be above normal this week.
- The week 2 timeframe is expected to have above normal temperatures and slightly above normal risks for precip.
- Right now, we are favoring slightly above normal risks for temperatures and near normal to slightly below normal risks for precip for the first half of December.