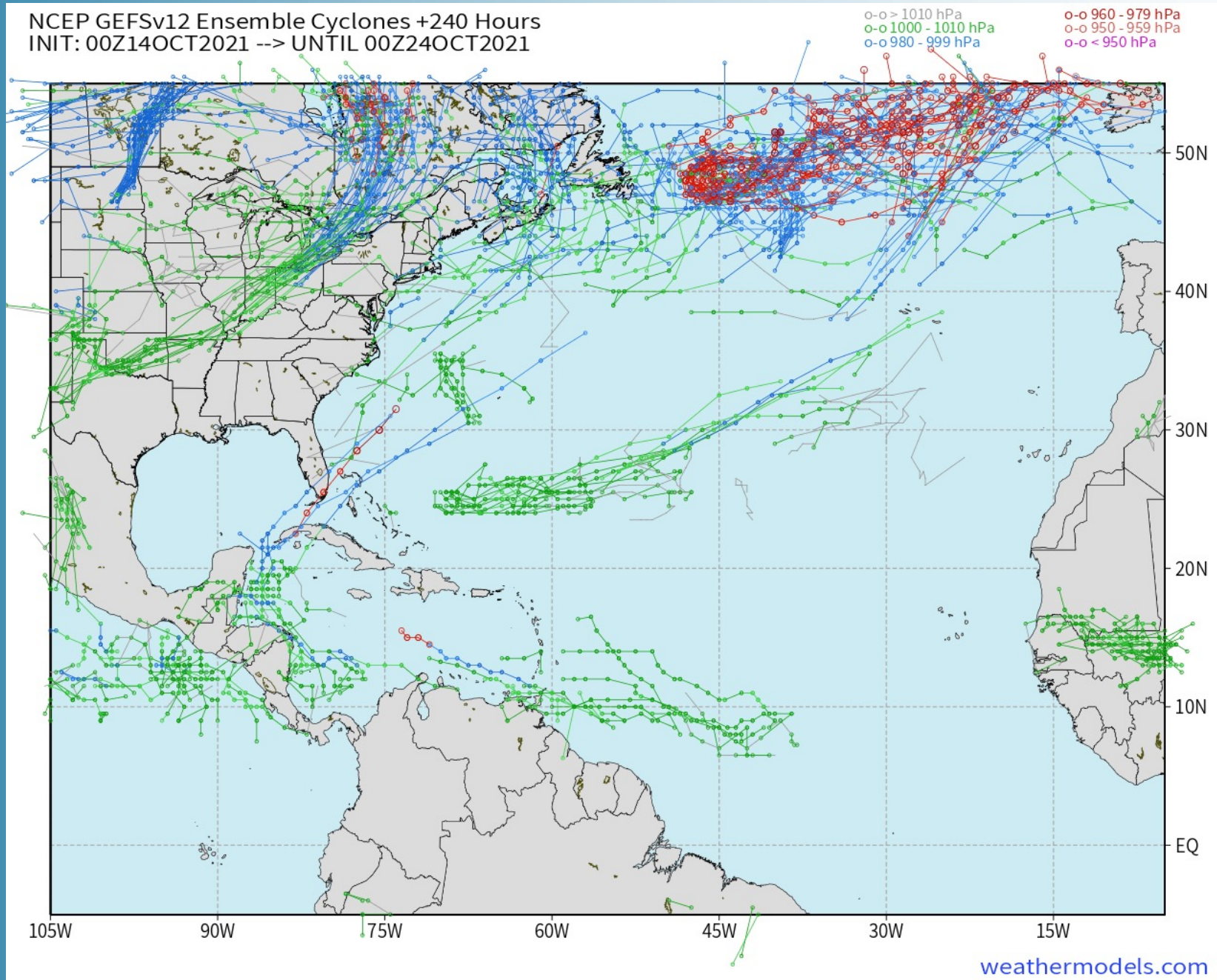


**Updated: 4:40 AM CT, Thursday, October 14, 2021**

- **As always, please do not hesitate to reach out to us with any forecast questions via the chat option on the Weather Porthole or our on-call number, **(317)-560-8122** press 1 for forecast questions.**

# Tropical Update:

## American Ensemble 10-days Tracks



- We continue to favor the Gulf to remain quiet at least for the next 7-10 days.



# Visibility Report

## Thursday, October 14, 2021

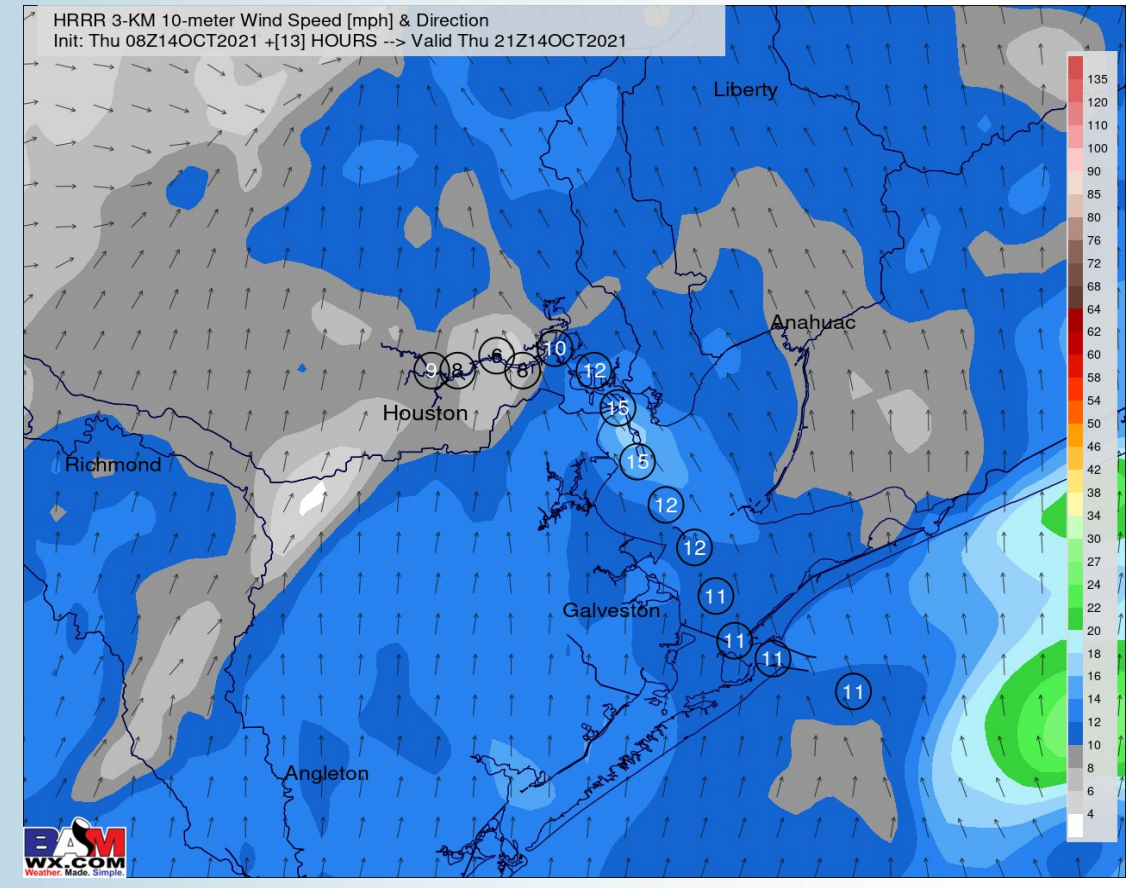
# HOURLY VISIBILITY BREAKDOWN (in miles)

Time	10-14-2021 Thu 3am	10-14-2021 Thu 4am	10-14-2021 Thu 5am	10-14-2021 Thu 6am	10-14-2021 Thu 7am	10-14-2021 Thu 8am	10-14-2021 Thu 9am	10-14-2021 Thu 10am	10-14-2021 Thu 11am	10-14-2021 Thu 12pm	10-14-2021 Thu 1pm	10-14-2021 Thu 2pm	10-14-2021 Thu 3pm	10-14-2021 Thu 4pm	10-14-2021 Thu 5pm	10-14-2021 Thu 6pm	10-14-2021 Thu 7pm	10-14-2021 Thu 8pm	10-14-2021 Thu 9pm	10-14-2021 Thu 10pm	10-14-2021 Thu 11pm	10-15-2021 Fri 12am	10-15-2021 Fri 1am	10-15-2021 Fri 2am	10-15-2021 Fri 3am	10-15-2021 Fri 4am	10-15-2021 Fri 5am	10-15-2021 Fri 6am	10-15-2021 Fri 7am	10-15-2021 Fri 8am	10-15-2021 Fri 9am	10-15-2021 Fri 10am	10-15-2021 Fri 11am	10-15-2021 Fri 12pm	10-15-2021 Fri 1pm	10-15-2021 Fri 2pm		
Houston Pilots N - 610 Bridge	10.000	10.000	10.000	10.000	10.000	10.000	10.000	10.000	10.000	10.000	10.000	10.000	10.000	10.000	10.000	10.000	10.000	10.000	10.000	10.000	10.000	10.000	10.000	7.954	6.964	5.930	4.931	4.931	3.897	3.897	6.380	10.000	10.000	10.000	10.000	10.000		
Houston Pilots M - Kinder 1	10.000	10.000	10.000	10.000	10.000	10.000	10.000	10.000	10.000	10.000	10.000	10.000	10.000	10.000	10.000	10.000	10.000	10.000	10.000	10.000	10.000	10.000	10.000	7.954	7.462	6.700	5.996	5.945	5.233	5.233	6.700	10.000	10.000	10.000	10.000	10.000		
Houston Pilots L - Greens Bayou	10.000	10.000	10.000	10.000	10.000	10.000	10.000	10.000	10.000	10.000	10.000	10.000	10.000	10.000	10.000	10.000	10.000	10.000	10.000	10.000	10.000	10.000	10.000	8.560	8.133	7.706	7.312	7.312	6.885	6.885	7.706	10.000	10.000	10.000	10.000	10.000		
Houston Pilots K - Shell Crude	10.000	10.000	10.000	10.000	10.000	10.000	10.000	10.000	10.000	10.000	10.000	10.000	10.000	10.000	10.000	10.000	10.000	10.000	10.000	10.000	10.000	10.000	10.000	8.988	8.988	8.988	8.988	8.988	8.988	8.988	8.988	8.988	10.000	10.000	10.000	10.000	10.000	
Houston Pilots J - Lynchburg Ferries	10.000	10.000	10.000	10.000	10.000	10.000	10.000	10.000	10.000	10.000	10.000	10.000	10.000	10.000	10.000	10.000	10.000	10.000	10.000	10.000	10.000	10.000	10.000	8.988	8.988	8.988	8.988	8.988	8.988	8.988	8.988	8.988	10.000	10.000	10.000	10.000	10.000	
Houston Pilots I - Exxon 3	10.000	10.000	10.000	10.000	10.000	10.000	10.000	10.000	10.000	10.000	10.000	10.000	10.000	10.000	10.000	10.000	10.000	10.000	10.000	10.000	10.000	10.000	10.000	10.000	10.000	10.000	10.000	10.000	10.000	10.000	10.000	10.000	10.000	10.000	10.000	10.000	10.000	
Houston Pilots H - Morgans Point	10.000	10.000	10.000	10.000	10.000	10.000	10.000	10.000	10.000	10.000	10.000	10.000	10.000	10.000	10.000	10.000	10.000	10.000	10.000	10.000	10.000	10.000	10.000	10.000	10.000	10.000	10.000	10.000	10.000	10.000	10.000	10.000	10.000	10.000	10.000	10.000	10.000	
Houston Pilots G - 75/76	10.000	10.000	10.000	10.000	10.000	10.000	10.000	10.000	10.000	10.000	10.000	10.000	10.000	10.000	10.000	10.000	10.000	10.000	10.000	10.000	10.000	10.000	10.000	10.000	10.000	10.000	10.000	10.000	10.000	10.000	10.000	10.000	10.000	10.000	10.000	10.000	10.000	
Houston Pilots F - 63/64	10.000	10.000	10.000	10.000	10.000	10.000	10.000	10.000	10.000	10.000	10.000	10.000	10.000	10.000	10.000	10.000	10.000	10.000	10.000	10.000	10.000	10.000	10.000	10.000	10.000	10.000	10.000	10.000	10.000	10.000	10.000	10.000	10.000	10.000	10.000	10.000	10.000	
Houston Pilots E - 51/52	10.000	10.000	10.000	10.000	10.000	10.000	10.000	10.000	10.000	10.000	10.000	10.000	10.000	10.000	10.000	10.000	10.000	10.000	10.000	10.000	10.000	10.000	10.000	10.000	10.000	10.000	10.000	10.000	10.000	10.000	10.000	10.000	10.000	10.000	10.000	10.000	10.000	
Houston Pilots D - 37/38	10.000	10.000	10.000	10.000	10.000	10.000	10.000	10.000	10.000	10.000	10.000	10.000	10.000	10.000	10.000	10.000	10.000	10.000	10.000	10.000	10.000	10.000	10.000	10.000	10.000	10.000	10.000	10.000	10.000	10.000	10.000	10.000	10.000	10.000	10.000	10.000	10.000	
Houston Pilots C - 25/26	10.000	10.000	10.000	10.000	10.000	10.000	10.000	10.000	10.000	10.000	10.000	10.000	10.000	10.000	10.000	10.000	10.000	10.000	10.000	10.000	10.000	10.000	10.000	10.000	10.000	10.000	10.000	10.000	10.000	10.000	10.000	10.000	10.000	10.000	10.000	10.000	10.000	
Houston Pilots B - 11/12	10.000	10.000	10.000	10.000	10.000	10.000	10.000	10.000	10.000	10.000	10.000	10.000	10.000	10.000	10.000	10.000	10.000	10.000	10.000	10.000	10.000	10.000	10.000	10.000	10.000	10.000	10.000	10.000	10.000	10.000	10.000	10.000	10.000	10.000	10.000	10.000	10.000	
Houston Pilots A - 1 & 2 Bravo	10.000	10.000	10.000	10.000	10.000	10.000	10.000	10.000	10.000	10.000	10.000	10.000	10.000	10.000	10.000	10.000	10.000	10.000	10.000	10.000	10.000	10.000	10.000	10.000	10.000	10.000	10.000	10.000	10.000	10.000	10.000	10.000	10.000	10.000	10.000	10.000	9.822	9.822

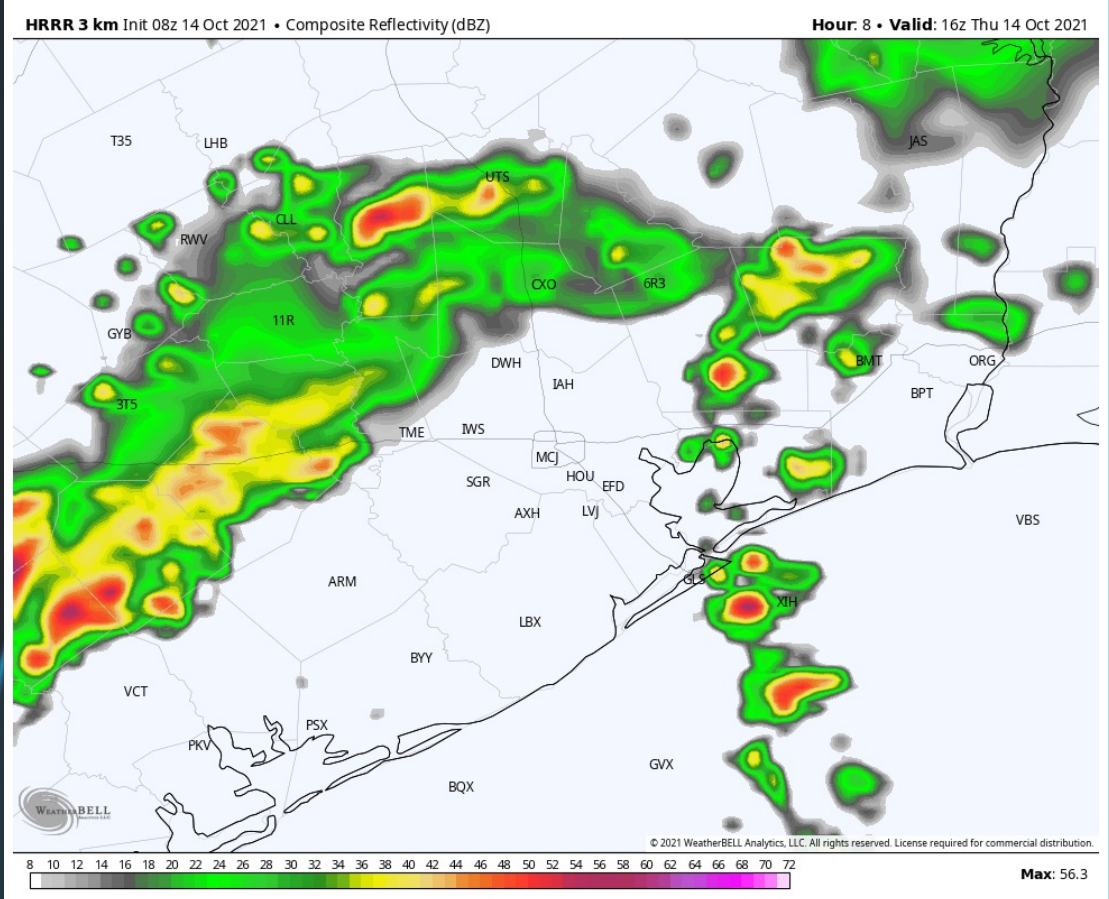
## Short-Term Forecast Discussion

- Isolated showers will be possible through ~8AM, with a more scattered shower potential from 9AM to 12PM near the boarding station. Right now we are thinking there's a decent lull in precipitation into the afternoon to evening hours the rest of the day.
- Winds continue out of the SSE for today, sustained in the 10-15 MPH range, occasionally gusting up to 20-25 MPH across the boarding station.
- Mid 80s are again favored for the day today.
- **Fog is not expected for today to tonight.**

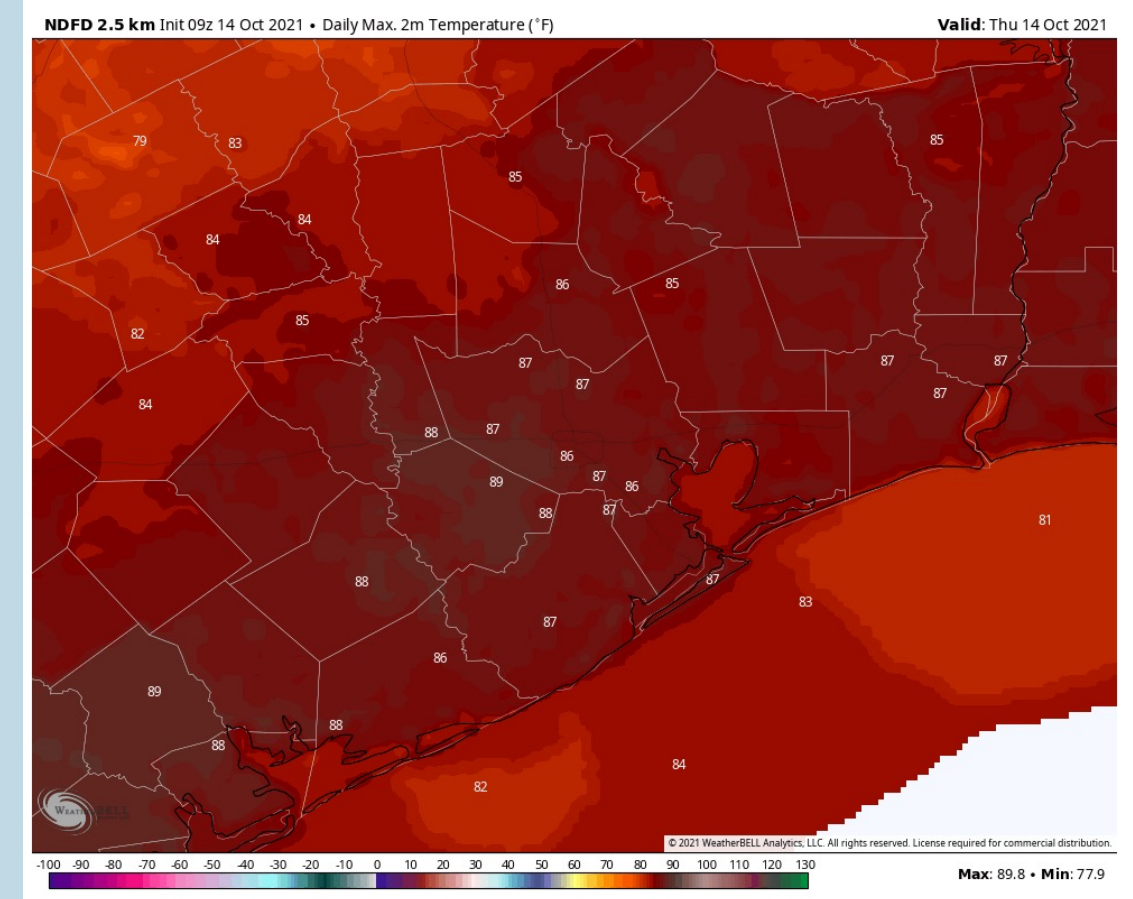
## Sustained Winds (4 PM CT)



## Simulated Radar Snapshot (12 PM CT)



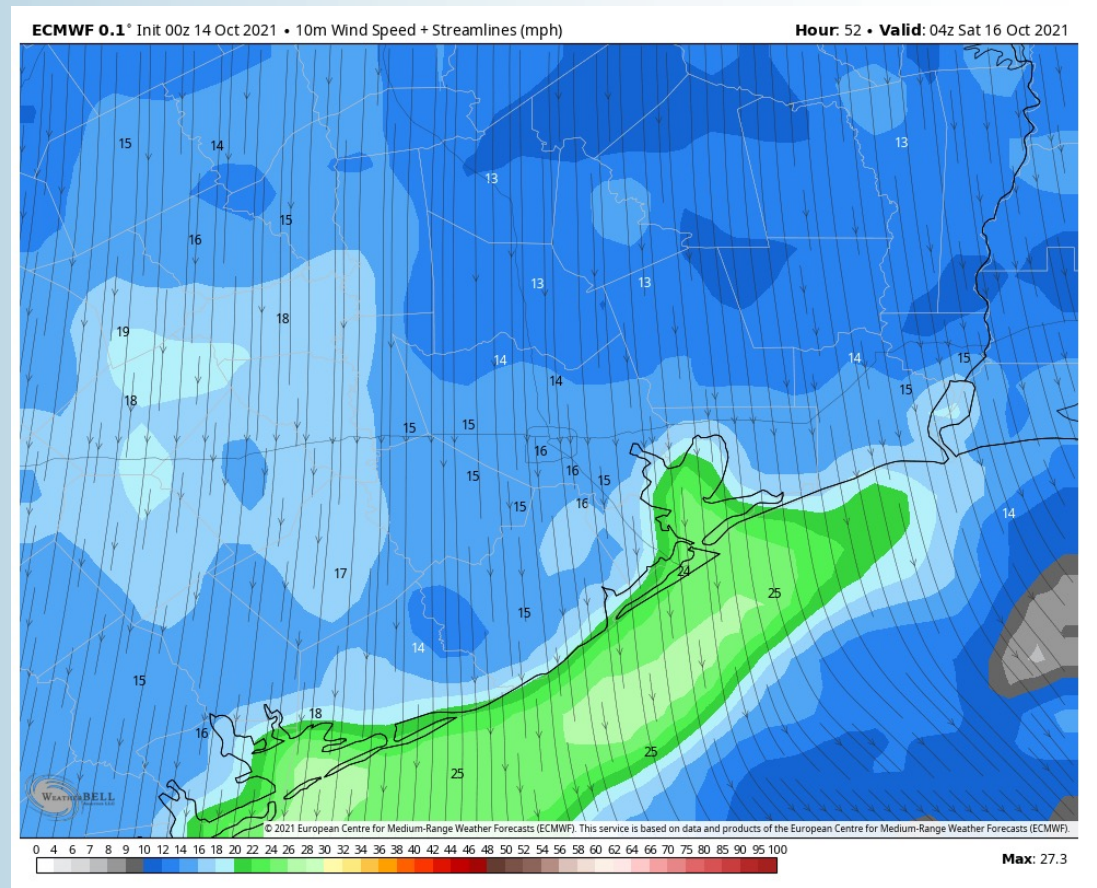
## High Temps Thursday



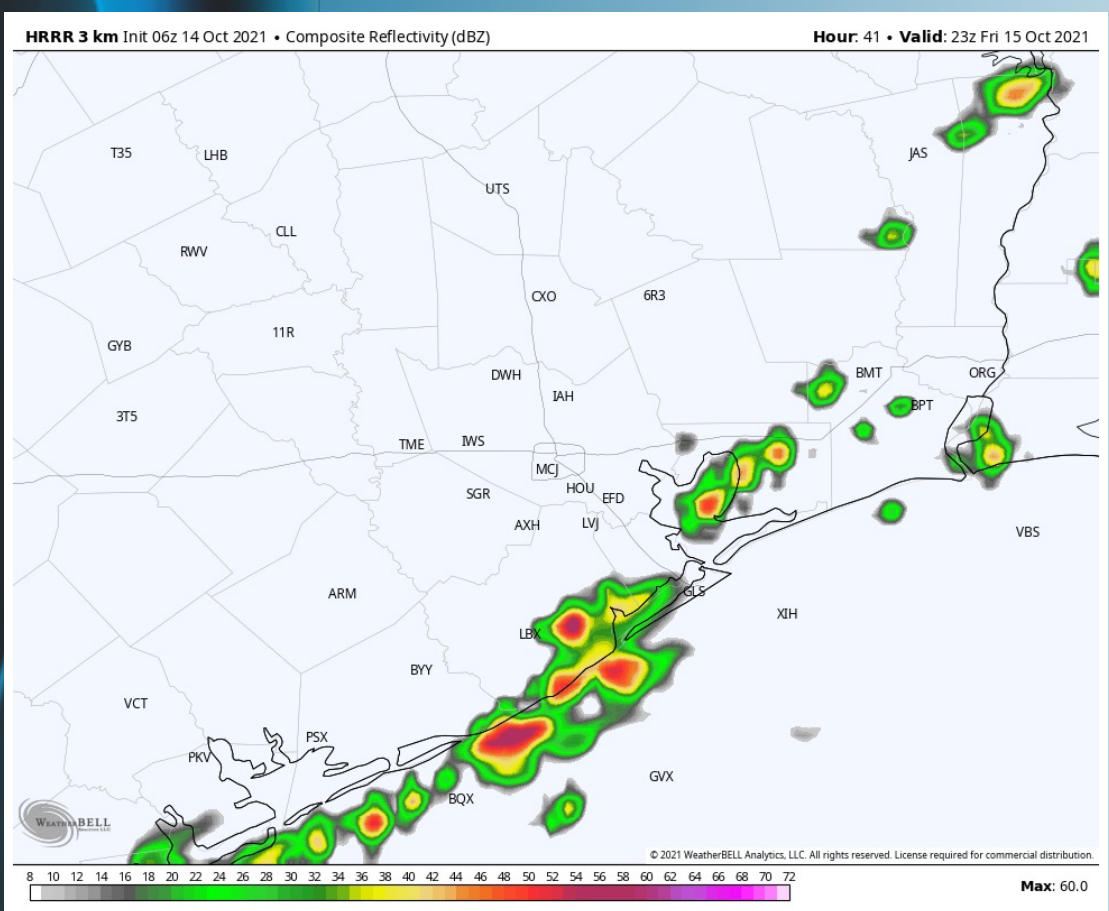
## Short-Term Forecast Discussion

- Most of Friday morning through about noon will see scattered showers across the boarding station. After a brief lull of rainfall into the afternoon, expecting another increase in showers and storms from 3-8PM along and out ahead of the cold front.
- Winds will slowly be calming throughout the morning into the afternoon sustained from the SSW around 8 – 13 MPH. A cold front is anticipated to swing through around 10 PM – midnight. After this front passes winds will pick up sustained closer to 15 – 25 MPH. Gust from 30 – 40 MPH will be possible late Friday into Saturday morning.
- Mid 80s are again favored for the day Friday.
- **Fog is not expected for Friday.**

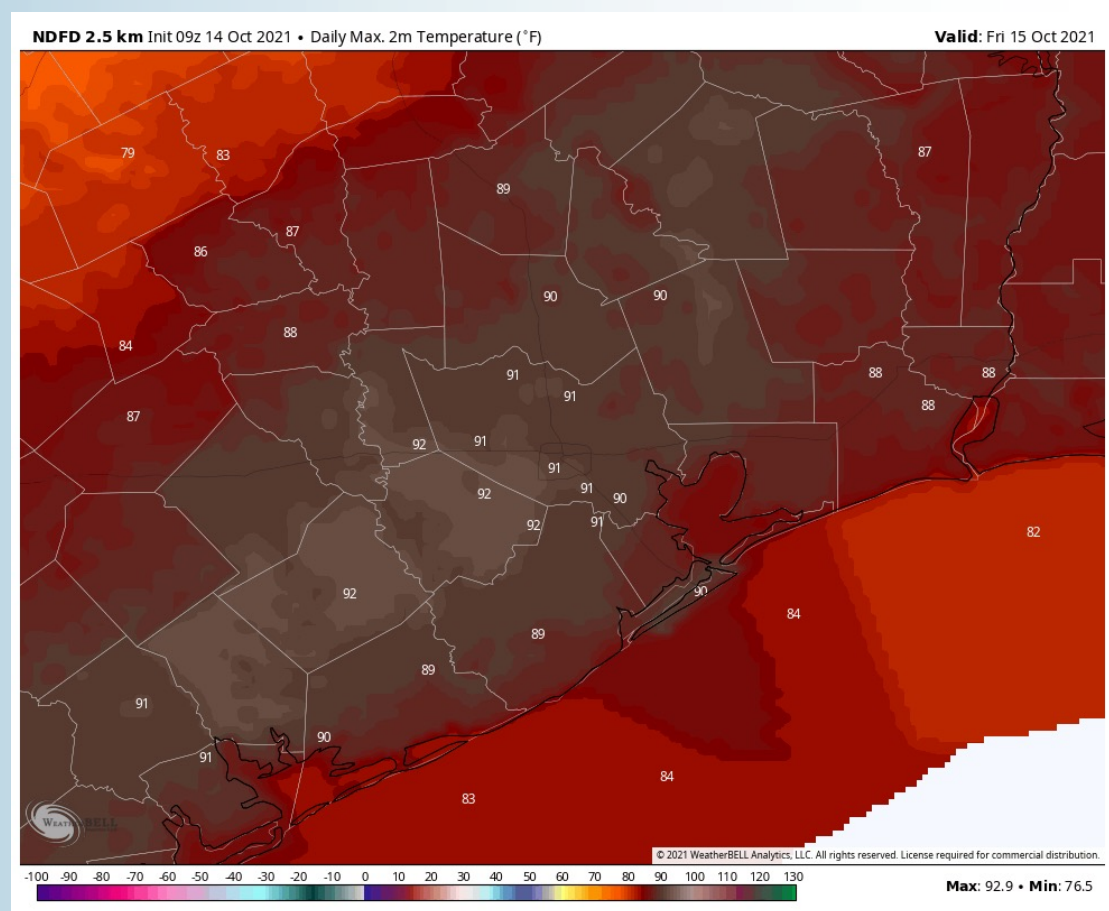
## Sustained Winds (11 PM CT)



## Simulated Radar Snapshot (6 PM CT)



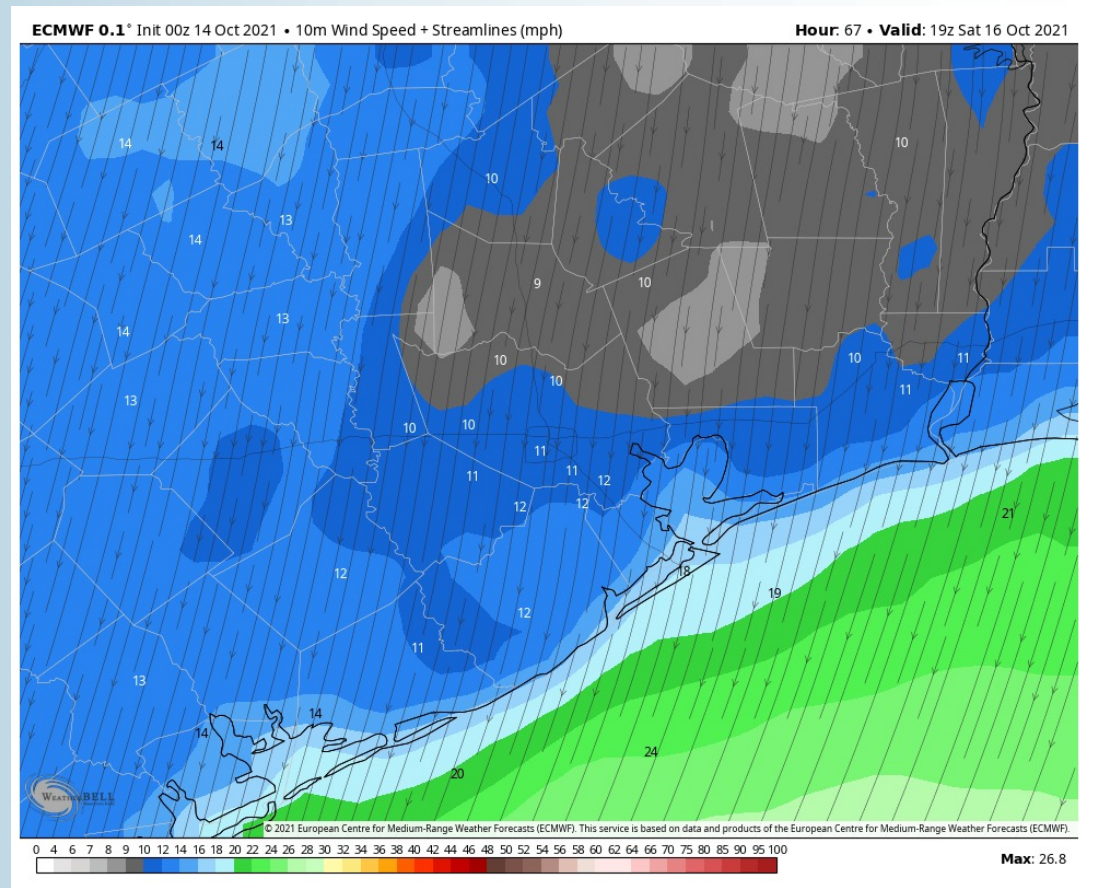
## High Temps Friday



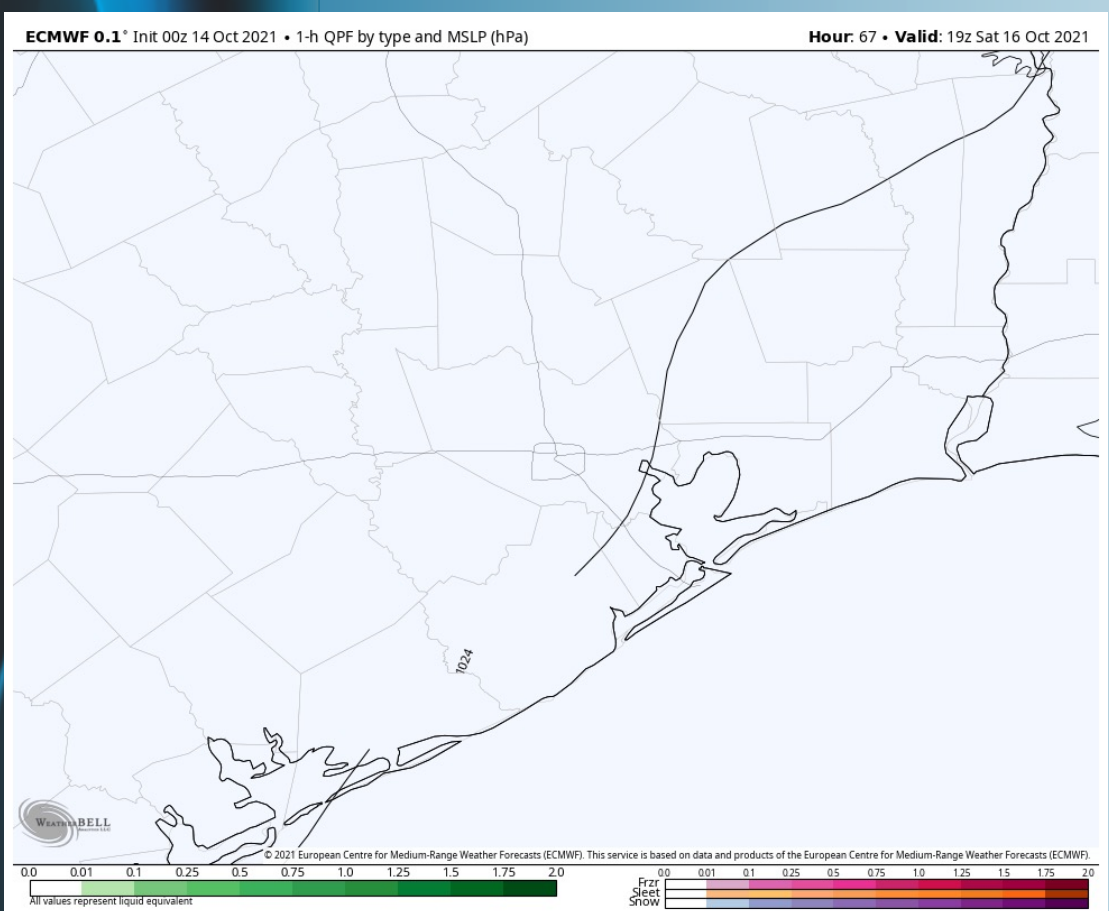
## Short-Term Forecast Discussion

- A much cooler and drier day is expected on Saturday, remaining quite windy as well.
- Winds are still expected to be 15-20 MPH sustained near the boarding station on Saturday, at times still up to 25 MPH sustained out of the NNE. Periods of gusts up to 25-35 MPH will be possible.
- Mid 70s are favored for the day Saturday.
- **Fog is not expected for Saturday.**

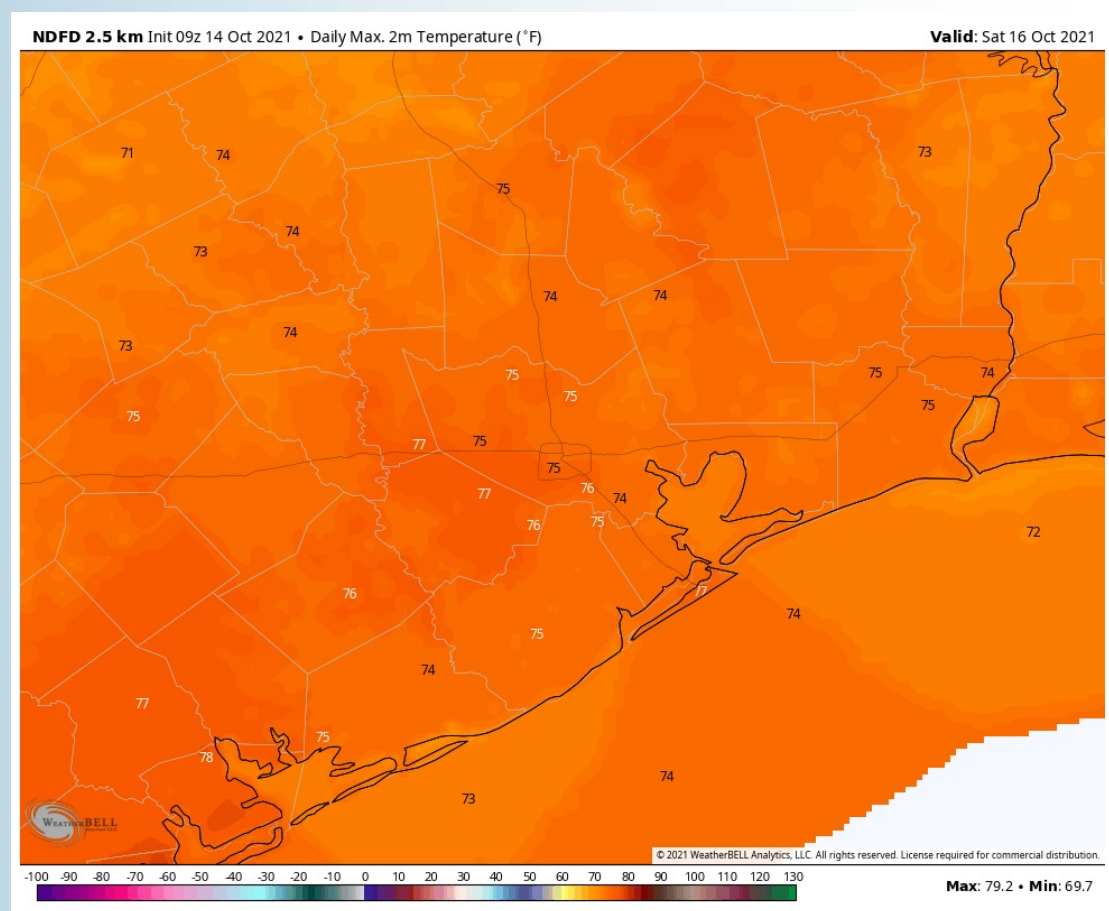
## Sustained Winds (2 PM CT)



## Simulated Radar Snapshot (2 PM CT)



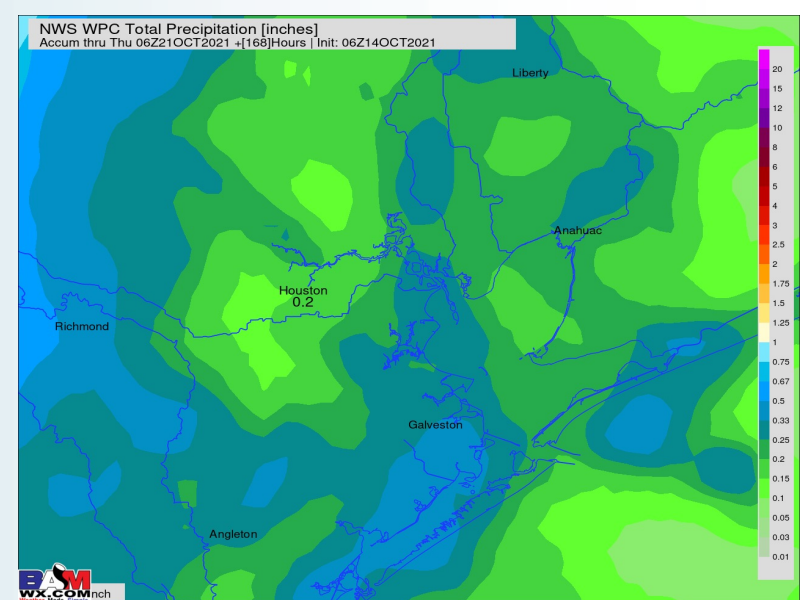
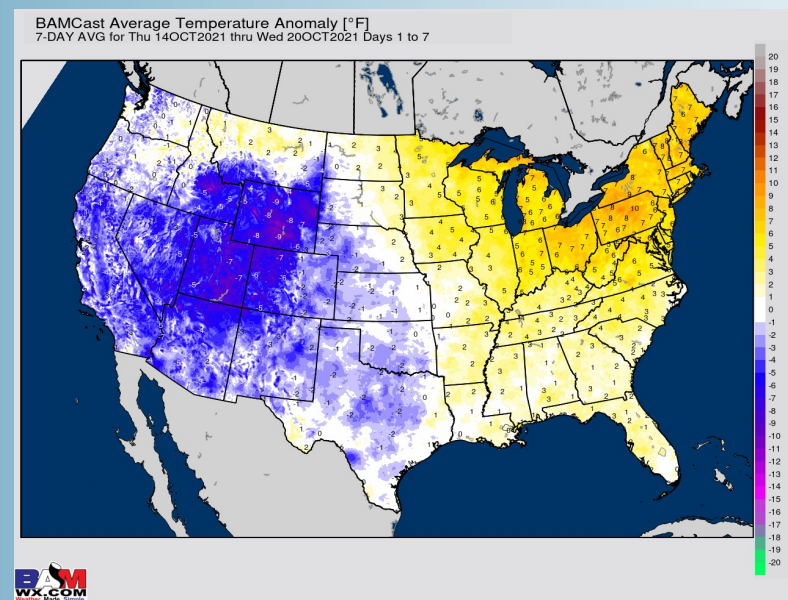
## High Temps Saturday



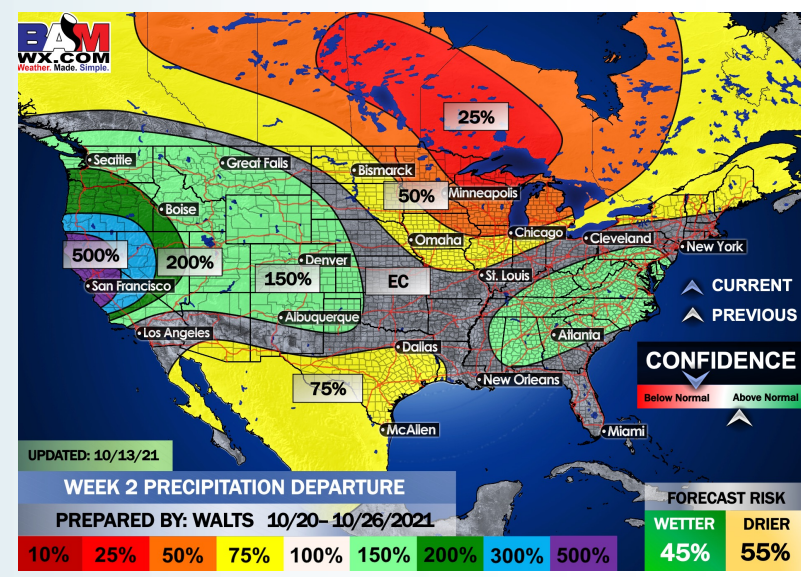
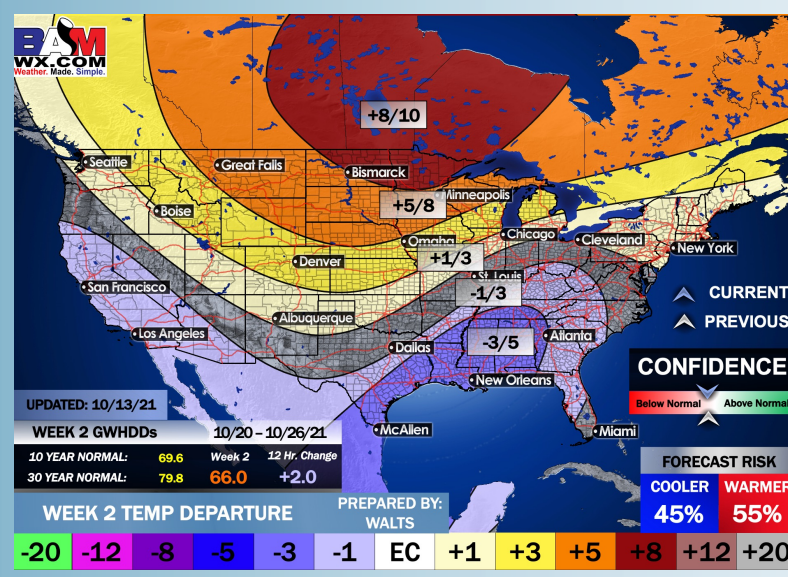
## Long-Range Forecast Discussion

- Temps look to be average out about normal for this time of year with hit and miss rain chances possible today before a cold front works through Friday night. The rest of the weekend is anticipated to be dry, carrying over into early next week.
  
- The week 2 timeframe is expected to have below average temps with slightly below average risks for precip. Not eyeing a specific threat for a tropical storm or hurricane at this distance but will need to continue to monitor for potential development.
  
- Right now, we have risks slightly below normal temps and normal to slightly below normal precip for the weeks 3/4 period. We will continue to monitor for tropical disturbances during this time.

## Week 1 Forecast



## Week 2 Forecast



## Weeks 3/4 Forecast

