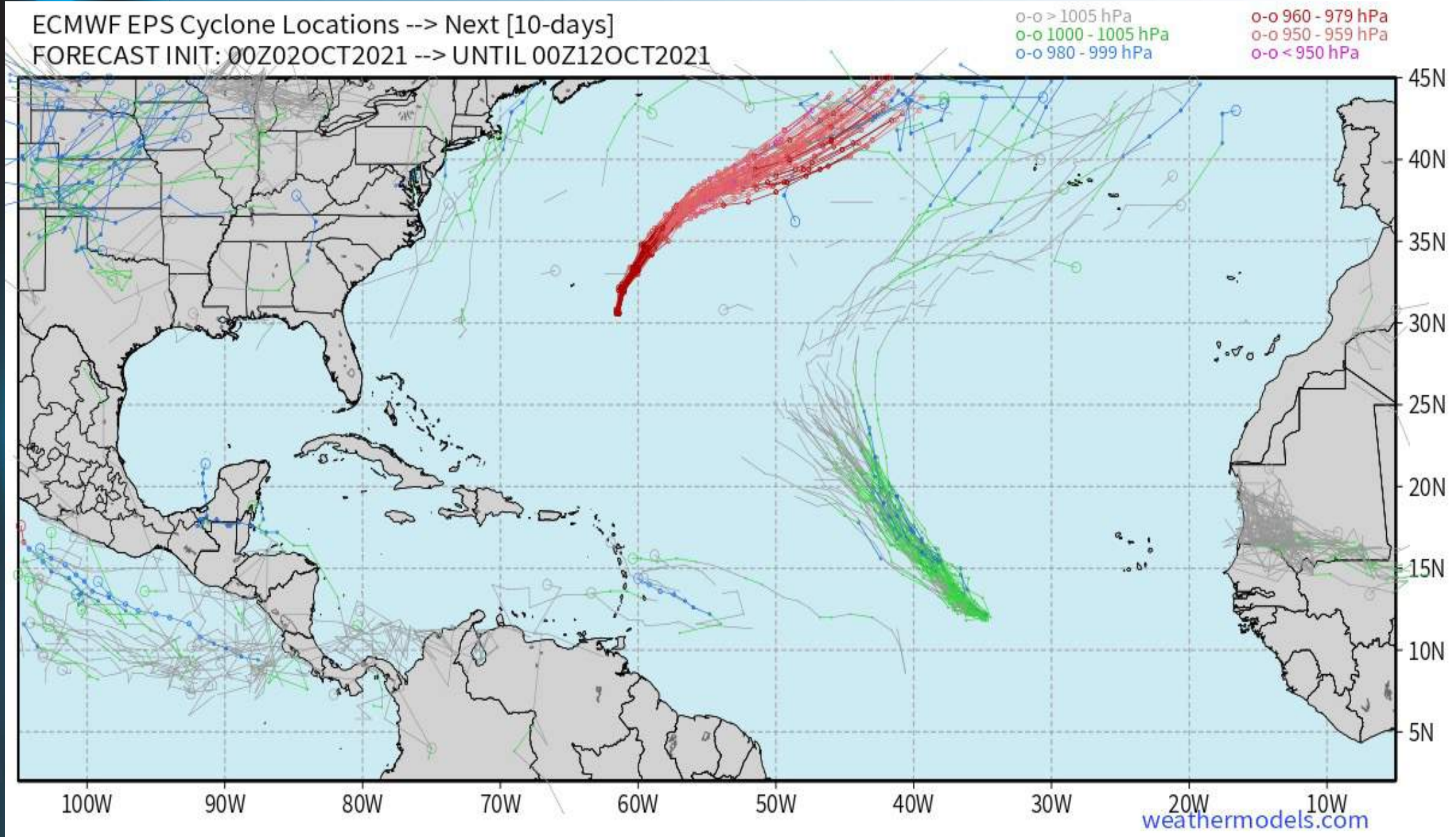


**Updated: 4:15 AM CT, Saturday, October 2, 2021**

- **As always, please do not hesitate to reach out to us with any forecast questions via the chat option on the Weather Porthole or our on-call number, (317)-560-8122 press 1 for forecast questions.**

## Tropical Update:

## ECMWF EPS 10-days Tracks



- We continue to favor the Gulf to remain quiet at least for the next 7-10 days. Current tropical activity is expected to stay confined to the Atlantic.
- One area to watch for **\*\*potential\*\*** development would be the Caribbean around the ~October 8-11 window. Models are hinting of possible weak formation in this period. Too early for any sort of specifics, but something to keep an eye on.



# Visibility Report

## Saturday, October 2, 2021

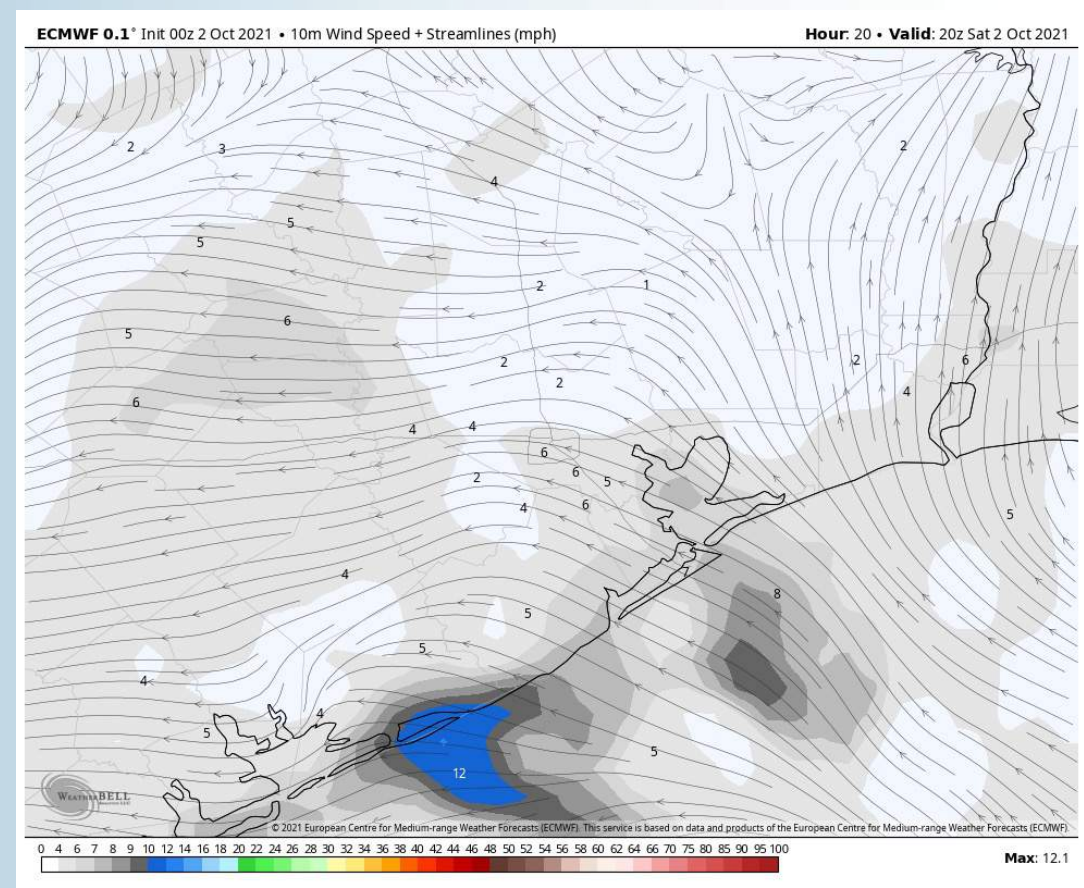
# HOURLY VISIBILITY BREAKDOWN (in miles)

Time	10-02-2021 Sat 3am	10-02-2021 Sat 4am	10-02-2021 Sat 5am	10-02-2021 Sat 6am	10-02-2021 Sat 7am	10-02-2021 Sat 8am	10-02-2021 Sat 9am	10-02-2021 Sat 10am	10-02-2021 Sat 11am	10-02-2021 Sat 12pm	10-02-2021 Sat 1pm	10-02-2021 Sat 2pm	10-02-2021 Sat 3pm	10-02-2021 Sat 4pm	10-02-2021 Sat 5pm	10-02-2021 Sat 6pm	10-02-2021 Sat 7pm	10-02-2021 Sat 8pm	10-02-2021 Sat 9pm	10-02-2021 Sat 10pm	10-02-2021 Sat 11pm	10-03-2021 Sun 12am	10-03-2021 Sun 1am	10-03-2021 Sun 2am	10-03-2021 Sun 3am	10-03-2021 Sun 4am	10-03-2021 Sun 5am	10-03-2021 Sun 6am	10-03-2021 Sun 7am	10-03-2021 Sun 8am	10-03-2021 Sun 9am	10-03-2021 Sun 10am	10-03-2021 Sun 11am	10-03-2021 Sun 12pm	10-03-2021 Sun 1pm	10-03-2021 Sun 2pm
Houston Pilots N - 610 Bridge	7.927	7.480	6.341	6.226	6.444	6.481	5.920	6.694	7.818	7.568	6.752	8.202	8.650	9.511	9.952	9.142	9.168	8.516	8.505	7.919	7.945	8.156	7.965	8.095	7.798	7.099	5.786	4.709	3.731	4.535	4.385	8.276	9.968	10.000	10.000	10.000
Houston Pilots M - Kinder 1	8.246	7.495	6.367	6.241	6.465	6.622	5.580	6.613	8.080	7.473	7.246	8.707	8.760	9.320	9.778	9.164	9.392	8.577	8.422	8.023	7.989	8.059	8.005	8.115	8.035	7.205	5.878	4.969	3.960	4.497	4.738	8.257	10.000	10.000	10.000	10.000
Houston Pilots L - Greens Bayou	8.195	7.448	6.479	6.158	6.496	6.430	5.112	6.649	8.405	7.839	7.809	9.279	9.291	9.013	9.971	9.390	9.598	8.574	8.256	8.091	8.081	7.946	7.913	7.912	8.077	7.150	6.356	5.109	4.434	4.831	4.988	8.308	9.983	10.000	10.000	10.000
Houston Pilots K - Shell Crude	8.168	7.554	6.681	6.377	6.891	6.626	5.595	6.885	8.276	7.681	8.211	9.615	9.252	9.176	9.991	9.631	9.630	8.505	8.294	8.084	8.040	7.845	7.806	7.766	8.195	7.485	6.936	5.545	4.612	4.786	5.336	8.088	10.000	10.000	10.000	10.000
Houston Pilots J - Lynchburg Ferries	8.107	7.308	6.903	6.545	6.939	6.180	5.785	7.075	8.262	7.802	8.484	9.734	9.654	8.906	9.846	9.661	9.624	8.359	8.294	8.181	8.052	7.759	7.829	7.693	8.010	7.536	6.752	5.568	4.651	4.821	5.298	8.158	10.000	10.000	10.000	10.000
Houston Pilots I - Exxon 3	8.368	7.346	7.749	7.518	7.155	6.417	6.781	7.393	7.742	7.597	8.763	9.533	9.389	9.054	9.754	9.618	9.256	8.381	8.232	8.113	7.966	7.789	7.799	7.908	8.070	8.173	7.124	6.130	4.797	4.696	5.253	7.966	10.000	10.000	10.000	10.000
Houston Pilots H - Morgans Point	8.788	7.979	8.144	7.971	7.531	7.115	7.521	7.649	7.596	8.124	8.732	9.309	9.153	9.220	9.678	9.428	8.766	8.535	8.282	8.086	8.063	7.922	7.906	8.056	8.102	8.237	7.573	6.891	5.312	4.574	5.102	7.606	10.000	10.000	10.000	10.000
Houston Pilots G - 75/76	9.168	8.672	8.800	8.389	7.966	7.751	8.160	8.079	7.802	8.614	8.106	8.877	8.969	9.106	9.696	9.063	8.777	8.620	8.388	8.266	8.369	7.999	8.055	8.245	8.234	8.765	8.176	7.588	6.262	4.658	4.943	6.863	10.000	10.000	10.000	10.000
Houston Pilots F - 63/64	9.700	9.401	9.201	8.347	8.172	8.346	7.937	8.364	8.430	8.907	7.704	8.753	9.101	9.549	9.737	8.893	8.866	8.709	8.583	8.392	8.344	8.151	8.284	8.500	8.495	8.892	8.804	8.071	6.983	5.448	5.591	6.895	9.765	10.000	10.000	10.000
Houston Pilots E - 51/52	9.877	9.429	9.132	8.292	7.943	8.577	7.846	8.859	8.620	8.739	7.094	8.542	9.434	9.543	9.652	8.758	8.899	8.684	8.649	8.408	8.081	8.095	8.381	8.479	8.719	8.856	8.956	8.514	7.412	6.588	6.577	7.232	9.567	10.000	10.000	10.000
Houston Pilots D - 37/38	9.699	9.311	9.254	8.051	7.863	8.505	7.465	8.996	8.019	7.989	6.790	8.433	9.596	9.664	9.653	8.983	8.972	8.575	8.642	8.651	8.271	8.350	8.620	8.695	8.768	8.918	8.976	8.681	7.782	7.671	7.533	8.115	9.702	10.000	10.000	10.000
Houston Pilots C - 25/26	10.000	9.479	9.479	7.845	7.610	8.047	7.184	9.318	7.995	7.537	6.699	8.096	9.328	9.482	9.465	9.337	9.050	8.726	8.720	8.879	8.672	8.749	8.953	9.097	8.937	9.005	9.072	9.035	7.912	8.127	8.741	8.817	9.613	10.000	10.000	10.000
Houston Pilots B - 11/12	10.000	9.575	9.799	8.022	7.303	7.532	7.147	9.379	8.133	7.477	6.424	7.547	8.974	9.185	9.302	9.332	9.151	8.906	8.787	8.941	8.846	8.845	9.076	9.194	9.098	9.400	9.353	9.187	8.069	8.040	8.911	8.762	9.570	10.000	10.000	10.000
Houston Pilots A - 1 & 2 Bravo	10.000	10.000	10.000	8.454	7.134	6.865	6.672	8.726	8.451	7.610	7.157	6.612	8.136	8.482	9.005	9.156	9.345	9.455	9.227	9.505	9.590	9.158	9.556	9.536	9.341	10.000	9.719	9.359	8.290	7.497	8.793	8.755	9.674	10.000	10.000	10.000

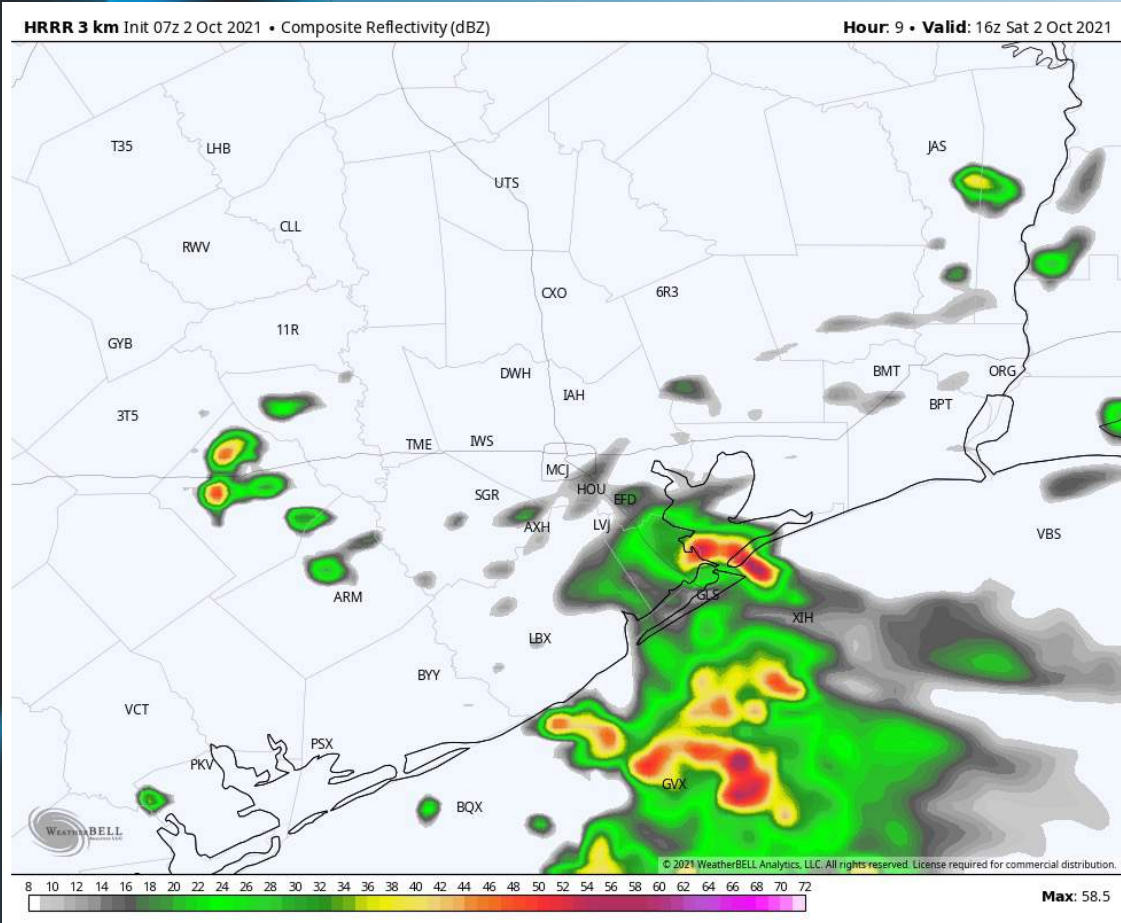
## Short-Term Forecast Discussion

- Scattered showers/ storms will be possible out through the morning today with increasing chances for the HOU area late into the morning into the early afternoon (~30 - 40%). Chances drop a bit after 2 – 3 PM as coverage becomes less, but still a few showers/ storms will be possible through the daylight hours. Any storm/ shower today will be capable of heavy downpours which could reduce visibility. .
- Winds are generally anticipated to be out of the SE today, although outflow from storms could allow for some shifts at times. Winds are anticipated to gradually calm down throughout the morning into the afternoon today, with sustained winds in the 5 – 10 MPH range for most of the day (after 8 AM). Outside of storms winds, winds are anticipated to be overly gusty, although gust around 20 – 30 MPH possible under storms.
- Highs for Saturday top out in the lower 80s.
- *Not expecting fog Saturday.*

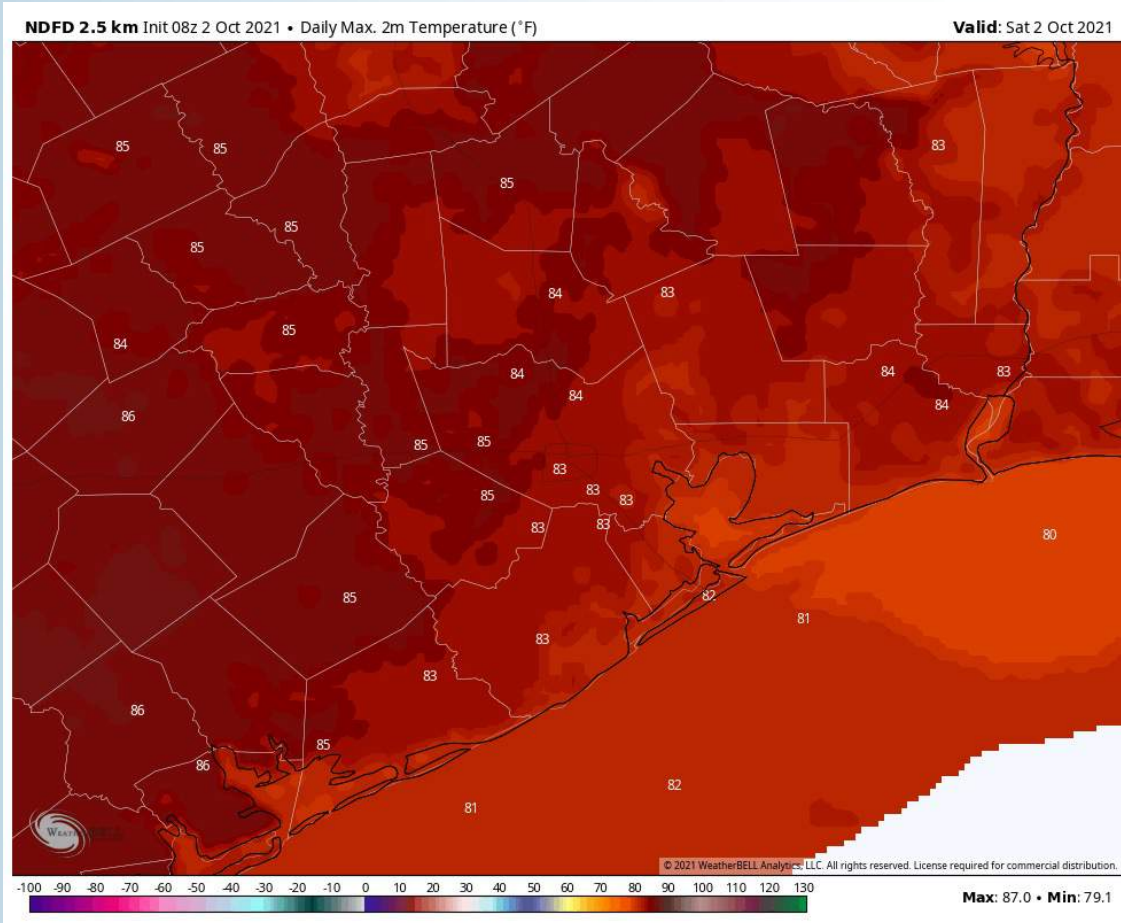
## Sustained Winds (11 AM CT)



## Simulated Radar Snapshot (2 PM CT)



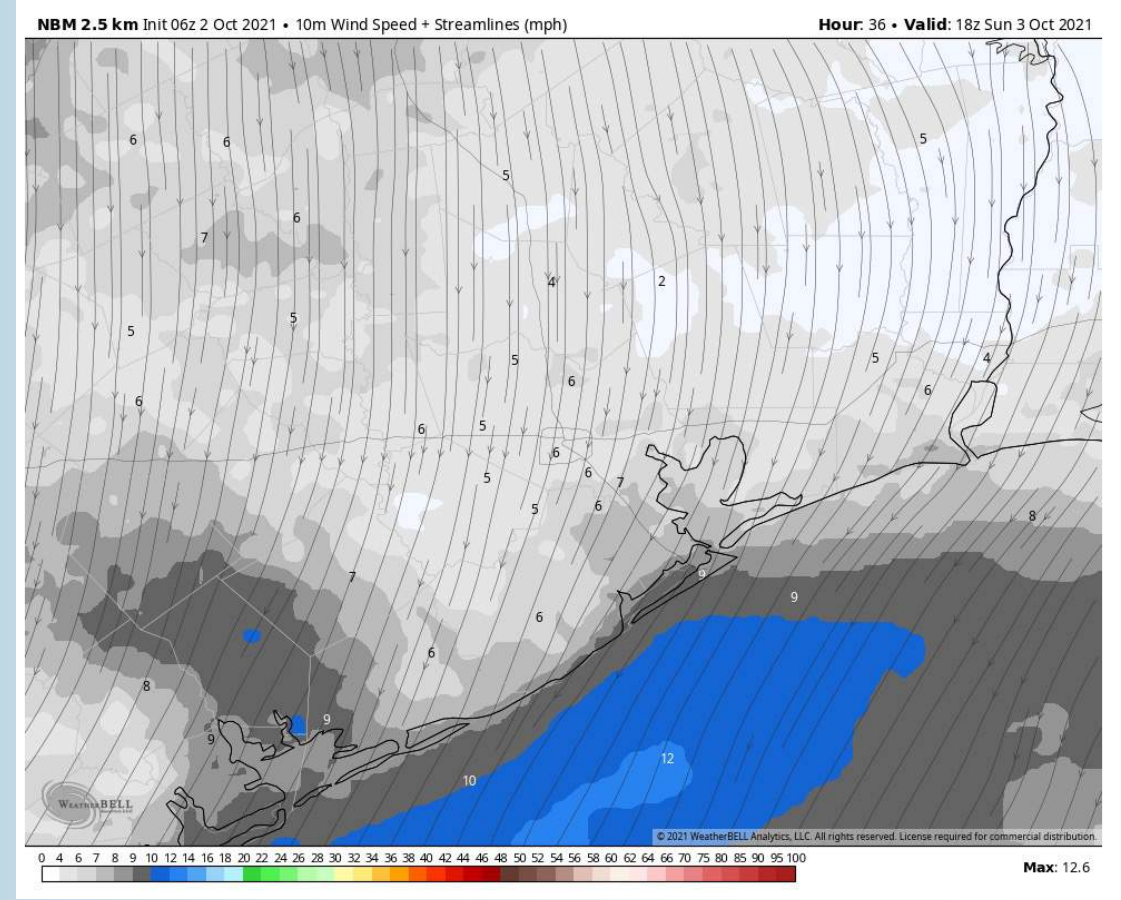
## High Temps Saturday



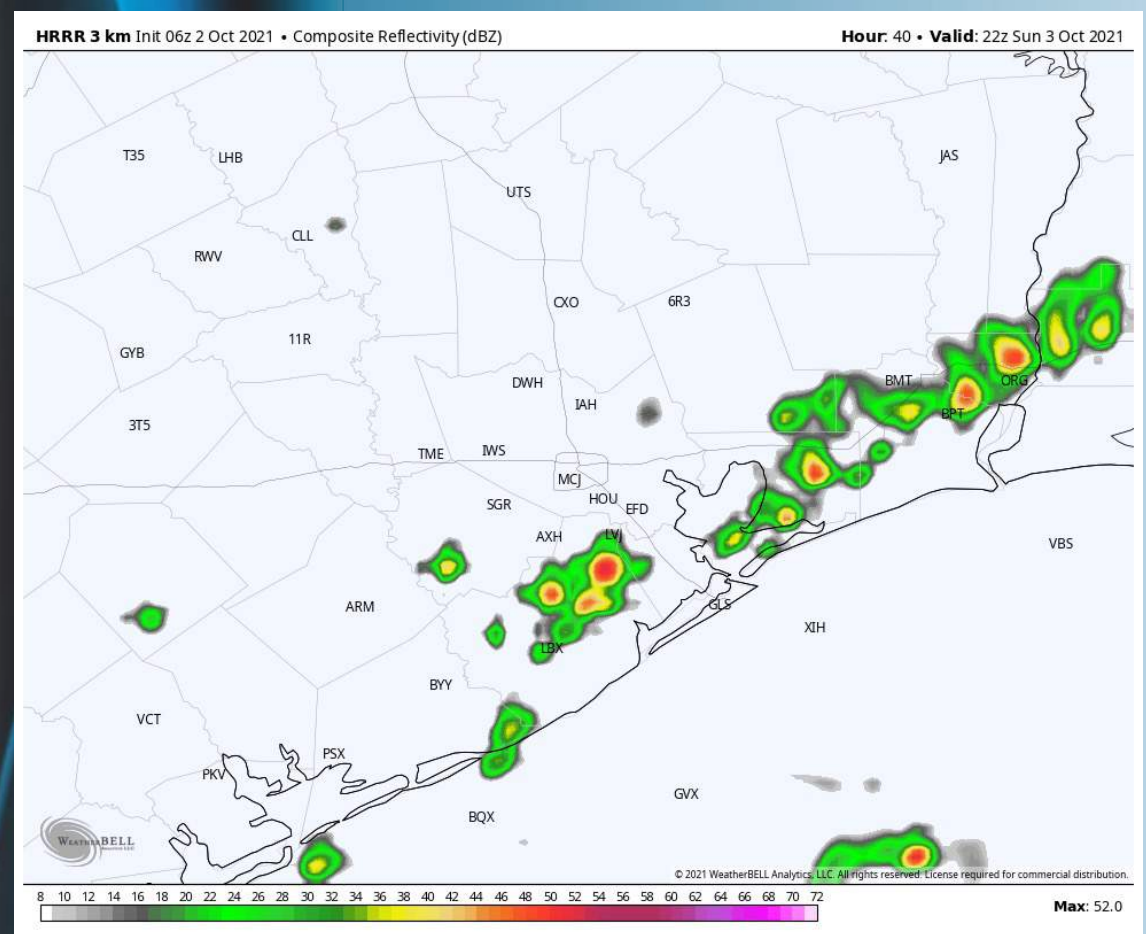
## Short-Term Forecast Discussion

- **An isolated shower will be possible in the early AM hours of Sunday around 5 AM – 10 AM. Scattered showers/ storms will be possible from the 3 PM – 8 PM timeframe (30%).**
- **Winds from 2 AM 5 AM look to shift from SE to out of the north and are anticipated to generally stay that way for most of the day (may have more of an easterly component right out ahead of storms in the afternoon). Winds are generally anticipated to be around 5 – 10 MPH sustained. Gust around 20 MPH possible, mainly under any passing storms in the afternoon.**
- **Highs for Sunday top out in the low to mid 80s.**
  - ***Not expecting fog for Sunday at this time.***

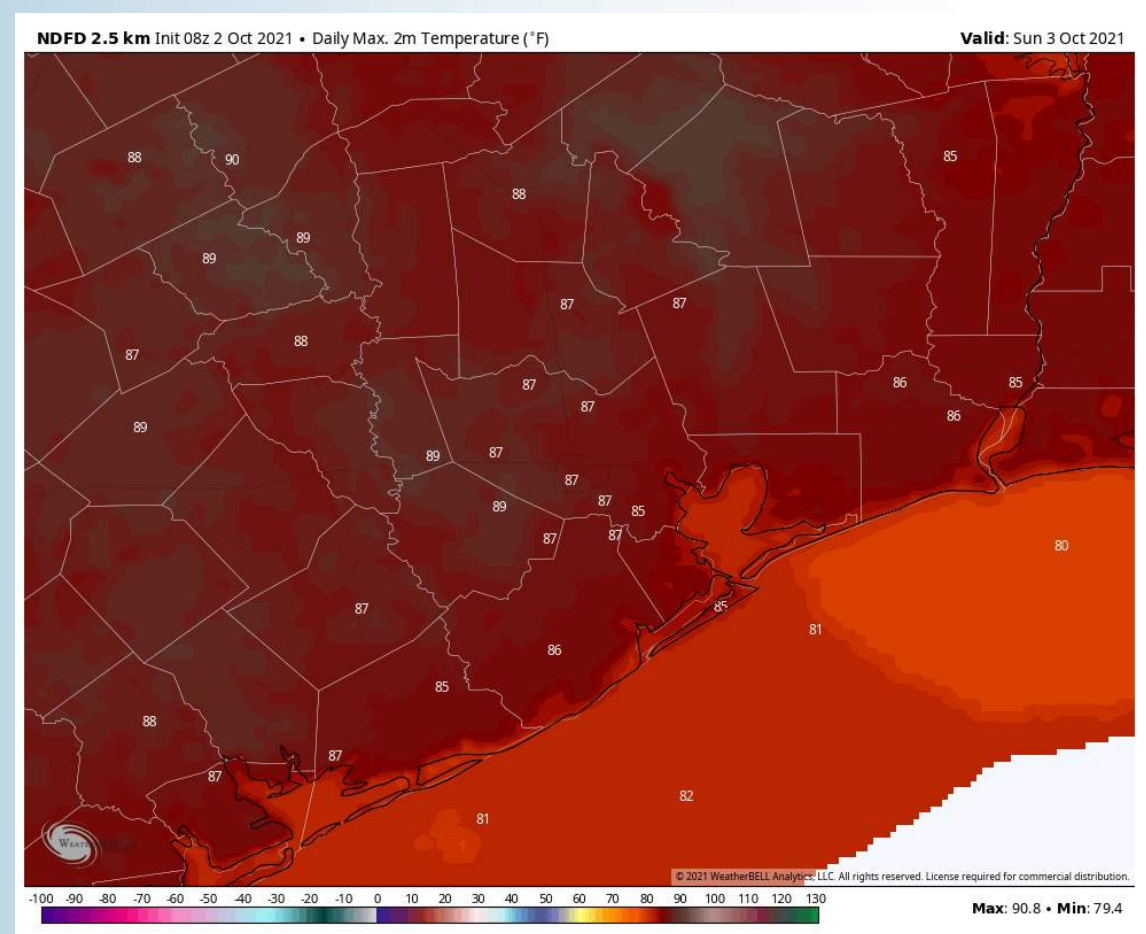
## Sustained Winds (1 PM CT)



## Simulated Radar Snapshot (5 PM CT)



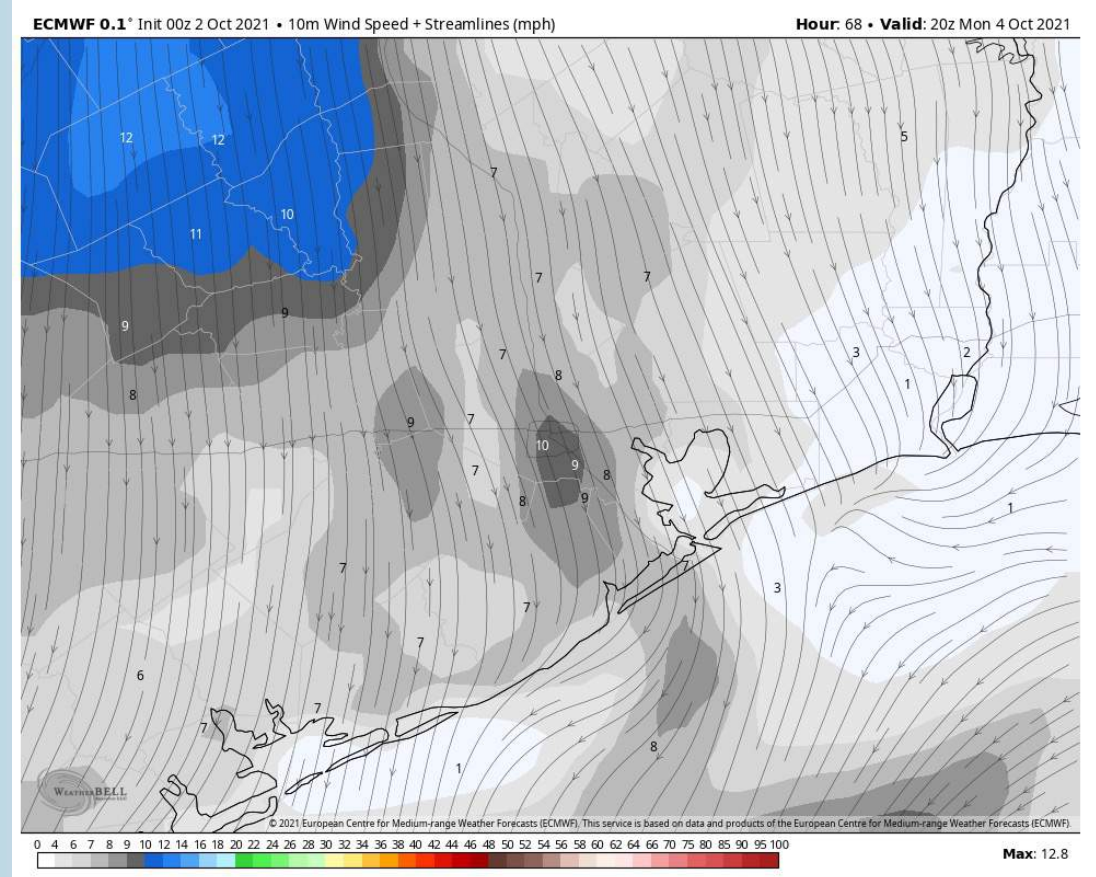
## High Temps Sunday



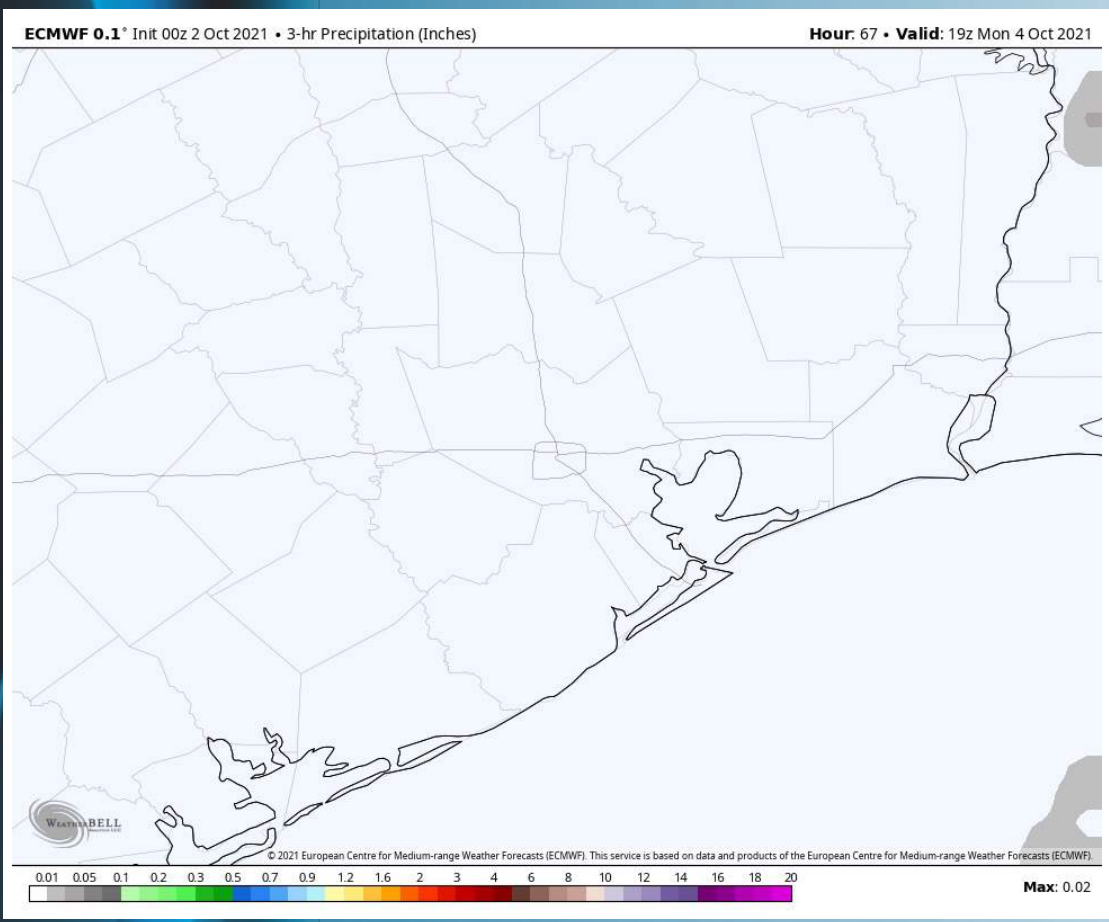
## Short-Term Forecast Discussion

- No precipitation is anticipated Monday as dry air filters in.
- Winds look to continue to be out of the north throughout the day. Winds should be strongest in the AM, sustained around 8 – 13 MPH at the boarding station before calming down later into the morning/ afternoon to around 5 – 10 MPH. Gust around 15 MPH possible.
- High temperatures look to get into the mid 80's F.
- *No fog is favored for Monday morning at this distance.*

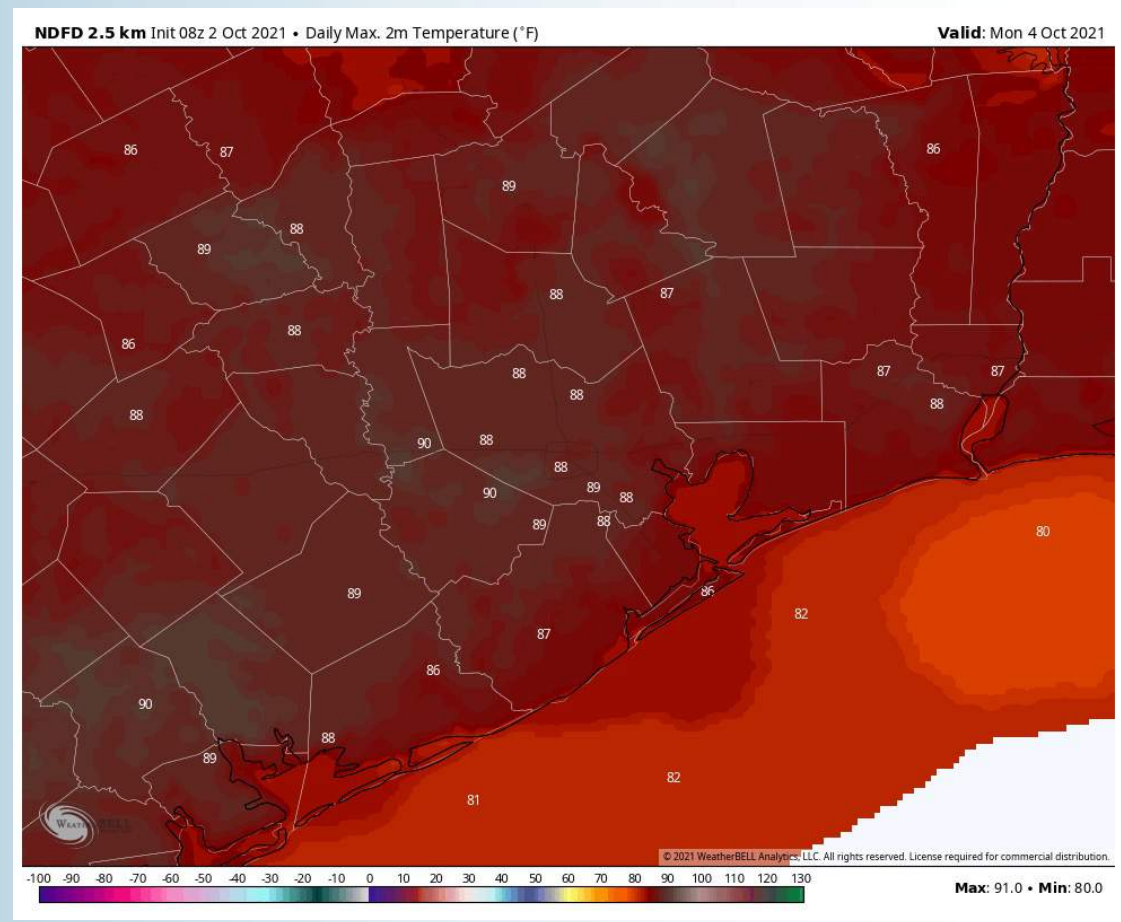
## Sustained Winds (3 PM CT)



## Simulated Radar Snapshot (2 PM CT)



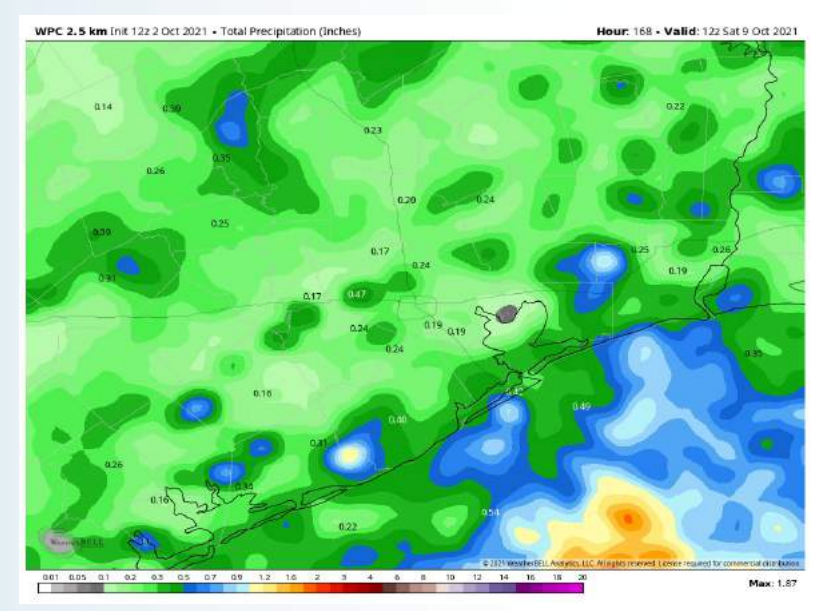
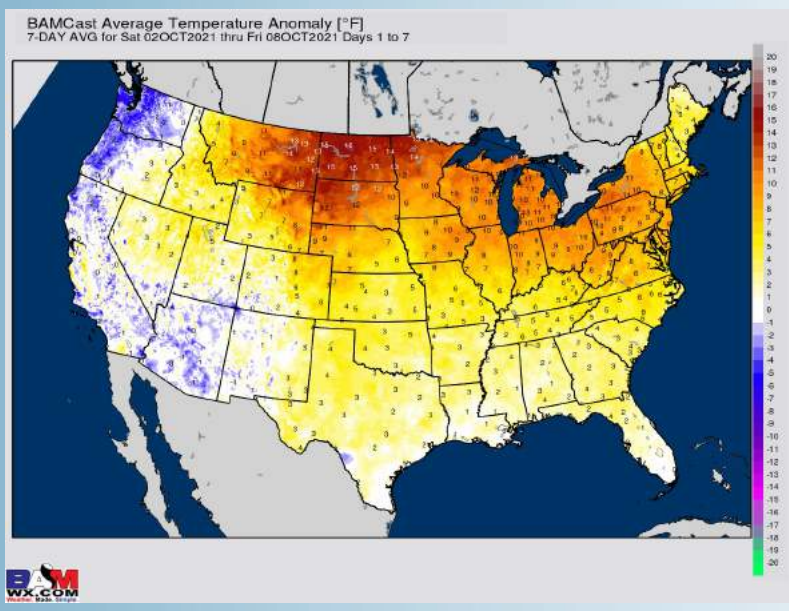
## High Temperatures MON



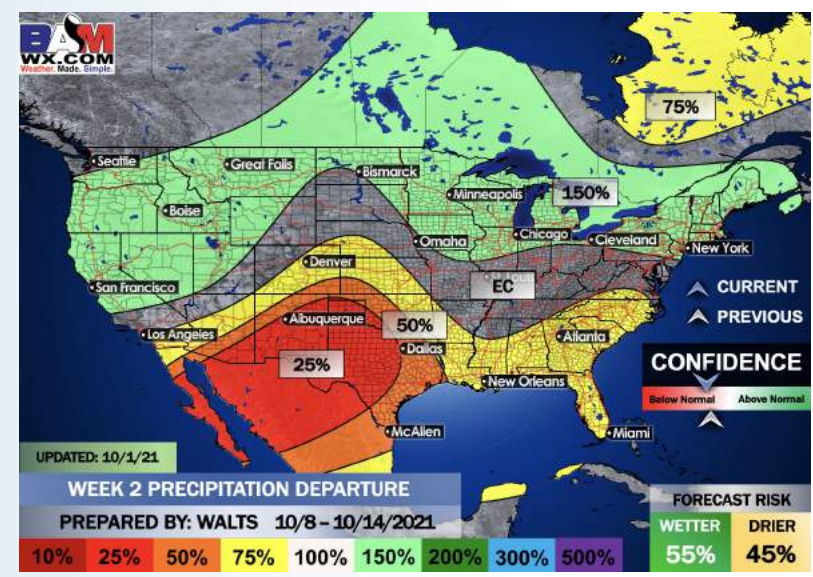
## Long-Range Forecast Discussion

- After Sunday, rain chances begin to quiet down with a rather inactive week. Temperatures look to generally be above normal for the week ahead.
- The week 2 timeframe is expected to have average to slightly below average temps with below normal precip risks. Not eyeing a specific threat for a tropical storm or hurricane at this distance but will need to continue to monitor for potential development.
- Right now, we have risks for slightly below normal temps and slightly below normal precip for the weeks 3/4 period. We will continue to monitor for tropical disturbances during this time. All it takes is for one system to produce above normal rainfall. The forecast may ultimately be “boom or bust” regarding precipitation potential.

## Week 1 Forecast



## Week 2 Forecast



## Weeks 3/4 Forecast

