

Updated: 4:45 AM CT, Tuesday, September 14, 2021

- **As always, please do not hesitate to reach out to us with any forecast questions via the chat option on the Weather Porthole or our on-call number, **(317)-560-8122** press 1 for forecast questions.**

Trigger Thresholds for Houston Pilots Boarding Station:

Trigger met at:	Sustained winds 39+ MPH	Consistent Waves of 6 Feet+	Expected time when trigger will end + hours remaining
Victor	N/A	N/A	N/A
Whiskey	N/A	N/A	N/A
X-Ray	N/A	N/A	N/A
Yankee	N/A	N/A	N/A
Zulu	N/A	IN EFFECT	TUE 9/14/21 @ 8 PM CT

Port Condition	Definition Of Triggers	Trigger Reached
Victor	Hurricane entering or developing in the Gulf of Mexico	NO
Whiskey	72 hrs. prior to predicted sustained winds 39+ MPH	NO
X-Ray	48 hrs. prior to predicted sustained winds of 39+ MPH OR 6' wave height	YES
Yankee	24 hrs. prior to predicted sustained winds of 39+ MPH OR 6' wave height	YES
Zulu	12 hrs. prior to predicted sustained winds of 39+ MPH OR 6' wave height	YES

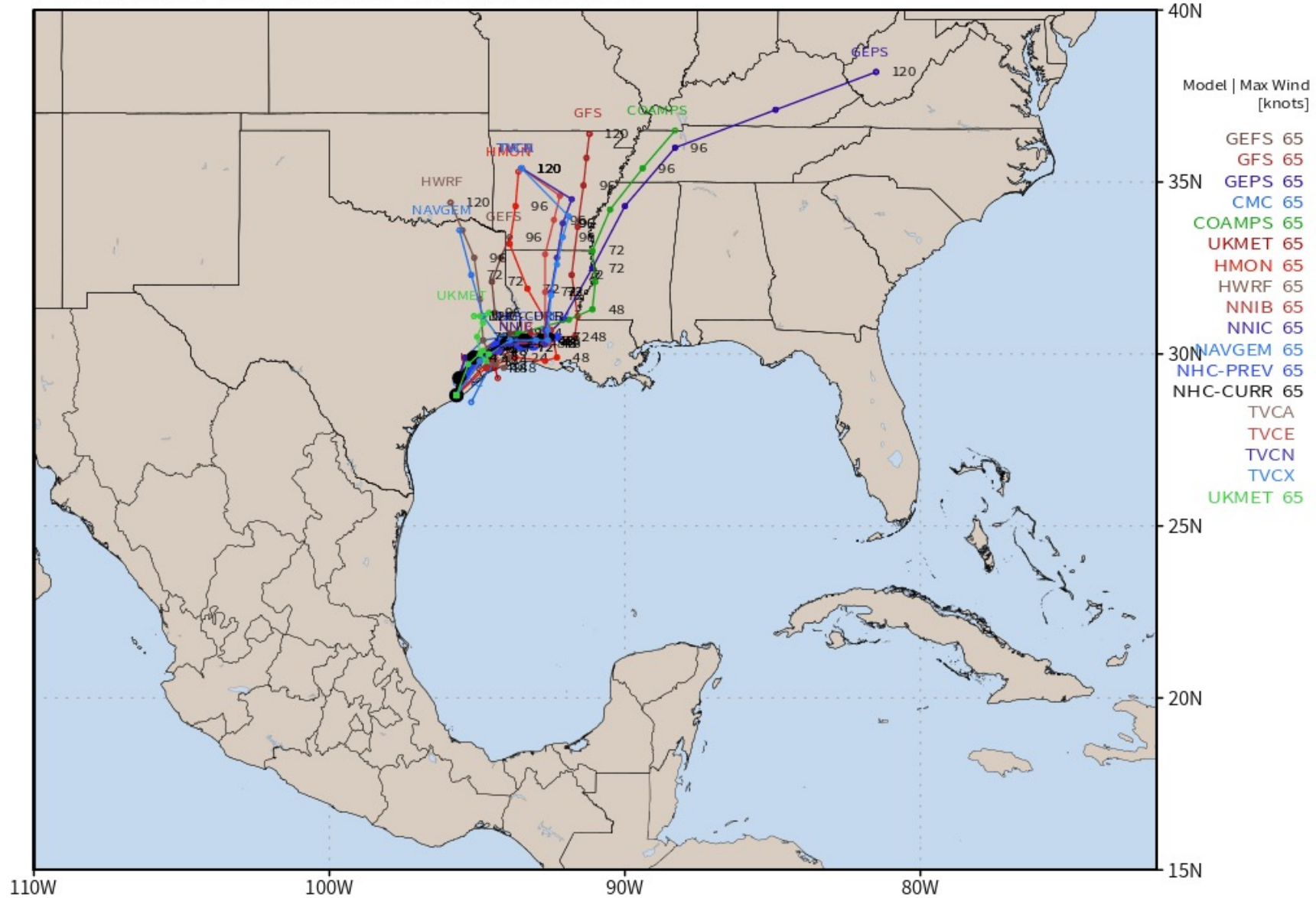
- We remain in Zulu this morning as tropical storm force winds continue in the area this morning. These likely continue for at least the next few hours but weaken as the broad center of the storm moves just to the north late this morning into the early afternoon.

- However, we expect Zulu to remain in effect until this evening due to high wave heights. The peak of wave heights will be early this morning [nearing 12+ feet at times] but we expect wave heights to lower throughout the afternoon. Latest guidance would suggest we drop waves to 6 feet by ~7PM and below 6 feet consistently ~8-9 PM.

Tropical Update:

TS Nicholas Tracks

AL14 NICHOLAS Guidance valid: 2021091406



Note: This map includes model data from 6 or 12 hours prior. Consult NHC Official Forecasts. Model guidance only expert interpretation required. Source: <https://weathermodels.com>

- Nicholas made landfall at 12:30AM CT as a Hurricane (max winds were 75 MPH) on the eastern part of the Matagorda Peninsula. The system has since been downgraded back to a Tropical Storm category.
- Still high confidence the HOU / Galveston area sees impacts from TS Nicholas out through this evening.
- Both wave heights and winds are anticipated to start lessening their impacts for the HOU / Galveston area deeper into the morning to PM hours.
- Precipitation will taper off especially after mid to late afternoon to the evening as the system departs to the north / northeast.



Visibility Report

Tuesday, September 14, 2021

HOURLY VISIBILITY BREAKDOWN (in miles)

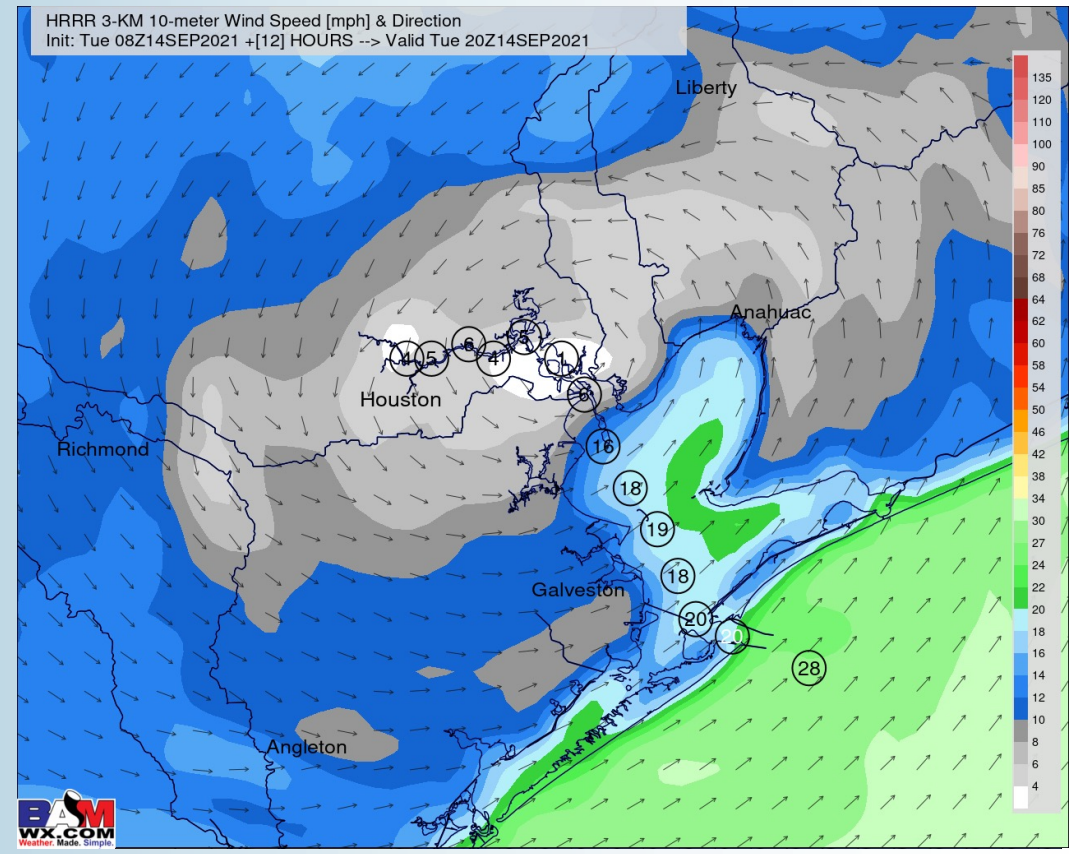
09-14-2021 Tue 3am	09-14-2021 Tue 4am	09-14-2021 Tue 5am	09-14-2021 Tue 6am	09-14-2021 Tue 7am	09-14-2021 Tue 8am	09-14-2021 Tue 9am	09-14-2021 Tue 10am	09-14-2021 Tue 11am	09-14-2021 Tue 12pm	09-14-2021 Tue 1pm	09-14-2021 Tue 2pm	09-14-2021 Tue 3pm	09-14-2021 Tue 4pm	09-14-2021 Tue 5pm	09-14-2021 Tue 6pm	09-14-2021 Tue 7pm	09-14-2021 Tue 8pm	09-14-2021 Tue 9pm	09-14-2021 Tue 10pm	09-14-2021 Tue 11pm	09-15-2021 Wed 12am	09-15-2021 Wed 1am	09-15-2021 Wed 2am	09-15-2021 Wed 3am	09-15-2021 Wed 4am	09-15-2021 Wed 5am	09-15-2021 Wed 6am	09-15-2021 Wed 7am	09-15-2021 Wed 8am	09-15-2021 Wed 9am	09-15-2021 Wed 10am	09-15-2021 Wed 11am	09-15-2021 Wed 12pm	09-15-2021 Wed 1pm	
6.096	6.096	6.067	6.096	6.096	3.633	3.507	2.958	3.948	3.948	3.383	5.525	6.108	6.067	6.061	5.661	6.062	6.107	6.944	6.964	6.964	6.964	6.964	6.964	6.964	6.964	6.964	10.000	10.000	6.096	6.513	6.964	8.988	10.000	10.000	
6.096	6.096	6.067	6.096	6.096	3.633	3.630	2.958	3.948	3.866	2.958	5.525	6.108	6.067	6.061	5.661	6.062	6.107	6.948	7.212	7.212	7.212	7.212	7.212	6.964	6.964	6.964	10.000	10.000	6.096	6.513	6.964	8.988	10.000	10.000	
5.779	5.779	5.750	5.779	5.886	3.948	3.948	3.644	3.948	2.946	2.946	4.975	5.790	5.750	5.187	5.192	6.718	7.035	8.013	8.133	8.133	7.573	7.573	7.573	7.573	6.966	6.952	10.000	8.988	5.779	6.342	6.966	8.988	10.000	10.000	
4.996	4.996	4.967	4.996	5.594	3.632	3.630	2.942	3.038	2.942	2.916	4.975	5.007	4.967	4.902	4.944	9.033	8.988	8.988	8.988	8.988	8.238	8.033	8.033	8.033	7.379	7.015	10.000	8.988	4.996	5.920	6.999	8.988	10.000	10.000	
4.931	4.931	4.902	5.171	5.886	3.948	3.948	3.948	3.244	2.952	2.589	4.942	4.942	4.902	4.902	4.902	9.033	8.988	8.988	8.988	8.988	8.988	8.174	8.033	8.174	8.033	7.342	10.000	8.988	4.931	5.886	6.999	8.988	10.000	9.999	
4.931	4.931	4.902	4.931	5.589	3.280	3.626	2.952	2.952	2.952	2.516	4.942	4.942	4.902	4.902	4.902	9.033	8.988	8.988	8.988	8.988	8.988	8.988	8.988	8.988	8.939	8.939	8.033	8.283	4.931	5.965	6.999	8.988	9.343	9.999	
4.294	4.931	3.948	4.931	4.931	2.952	2.914	2.952	2.952	2.952	2.516	4.942	4.942	4.902	4.902	4.902	9.033	8.988	8.988	8.988	8.988	8.988	8.988	8.988	8.988	8.988	8.988	8.988	8.033	5.908	6.999	7.514	8.354	8.988	9.999	
3.897	4.931	3.948	4.931	4.931	2.952	2.914	2.952	2.952	2.952	2.914	4.942	4.942	4.902	4.902	4.902	9.033	8.988	8.988	8.988	8.988	8.988	8.988	8.988	8.988	8.988	8.988	8.988	8.837	6.999	8.033	8.033	8.988	10.000	9.999	
3.897	3.897	3.948	3.897	4.573	2.952	2.749	2.952	2.952	2.952	2.914	4.942	4.942	4.902	4.902	5.861	9.033	8.988	8.988	8.988	8.988	8.988	8.988	8.988	8.988	8.988	8.988	8.988	9.636	8.033	8.033	8.822	8.988	10.000	9.999	
3.693	3.897	3.948	3.897	3.897	2.914	2.516	2.914	3.540	2.914	2.914	2.954	4.942	4.902	4.902	5.936	9.033	8.988	8.988	8.988	8.988	8.988	8.988	8.988	8.988	10.000	8.988	10.000	10.000	10.000	8.988	8.033	8.988	8.988	8.988	9.999
2.679	3.428	3.948	3.897	3.897	2.516	2.666	2.914	3.948	3.246	2.901	2.954	4.942	5.573	6.890	6.890	10.000	9.652	10.000	10.000	10.000	10.000	10.000	8.988	10.000	10.000	8.988	10.000	10.000	10.000	8.988	8.033	8.988	8.988	8.988	9.999
2.466	2.943	3.812	5.231	10.000	2.622	3.682	2.914	4.902	4.777	2.914	4.754	6.174	6.446	6.899	6.913	10.000	10.000	10.000	10.000	10.000	10.000	10.000	10.000	10.000	10.000	8.988	10.000	10.000	10.000	8.988	8.988	8.988	8.988	8.988	10.000
2.466	2.943	3.948	6.326	10.000	2.914	3.948	3.636	4.902	4.902	3.119	4.942	6.174	6.446	6.899	6.913	10.000	10.000	10.000	10.000	10.000	10.000	10.000	10.000	10.000	10.000	9.665	10.000	10.000	10.000	8.988	8.988	8.988	8.988	8.988	10.000
2.215	3.897	3.948	6.920	9.786	3.655	4.050	4.627	4.902	4.902	3.948	4.942	5.897	5.951	6.890	7.632	10.000	10.000	10.000	10.000	10.000	10.000	10.000	10.000	10.000	10.000	10.000	10.000	10.000	10.000	8.988	8.988	8.988	8.988	8.988	10.000

- The reduced visibility being shown above will be from Tropical Storm Nicholas' heavy precipitation, not fog.**

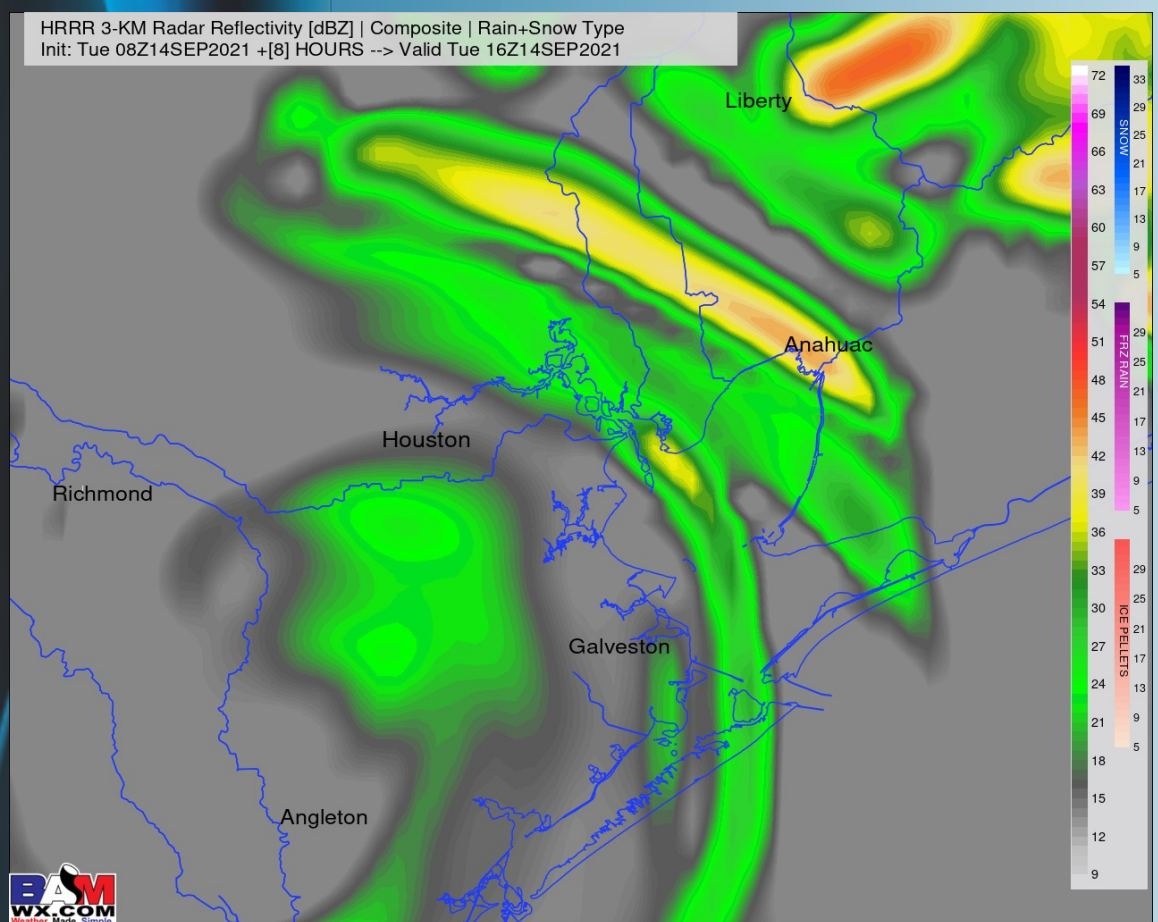
Short-Term Forecast Discussion

- Heavy / gusty showers and thunderstorms look to continue through mid-morning. Late morning to afternoon looks to see lessening chances of precipitation, and especially towards the evening hours today.
- Sustained winds this morning are expected to veer out of the SE, sustained at 25-35 MPH (locally 40 MPH) through mid-morning. 20-30 MPH sustained winds expected 8AM-mid afternoon South / Southeast. Getting into evening/nighttime 15-25 MPH sustained winds out of the West.
- At this moment, 6'+ is favored for the boarding station (like shown in bottom right) to continue through ~8PM.
- *No fog anticipated for today to tonight, but reduced visibility will be possible in heavier showers.*

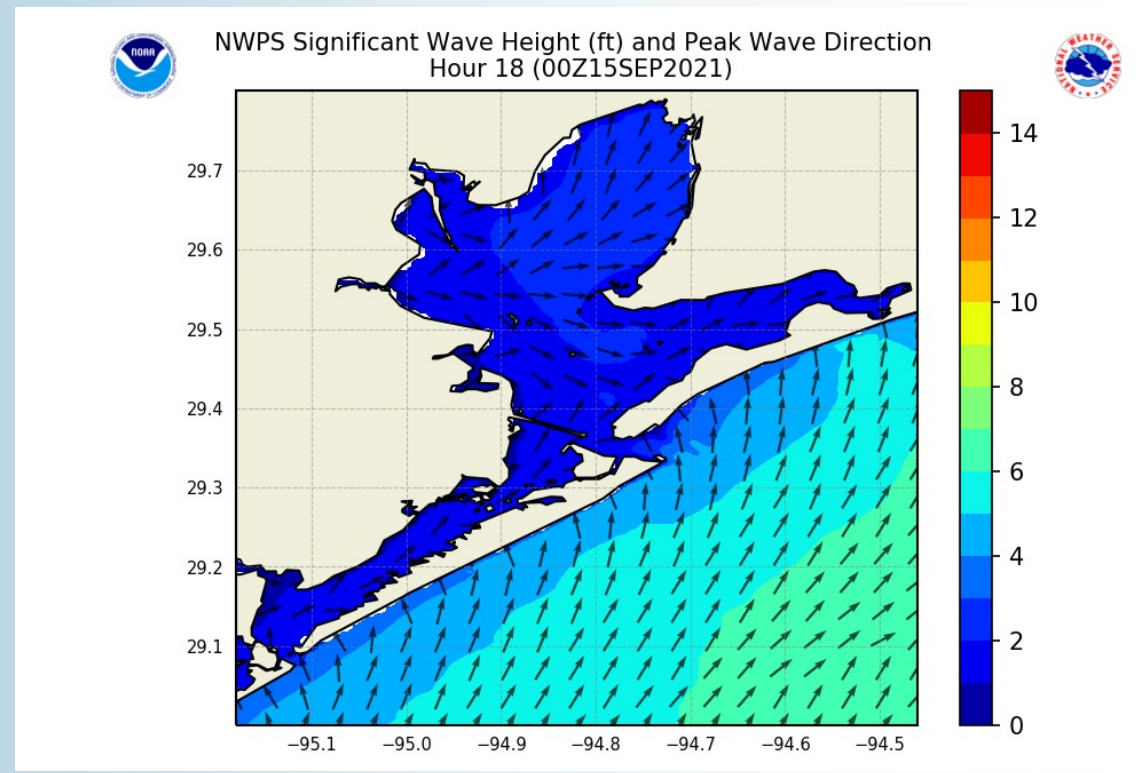
Sustained Winds (3 PM CT)



Simulated Radar Snapshot (11 AM CT)



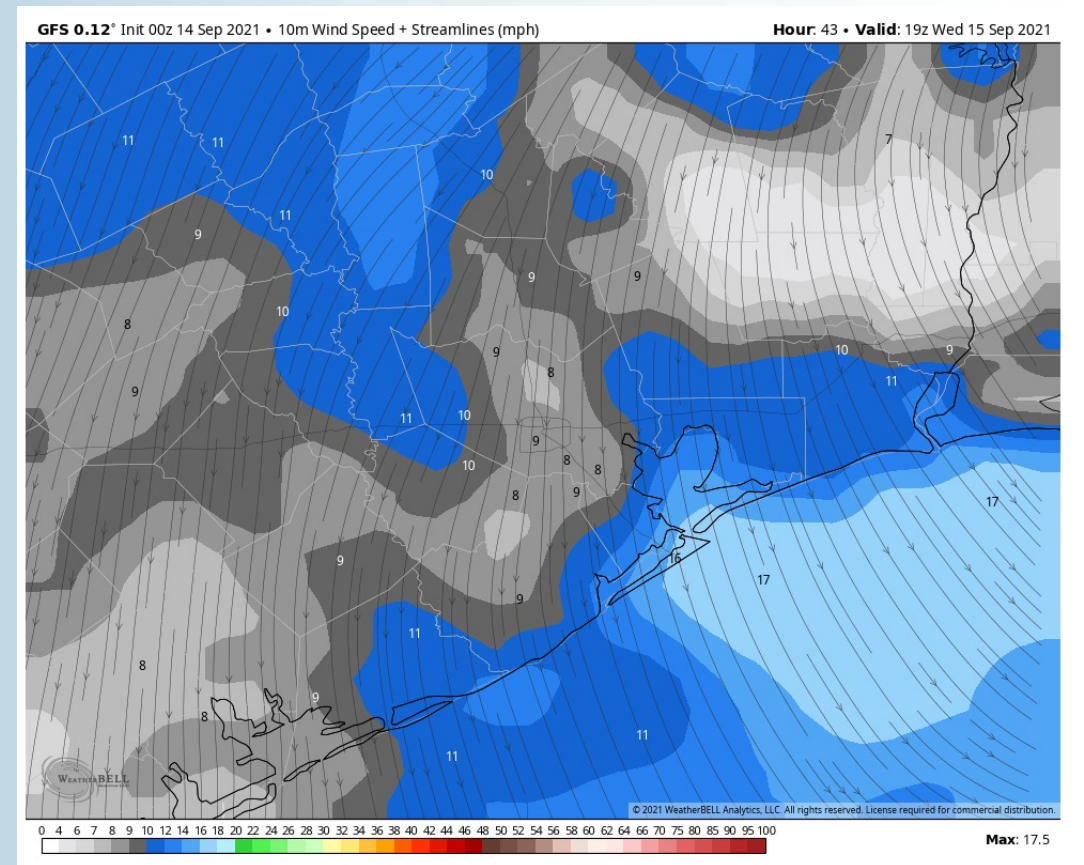
Wave Heights: 8 PM CT



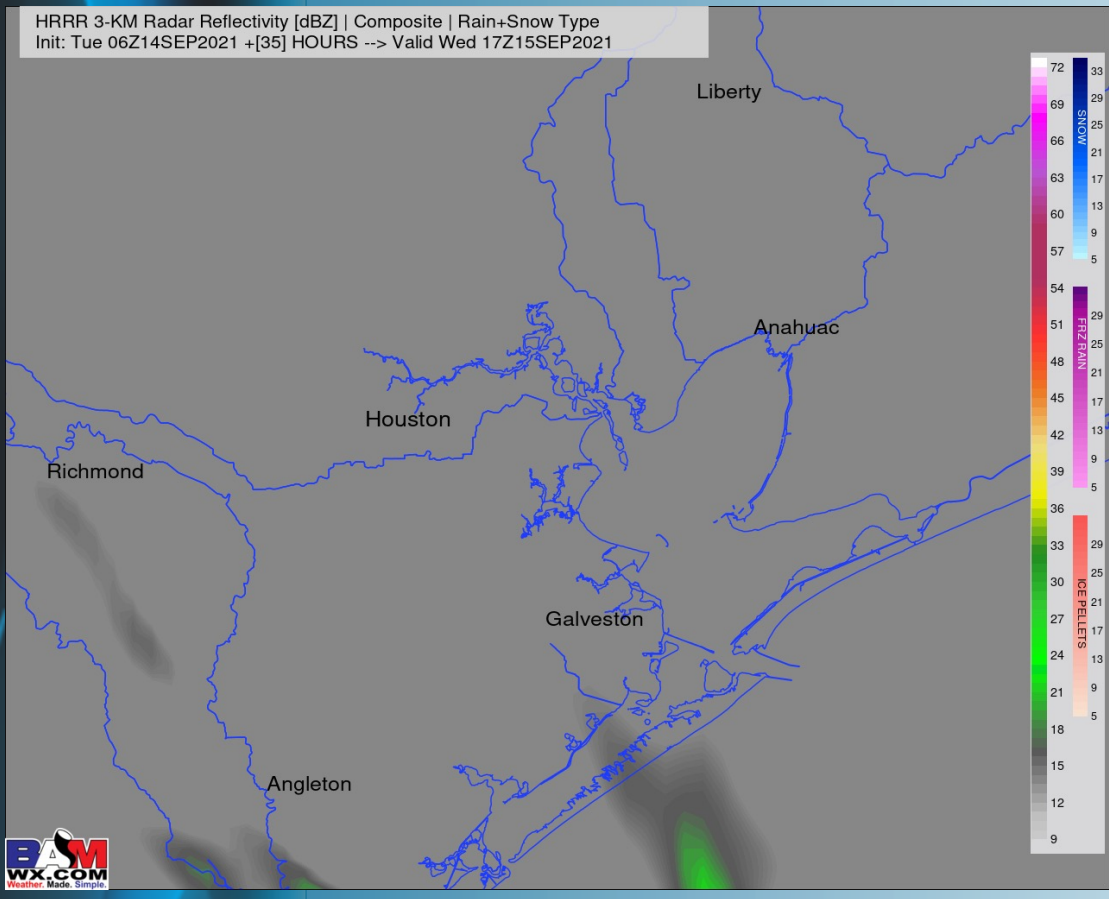
Short-Term Forecast Discussion

- Overall, Wednesday is expected to trend towards a drier day across the HOU metro area towards the Boarding Station.
- Winds will remain elevated at this time, expecting to be sustained at West to Northwest at 10-15 MPH, gusting at times up to 20-30 MPH (especially through early afternoon - tapering off deeper into the PM hours we go).
- High temperatures look to return back into the mid 80s on Wednesday, especially further in-land towards HOU.
- ***No fog is anticipated for WED.***

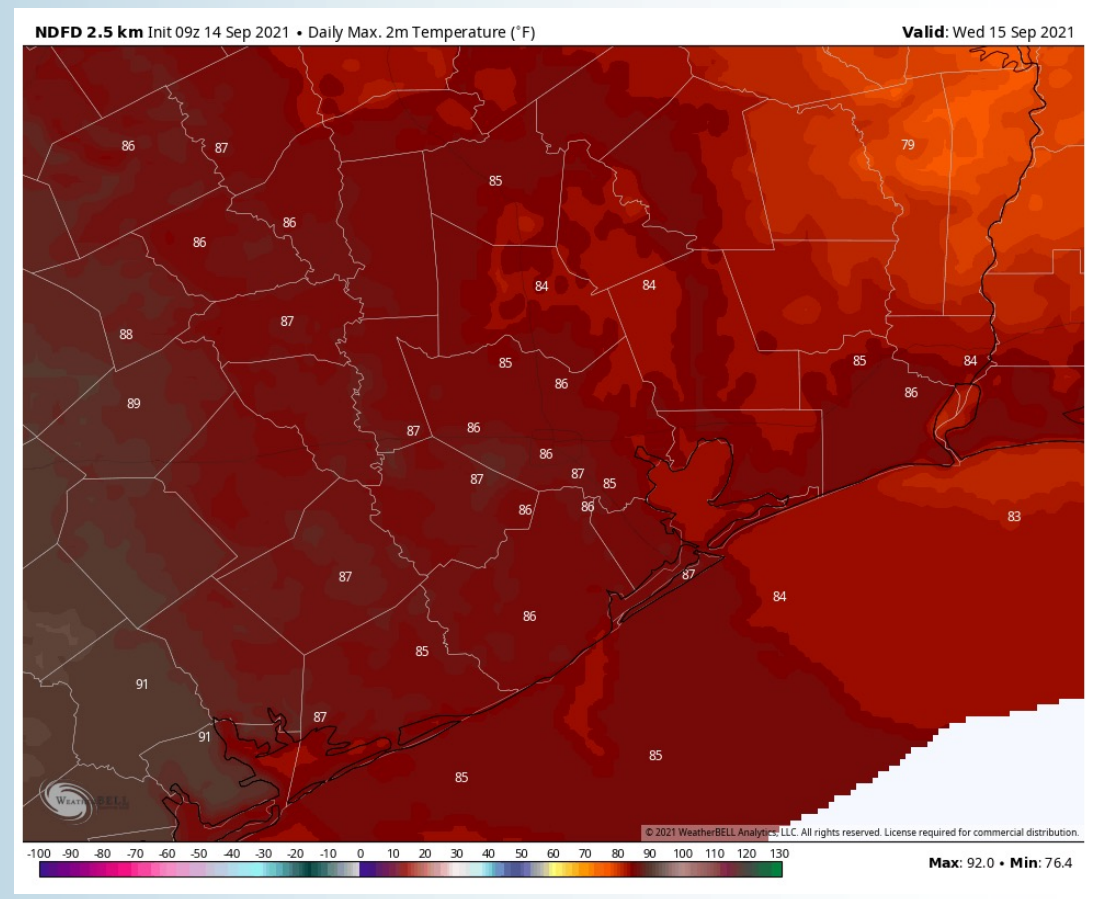
Sustained Winds (2 PM CT)



Simulated Radar Snapshot (12 PM CT)



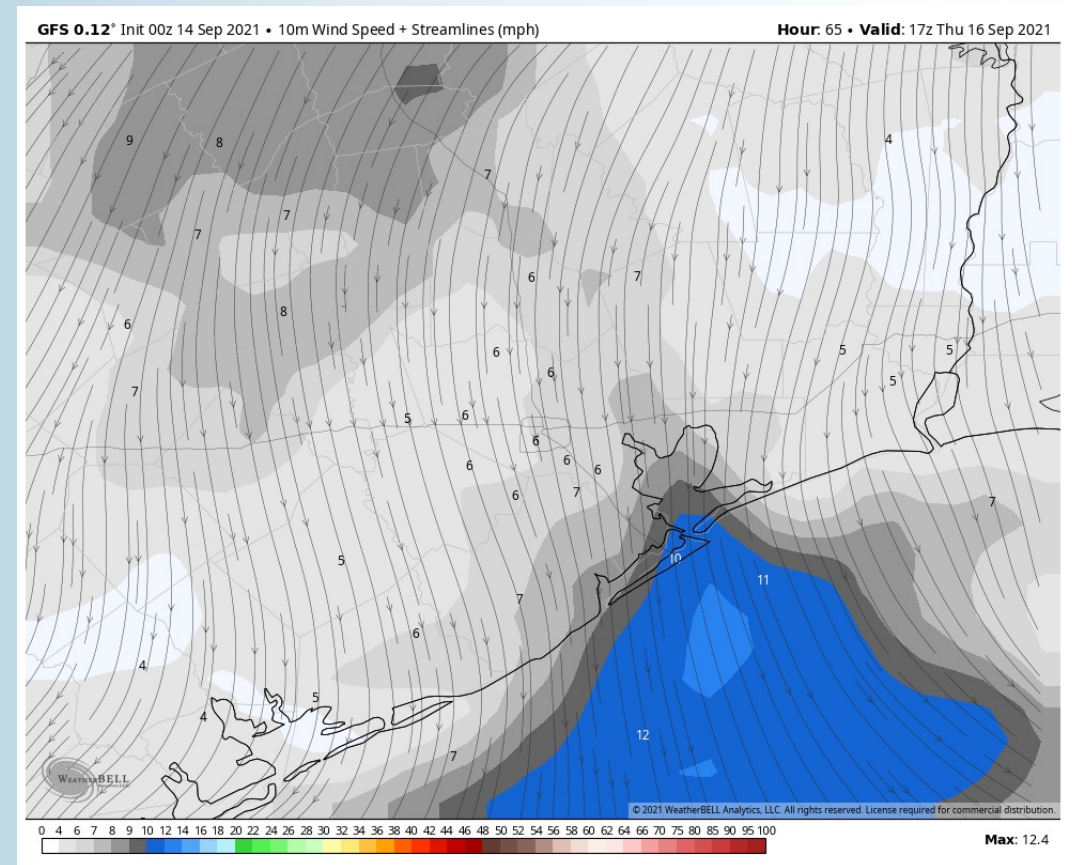
High Temperatures Wednesday



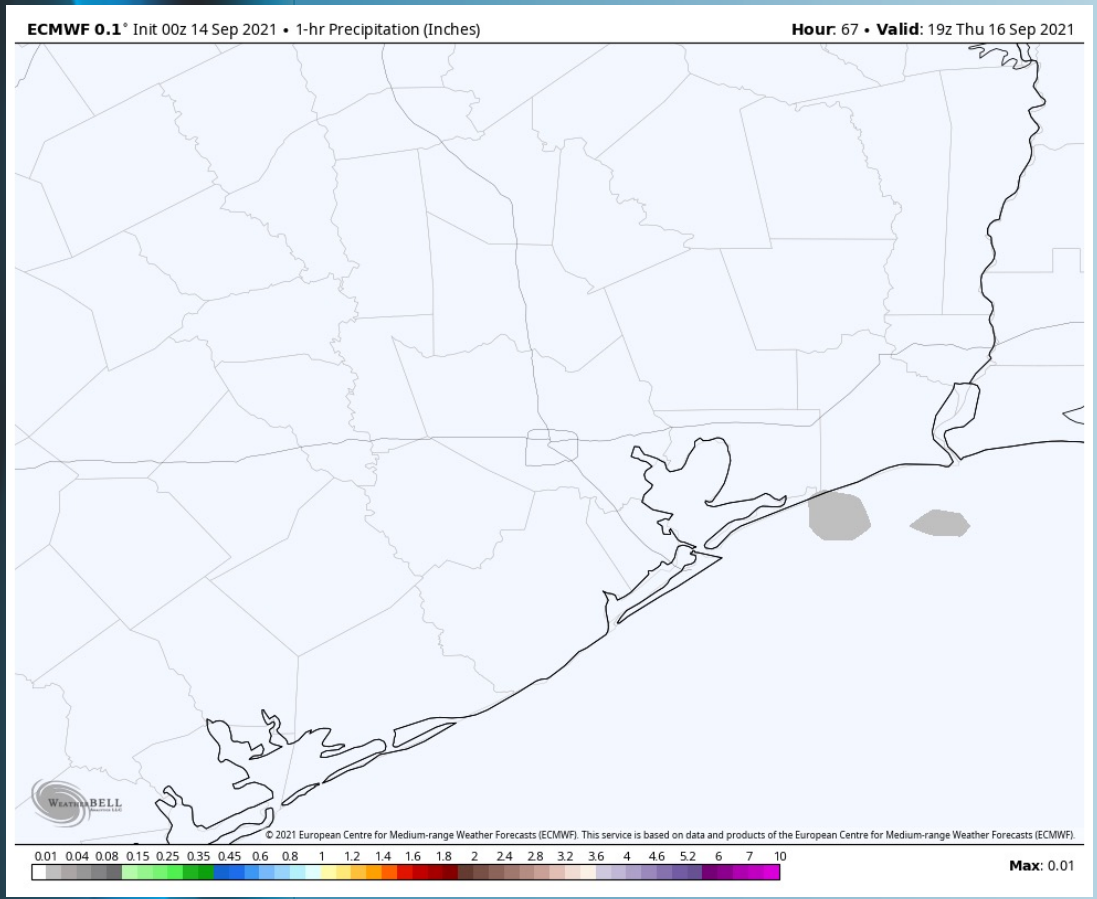
Short-Term Forecast Discussion

- Think Thursday overall is another dry day for HOU / Boarding Station locations. An isolated shower can't be ruled out, but mainly east of the forecast area.
- Winds will weaken on Thursday, mainly out of the North to North-Northwest at 5-10 MPH sustained.
- High temperatures look to return back into the mid-to-upper 80s on Thursday, especially further in-land towards HOU.
- *No fog is anticipated for THU.*

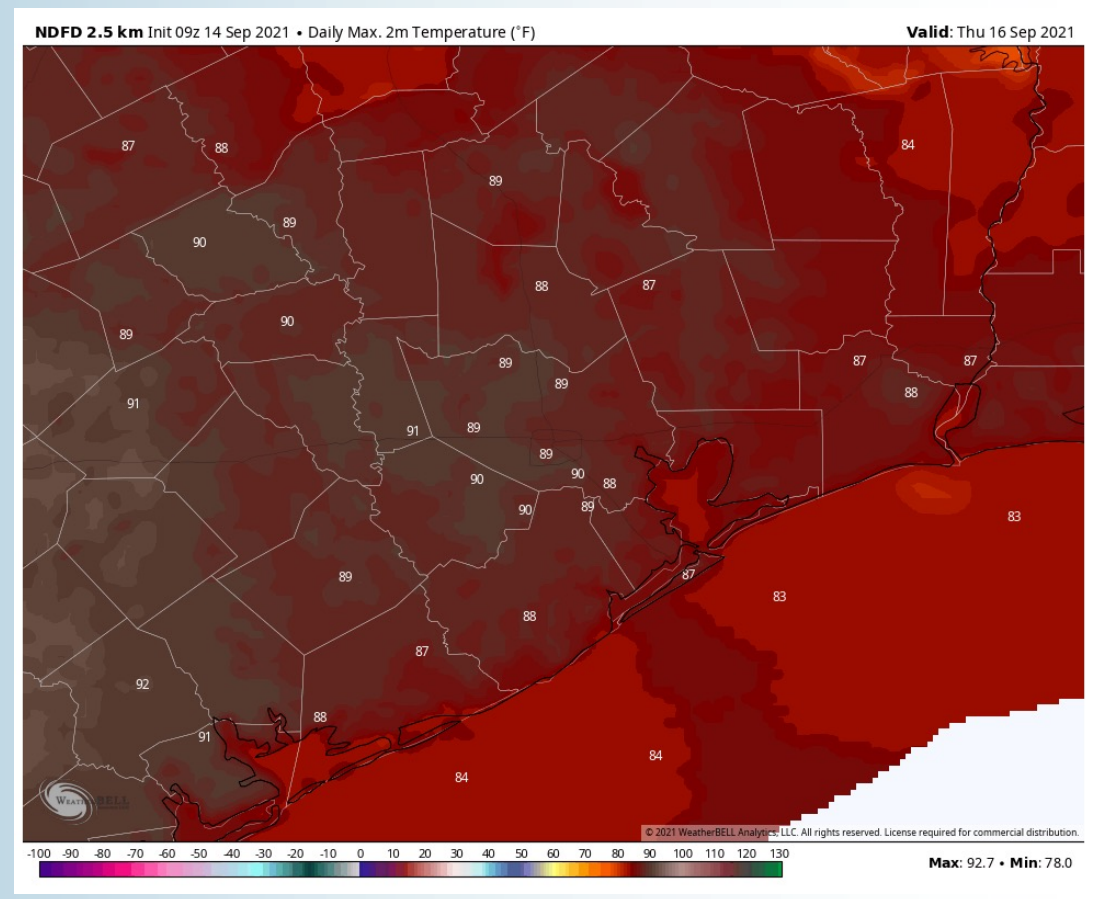
Sustained Winds (12 PM CT)



Simulated Radar Snapshot (2 PM CT)



High Temperatures Thursday



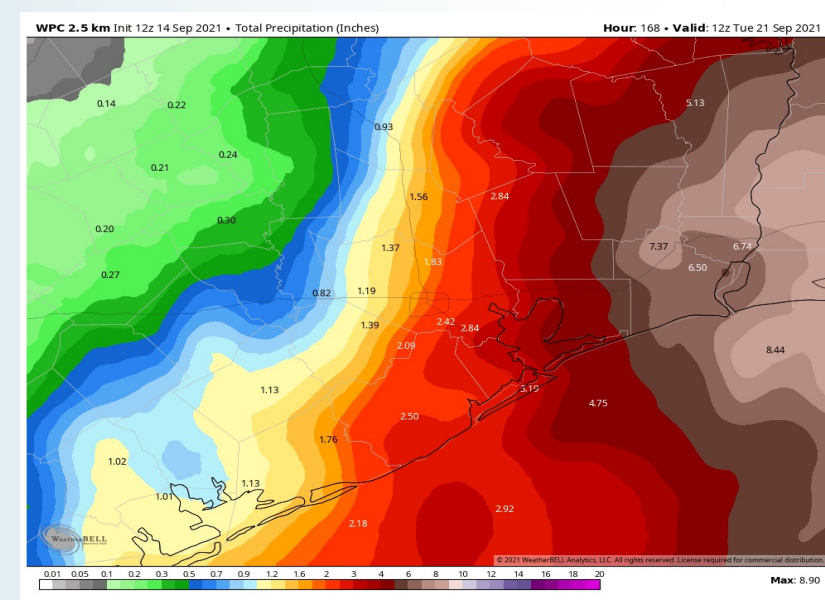
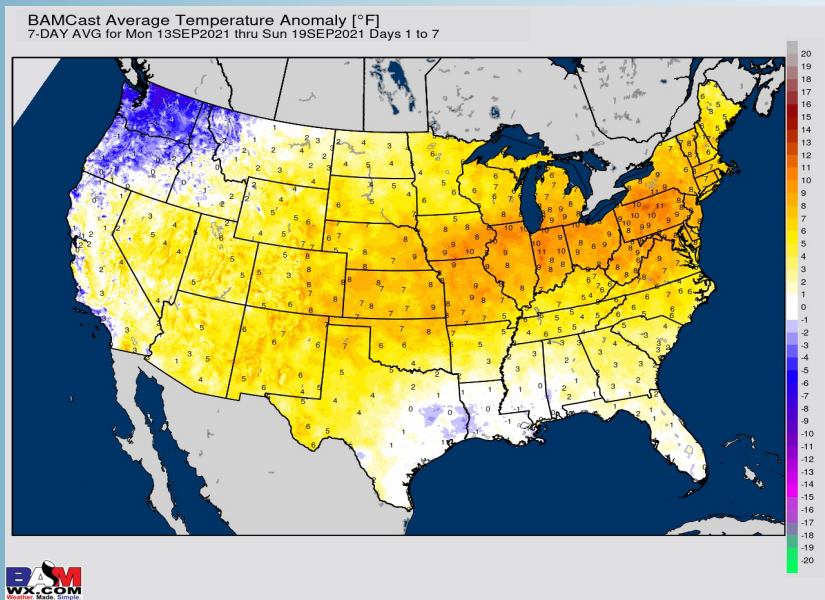
Long-Range Forecast Discussion

- Areas at and southwest of our forecast area have already seen 5"+ of rainfall with TS Nicholas. Multiple bouts of heavy rain will be possible today, especially this morning to the afternoon hours. After this tropical system departs later today, the forecast becomes significantly more quiet across the forecast area through late week. Moisture looks to pick back up heading into this weekend to early next week. Temps average out to near-normal in this period ahead.

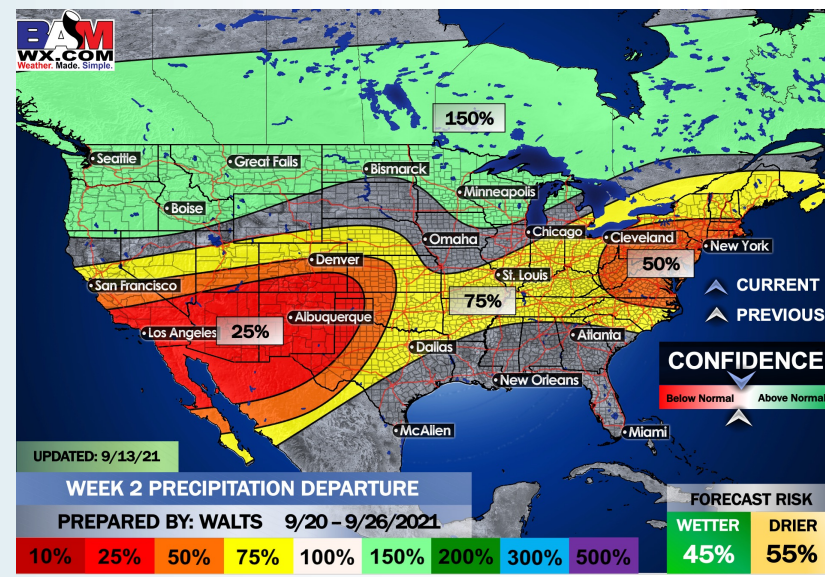
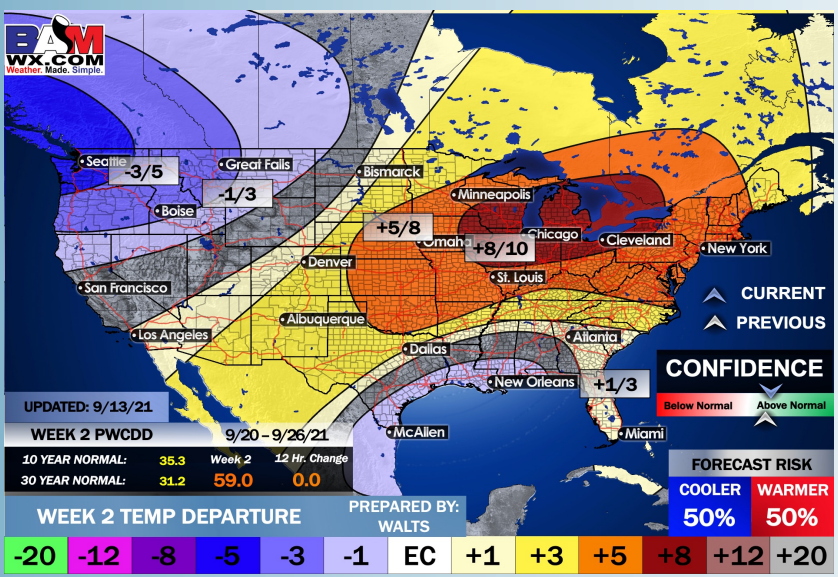
- The week 2 timeframe is expected to have above average precipitation with near-normal temps. The pattern continues to favor tropical moisture into the area, especially early in the period as the aforementioned system exits. Not eyeing a specific threat for a tropical storm or hurricane at this distance, but will need to continue to monitor.

- Right now, we have the risk of above normal temps and normal precipitation for the weeks 3/4 period. We will continue to monitor for tropical disturbances during this time. All it takes is for one system for above normal rainfall. However, avoiding tropical systems may introduce drier risks. The forecast may ultimately be "boom or bust" in regards to precipitation potential.

Week 1 Forecast



Week 2 Forecast



Weeks 3/4 Forecast

