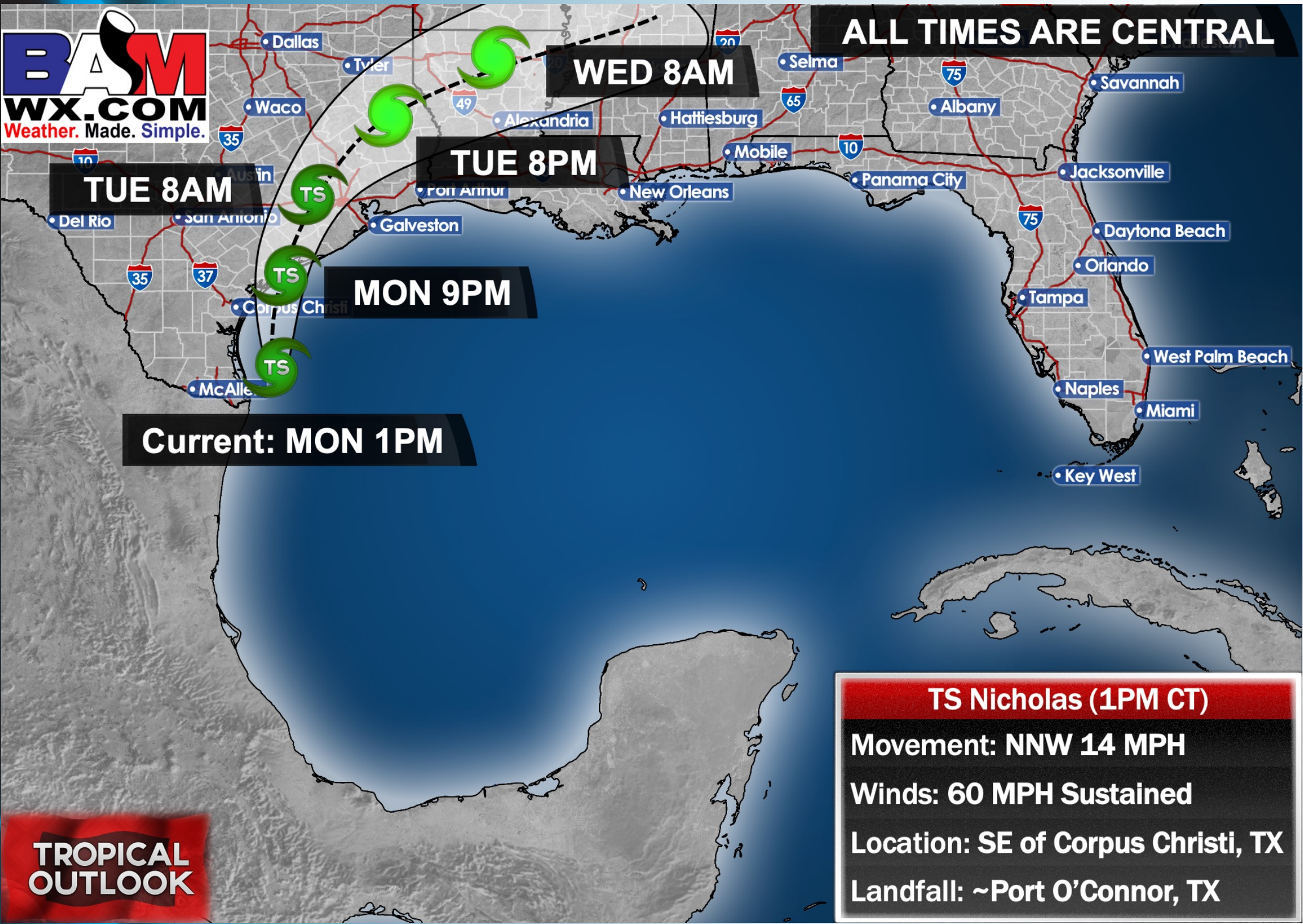


**Updated: 1:20 PM CT, Monday, September 13, 2021**

- **As always, please do not hesitate to reach out to us with any forecast questions via the chat option on the Weather Porthole or our on-call number, **(317)-560-8122** press 1 for forecast questions.**
- **TROPICAL STORM NICHOLAS PM VIDEO:**  
[http://youtu.be/G6MAR\\_FLwM8?hd=1](http://youtu.be/G6MAR_FLwM8?hd=1)

# Tropical Update:

## BAMWX TS Nicholas Track



# TROPICAL DETAILS

Monday, September 13, 2021

**\*No Change to this  
Forecast\***

## WINDS FOR THE BOARDING STATION

***Monday (5AM to ~5 PM) – 15 to 25  
MPH with gusts 25 to 30 MPH  
possible***

***Mon - Tue (~5 PM to ~10 PM) – 25  
to 35 MPH with gusts 30 – 40 MPH  
possible***

***Tuesday (~10 PM to ~5AM) – 35 to  
50 MPH with gusts 45 to 60 MPH  
possible***

***Tue - Wed (~5AM to ~7 AM) – 20 to  
30 MPH with gusts 25 – 40 MPH  
possible [decreasing towards  
lower-end Tue. Night]***

## WAVES AT THE BOARDING STATION

- 6+ foot waves favored to  
start ~10 AM Monday***
- MAX Wave Height: ~12  
feet, ~10AM Tuesday***
- 6+ foot waves favored to  
end ~9 PM Tuesday***

## Trigger Thresholds for Houston Pilots Boarding Station:

Trigger met at:	Sustained winds 39+ MPH	Consistent Waves of 6 Feet+	Expected time when trigger will end + hours remaining
Victor	N/A	N/A	N/A
Whiskey	N/A	N/A	N/A
X-Ray	N/A	N/A	N/A
Yankee	N/A	N/A	N/A
Zulu	N/A	IN EFFECT	TUE 9/14/21 @ 9 PM CT

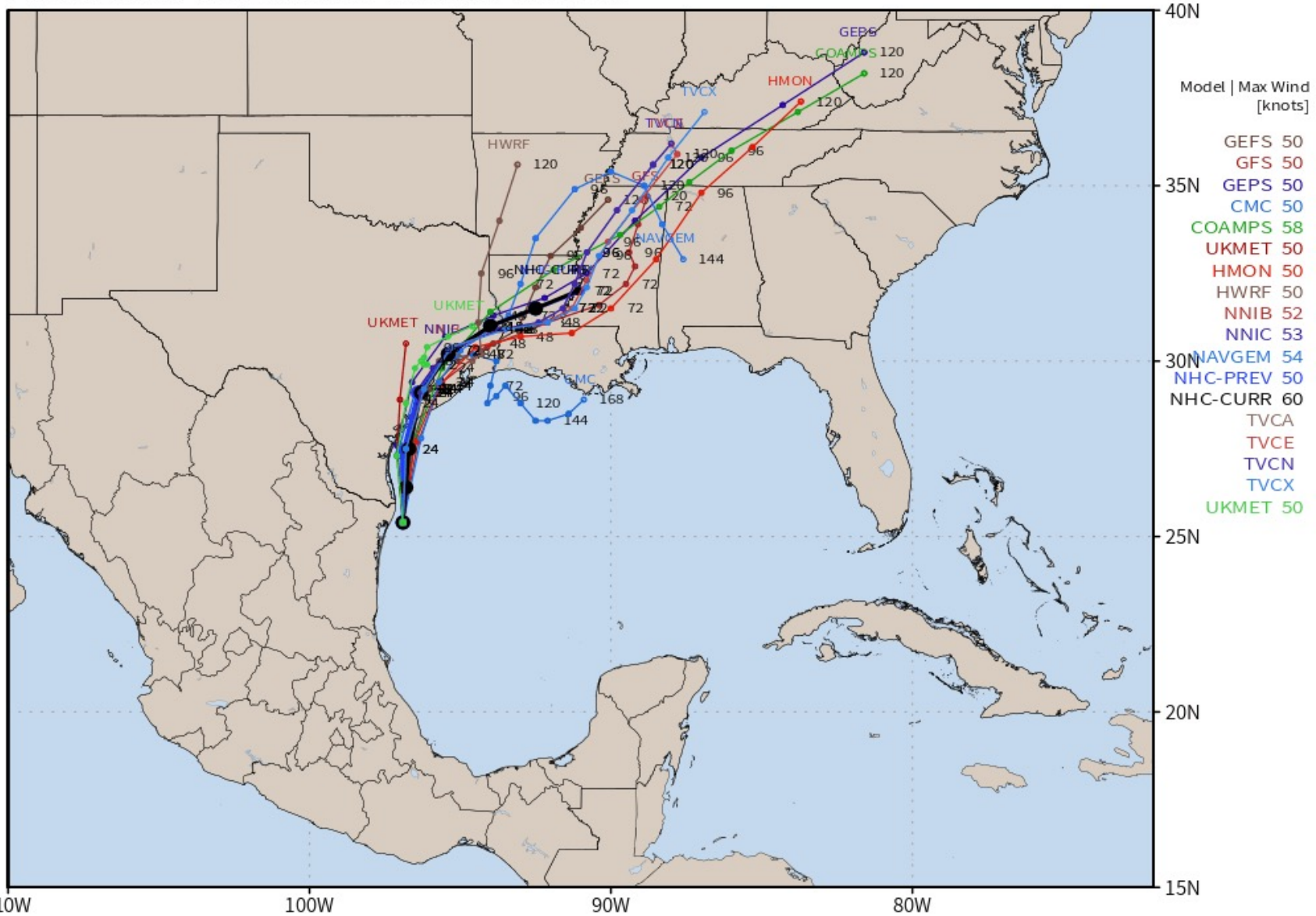
Port Condition	Definition Of Triggers	Trigger Reached
Victor	Hurricane entering or developing in the Gulf of Mexico	NO
Whiskey	72 hrs. prior to predicted sustained winds 39+ MPH	NO
X-Ray	48 hrs. prior to predicted sustained winds of 39+ MPH OR 6' wave height	YES
Yankee	24 hrs. prior to predicted sustained winds of 39+ MPH OR 6' wave height	YES
Zulu	12 hrs. prior to predicted sustained winds of 39+ MPH OR 6' wave height	YES

- Data is converging on a landfall near Port O'Conner, TX – about 115 miles southwest of Galveston, TX with a track inland north of Houston early this week.
- The track of Nicholas has sped up a bit as it is already just southeast of the southern tip of Texas.
- Given this tick northward a little bit fast, we believe that it is necessary to go ahead and trigger Zulu. We are speeding up the onset of 6 ft waves for the boarding station by 10AM CT this morning. We continue to favor winds to reach Tropical Storm threshold after 6 foot waves arrive.
- As our stations will likely be on the E side of Nicholas, storm surge is certainly something that needs to be monitored. Latest indications would suggest that a storm surge of 2-4 feet is likely for all stations, though there are some hints that up to a 5 - 6 foot storm surge cannot be ruled out especially for our northern stations (76/76, Morgan's Point, etc.).

# Tropical Update:

## TS Nicholas Tracks

AL14 NICHOLAS Guidance valid: 2021091312



Note: This map includes model data from 6 or 12 hours prior. Consult NHC Official Forecasts. Model guidance only expert interpretation required. Source: <https://weathermodels.com>

- Still high confidence the HOU / Galveston area sees impacts from TS Nicholas out through Tuesday evening.
- Peak conditions in both wave heights and winds are likely found starting later tonight to Tuesday morning as this wave nears the HOU / Galveston area.
- Winds will continue to remain at near tropical storm force upon arrival to the Bay locations to HOU metro through Tuesday daybreak.



# Visibility Report

## Monday, September 13, 2021

# HOURLY VISIBILITY BREAKDOWN (in miles)

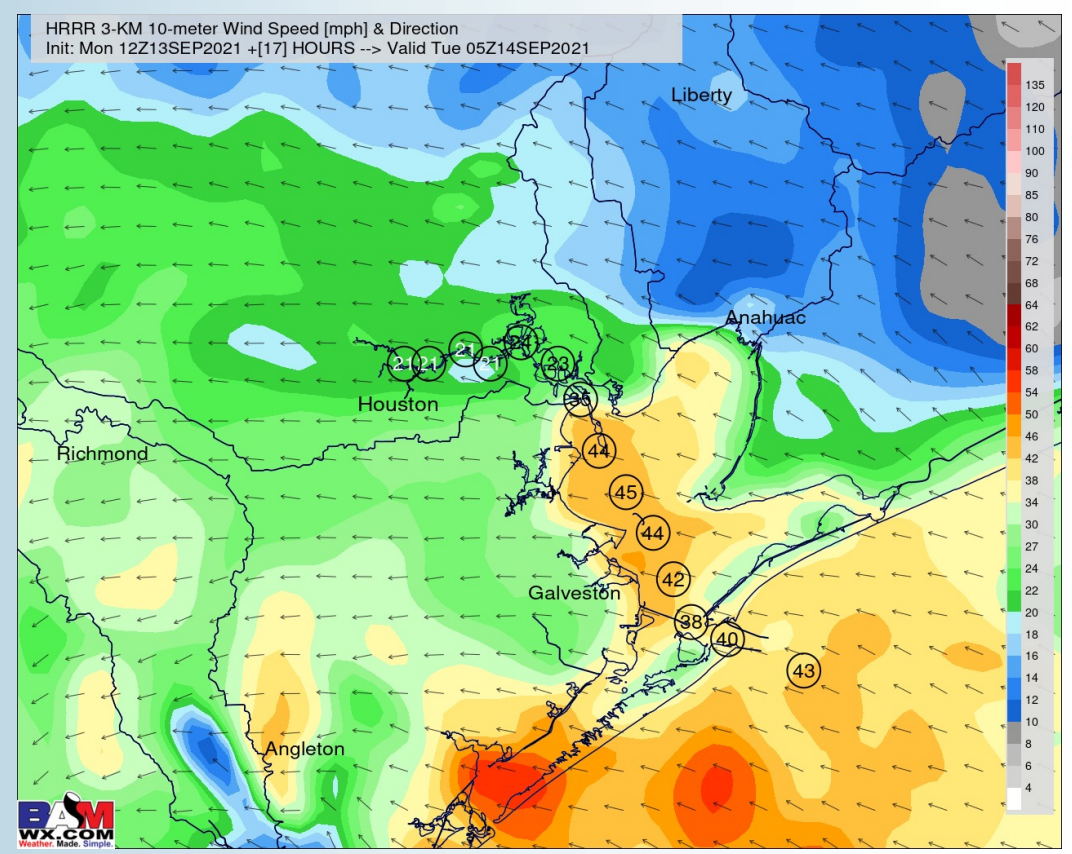
Location	09-13-2021 Mon 11am	09-13-2021 Mon 12pm	09-13-2021 Mon 1pm	09-13-2021 Mon 2pm	09-13-2021 Mon 3pm	09-13-2021 Mon 4pm	09-13-2021 Mon 5pm	09-13-2021 Mon 6pm	09-13-2021 Mon 7pm	09-13-2021 Mon 8pm	09-13-2021 Mon 9pm	09-13-2021 Mon 10pm	09-13-2021 Mon 11pm	09-14-2021 Tue 12am	09-14-2021 Tue 1am	09-14-2021 Tue 2am	09-14-2021 Tue 3am	09-14-2021 Tue 4am	09-14-2021 Tue 5am	09-14-2021 Tue 6am	09-14-2021 Tue 7am	09-14-2021 Tue 8am	09-14-2021 Tue 9am	09-14-2021 Tue 10am	09-14-2021 Tue 11am	09-14-2021 Tue 12pm	09-14-2021 Tue 1pm	09-14-2021 Tue 2pm	09-14-2021 Tue 3pm	09-14-2021 Tue 4pm	09-14-2021 Tue 5pm	09-14-2021 Tue 6pm	09-14-2021 Tue 7pm	09-14-2021 Tue 8pm	09-14-2021 Tue 9pm	
Pilots Bridge	2.999	2.477	3.908	2.999	2.871	3.908	4.942	3.908	4.942	4.942	4.942	3.908	3.948	3.948	2.958	3.948	3.943	3.943	5.514	6.096	6.062	2.780	2.933	3.943	4.897	4.897	3.943	4.897	6.930	6.964	7.389	7.793	8.280	8.774	8.704	
Pilots Der 1	2.999	2.477	3.908	2.999	3.908	3.908	4.942	3.908	4.942	4.942	4.942	4.591	3.948	3.948	2.958	3.948	5.279	6.051	5.514	6.096	6.062	2.780	2.937	4.244	4.917	5.930	5.279	5.983	7.422	7.212	7.462	7.462	7.954	7.954	7.954	
Pilots L Bayou	3.362	2.477	3.908	2.978	3.908	4.942	4.942	3.908	4.942	4.942	4.942	4.942	3.948	3.948	2.946	3.948	6.930	8.768	6.316	5.779	5.745	2.526	2.933	3.943	4.944	7.325	6.930	7.325	8.146	7.573	8.133	8.133	8.133	8.133	8.560	
Pilots K Crude	4.130	2.673	4.006	3.908	3.908	4.942	4.942	3.908	4.942	4.942	4.942	4.942	3.948	3.948	3.494	3.948	9.033	10.000	6.636	4.996	4.962	2.526	2.937	4.391	6.011	8.811	9.033	9.033	9.033	9.033	8.364	8.988	8.988	8.988	8.988	8.988
Pilots J Burg es	4.350	2.954	4.006	3.908	3.908	4.942	4.942	3.908	4.942	4.942	4.942	4.942	3.948	3.948	3.494	3.948	9.033	10.000	7.737	5.432	5.398	2.511	2.909	4.022	6.011	8.811	9.033	9.033	9.033	9.033	8.364	8.988	8.988	8.988	8.988	8.988
Pilots I n 3	5.773	3.908	4.942	3.908	3.908	4.942	4.942	3.908	4.942	4.942	4.942	4.942	3.948	3.948	3.948	3.948	10.000	10.000	8.966	5.886	4.897	2.712	3.283	4.806	6.011	8.811	9.033	9.033	9.033	9.033	8.364	8.988	8.988	8.988	8.988	8.988
Pilots gans t	6.931	3.908	4.942	3.908	3.908	4.942	4.942	3.908	4.942	4.942	4.942	4.942	3.948	3.948	3.948	3.948	10.000	10.000	10.000	5.886	4.922	4.022	3.283	4.977	6.486	9.033	9.033	9.033	9.033	9.033	8.783	8.988	8.988	8.988	8.988	8.988
Pilots /76	6.931	5.799	4.942	4.942	4.403	5.458	4.942	3.908	5.897	4.942	4.942	4.866	3.948	3.948	3.948	3.948	10.000	10.000	10.000	5.488	4.897	4.022	3.943	4.977	7.522	9.033	9.033	9.033	9.033	9.033	8.783	8.988	8.988	8.988	8.988	8.988
Pilots F 64	6.931	6.931	4.942	4.942	5.897	6.499	5.897	3.908	5.897	4.942	4.942	3.908	3.948	3.948	3.948	3.948	10.000	10.000	10.000	5.868	6.885	3.924	4.855	4.977	7.999	9.033	9.033	9.033	9.033	9.033	8.783	8.988	8.988	8.988	8.988	8.988
Pilots E 52	6.931	6.931	4.942	4.942	5.897	6.931	5.897	4.354	6.654	4.942	5.353	3.908	3.948	3.948	3.948	3.948	9.033	10.000	8.988	7.447	6.885	3.943	4.857	5.528	8.627	9.033	9.033	9.033	9.033	9.033	8.783	8.988	8.988	10.000	8.988	8.988
Pilots D 38	7.885	6.931	4.942	4.942	6.287	6.931	5.897	4.354	6.931	5.693	5.353	3.908	3.948	3.948	3.948	3.948	9.033	10.000	8.444	7.447	6.885	3.943	4.897	6.653	9.033	9.033	9.033	9.033	10.000	8.988	8.988	8.988	10.000	9.813	8.988	
Pilots C 26	8.242	7.640	4.942	4.942	6.931	6.931	5.897	4.229	6.931	6.931	4.942	3.908	3.948	3.948	3.948	3.948	9.033	10.000	8.329	7.448	8.892	4.451	5.126	6.846	9.033	9.033	9.033	10.000	10.000	8.988	8.988	8.988	10.000	10.000	10.000	
Pilots B 12	10.000	8.999	4.942	4.942	6.931	7.885	6.931	5.063	7.107	6.931	5.500	4.041	3.948	3.948	3.948	3.948	10.000	10.000	9.535	8.549	8.892	4.451	5.126	6.846	9.033	9.033	9.033	10.000	10.000	8.988	8.988	8.988	10.000	10.000	10.000	
Pilots A Bravo	10.000	9.910	6.053	5.723	8.792	7.885	6.931	5.897	10.000	6.931	6.355	4.942	3.948	3.948	3.948	3.948	10.000	10.000	10.000	10.000	5.864	4.022	4.179	5.559	8.366	9.033	9.033	9.871	10.000	8.988	10.000	10.000	10.000	10.000	10.000	

***The reduced visibility being shown above will be from Tropical Storm Nicholas' heavy precipitation, not fog.***

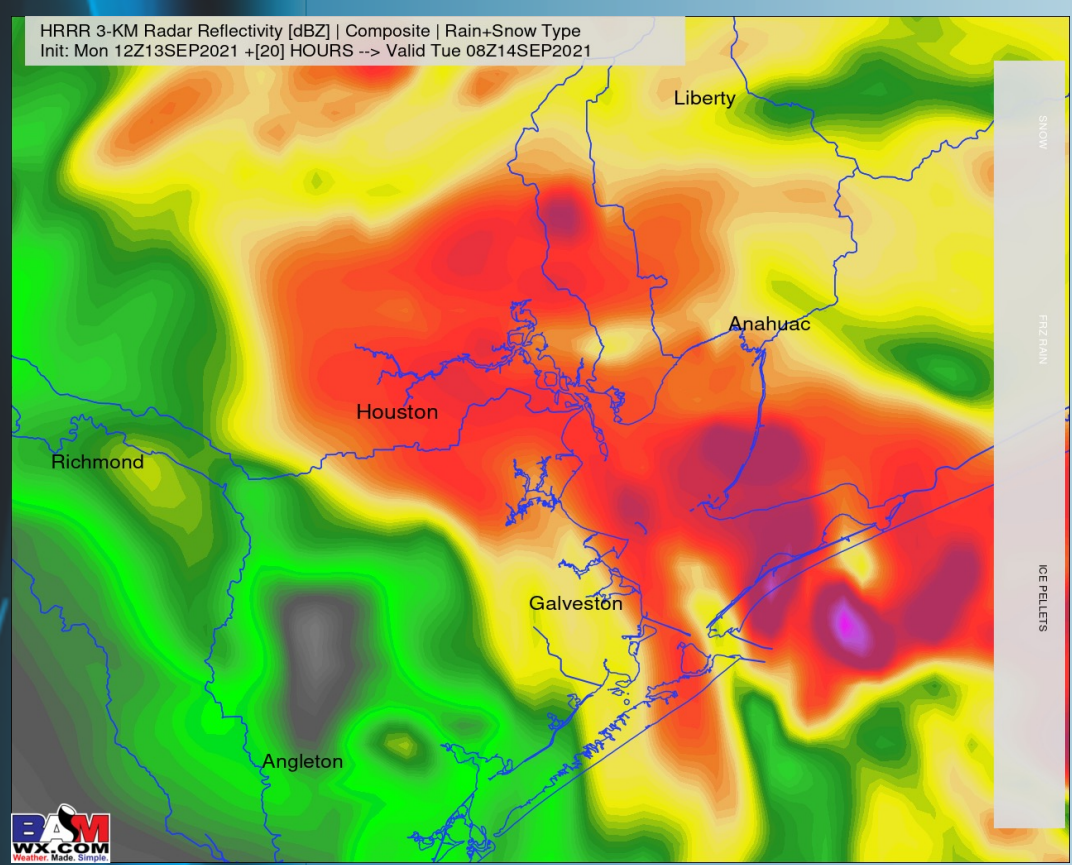
## Short-Term Forecast Discussion

- Showers and thunderstorms look to be the most widespread and impactful especially after 5PM tonight through daybreak Tuesday morning. Rainfall rates of 1-2"/hour will be possible at times. Severe threat still looks rather low. Little to no dry time is favored for tonight into the overnight.
- Winds are expected consistently out of the Southeast, sustained this afternoon through sunset at 15-25 MPH. Sunset through ~3AM winds increase sustained at 25-35 MPH, gusting up to 40-50 MPH at times. Winds from 3AM to sunrise are expected to ramp up to 35-45 MPH sustained (at times 50 MPH sustained). Gusts here are expected to increase to 50-65 MPH.
- Significant wave heights into the overnight, as discussed in the videos, are expected to top 6 feet to over 10 feet across the Boarding Station through daybreak TUES.
- *No fog anticipated for tonight, but reduced visibility will be possible in heavier storms.*

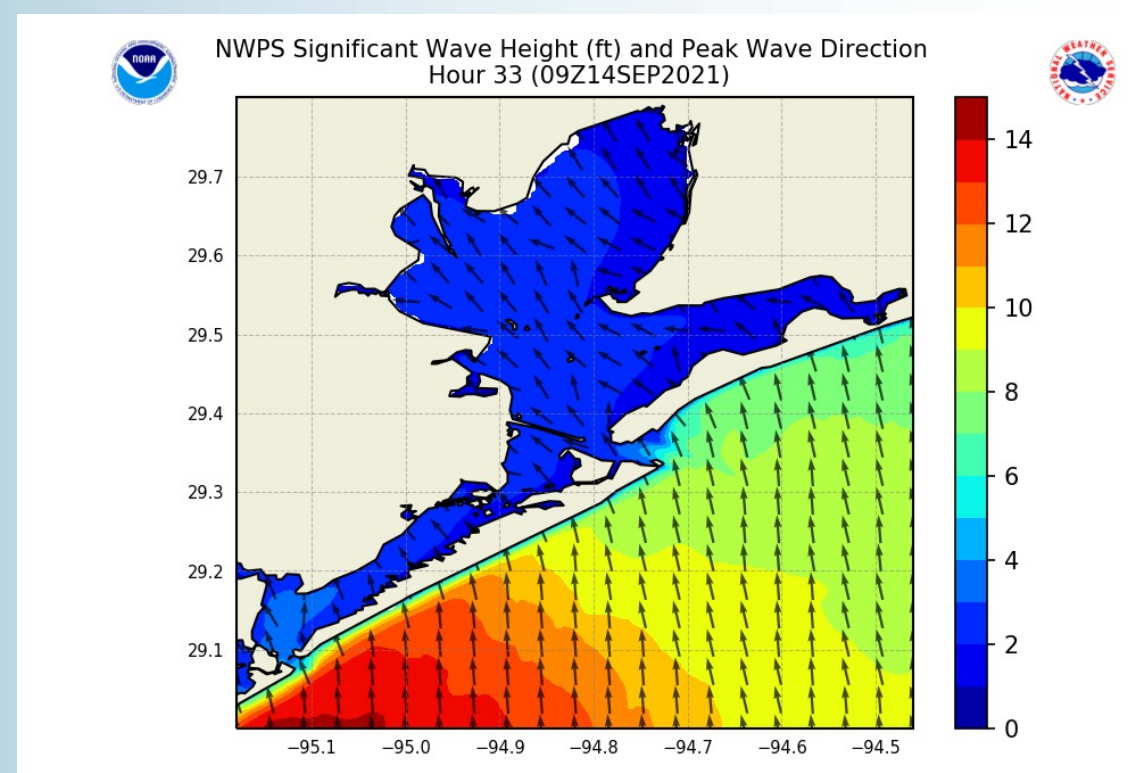
## Sustained Winds (12 AM CT)



## Simulated Radar Snapshot (3 AM CT)



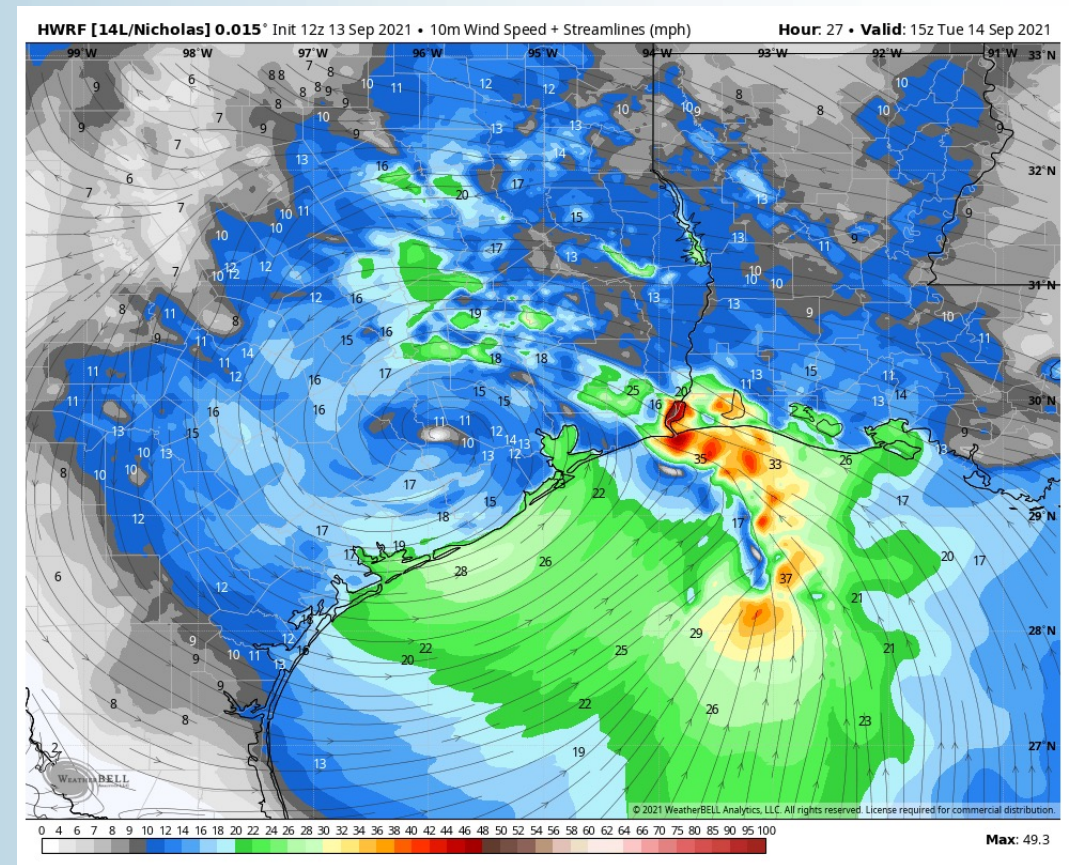
## Wave Heights: 4 AM CT Tonight



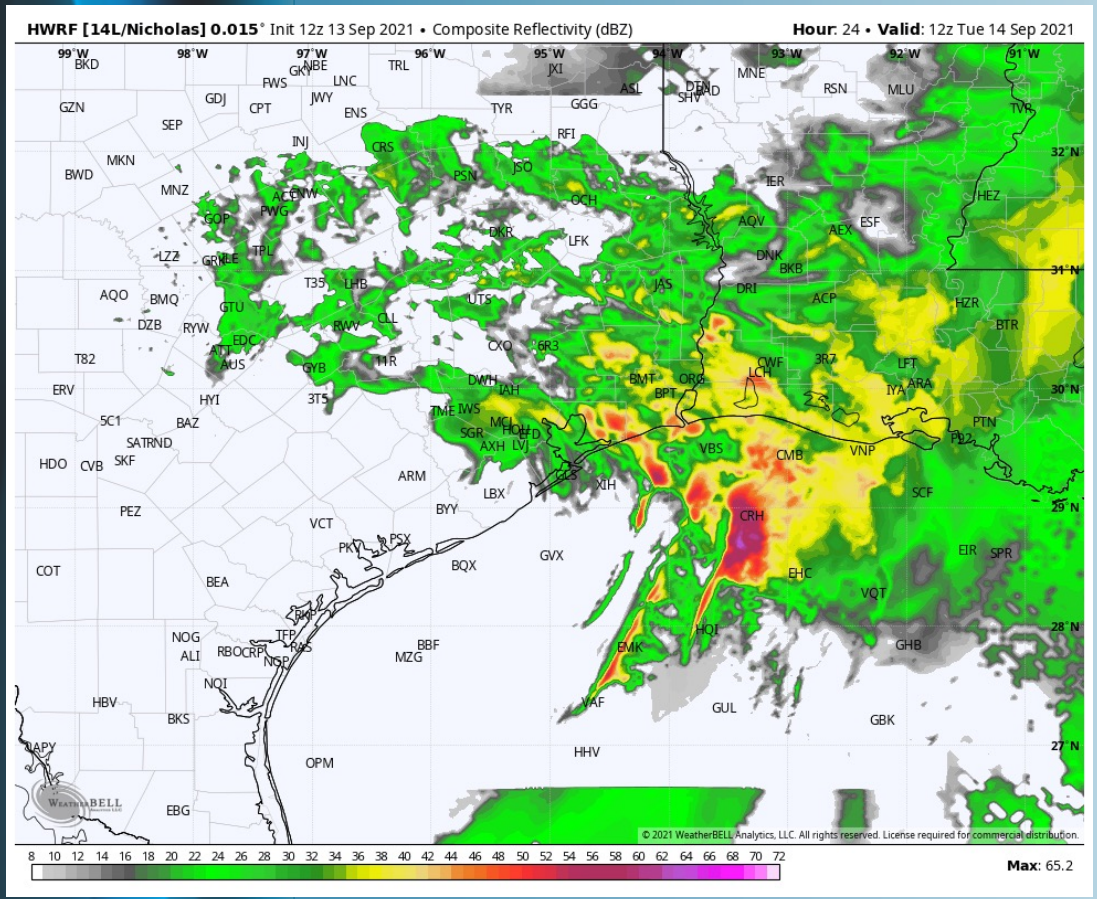
## Short-Term Forecast Discussion

- Similar as into tonight, heavy / gusty showers and thunderstorms look to continue through Tuesday daybreak. Since things have sped up in the short-term, Tuesday late morning to afternoon looks to see lessening chances of precipitation.
- Sustained winds 35-45 MPH for most of Tuesday daytime (~12AM-7AM), gusts 45-55 MPH are possible. 20-30 MPH sustained winds expected 8AM-mid afternoon. Getting into evening/nighttime 15-25 MPH sustained with gusts 25-35 MPH possible.
- At this moment, 6'+ is favored for the boarding station (like shown in bottom right) to continue through ~9PM.
- *No fog anticipated for Tuesday, but reduced visibility will be possible in heavier showers.*

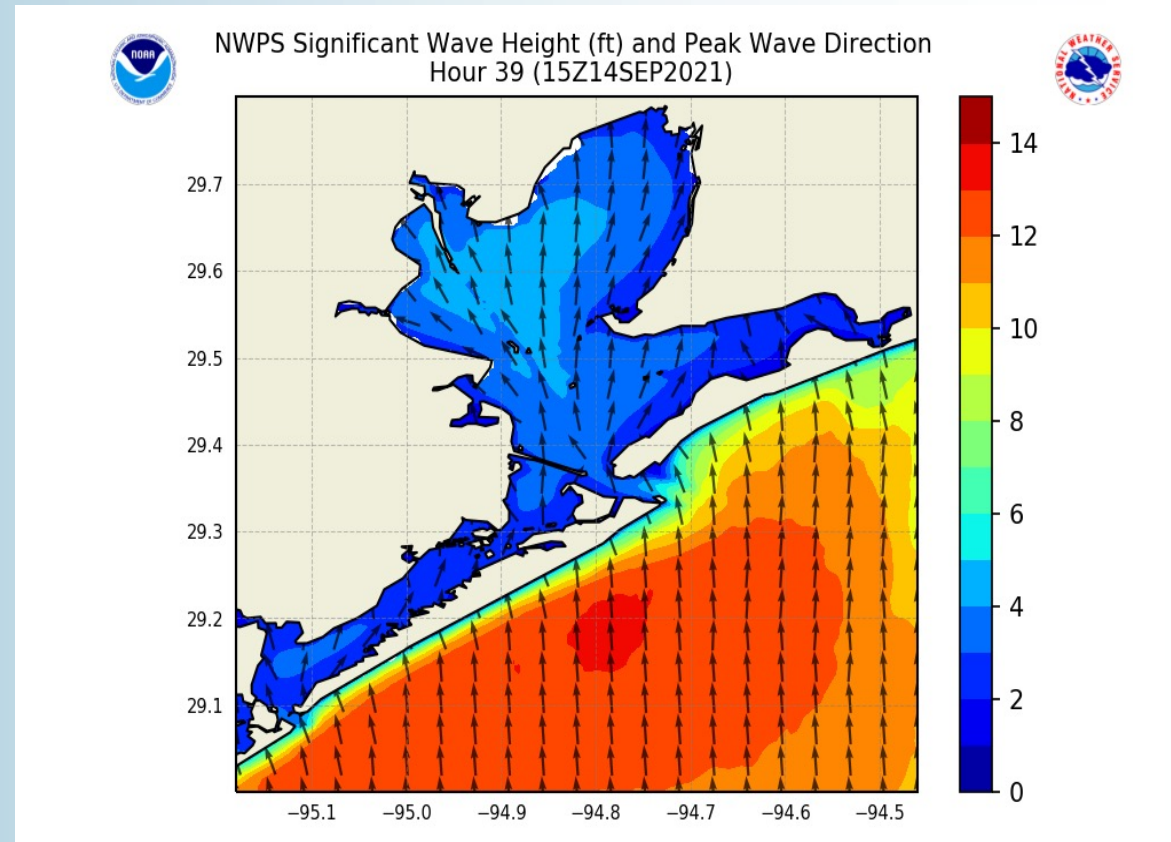
## Sustained Winds (10 AM CT)



## Simulated Radar Snapshot (7 AM CT)



## Wave Heights: 10 AM CT

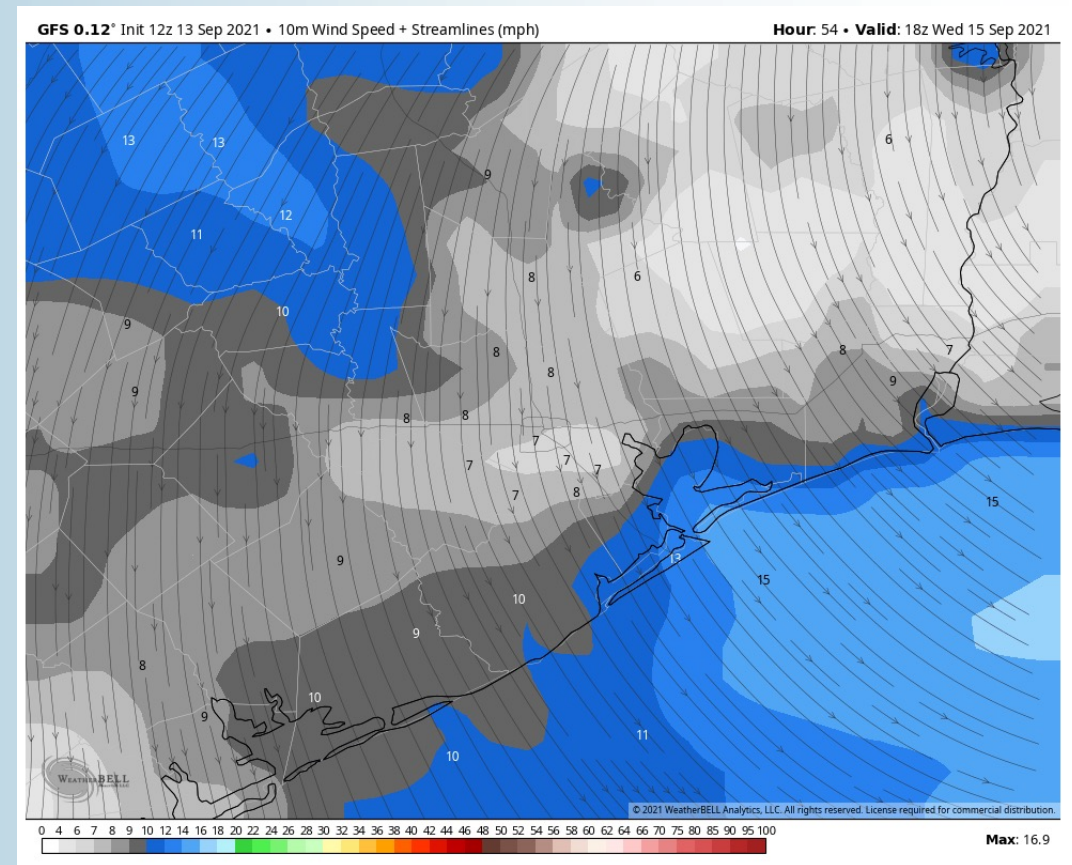




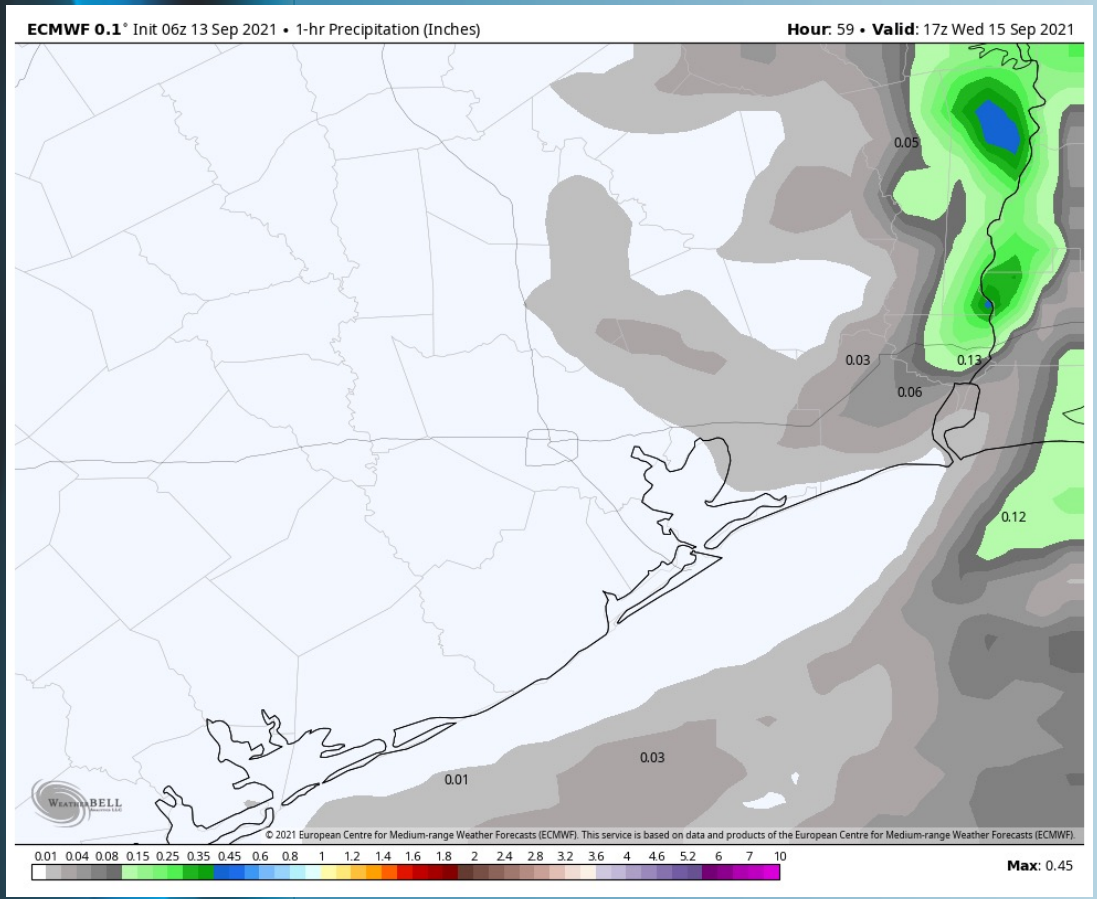
## Short-Term Forecast Discussion

- Overall, Wednesday is expected to trend towards a drier day across the HOU metro area towards the Boarding Station.
- Winds will remain elevated at this time, expecting to be sustained at West to Northwest at 10-15 MPH, gusting at times up to 20-25 MPH (especially through early afternoon - tapering off deeper into the PM hours we go).
- High temperatures look to return back into the mid-to-upper 80s on Wednesday, especially further in-land towards HOU.
- ***No fog is anticipated for WED.***

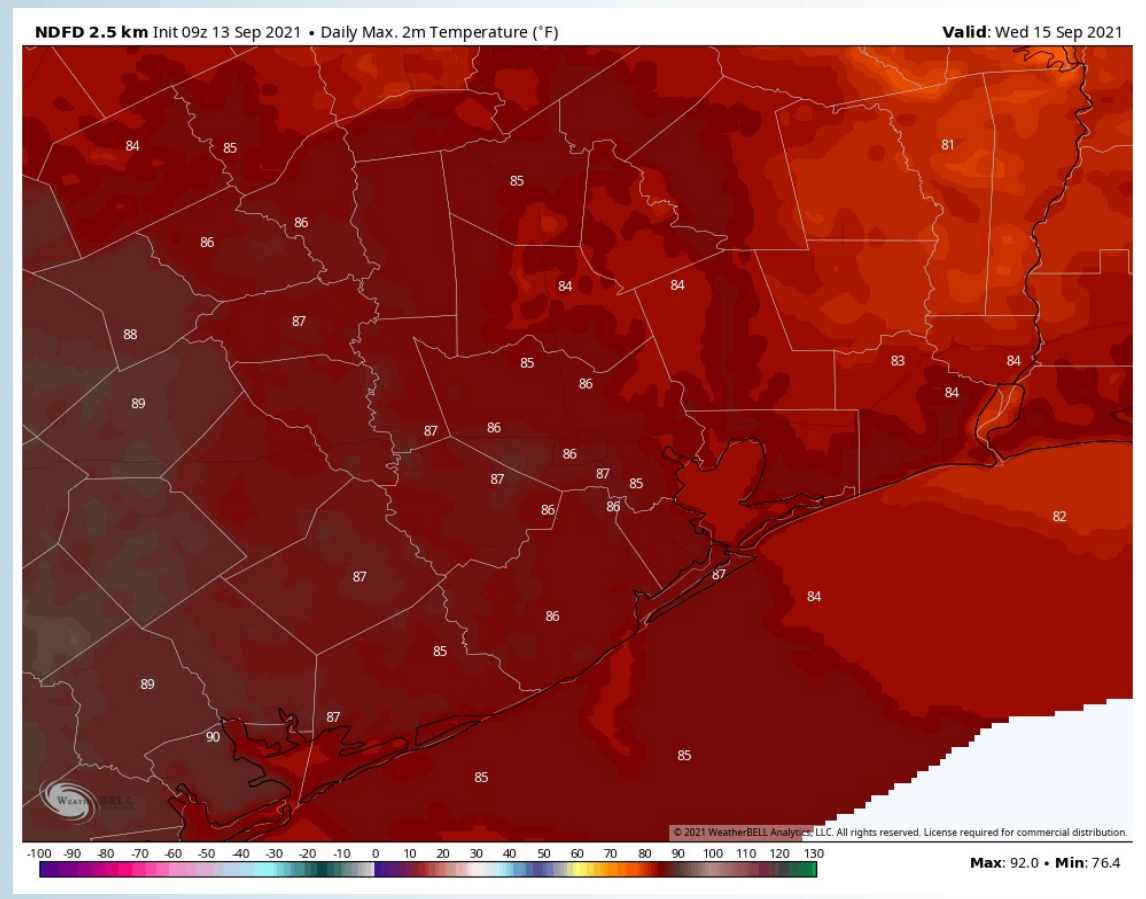
## Sustained Winds (2 PM CT)



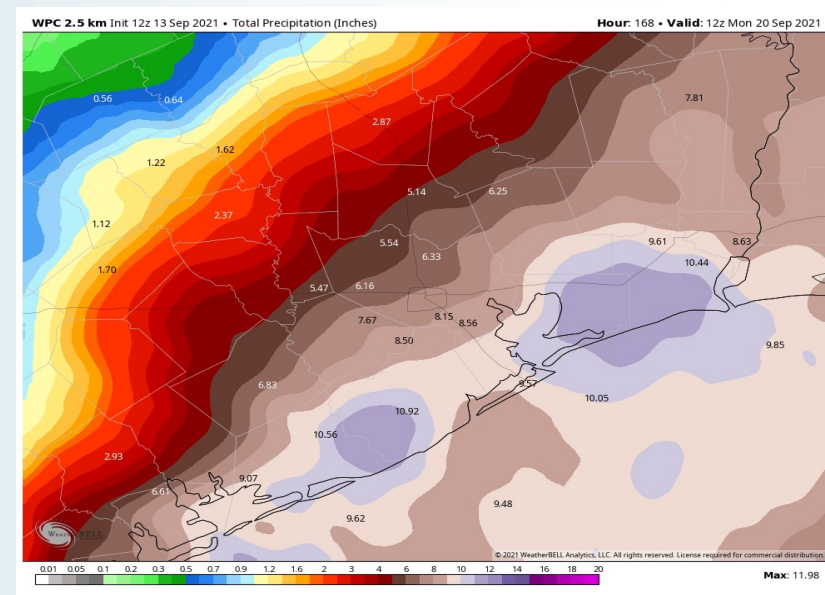
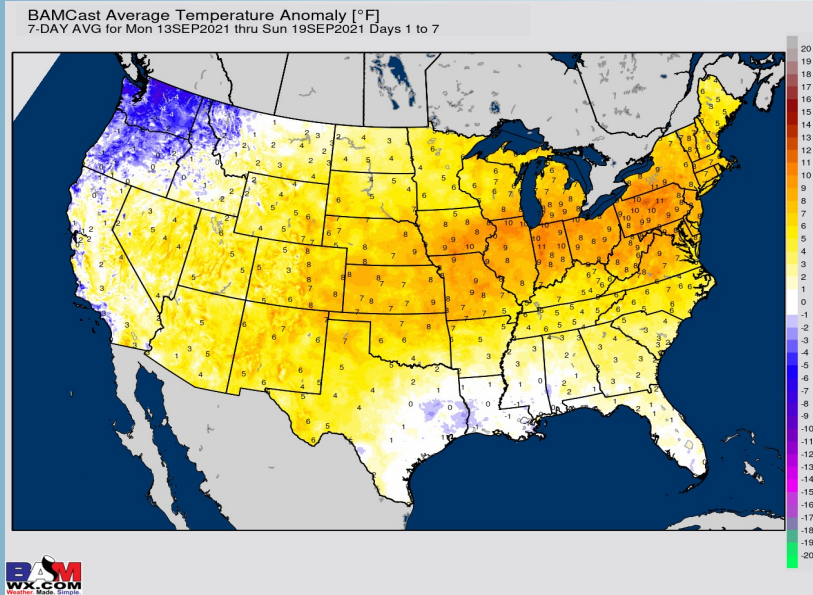
## Simulated Radar Snapshot (12 PM CT)



## High Temperatures Wednesday



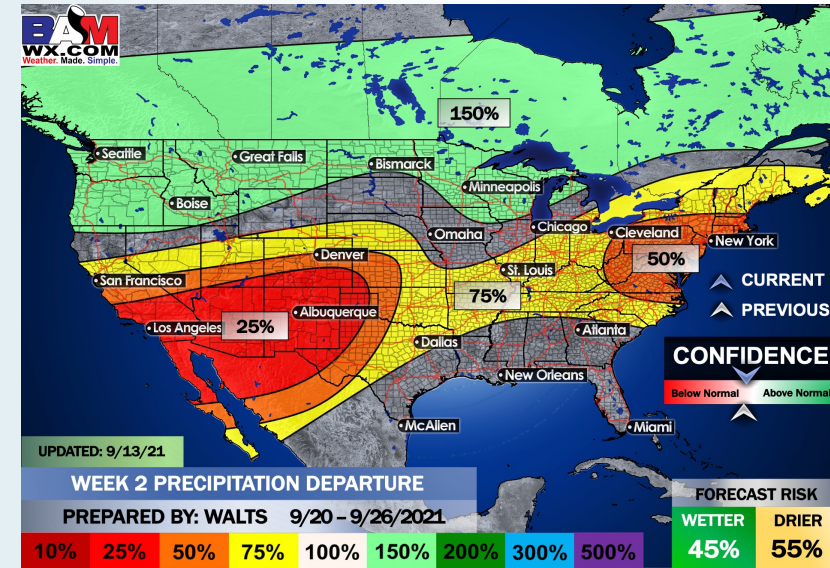
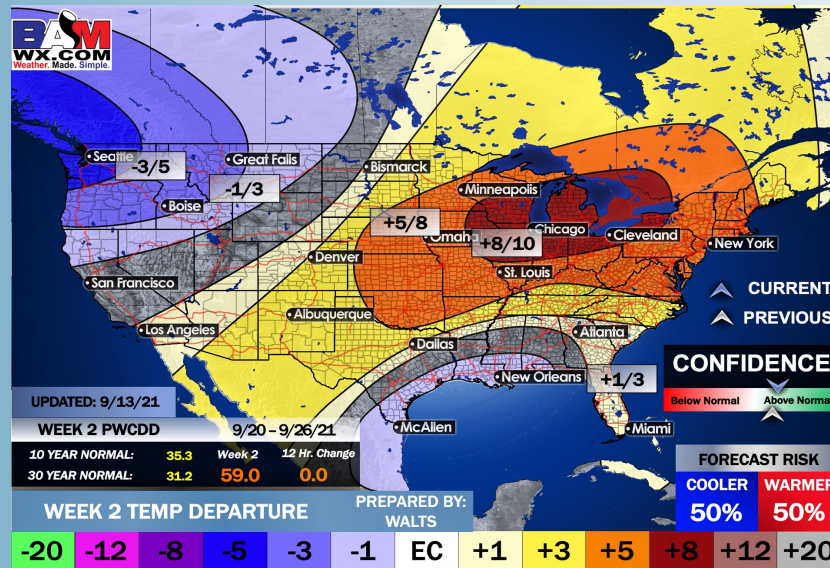
## Week 1 Forecast



## Long-Range Forecast Discussion

- The focus in the week 1 period is going to be the heavy rainfall potential, especially today through Tuesday. This is associated with the current tropical disturbance. Model data continues to be very aggressive with rainfall amounts of 5"+ possible (around 10" will be possible pending the exact evolution of the system as it moves in-land. Multiple bouts of heavy rain will be possible, especially in the afternoon / evening hours. The added clouds/precipitation will lead to normal to slightly below normal temps. Please refer to the slides above for more specifics.
- The week 2 timeframe is expected to have above average precipitation with near-normal temps. The pattern continues to favor tropical moisture into the area, especially early in the period as the aforementioned system exits. Not eyeing a specific threat for a tropical storm or hurricane at this distance, but will need to continue to monitor.
- Right now, we have the risk of above normal temps and normal precipitation for the weeks 3/4 period. We will continue to monitor for tropical disturbances during this time. All it takes is for one system for above normal rainfall. However, avoiding tropical systems may introduce drier risks. The forecast may ultimately be "boom or bust" in regards to precipitation potential.

## Week 2 Forecast



## Weeks 3/4 Forecast

