



Indiana State Fair

2PM Weather Forecast

Friday, August 20, 2021



Hour by Hour Forecast:

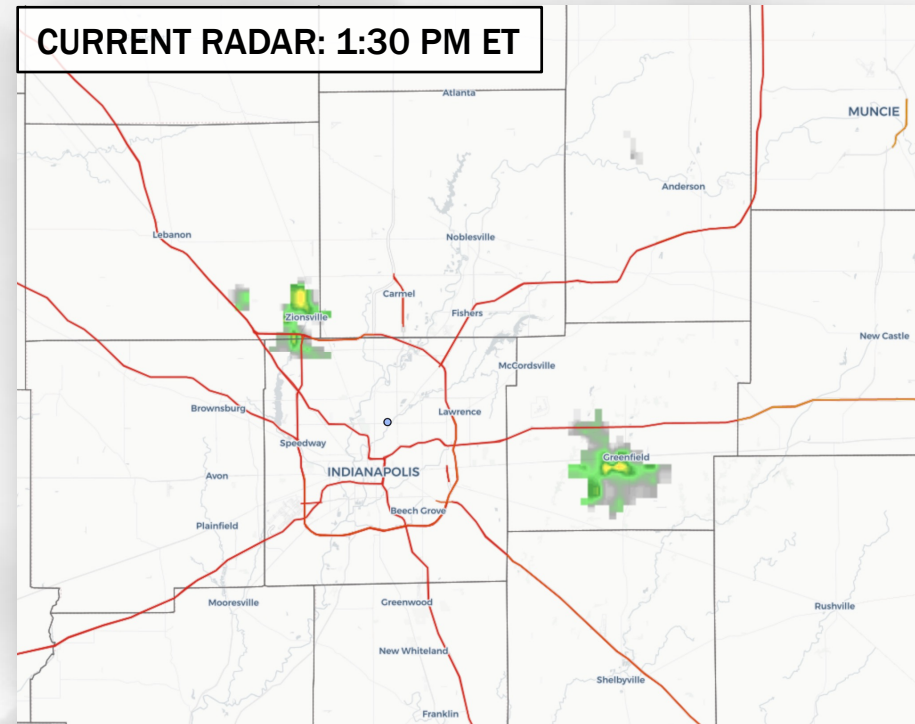
Time	Temp	Forecast Icon	Precip %	Lightning Prob %	Rain Hourly Range	Rain Accum Range	Feels Like	Wind
08-20-2021 Fri 2pm	86°		20%	10%	0"-0.05" Mean: 0.02"	0"-0.46" Mean: 0.03"	90°	SSE 5mph G: 7mph
08-20-2021 Fri 3pm	87°		20%	10%	0"-0" Mean: 0.01"	0"-0.47" Mean: 0.04"	91°	SSE 4mph G: 7mph
08-20-2021 Fri 4pm	87°		20%	10%	0"-0" Mean: 0"	0"-0.46" Mean: 0.04"	91°	SSE 4mph G: 7mph
08-20-2021 Fri 5pm	87°		20%	10%	0"-0.04" Mean: 0"	0"-0.5" Mean: 0.04"	91°	SSE 5mph G: 6mph
08-20-2021 Fri 6pm	87°		20%	10%	0"-0" Mean: 0.02"	0"-0.51" Mean: 0.06"	90°	SSE 5mph G: 7mph
08-20-2021 Fri 7pm	86°		20%	10%	0"-0" Mean: 0"	0"-0.51" Mean: 0.06"	89°	SSE 5mph G: 6mph
08-20-2021 Fri 8pm	84°		10%	0%	0"-0" Mean: 0"	0"-0.51" Mean: 0.06"	87°	SSE 4mph G: 6mph
08-20-2021 Fri 9pm	82°		0%	0%	0"-0" Mean: 0"	0"-0.51" Mean: 0.06"	85°	SSE 3mph G: 6mph
08-20-2021 Fri 10pm	79°		0%	0%	0"-0" Mean: 0"	0"-0.51" Mean: 0.06"	82°	SE 3mph G: 6mph
08-20-2021 Fri 11pm	77°		0%	0%	0"-0" Mean: 0"	0"-0.51" Mean: 0.06"	77°	SE 4mph G: 6mph

2PM Synopsis: A few very isolated cells have started to pop across Central IN this afternoon, but are currently struggling to survive given the lack of driving winds aloft. We will continue to lean on the dry side of the forecast, but will maintain ~20% chances through the afternoon hours for a pop up. Any pop ups will be slow movers, but will hold a low end potential for lightning. Coverage is expected to remain quite isolated. Progressing into the evening, chances will fade as we lose energy for these cells and should lead to a quieter overnight. Winds will continue to remain light. Heat Index values likely top out in the lower 90s over the next few hours.

Hazardous Weather Alerts:

NONE

CURRENT RADAR: 1:30 PM ET





Indiana State Fair

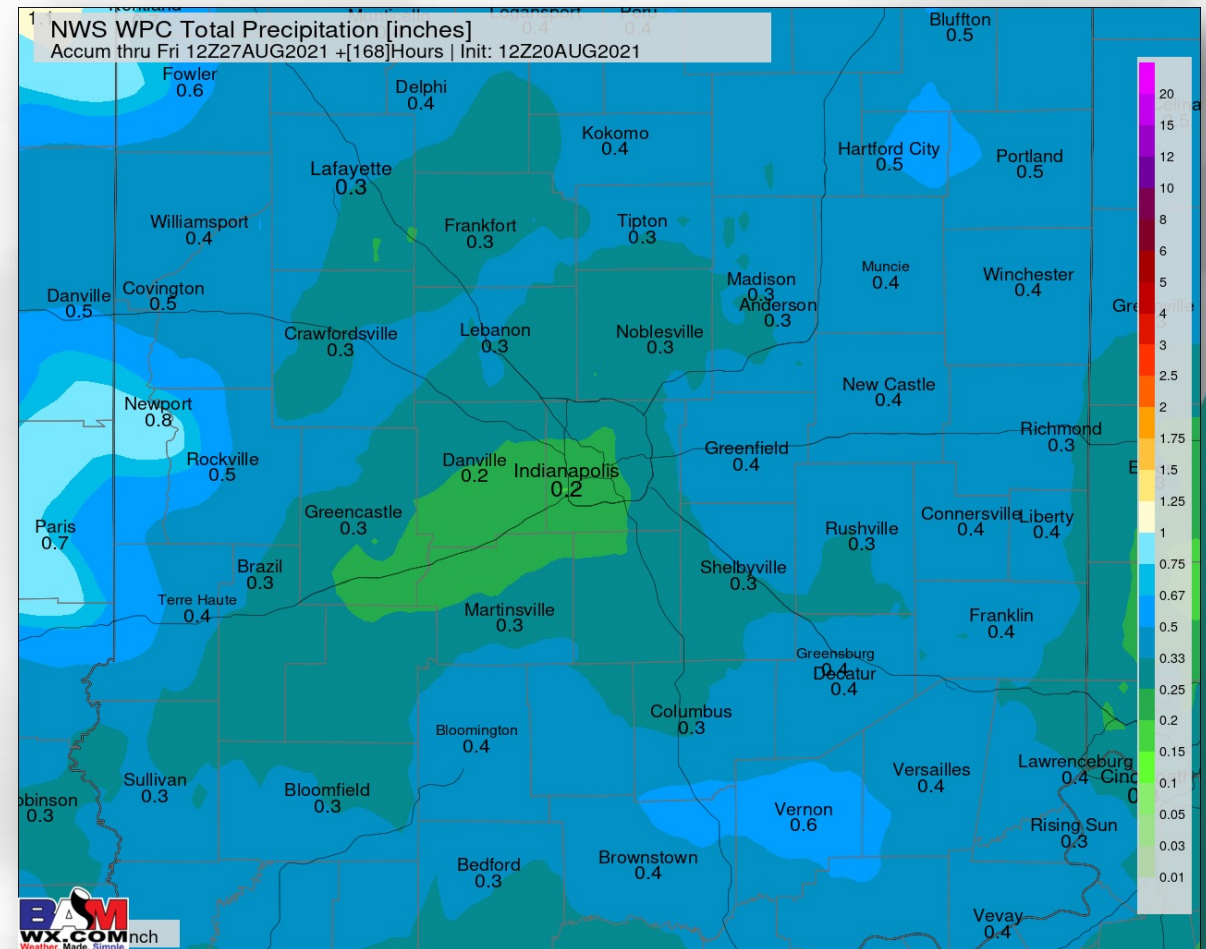
2PM Weather Forecast

Friday, August 20, 2021



5 Day Forecast Discussion: A few isolated showers/storms will be possible today (overall best chances coming out through ~sundown) with a slightly better shot getting into the late afternoon hours of tomorrow. We continue to anticipate the bulk of activity on Sunday to remain South/ East of the Indy Metro area with Monday looking dry as well. Better chances look to come back into the picture getting into Tuesday. Temperatures in the upper 80's to lower 90's F will be possible this weekend with Heat Index Values in the lower 90's F. Heat Index Values into the mid 90s look possible starting Monday.

7-Day Rain Map:



Date	Temp	Forecast Icon	Precip %	Rain	Relative Humidity	Wind
08-21-2021 Sat	70° 89°		0% am 20% pm	0" -0.25"	52%	S 5mph G: 8mph
08-22-2021 Sun	72° 89°		0% am 0% pm	0" -0"	61%	W 4mph G: 6mph
08-23-2021 Mon	68° 92°		0% am 0% pm	0" -0"	53%	W 4mph G: 7mph
08-24-2021 Tue	73° 94°		13% am 28% pm	0" -0.09"	57%	SW 4mph G: 7mph
08-25-2021 Wed	74° 92°		17% am 43% pm	0.02" -0.27"	57%	SW 5mph G: 9mph



Indiana State Fair

2PM Weather Forecast

Friday, August 20, 2021



Long Range Forecast Discussion & Scenarios: Rain chances the next few days look to be minimal but we will need to watch for something isolated today as well as scattered PM chances tomorrow. Continuing to favor drier conditions for Sunday and Monday. Some hit and miss opportunities will be possible mid next week (looking at chances TUE – WED), but they don't look overly impressive and are not expected to be washouts at this distance. Temperatures start to pick up, especially into Monday and beyond of the week ahead. Will need to keep an eye on Tuesday as there is some model data (see below) which have temperatures getting into the mid 90's F. Winds overall do not look to be much of an issue as well the next few days.

TMax☀️↑	Most Likely	75% Chance	25% Chance	10% Chance
Fri 8/20	88°F	88°F	90°F	90°F
Sat 8/21	89°F	88°F	91°F	92°F
Sun 8/22	88°F	87°F	90°F	91°F
Mon 8/23	92°F	90°F	94°F	95°F
Tue 8/24	93°F	92°F	96°F	98°F
Wed 8/25	93°F	91°F	96°F	97°F
Thu 8/26	90°F	86°F	93°F	95°F
Fri 8/27	86°F	82°F	91°F	93°F
Sat 8/28	84°F	80°F	89°F	93°F
Sun 8/29	85°F	81°F	89°F	92°F

Rain💧	Most Likely	75% Chance	25% Chance	10% Chance
Fri 8/20	0"	0"	0"	0.01"
Sat 8/21	0"	0"	0.09"	0.23"
Sun 8/22	0"	0"	0"	0.03"
Mon 8/23	0"	0"	0"	0.04"
Tue 8/24	0"	0"	0.06"	0.48"
Wed 8/25	0.02"	0"	0.15"	0.54"
Thu 8/26	0"	0"	0.19"	0.76"
Fri 8/27	0"	0"	0"	0.27"
Sat 8/28	0"	0"	0"	0.17"
Sun 8/29	0"	0"	0"	0.32"