



Indiana State Fair

10PM Weather Forecast

Monday, August 9, 2021

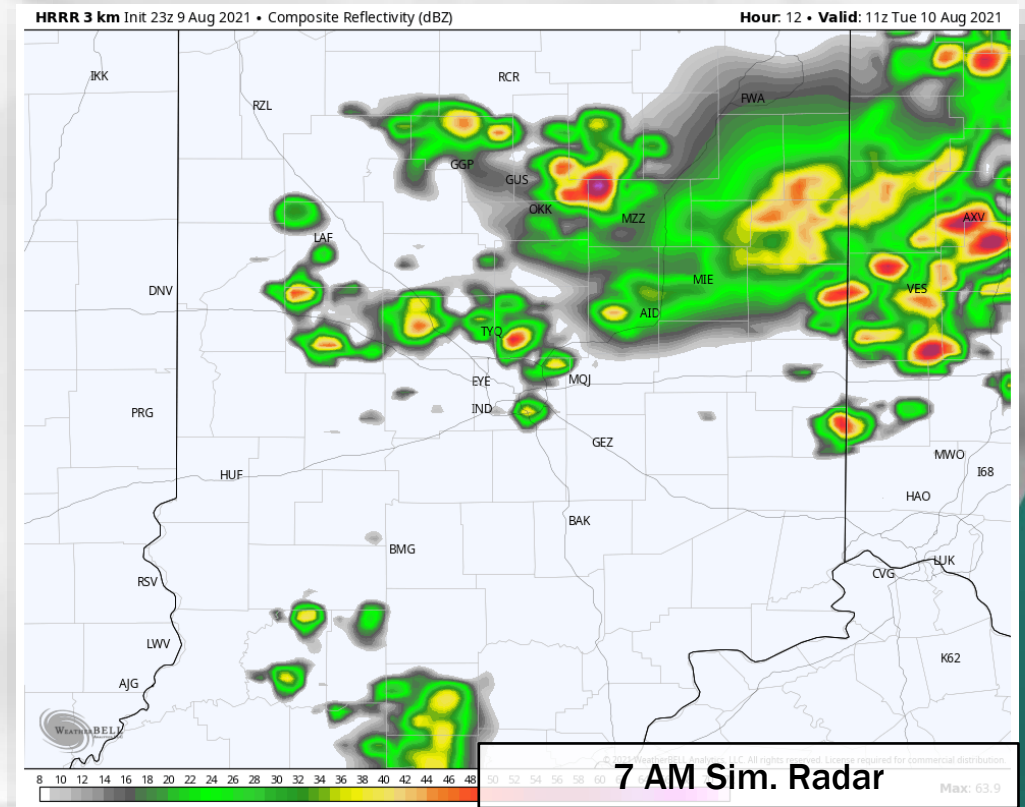


Hour by Hour Forecast:

| Time | Temp | Forecast Icon | Precip % | Lightning Prob % | Rain Hourly Range | Rain Accum Range | Feels Like | Wind |
|---------------------|------|---------------|----------|------------------|-------------------------|-------------------------|------------|----------------------|
| 08-09-2021 Mon 10pm | 78° | | 0% | 0% | 0"-0" Mean: 0" | 0"-0" Mean: 0" | 81° | S 8mph G: 14mph |
| 08-09-2021 Mon 11pm | 78° | | 0% | 0% | 0"-0" Mean: 0" | 0"-0" Mean: 0" | 77° | S 8mph G: 14mph |
| 08-10-2021 Tue 12am | 77° | | 0% | 0% | 0"-0" Mean: 0" | 0"-0" Mean: 0" | 77° | S 8mph G: 14mph |
| 08-10-2021 Tue 1am | 76° | | 0% | 0% | 0"-0" Mean: 0" | 0"-0" Mean: 0" | 76° | SSW 8mph G: 14mph |
| 08-10-2021 Tue 2am | 76° | | 10% | 0% | 0"-0" Mean: 0" | 0"-0.01" Mean: 0" | 76° | SSW 8mph G: 14mph |
| 08-10-2021 Tue 3am | 76° | | 10% | 0% | 0"-0.13" Mean: 0" | 0"-0.13" Mean: 0" | 76° | SSW 7mph G: 14mph |
| 08-10-2021 Tue 4am | 75° | | 50% | 0% | 0"-0" Mean: 0.02" | 0"-0.13" Mean: 0.02" | 75° | SSW 7mph G: 14mph |
| 08-10-2021 Tue 5am | 75° | | 0% | 0% | 0"-0" Mean: 0" | 0"-0.13" Mean: 0.02" | 75° | SSW 8mph G: 14mph |
| 08-10-2021 Tue 6am | 74° | | 12% | 0% | 0"-0.17" Mean: 0.01" | 0"-0.3" Mean: 0.03" | 74° | SSW 7mph G: 13mph |
| 08-10-2021 Tue 7am | 73° | | 42% | 0% | 0"-0" Mean: 0.03" | 0"-0.3" Mean: 0.06" | 74° | SW 7mph G: 14mph |

10PM Synopsis: We anticipate early overnight conditions to remain overall dry with the potential for some scattered chances of rainfall from 3 – 8 AM from a weakening storm cluster moving south from NW IN. If a storm can develop overhead in this period, some locally gusty winds and heavy downpours can't be ruled out.

Hazardous Weather Alerts: None





Indiana State Fair

10PM Weather Forecast

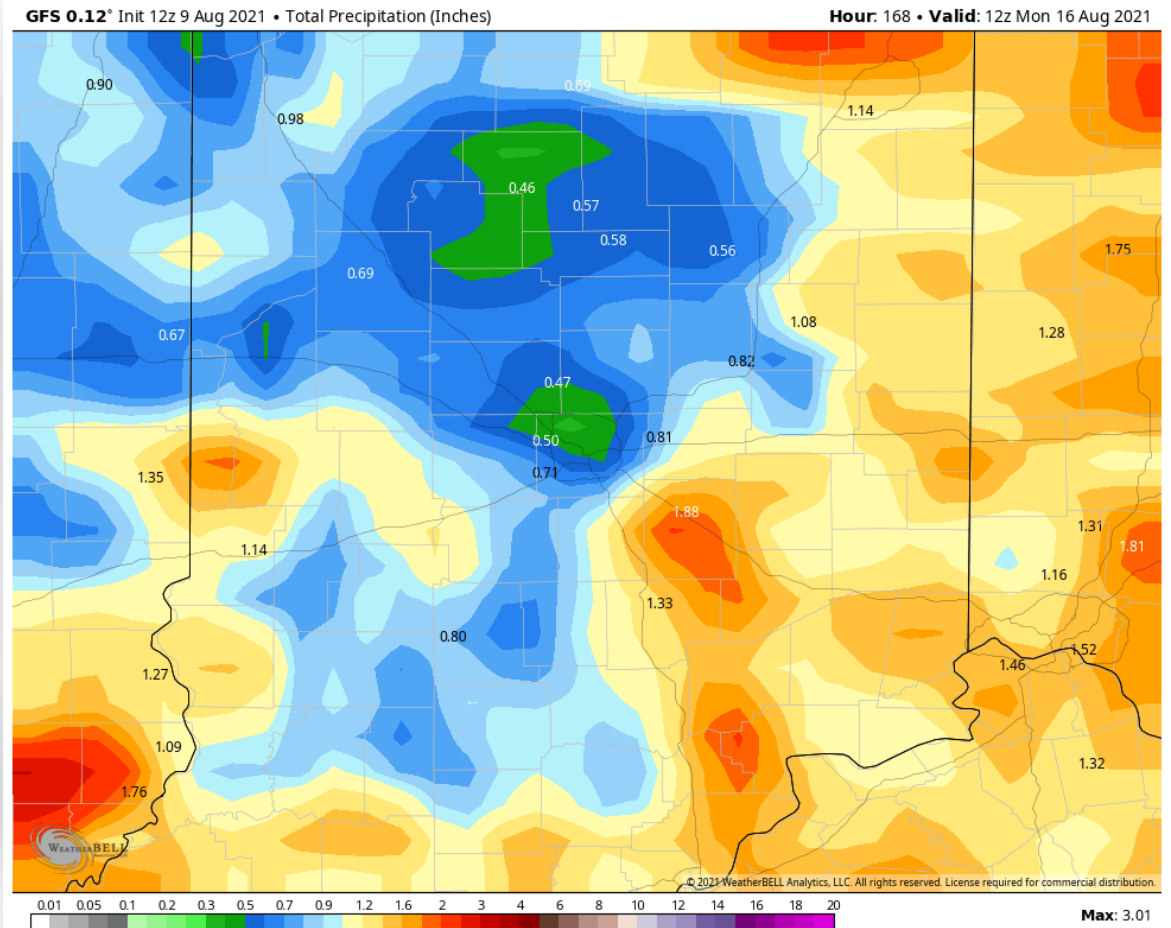
Monday, August 9, 2021



5 Day Forecast Discussion: We continue to monitor the risk for a southward-diving storm cluster across northern/northwestern IN heading towards sunset through pre-dawn Tuesday. At this time confidence is on the lower side of things that this cluster makes it in a stronger-storm fashion to Indy, but in a more weakened state if it does so. The main risk with this would be some locally stronger wind gusts – better threat remains just to the north. We'll need to watch for another cluster late tomorrow, but again better chances remain north of Indy. Outside of this, near-daily rain chances will be possible through Friday this week. We may need to watch for an increased coverage of activity Tuesday night – Wed. Morning but data remains variable. The best shot likely comes with a cold front passage later Friday afternoon to evening at this distance, in which we could also be dealing with strong to severe storm potential here as well (this will need to be fine-tuned as we get closer this week).

7-Day Rain Map:

| Date | Temp | Forecast Icon | Precip % | Rain | Relative Humidity | Wind |
|----------------|---------|---------------|------------------|-------------|-------------------|-----------------------|
| 08-10-2021 Tue | 73° 88° | | 50% am 28% pm | 0.15"-0.75" | 69% | SW 8mph G: 13mph |
| 08-11-2021 Wed | 74° 92° | | 21% am 25% pm | 0"-0.12" | 67% | SSW 10mph G: 17mph |
| 08-12-2021 Thu | 77° 93° | | 15% am 37% pm | 0.02"-0.24" | 60% | WSW 8mph G: 14mph |
| 08-13-2021 Fri | 74° 90° | | 26% am 53% pm | 0.06"-0.36" | 65% | WSW 6mph G: 12mph |
| 08-14-2021 Sat | 65° 83° | | 0% am 0% pm | 0"-0" | 54% | NE 5mph G: 10mph |





Indiana State Fair

10PM Weather Forecast

Monday, August 9, 2021



Long Range Forecast Discussion & Scenarios: This week the long-advertised heat and humidity will be present along with a daily storm threat. The high end and extreme outcomes on rainfall tell us how much rain we **could** get if caught under a heavier storm cell. Right now we anticipate a cold front passage Friday to bring a storm threat but then bring drier and a bit cooler and less humid weather for next weekend.

| TMax | Low End | Most Likely | High End | Extreme |
|----------|---------|-------------|----------|---------|
| Tue 8/10 | 90°F | 92°F | 94°F | 94°F |
| Wed 8/11 | 92°F | 94°F | 95°F | 96°F |
| Thu 8/12 | 92°F | 94°F | 96°F | 96°F |
| Fri 8/13 | 88°F | 91°F | 94°F | 95°F |
| Sat 8/14 | 83°F | 86°F | 89°F | 91°F |
| Sun 8/15 | 84°F | 86°F | 88°F | 90°F |
| Mon 8/16 | 85°F | 87°F | 89°F | 91°F |
| Tue 8/17 | 87°F | 89°F | 90°F | 91°F |
| Wed 8/18 | 86°F | 89°F | 91°F | 92°F |
| Thu 8/19 | 87°F | 89°F | 91°F | 94°F |

| Rain | Low End | Most Likely | High End | Extreme |
|----------|---------|-------------|----------|---------|
| Tue 8/10 | 0" | 0.1" | 0.37" | 0.59" |
| Wed 8/11 | 0" | 0.12" | 0.5" | 0.76" |
| Thu 8/12 | 0.02" | 0.24" | 0.67" | 0.99" |
| Fri 8/13 | 0.06" | 0.36" | 0.78" | 1.11" |
| Sat 8/14 | 0" | 0" | 0.17" | 0.49" |
| Sun 8/15 | 0" | 0" | 0" | 0.2" |
| Mon 8/16 | 0" | 0" | 0.06" | 0.26" |
| Tue 8/17 | 0" | 0.03" | 0.3" | 0.63" |
| Wed 8/18 | 0" | 0.04" | 0.37" | 0.76" |
| Thu 8/19 | 0" | 0.05" | 0.45" | 0.8" |