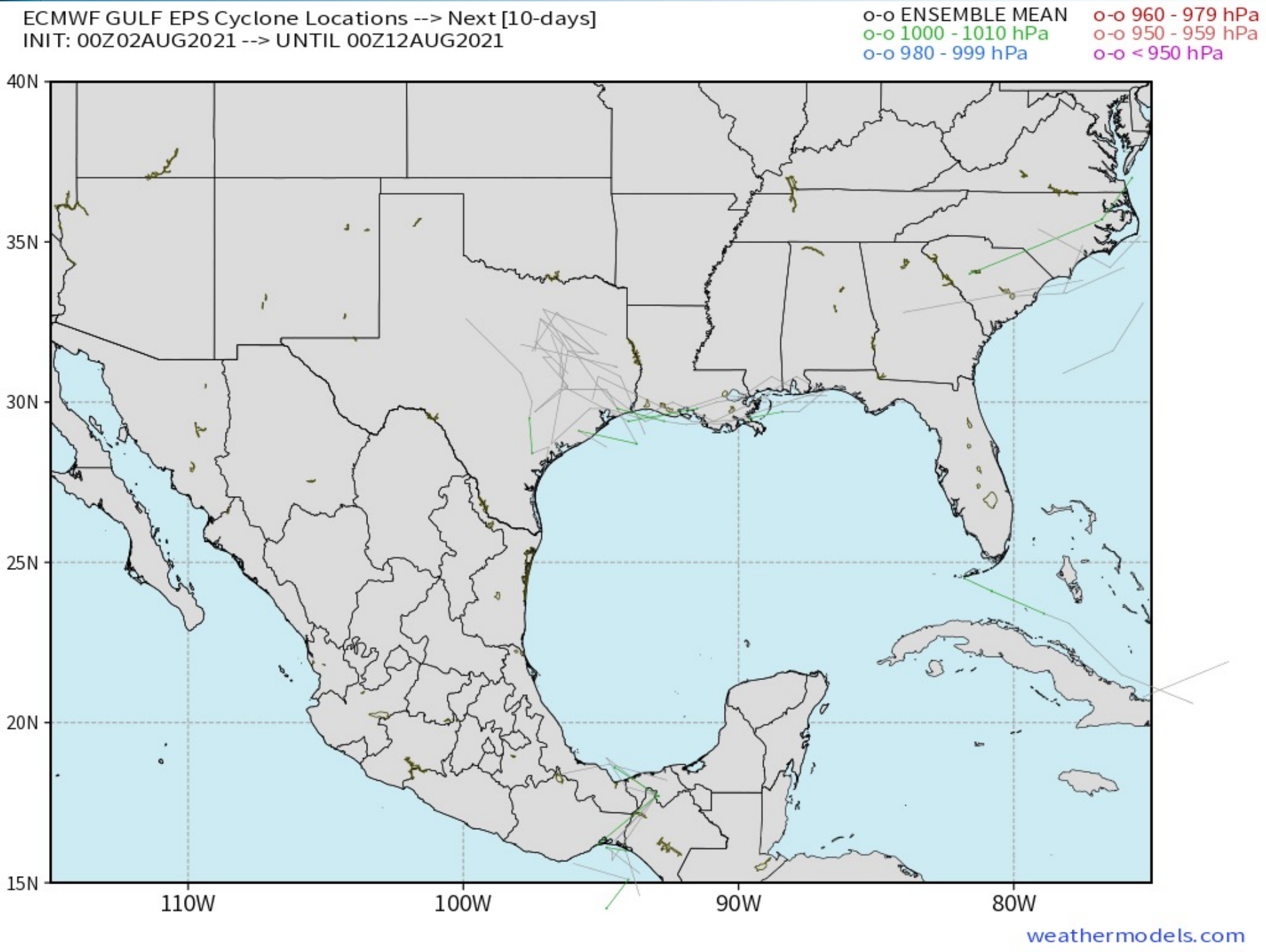


Updated: 1:20 PM CT, Monday, August 2, 2021

- **As always, please do not hesitate to reach out to us with any forecast questions via the chat option on the Weather Porthole or our on call number, **(317)-560-8122** press 1 for forecast questions.**

Tropical Update:

European Ensemble Tracks



Tropical activity in the Gulf of Mexico is not anticipated in the next 7-10 days.



Visibility Report

Monday, August 2, 2021

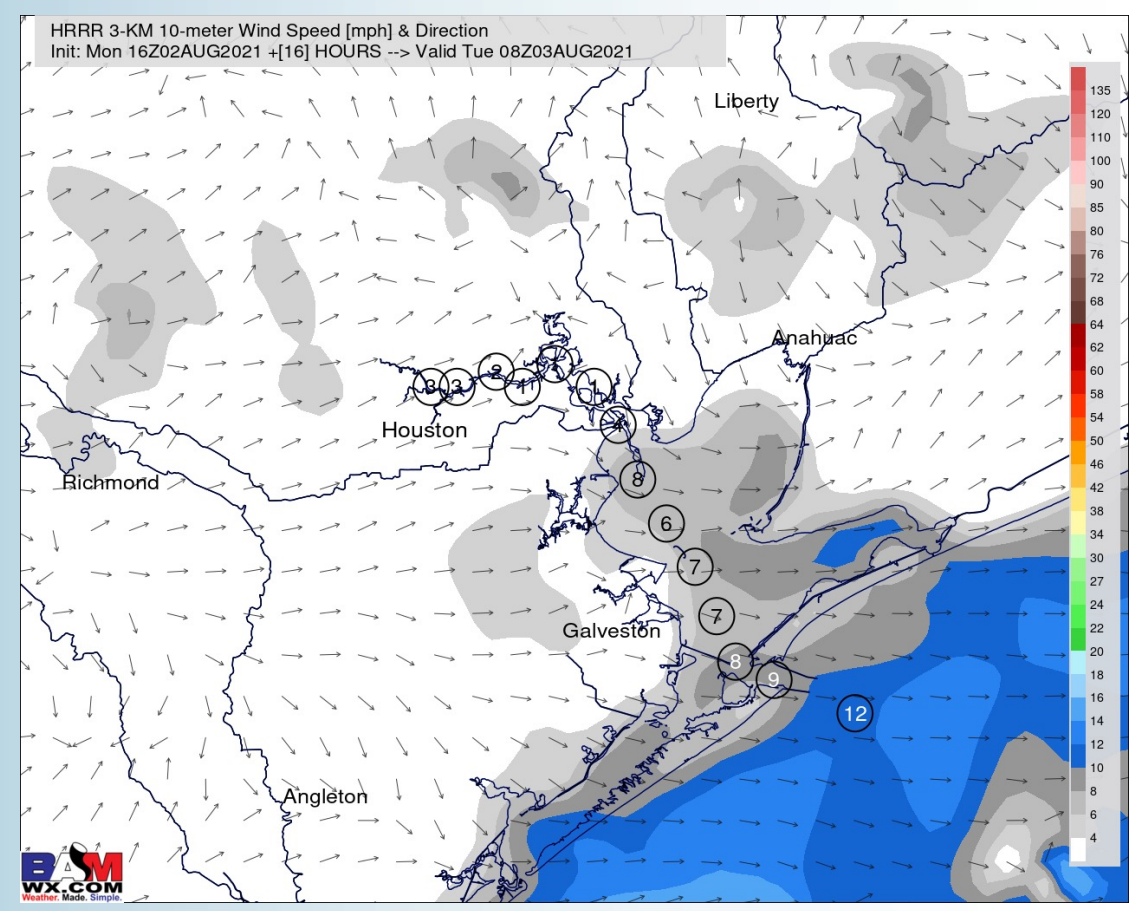
HOURLY VISIBILITY BREAKDOWN (in miles)

Time	08-02-2021 Mon 12pm	08-02-2021 Mon 1pm	08-02-2021 Mon 2pm	08-02-2021 Mon 3pm	08-02-2021 Mon 4pm	08-02-2021 Mon 5pm	08-02-2021 Mon 6pm	08-02-2021 Mon 7pm	08-02-2021 Mon 8pm	08-02-2021 Mon 9pm	08-02-2021 Mon 10pm	08-02-2021 Mon 11pm	08-03-2021 Tue 12am	08-03-2021 Tue 1am	08-03-2021 Tue 2am	08-03-2021 Tue 3am	08-03-2021 Tue 4am	08-03-2021 Tue 5am	08-03-2021 Tue 6am	08-03-2021 Tue 7am	08-03-2021 Tue 8am	08-03-2021 Tue 9am	08-03-2021 Tue 10am	08-03-2021 Tue 11am	08-03-2021 Tue 12pm	08-03-2021 Tue 1pm	08-03-2021 Tue 2pm	08-03-2021 Tue 3pm	08-03-2021 Tue 4pm	08-03-2021 Tue 5pm	08-03-2021 Tue 6pm	08-03-2021 Tue 7pm	08-03-2021 Tue 8pm	08-03-2021 Tue 9pm	08-03-2021 Tue 10pm	08-03-2021 Tue 11pm
Houston Pilots N - 610 Bridge	10.00	10.00	2.335	2.705	1.812	3.045	5.847	4.627	1.058	5.955	6.228	4.824	4.590	8.198	7.785	5.855	7.133	7.618	5.339	5.488	5.736	7.338	6.766	8.533	10.00	10.00	7.433	6.795	9.526	7.633	7.037	7.173	2.624	5.211	7.161	8.631
Houston Pilots M - Kinder 1	10.00	10.00	4.447	1.344	2.258	3.045	5.582	4.627	1.058	1.236	9.042	4.824	4.590	7.141	7.785	5.855	7.133	7.618	5.480	5.488	5.736	7.338	6.766	8.533	9.163	10.00	7.433	6.795	9.526	9.008	7.037	5.083	2.624	8.913	7.161	8.631
Houston Pilots L - Greens Bayou	10.00	10.00	3.548	1.344	3.254	3.045	4.097	4.627	1.058	1.236	8.977	4.824	5.534	6.302	7.785	6.374	7.133	7.618	5.480	5.774	5.736	6.671	5.420	8.747	9.163	10.00	7.433	6.795	9.526	9.008	5.926	5.083	5.386	8.913	7.161	8.631
Houston Pilots K - Shell Crude	10.00	10.00	3.548	1.344	2.911	2.404	5.582	4.627	1.058	1.236	8.893	4.824	5.534	6.302	7.785	6.374	7.133	7.618	5.530	5.495	5.736	6.671	5.420	8.518	9.163	10.00	7.587	6.795	8.858	8.263	7.037	5.083	5.386	8.913	7.161	7.502
Houston Pilots J - Lynchburg Ferries	10.00	10.00	3.548	1.344	3.254	3.045	5.582	3.535	1.058	1.236	8.388	4.824	4.870	6.302	7.457	6.374	6.687	5.655	5.530	5.495	6.589	6.671	5.198	7.689	9.163	10.00	10.00	6.795	8.858	8.075	8.193	5.083	6.126	8.913	7.161	8.784
Houston Pilots I - Exxon 3	10.00	10.00	3.548	2.233	3.254	1.873	5.582	3.535	1.058	1.236	7.303	4.824	4.870	5.776	6.052	6.374	5.990	8.132	5.530	5.495	4.847	6.671	5.198	5.913	9.398	10.00	8.090	6.795	8.858	8.075	6.346	5.083	6.126	9.135	7.161	7.873
Houston Pilots H - Morgans Point	10.00	10.00	3.548	6.153	2.911	1.873	5.582	3.535	5.063	1.236	6.415	6.224	5.304	5.216	6.052	6.249	5.990	7.619	5.530	5.495	4.847	5.116	5.198	5.913	8.507	9.873	8.090	6.795	7.451	6.586	5.896	5.083	6.126	8.993	7.232	7.363
Houston Pilots G - 75/76	10.00	10.00	9.473	6.153	3.310	1.873	1.860	2.401	1.812	4.913	6.864	4.530	3.969	5.216	7.457	6.249	7.384	7.100	4.575	5.937	4.847	4.334	4.831	6.017	7.710	9.557	9.269	8.174	8.858	6.586	5.896	6.501	6.790	6.449	8.082	7.363
Houston Pilots F - 63/64	10.00	10.00	6.404	4.285	4.168	1.873	1.860	2.401	1.781	7.256	6.653	4.530	2.709	5.216	7.778	6.249	5.787	5.737	4.575	5.574	4.191	4.334	4.831	7.824	7.855	8.256	9.269	9.164	8.355	4.687	6.021	10.00	9.371	8.618	9.437	9.276
Houston Pilots E - 51/52	10.00	9.445	6.404	4.285	4.168	1.935	1.860	2.401	1.781	7.256	5.113	4.530	2.110	5.216	6.630	5.543	5.787	4.029	4.575	4.922	4.191	4.334	4.403	7.824	7.832	6.333	9.569	9.164	6.355	4.687	7.593	9.295	9.371	9.939	9.556	9.752
Houston Pilots D - 37/38	10.00	9.445	5.201	4.112	5.861	5.683	1.860	2.401	1.781	9.098	2.784	4.530	2.110	5.481	6.630	5.543	5.751	3.689	4.575	4.922	4.191	4.334	4.265	7.824	7.832	6.333	7.660	6.932	6.355	4.687	7.743	8.446	10.00	9.533	9.205	8.994
Houston Pilots C - 25/26	10.00	9.445	5.201	1.304	6.617	6.151	2.823	9.885	8.956	9.098	2.784	5.720	3.449	6.809	6.587	4.918	5.917	3.689	4.943	4.922	4.191	4.854	4.265	5.955	5.876	6.333	8.327	6.932	6.355	5.940	7.743	8.446	9.752	9.899	9.950	9.838
Houston Pilots B - 11/12	10.00	9.445	5.201	4.112	6.617	6.151	8.896	8.538	9.159	7.732	2.784	5.720	4.375	7.122	6.587	4.918	5.917	4.769	4.830	4.922	4.191	4.854	4.265	5.955	5.113	6.333	8.327	6.932	6.355	5.940	7.743	8.446	9.148	10.00	10.00	10.00
Houston Pilots A - 1 & 2 Bravo	10.00	10.00	5.201	7.133	6.631	8.672	8.896	8.386	8.868	7.506	2.784	1.360	5.988	7.495	6.597	4.771	6.811	4.769	4.740	4.180	4.620	4.873	4.265	5.955	5.113	6.558	8.661	6.337	6.939	8.458	8.496	8.239	9.148	10.00	10.00	10.00

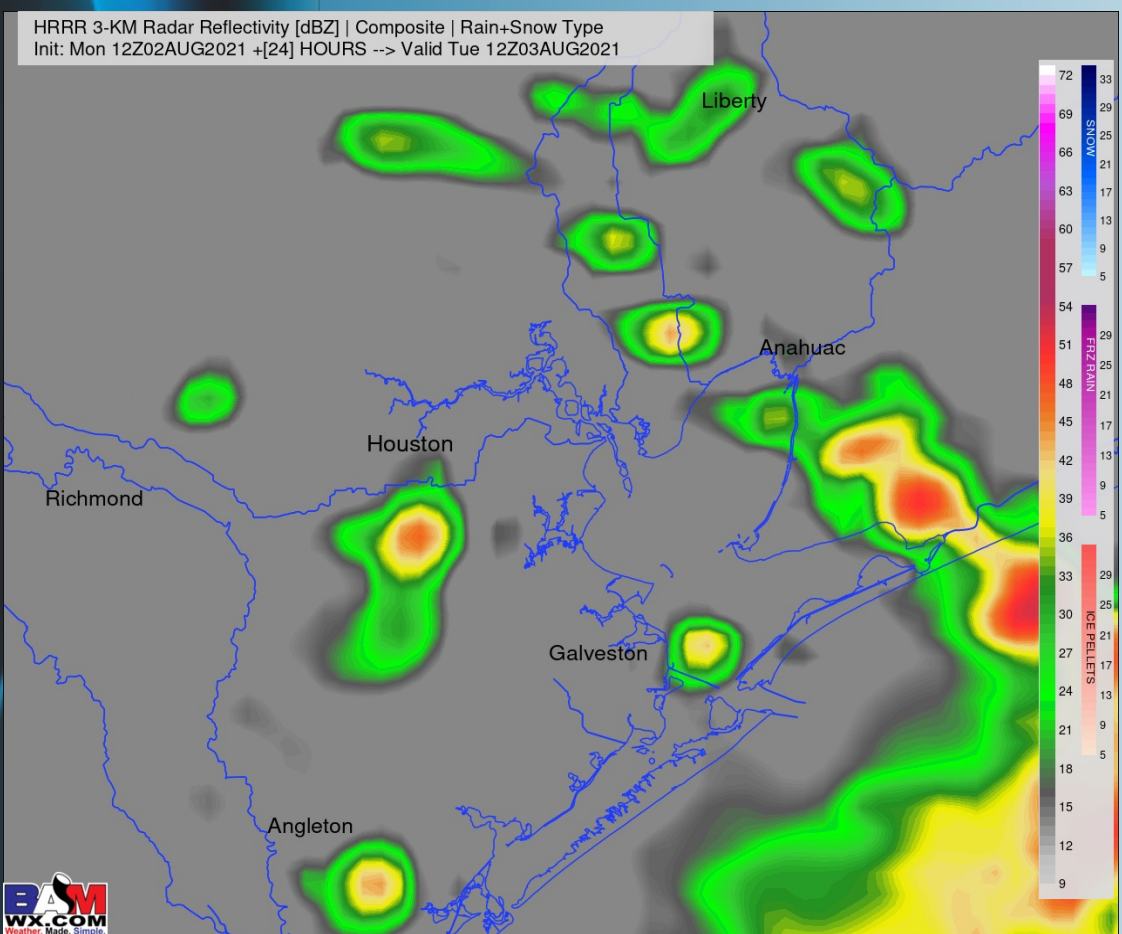
Short-Term Forecast Discussion

- **Spotty showers / storms will be possible this afternoon through early evening from the HOU metro to the Boarding Station. Better chances for higher coverage of precipitation look to reform after 9-10pmCT tonight, and especially after midnight through daybreak. Locally heavy rainfall, reduced visibility and gustier winds will be possibly in any storms overhead.**
- **Winds this afternoon into the evening will continue to be out of the SW, sustained at 8-13 MPH, gusting at times to 15-20 MPH. Winds overnight shift more out of the NW and weaken a touch to sustained at 6-12 MPH, gusting at times to 13-18 MPH. Stronger wind gusts will be possible under storms.**
- **Low temperatures tonight will linger in the lower 80s overnight tonight, dipping into the upper 70s near the HOU metro.**
 - *Currently not favoring fog for tonight.*

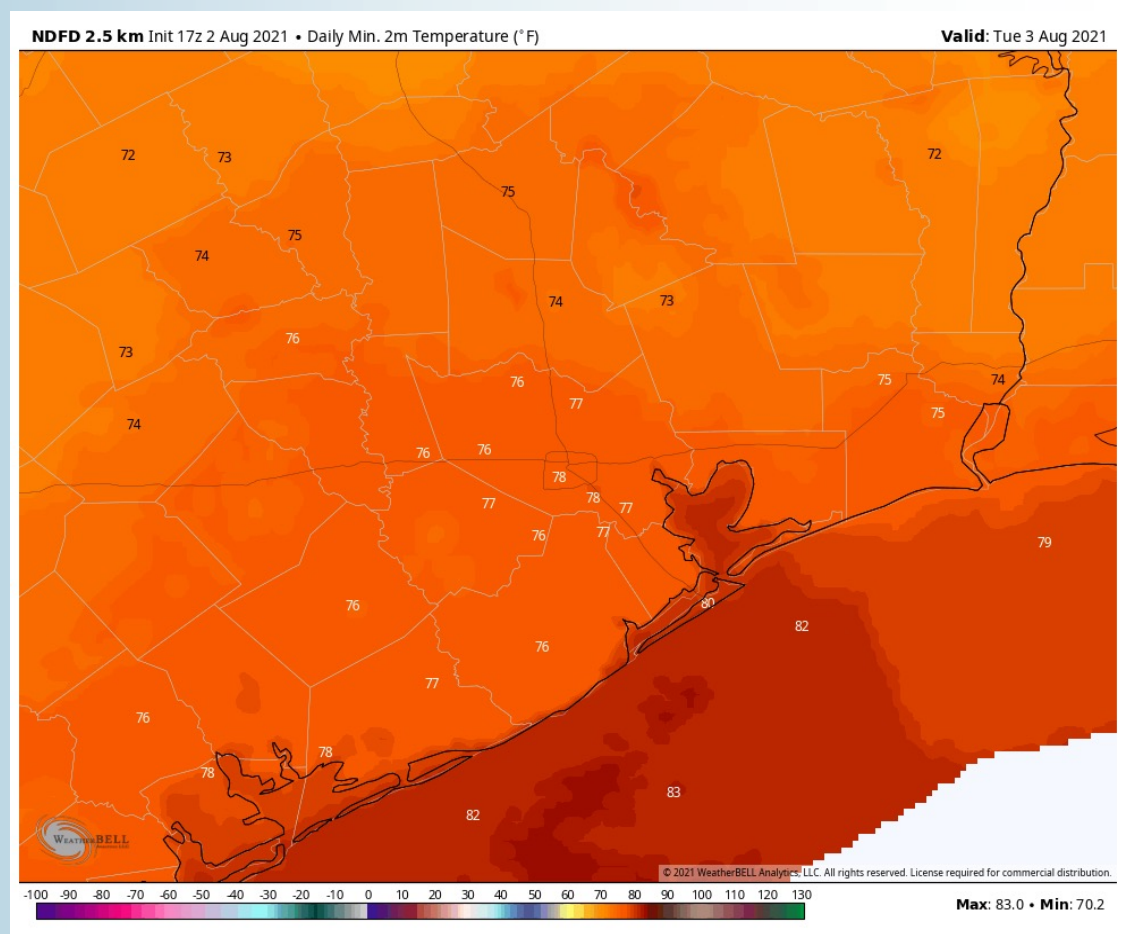
Sustained Winds (3 AM CT)



Simulated Radar Snapshot (7 AM CT)



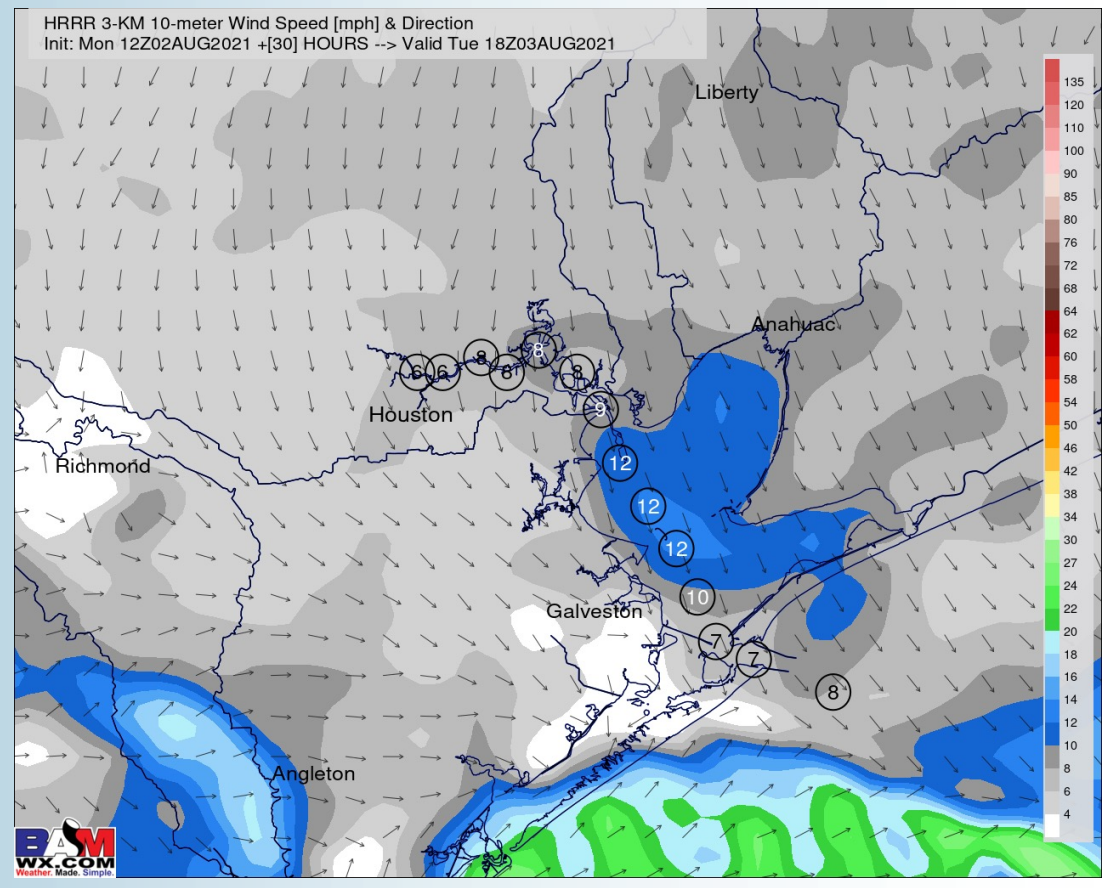
Low Temperatures Tonight



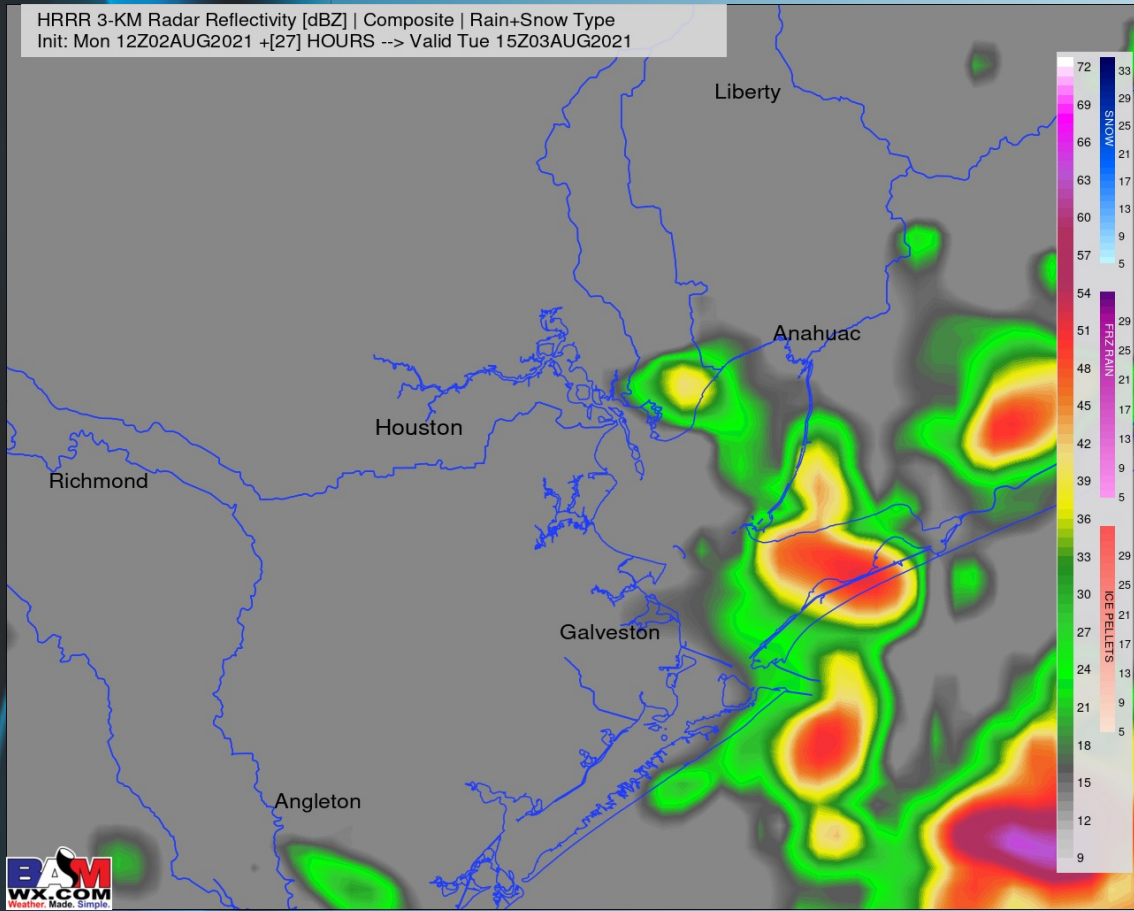
Short-Term Forecast Discussion

- Regardless of the exact timing of a frontal boundary late Monday into Tuesday morning, it is expected that scattered showers / thunderstorms will be around the area through most of TUE morning. Slightly lower coverage in showers will continue to be possible into the afternoon as well.
- Once the front works through the area in the AM hours, expecting winds to stay lighter and generally come out of the NW at 5-10 MPH, a few gusts to 15 MPH possible.
- Tuesday will see high temps into the mid 80's over open waters, warmer in-land.
- *No fog is favored for Tuesday.*

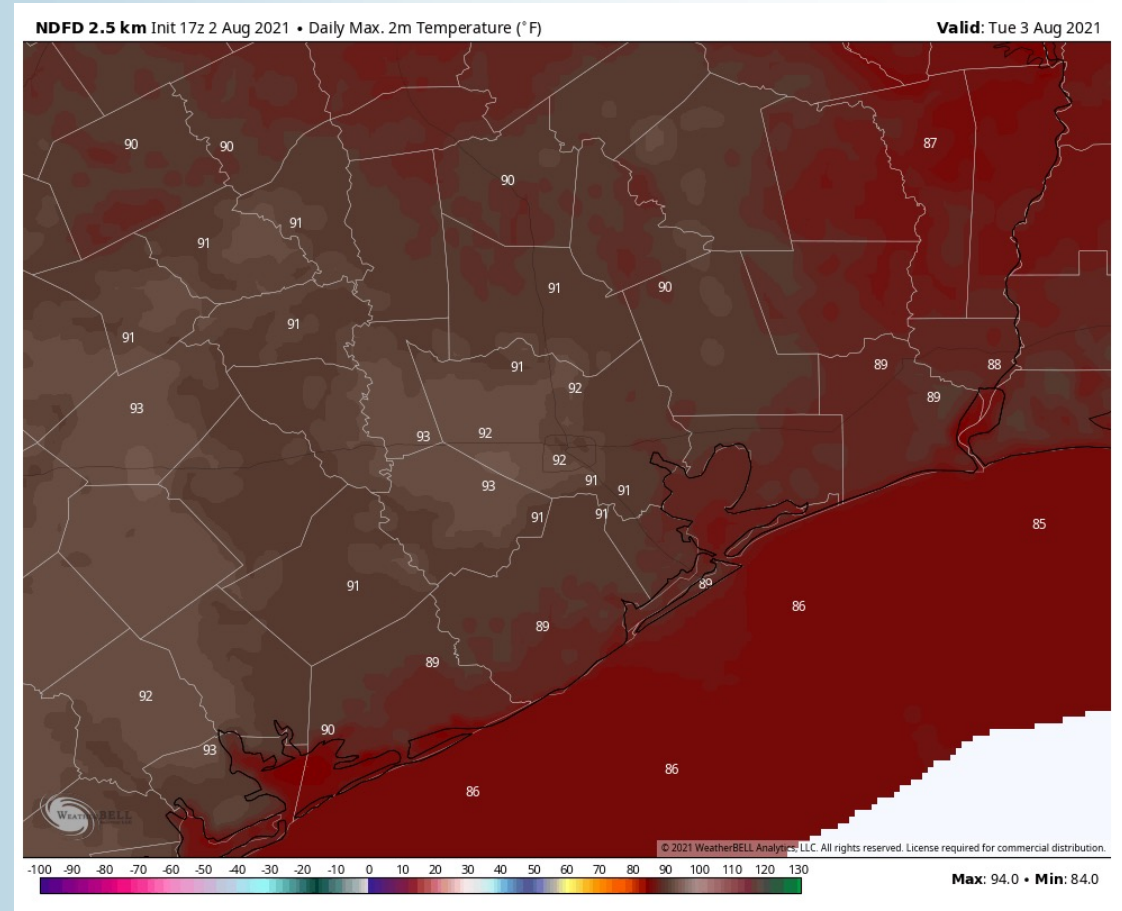
Sustained Winds (1 PM CT)



Simulated Radar Snapshot (10 AM CT)



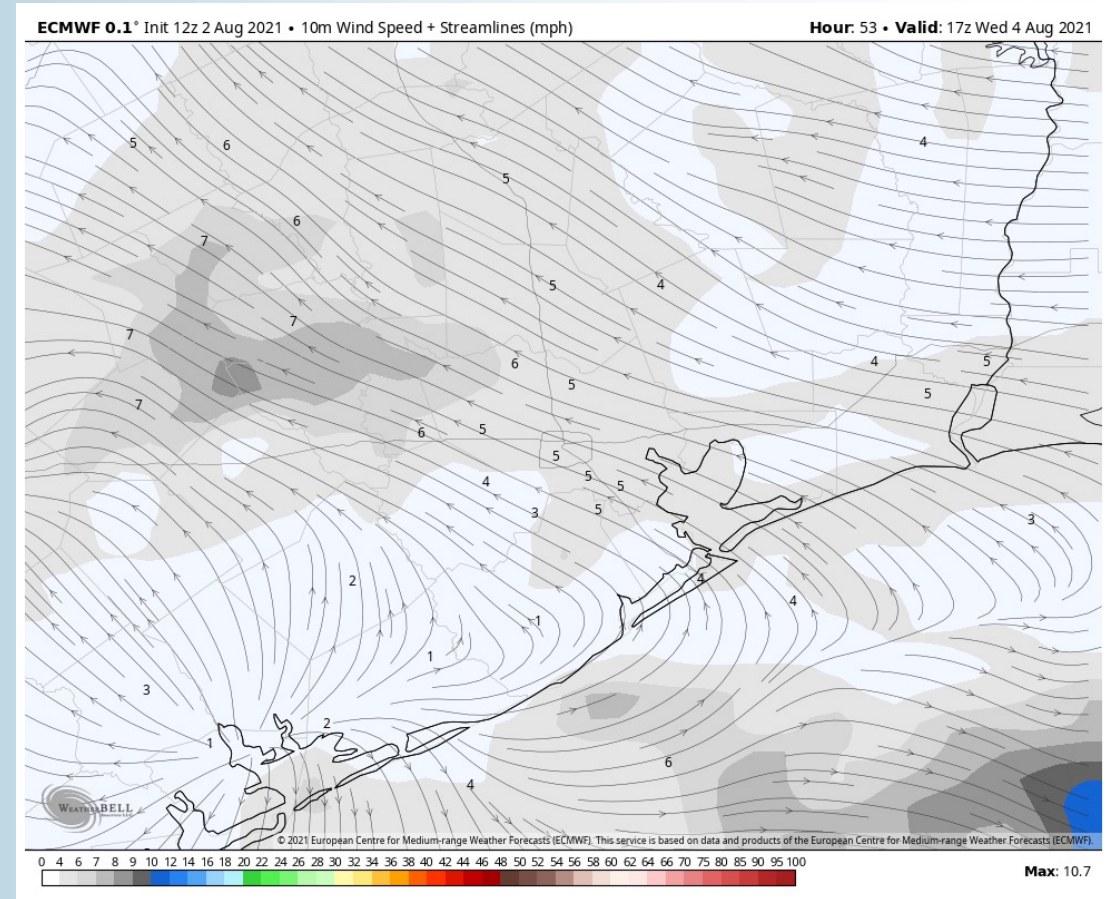
High Temps Tuesday



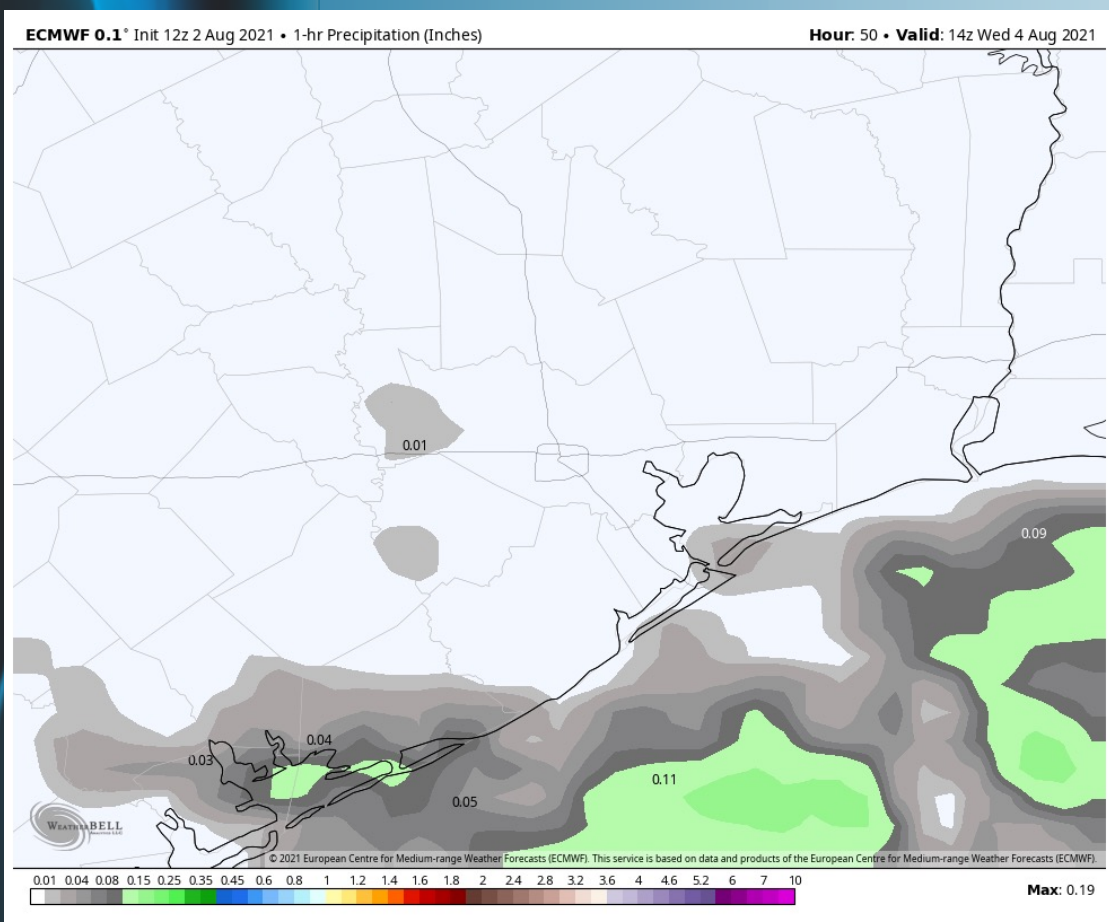
Short-Term Forecast Discussion

- The boundary from Monday / Tuesday will linger around offshore on Wednesday. Generally, this will favor the bulk of the activity to remain out to sea, but a few scattered showers/storms in the AM can't 100% be ruled out especially over the Boarding Station. Chances will decrease throughout the afternoon hours.
- Winds will generally be light at 5-10 MPH out of the E, weakening a bit throughout the day. Wind gusts to 15 MPH, locally higher in a storm.
- Temperatures will be in the low-90s inland with mid-80s over open water.
 - *No fog anticipated Wednesday.*

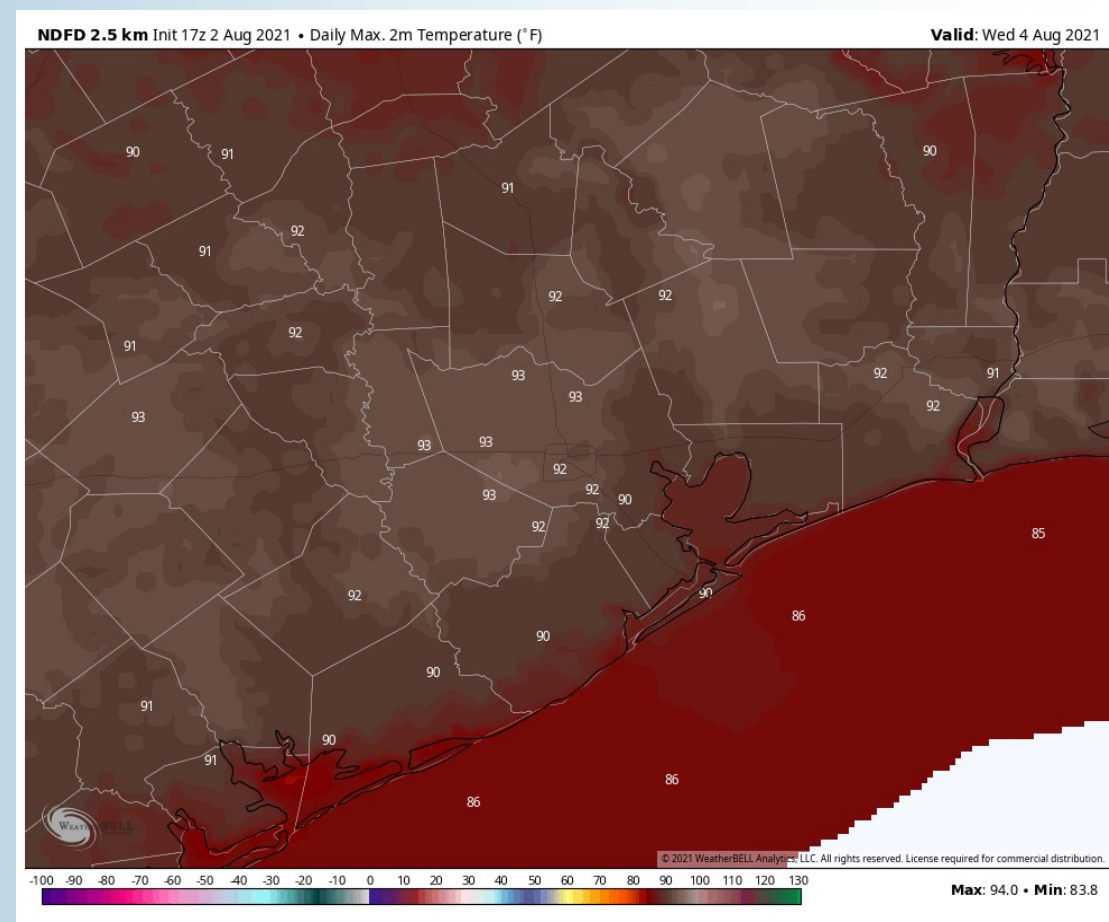
Sustained Winds (12 PM CT)



Simulated Radar Snapshot (9 AM CT)



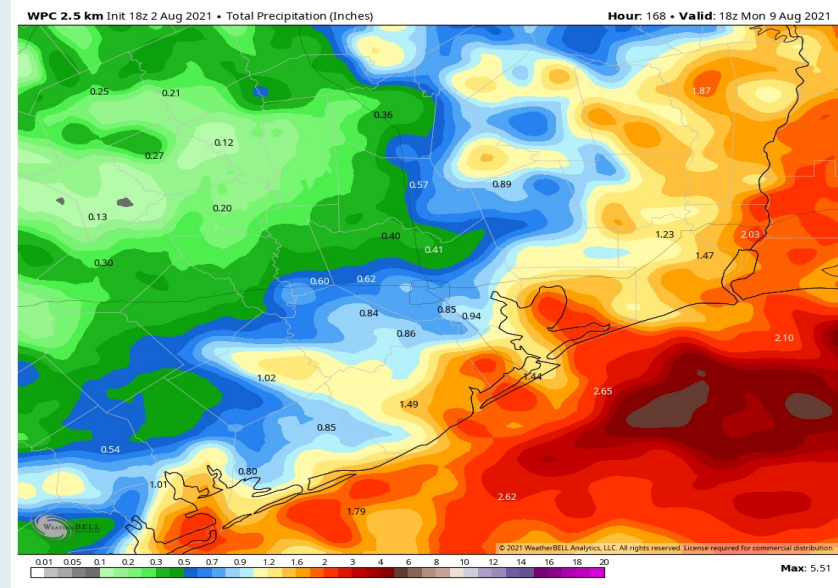
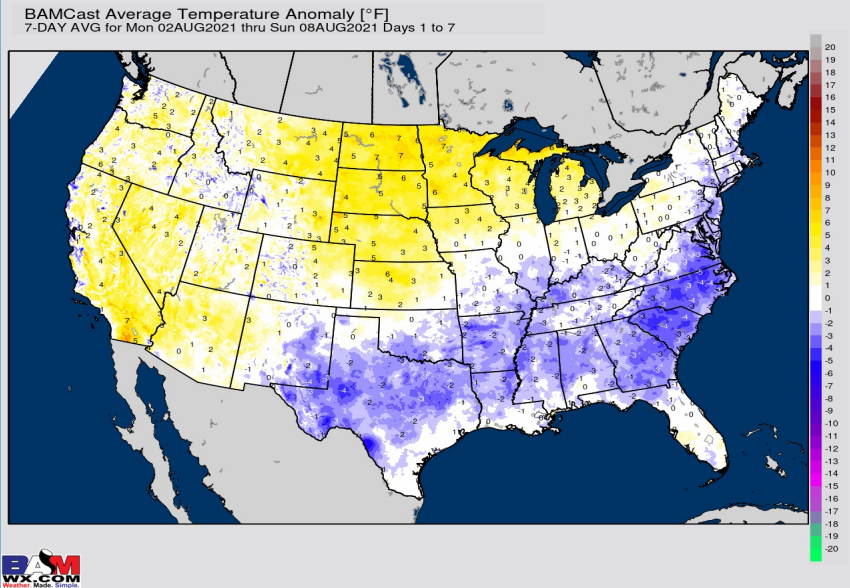
High Temperatures Wednesday



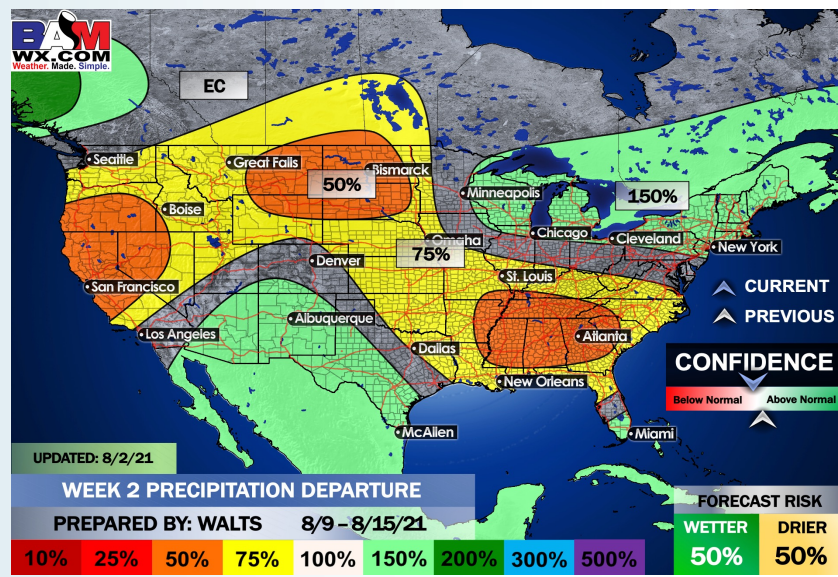
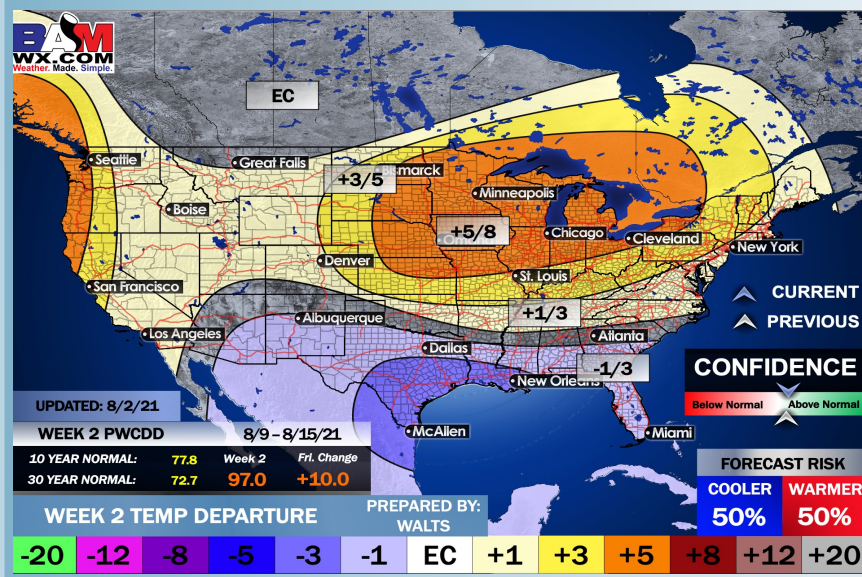
Long-Range Forecast Discussion

- Chances for precipitation will be on the increase, especially **TODAY – WED** as a frontal boundary slowly meanders around the area. However, daily chances continue to extend into next weekend. Temperatures look to run at / below normal.
- Cooler than normal temperatures and average precipitation risks look to be present as we head into the 2nd week of August.
- Heading later into August, we still favor overall more of a pattern suited for below average temps and above average precipitation. This is the time period where we would anticipate an increase in tropical activity across the Atlantic.

Week 1 Forecast



Week 2 Forecast



Weeks 3/4 Forecast

