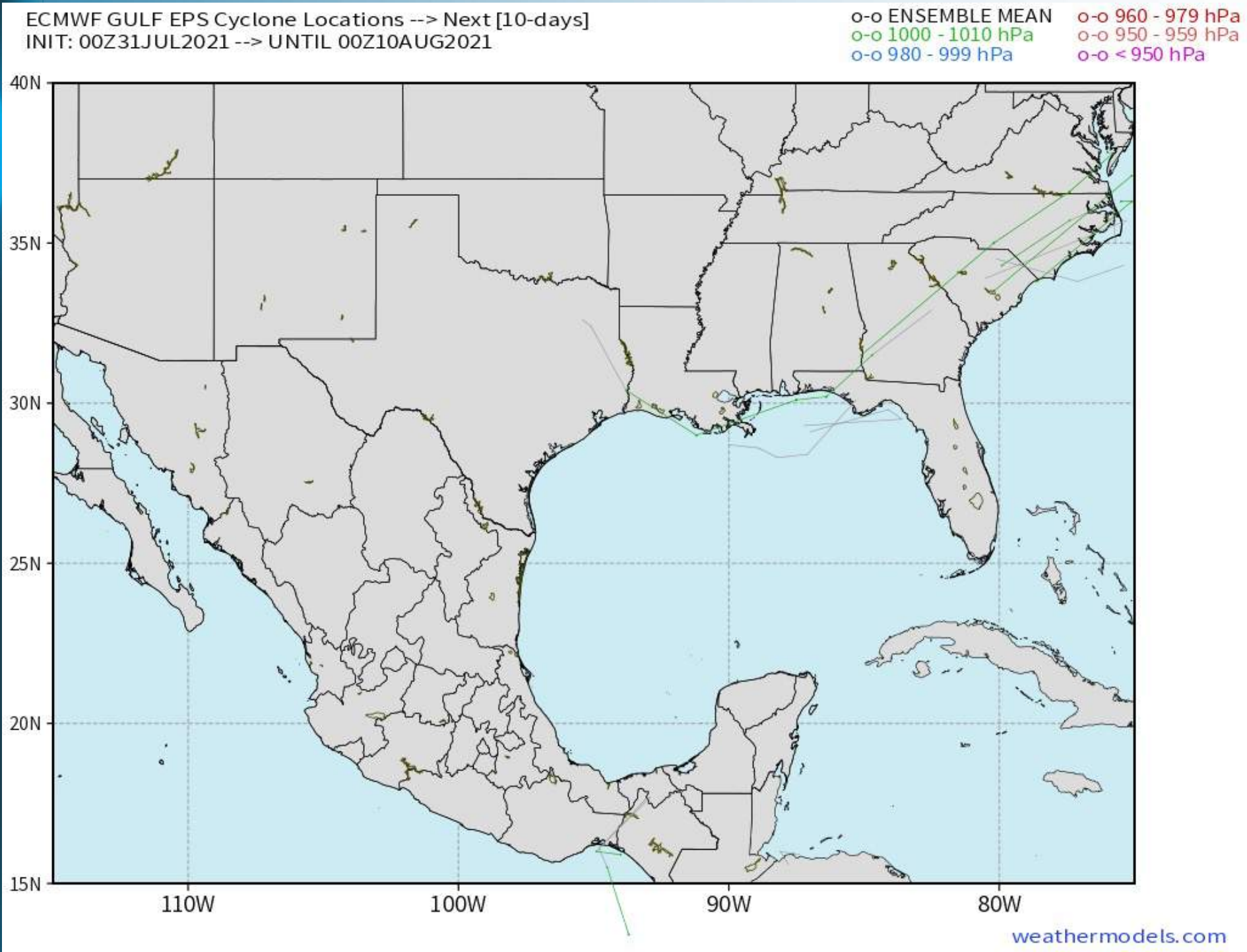


Updated: 12:40 PM CT, Sunday, August 1, 2021

- **As always, please do not hesitate to reach out to us with any forecast questions via the chat option on the Weather Porthole or our on call number, **(317)-560-8122** press 1 for forecast questions.**

Tropical Update:

European Ensemble Tracks



Tropical activity in the Gulf of Mexico is not anticipated in the next 7-10 days.



Visibility Report

Sunday, August 1, 2021

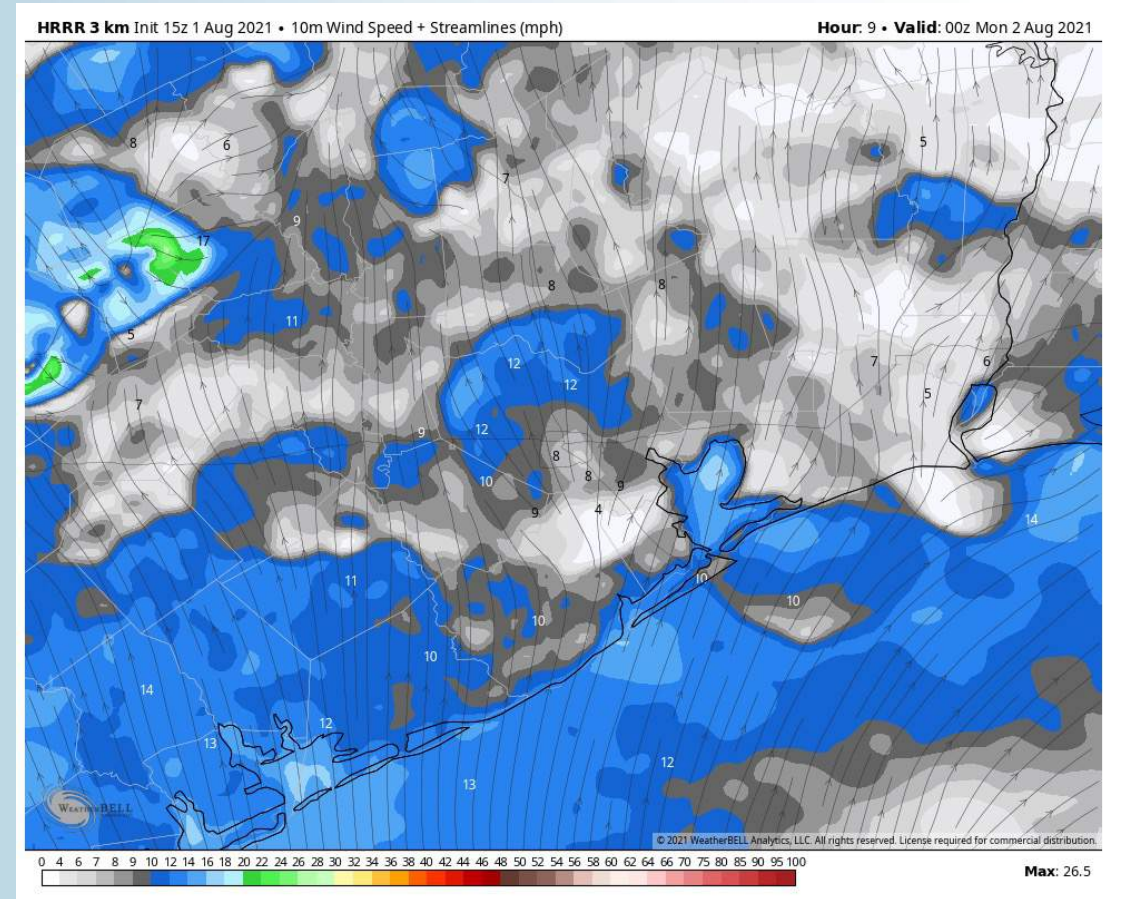
HOURLY VISIBILITY BREAKDOWN (in miles)

Time	08-01-2021 Sun 12pm	08-01-2021 Sun 1pm	08-01-2021 Sun 2pm	08-01-2021 Sun 3pm	08-01-2021 Sun 4pm	08-01-2021 Sun 5pm	08-01-2021 Sun 6pm	08-01-2021 Sun 7pm	08-01-2021 Sun 8pm	08-01-2021 Sun 9pm	08-01-2021 Sun 10pm	08-01-2021 Sun 11pm	08-02-2021 Mon 12am	08-02-2021 Mon 1am	08-02-2021 Mon 2am	08-02-2021 Mon 3am	08-02-2021 Mon 4am	08-02-2021 Mon 5am	08-02-2021 Mon 6am	08-02-2021 Mon 7am	08-02-2021 Mon 8am	08-02-2021 Mon 9am	08-02-2021 Mon 10am	08-02-2021 Mon 11am	08-02-2021 Mon 12pm	08-02-2021 Mon 1pm	08-02-2021 Mon 2pm	08-02-2021 Mon 3pm	08-02-2021 Mon 4pm	08-02-2021 Mon 5pm	08-02-2021 Mon 6pm	08-02-2021 Mon 7pm	08-02-2021 Mon 8pm	08-02-2021 Mon 9pm	08-02-2021 Mon 10pm	08-02-2021 Mon 11pm	
Houston Pilots N - 610 Bridge	10.00	6.006	1.696	3.426	1.961	2.613	3.363	7.159	7.816	9.413	7.874	7.036	9.090	8.898	8.588	8.422	8.225	8.051	7.954	7.712	7.865	8.518	5.297	8.005	10.00	10.00	10.00	4.402	3.584	2.152	6.736	1.928	10.00	4.712	5.379	8.462	
Houston Pilots M - Kinder 1	10.00	6.006	1.696	3.426	2.742	2.613	4.091	7.159	7.816	9.413	7.874	7.036	9.090	8.898	8.588	8.422	8.265	8.051	7.954	7.833	7.865	8.518	5.297	6.997	10.00	10.00	10.00	4.402	1.749	1.413	7.005	1.928	9.165	4.712	5.185	8.462	
Houston Pilots L - Greens Bayou	10.00	6.006	1.696	7.050	4.448	3.173	4.734	7.323	7.816	9.413	8.011	7.036	9.090	8.898	8.588	8.422	8.266	8.092	7.954	7.833	7.865	8.620	5.297	6.389	10.00	10.00	10.00	4.402	1.749	1.413	4.591	6.820	5.690	4.712	5.031	8.462	
Houston Pilots K - Shell Crude	10.00	6.006	1.696	4.318	4.448	4.691	4.734	7.556	7.816	9.413	8.338	9.272	9.247	9.116	8.649	8.508	8.268	8.092	7.954	7.944	7.918	8.368	6.554	6.389	10.00	10.00	10.00	4.402	1.749	1.413	2.719	6.820	5.207	4.712	5.031	8.462	
Houston Pilots J - Lynchburg Ferries	10.00	6.006	1.696	4.318	5.173	4.729	7.183	7.564	10.00	9.413	9.372	8.978	9.097	8.911	8.649	9.024	8.380	8.268	8.171	7.467	7.916	7.735	7.750	6.376	10.00	10.00	10.00	6.279	1.749	1.413	2.719	6.820	5.207	4.712	5.031	8.462	
Houston Pilots I - Exxon 3	10.00	7.163	4.096	4.318	6.864	6.773	7.183	7.564	10.00	10.00	9.372	8.942	8.926	8.809	8.649	8.841	8.380	8.268	8.238	7.467	7.912	7.735	9.120	6.376	10.00	10.00	10.00	5.739	1.749	1.463	2.719	6.355	5.207	4.712	5.031	8.375	
Houston Pilots H - Morgans Point	10.00	7.132	4.096	4.318	5.351	5.757	8.280	6.628	8.760	10.00	8.478	8.942	8.926	8.809	8.649	8.841	8.441	8.311	8.129	7.467	7.912	8.291	9.120	6.389	10.00	10.00	10.00	5.729	1.749	1.463	1.739	5.109	5.207	5.887	5.031	8.375	
Houston Pilots G - 75/76	5.759	6.091	4.096	4.318	3.765	5.757	7.495	6.628	7.880	9.950	9.226	9.074	9.097	8.984	8.879	8.729	8.634	8.515	8.129	8.078	8.017	8.368	9.166	8.596	10.00	10.00	7.481	5.729	2.627	4.599	1.739	5.109	5.207	7.578	5.031	8.375	
Houston Pilots F - 63/64	9.955	6.091	4.096	7.574	3.765	6.755	7.495	8.303	7.734	9.760	9.456	9.318	9.256	8.969	8.767	8.540	8.576	8.507	8.407	8.317	8.241	8.700	9.494	8.014	10.00	10.00	7.481	5.729	1.842	3.731	2.346	5.109	5.665	7.578	6.629	9.148	
Houston Pilots E - 51/52	9.197	6.091	6.420	7.574	3.765	7.419	7.495	9.133	7.734	9.815	9.456	9.318	9.256	8.849	8.811	8.697	8.576	8.523	8.424	8.434	8.345	8.734	9.247	8.014	10.00	10.00	7.061	1.122	1.842	2.950	2.346	6.600	5.832	8.083	7.461	9.317	
Houston Pilots D - 37/38	9.197	6.091	9.505	7.477	3.765	7.552	7.495	8.123	7.734	9.815	9.456	9.318	9.256	8.849	8.811	8.697	8.576	8.523	8.258	8.434	8.345	7.262	9.247	7.354	8.885	10.00	7.061	1.122	4.275	1.693	2.346	6.600	9.159	8.538	7.461	9.571	
Houston Pilots C - 25/26	8.137	9.756	9.505	7.574	5.307	5.585	8.589	9.133	7.804	9.999	9.834	9.514	9.268	8.849	8.855	8.811	8.898	8.847	8.424	8.696	8.582	7.262	9.247	7.030	7.205	10.00	6.167	1.122	1.358	1.693	5.175	6.600	9.159	9.559	7.461	9.571	
Houston Pilots B - 11/12	8.137	10.00	9.505	7.574	8.325	5.585	8.589	9.133	8.315	10.00	10.00	9.846	9.844	9.304	9.081	9.303	10.00	9.426	9.042	8.727	8.887	7.262	9.247	7.030	5.864	10.00	6.167	1.122	1.358	1.693	5.175	6.779	9.159	9.559	8.978	9.995	
Houston Pilots A - 1 & 2 Bravo	6.189	10.00	10.00	9.234	10.00	5.585	10.00	10.00	10.00	10.00	10.00	10.00	10.00	10.00	10.00	10.00	10.00	10.00	10.00	10.00	10.00	8.905	8.305	9.033	8.209	4.795	7.590	6.167	4.698	1.358	3.217	6.161	6.779	10.00	10.00	8.502	9.537

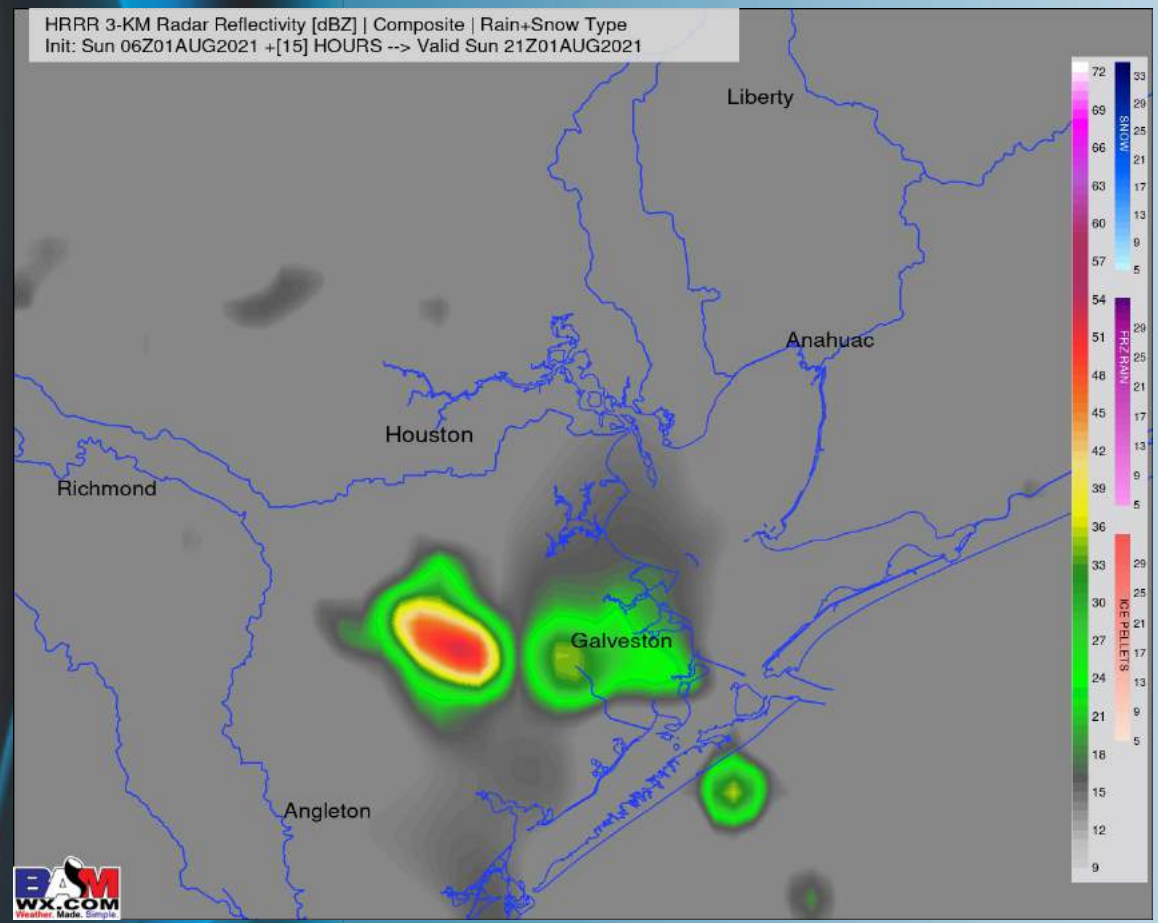
Short-Term Forecast Discussion

- Still looking at a few pop up thunderstorms this afternoon with roughly 20% in areal coverage, especially from 2 PM – 8 PM. As the sun sets, activity should wane. A locally gusty storm will be possible as well. An extremely isolated light shower cannot be ruled out in the overnight but favor dry overall.
 - Winds pick up into the afternoon, sustained around 8 – 13 MPH and gust approaching 20 MPH possible. Stronger wind gust will be possible underneath the more pronounced cells.
 - Highs today look to get into the lower to mid 90's F over open waters. Warmer towards the HOU metro. "Feels-like" temperatures look to get into the low to mid 100's F.
- *No fog anticipated today.*

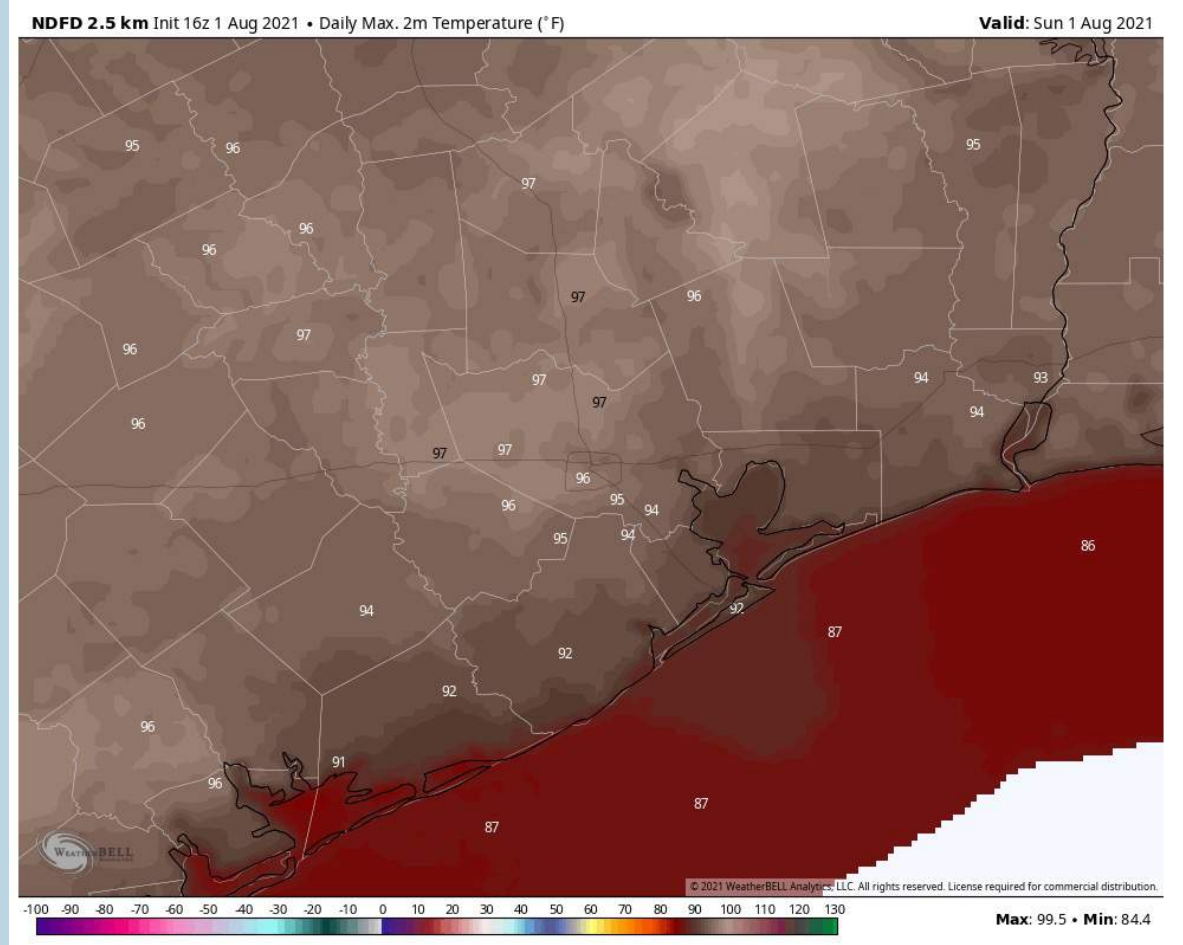
Sustained Winds (7 PM CT)



Simulated Radar Snapshot (4 PM CT)



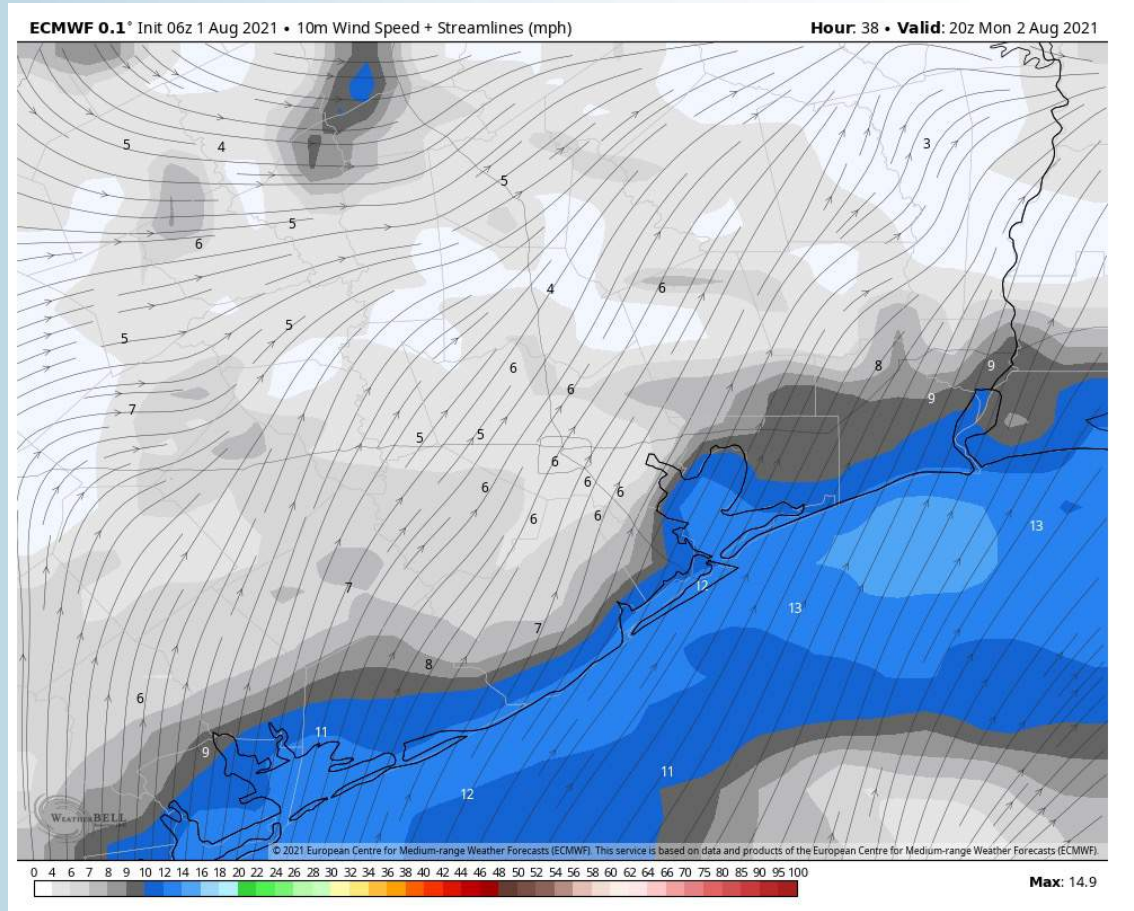
High Temperatures Today



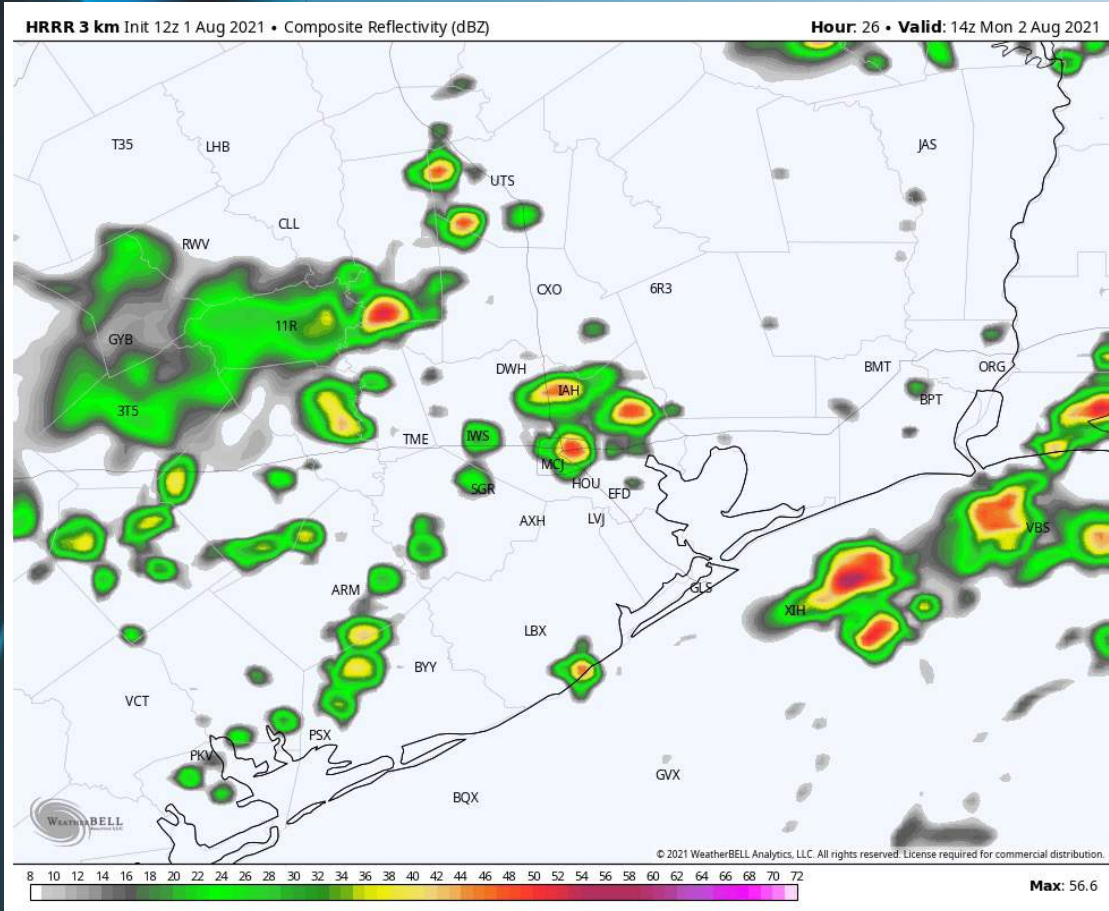
Short-Term Forecast Discussion

- A few spotty showers/ storms will be possible Monday morning, especially from 7 AM – 11 AM. In behind this morning activity, we will likely see a lull of activity with isolated chances into the early afternoon hours. There still remains uncertainty on exact timing of better storm potential tomorrow evening. Will need to watch close to 6 PM for this threat, however, some data holds off on this as late as midnight. This will need fine-tuned into tomorrow's report.
- Winds into Monday morning start to shift more out of the W/ WSW. Into the afternoon/ evening, winds are anticipated to shift back out of the SW. Winds will likely be around 8 – 13 MPH sustained in the afternoon with gust around 15 – 18 MPH. Stronger wind gust will be possible under storms.
- Monday will feature highs in the low to mid 90s for most locations.
- *Currently not favoring fog for Monday.*

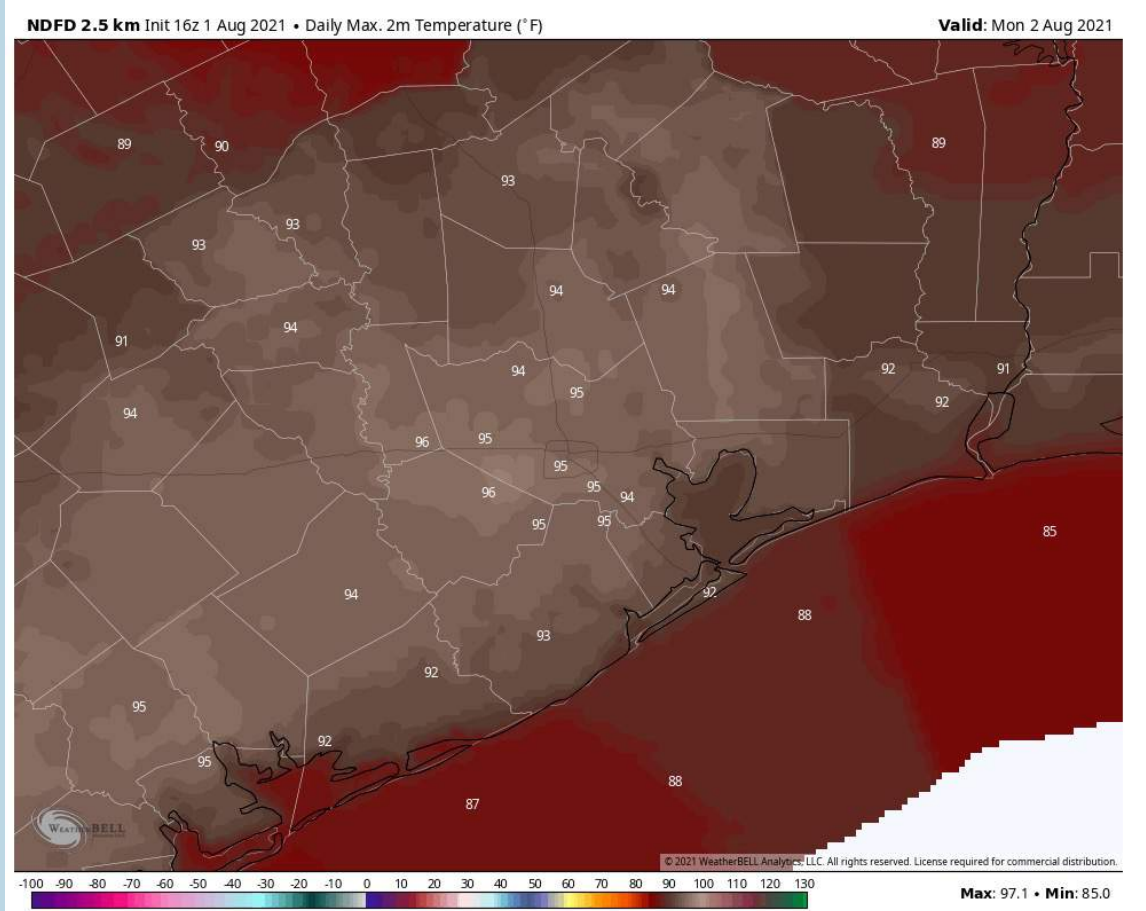
Sustained Winds (2 PM CT)



Simulated Radar Snapshot (9 AM CT)



High Temperatures Monday



Short-Term Forecast Discussion

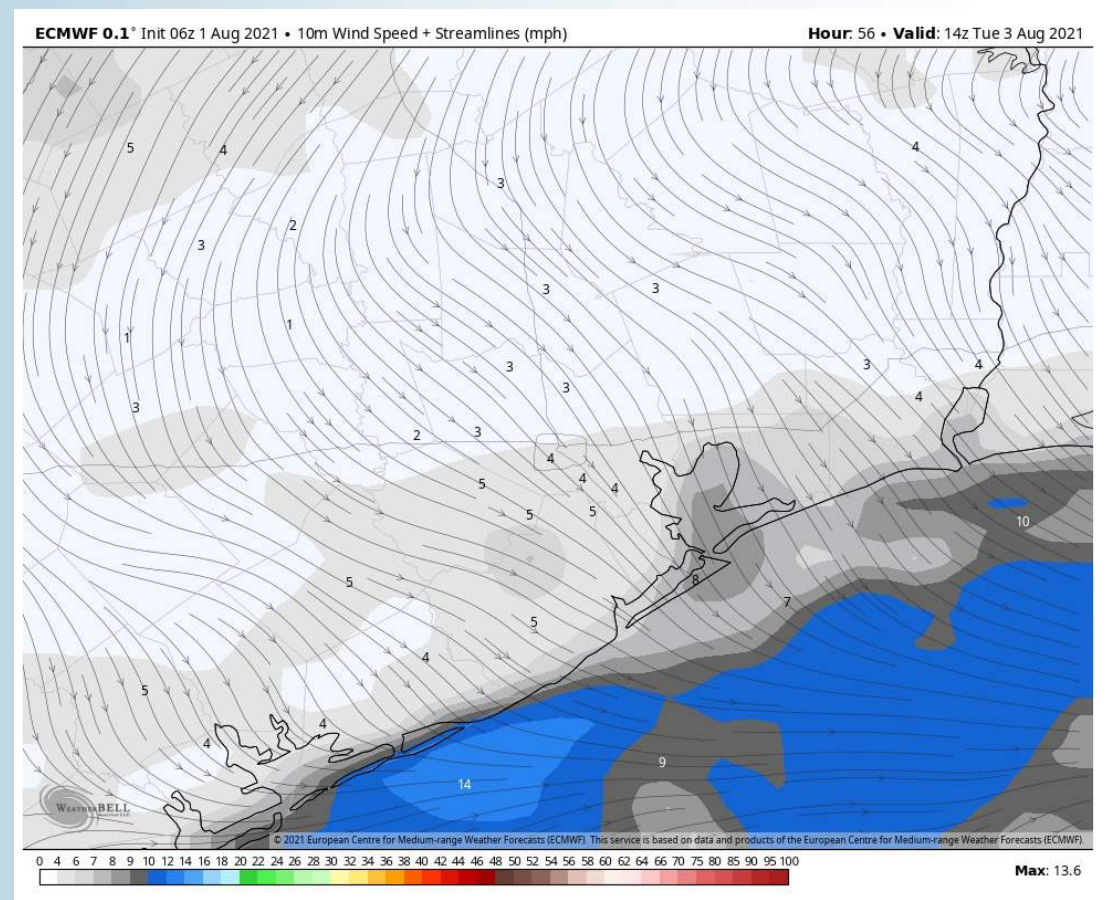
- **Regardless of the exact timing of a frontal boundary late Monday into Tuesday morning, it is expected that showers/ thunderstorms will be around the area through TUE morning. Spotty showers will continue to be possible into the afternoon as well.**

- **Once the front works through the area in the AM hours, expecting winds to stay lighter and generally come out of the NW at 5-10 MPH, a few gusts to 15 MPH possible.**

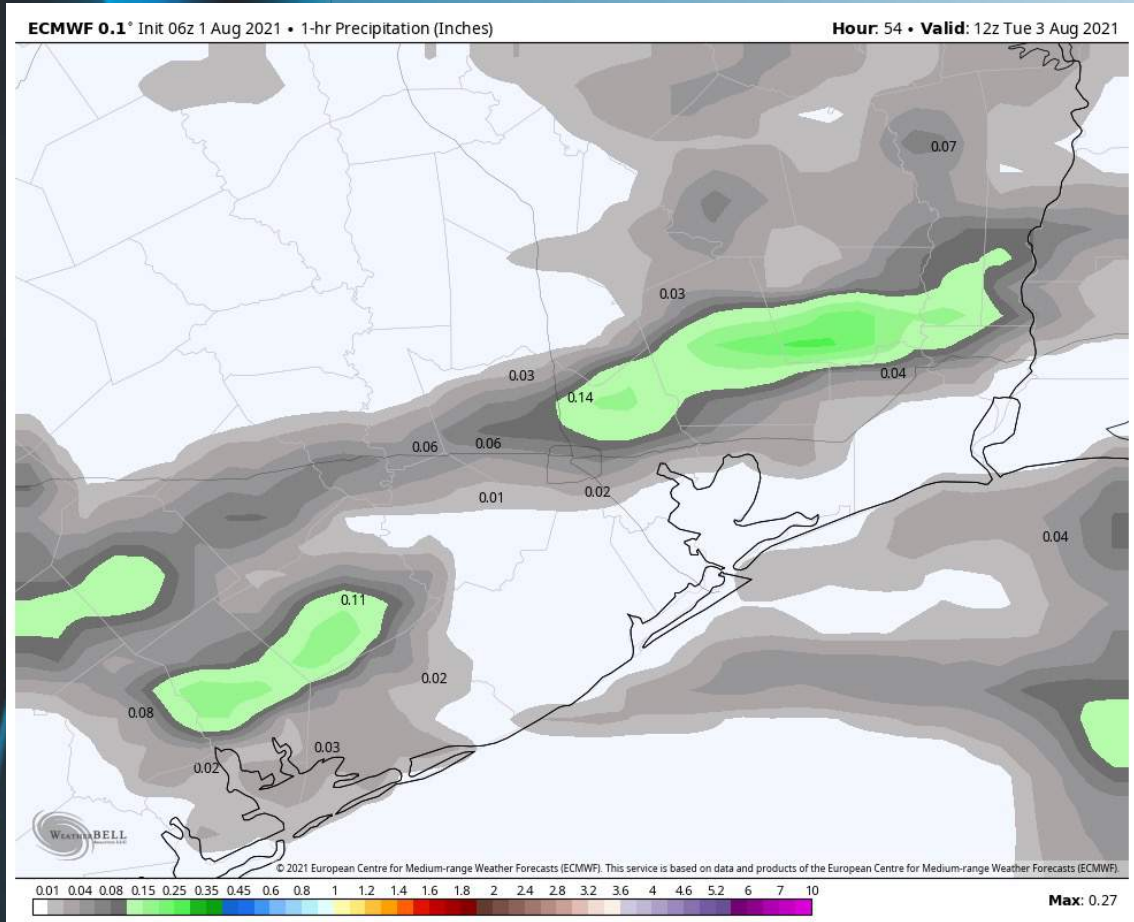
- **Tuesday will be one of the cooler days with temps into the upper 80's over open waters.**

- ***No fog is favored for Tuesday.***

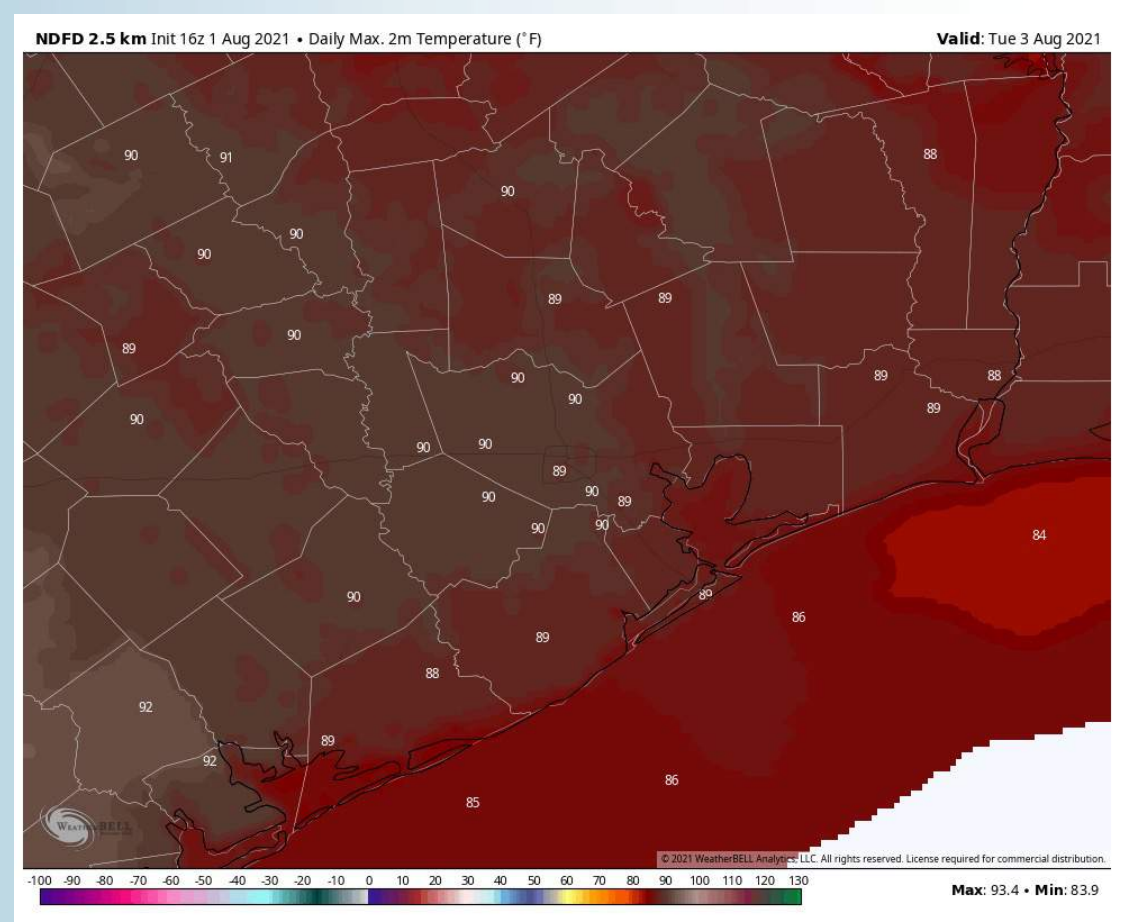
Sustained Winds (9 AM CT)



Simulated Radar Snapshot (7 AM CT)



High Temps Tuesday



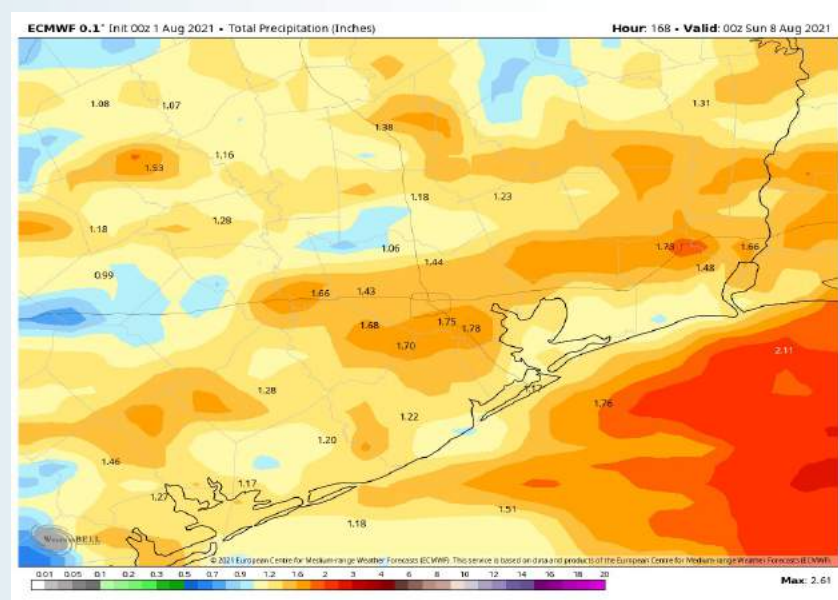
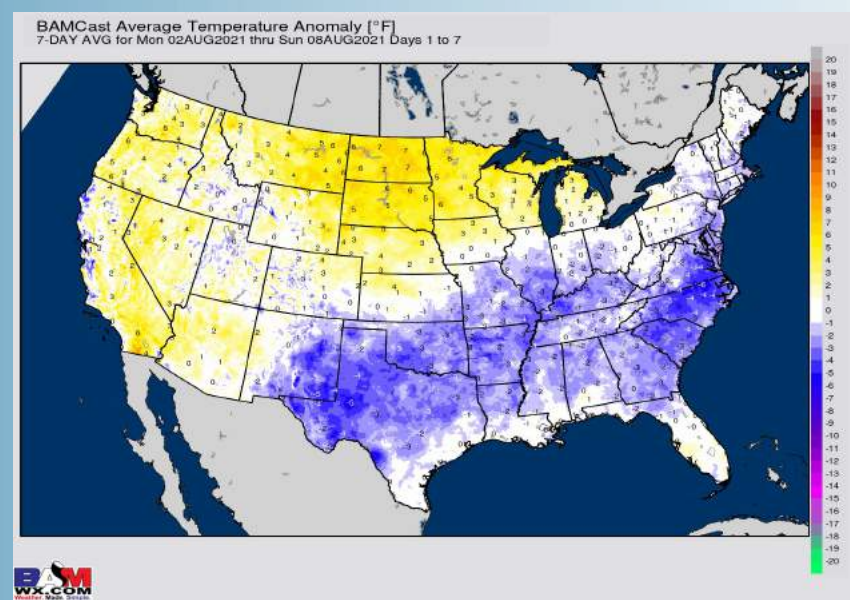
Long-Range Forecast Discussion

- Chances for precipitation will be on the increase, especially TUE – THU as a frontal boundary slowly meanders around the area. However daily chances continue to extend into next weekend. Temperatures look to run at/ below normal.

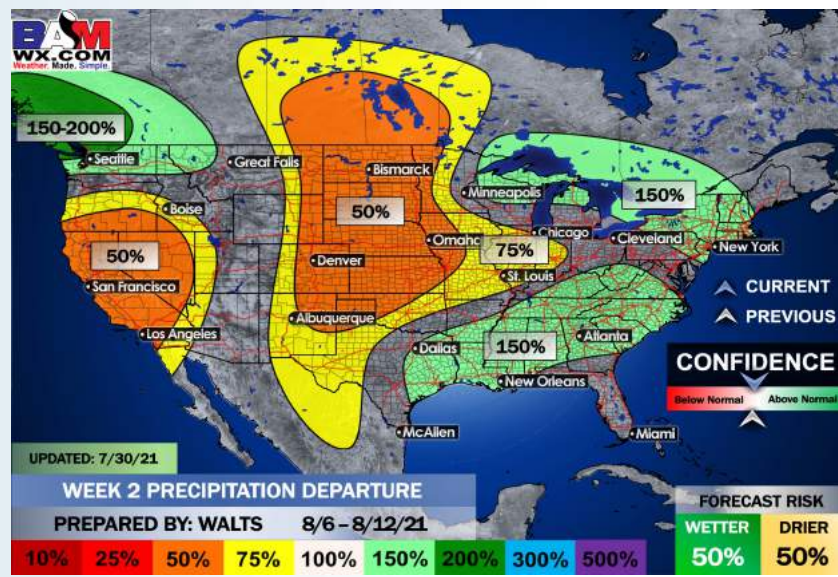
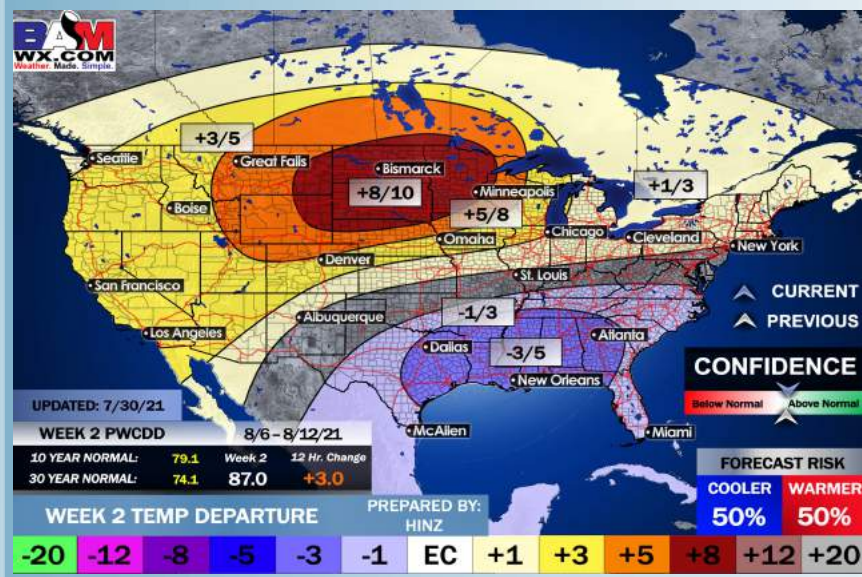
- The pattern begins to pick up into week 2 with below average risks and above average precipitation as we get a better flow from the Gulf.

- Heading later into August, we still favor overall more of a pattern suited for below average temps and above average precipitation. This is the time period where we would anticipate an increase in tropical activity across the Atlantic.

Week 1 Forecast



Week 2 Forecast



Weeks 3/4 Forecast

