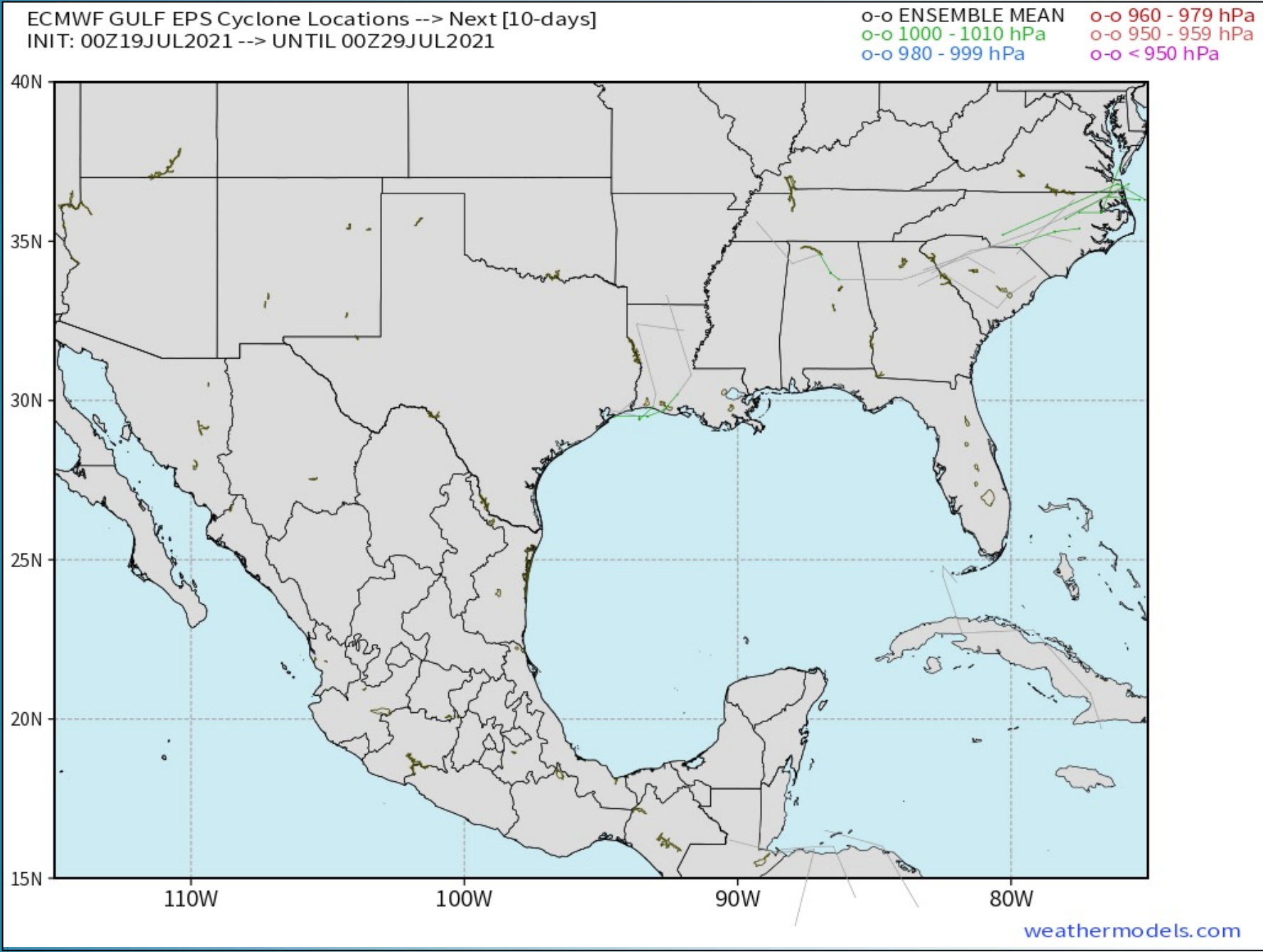


Updated: 4:35 AM CT, Monday, July 19, 2021

- **As always, please do not hesitate to reach out to us with any forecast questions via the chat option on the Weather Porthole or our on call number, **(317)-560-8122** press 1 for forecast questions.**

Tropical Update:



Tropical activity in the Gulf of Mexico is not anticipated in the next 7-10 days.



Visibility Report

Monday, July 19, 2021

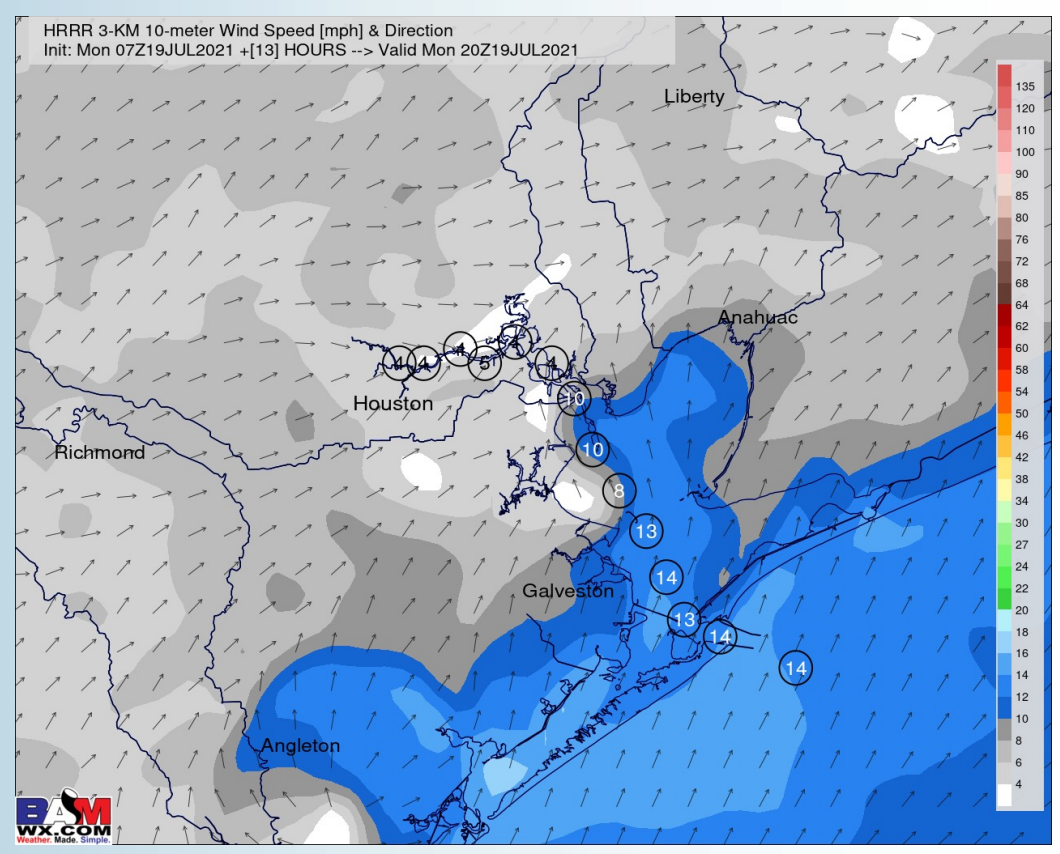
HOURLY VISIBILITY BREAKDOWN (in miles)

Time	07-19-2021 Mon 3am	07-19-2021 Mon 4am	07-19-2021 Mon 5am	07-19-2021 Mon 6am	07-19-2021 Mon 7am	07-19-2021 Mon 8am	07-19-2021 Mon 9am	07-19-2021 Mon 10am	07-19-2021 Mon 11am	07-19-2021 Mon 12pm	07-19-2021 Mon 1pm	07-19-2021 Mon 2pm	07-19-2021 Mon 3pm	07-19-2021 Mon 4pm	07-19-2021 Mon 5pm	07-19-2021 Mon 6pm	07-19-2021 Mon 7pm	07-19-2021 Mon 8pm	07-19-2021 Mon 9pm	07-19-2021 Mon 10pm	07-19-2021 Mon 11pm	07-20-2021 Tue 12am	07-20-2021 Tue 1am	07-20-2021 Tue 2am	07-20-2021 Tue 3am	07-20-2021 Tue 4am	07-20-2021 Tue 5am	07-20-2021 Tue 6am	07-20-2021 Tue 7am	07-20-2021 Tue 8am	07-20-2021 Tue 9am	07-20-2021 Tue 10am	07-20-2021 Tue 11am	07-20-2021 Tue 12pm	07-20-2021 Tue 1pm	07-20-2021 Tue 2pm
Houston Pilots N - 610 Bridge	6.161	5.881	8.096	8.037	7.866	7.713	8.679	9.698	10.00	10.00	10.00	6.354	1.916	7.283	0.798	2.247	4.033	3.530	4.715	4.613	4.577	3.791	5.687	8.232	8.094	4.592	3.672	2.623	4.291	3.409	5.826	6.134	7.102	6.595	6.164	6.229
Houston Pilots M - Kinder 1	6.161	5.881	8.100	7.954	7.864	7.706	8.487	9.713	10.00	10.00	10.00	6.354	1.916	4.326	0.798	2.247	5.967	3.662	4.715	4.613	4.579	3.791	5.687	8.232	8.094	4.592	3.672	2.623	4.291	3.409	5.826	6.134	7.102	6.595	6.164	6.229
Houston Pilots L - Greens Bayou	6.161	6.075	7.208	7.928	7.829	7.676	8.454	9.786	10.00	10.00	10.00	6.354	1.916	3.182	0.798	4.534	5.967	3.662	4.715	4.613	4.579	3.848	5.289	8.099	7.644	4.201	3.672	2.623	4.619	3.409	6.473	6.134	7.102	6.595	6.538	6.189
Houston Pilots K - Shell Crude	6.601	6.075	8.086	7.873	7.829	7.676	8.454	9.714	10.00	10.00	10.00	5.298	1.916	3.182	0.798	4.534	5.967	3.662	4.715	4.613	4.916	3.848	4.492	8.232	8.079	4.592	5.734	2.623	4.256	3.409	6.859	6.519	7.102	6.490	6.555	6.872
Houston Pilots J - Lynchburg Ferries	8.302	6.471	7.820	7.816	7.829	7.676	8.450	9.538	10.00	10.00	10.00	5.298	1.916	3.182	0.798	4.534	5.967	5.067	5.034	5.440	4.430	4.197	4.854	6.646	8.079	4.592	4.777	2.623	1.555	3.409	6.859	7.984	6.954	6.361	6.074	7.589
Houston Pilots I - Exxon 3	8.502	8.238	8.086	7.816	7.829	7.676	8.450	9.538	10.00	10.00	10.00	5.298	1.916	3.182	2.346	4.534	4.603	5.344	5.034	5.749	4.430	4.197	4.372	8.042	8.079	5.613	2.563	2.623	1.555	3.409	6.859	6.519	6.954	6.361	6.074	6.644
Houston Pilots H - Morgans Point	8.532	8.238	8.086	7.829	7.829	7.676	8.454	9.786	10.00	10.00	10.00	5.298	2.864	3.182	2.346	2.312	4.163	5.344	5.034	5.749	2.356	4.197	4.191	8.365	8.079	5.613	2.563	2.623	3.171	3.341	5.231	5.433	6.954	6.361	6.074	6.644
Houston Pilots G - 75/76	8.654	8.406	8.194	7.971	7.829	7.676	8.775	10.00	10.00	10.00	10.00	4.553	2.864	3.182	2.346	2.312	4.163	5.238	5.633	6.495	2.356	4.197	4.191	8.463	8.158	8.114	5.983	4.878	4.103	1.753	5.231	5.433	6.954	6.361	6.074	6.003
Houston Pilots F - 63/64	8.896	8.592	8.531	7.635	8.159	8.229	9.244	10.00	10.00	10.00	9.455	3.718	6.325	3.898	2.346	2.312	4.163	6.053	4.972	6.189	2.356	4.526	4.191	8.392	8.663	8.090	8.239	6.384	2.656	1.787	5.231	5.433	7.069	6.637	6.074	5.991
Houston Pilots E - 51/52	8.896	8.592	8.573	8.136	8.217	8.318	9.330	10.00	10.00	10.00	9.455	3.718	1.481	3.898	3.195	2.312	4.163	7.854	5.633	6.189	6.488	5.751	4.562	6.762	7.860	6.812	8.071	6.824	2.656	1.787	2.395	4.423	5.230	6.469	9.300	5.991
Houston Pilots D - 37/38	8.896	8.592	8.573	8.136	8.217	8.318	9.330	9.970	8.696	9.594	9.455	3.718	1.481	4.912	4.702	4.635	5.039	7.854	5.633	6.004	8.107	6.404	5.730	6.175	7.090	6.812	8.071	6.824	2.656	1.787	2.395	4.423	5.230	5.949	6.267	6.003
Houston Pilots C - 25/26	8.975	8.813	8.811	8.455	8.665	8.872	9.477	9.970	8.560	9.594	8.706	3.718	1.481	8.218	4.702	9.096	9.662	7.854	6.443	6.004	8.107	4.957	5.949	6.403	6.352	6.812	8.856	7.566	2.917	1.787	2.395	4.423	5.230	6.469	6.267	8.632
Houston Pilots B - 11/12	9.717	9.524	9.857	9.293	10.00	9.972	9.477	9.970	8.560	9.594	8.706	7.737	1.481	10.00	9.527	10.00	9.662	7.854	6.443	6.456	8.107	4.957	5.949	7.429	6.352	6.812	8.597	7.566	4.045	1.821	2.395	4.423	4.930	6.261	6.267	7.747
Houston Pilots A - 1 & 2 Bravo	10.00	10.00	9.220	9.583	10.00	10.00	9.779	9.970	8.560	9.633	8.706	9.435	8.652	10.00	10.00	10.00	10.00	9.085	6.571	7.346	10.00	4.957	7.425	8.077	6.568	8.041	7.030	6.855	4.767	2.685	3.058	4.652	4.713	5.149	5.291	6.634

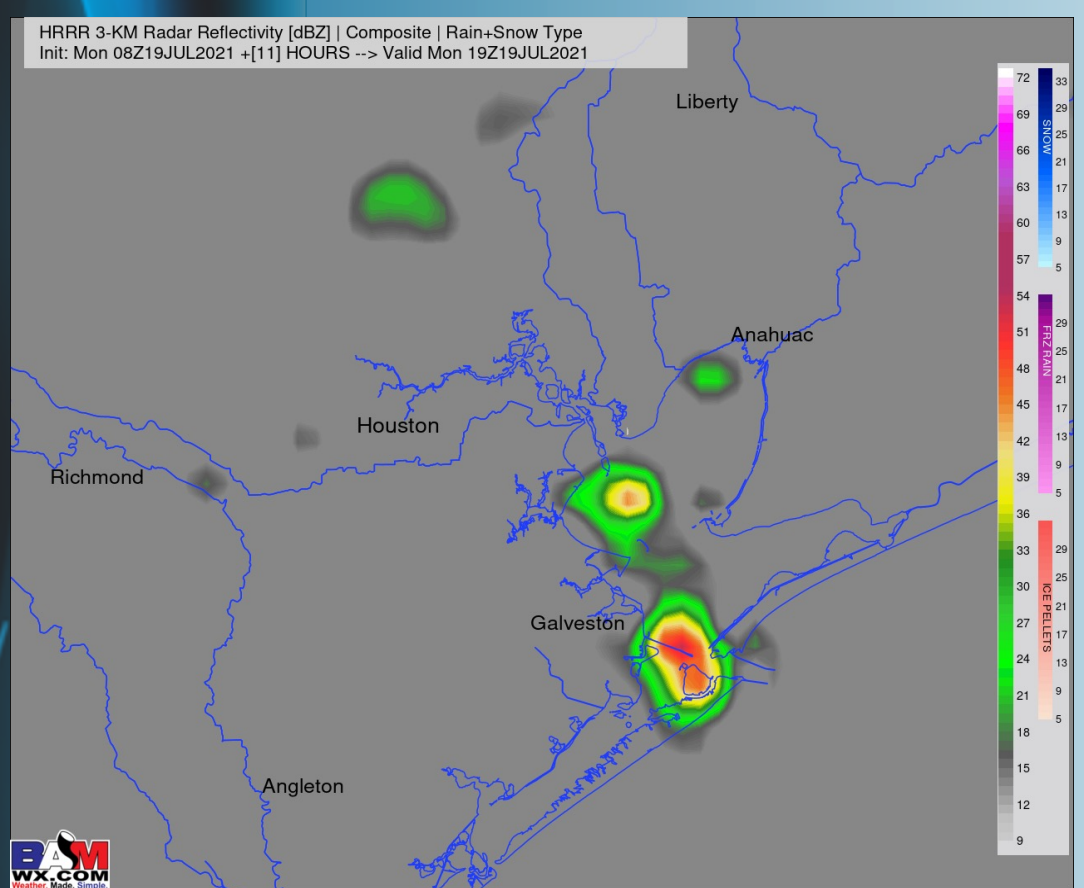
Short-Term Forecast Discussion

- A pretty quiet morning is anticipated in regards to little precipitation chance today. We think an isolated ~20% chance of a shower / storm can't be ruled out especially between noon to 6pm CT. Still eyeing a more consolidated line of storms moving from NW to SE approaching HOU to the Bay from 10pm CT to 4am CT tonight; lower visibility, gusty winds and locally heavy downpours will be possible as the line moves through.
- Winds today look to be out of the SSW with sustained winds near 8-13 MPH for much of the day at the boarding station (locally higher in any storms that may develop or come overhead). Winds look to increase overnight to 10-15 MPH sustained.
- Today continues the theme of highs in the mid 80s over open waters / lower to mid 90s in-land.
- *Not expecting fog for tonight.*

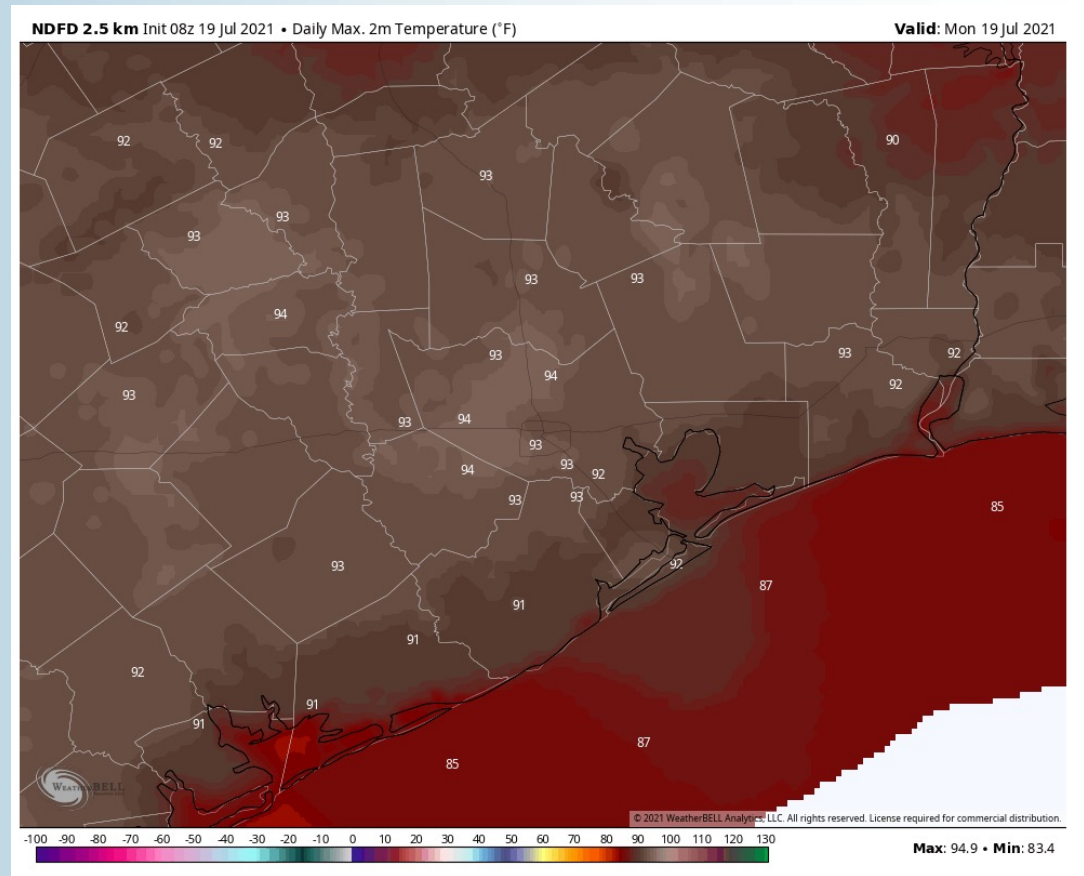
Sustained Winds (3 PM CT)



Simulated Radar Snapshot (2 PM CT)



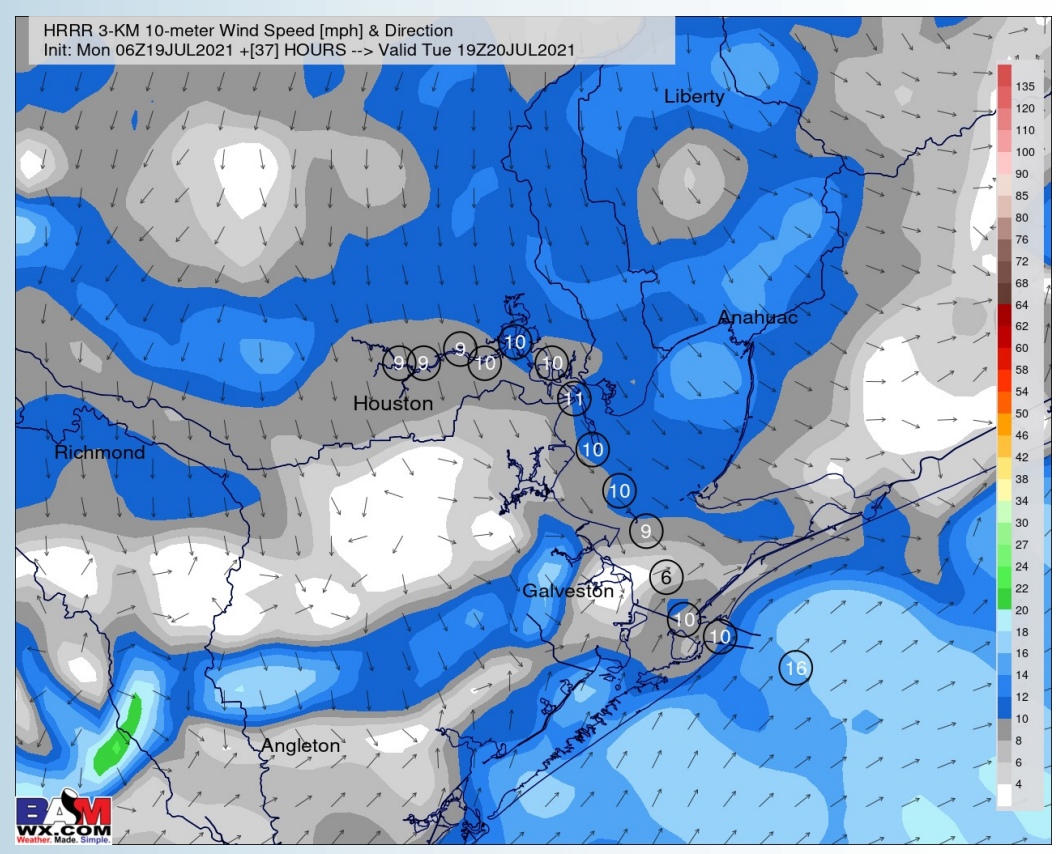
High Temps Monday



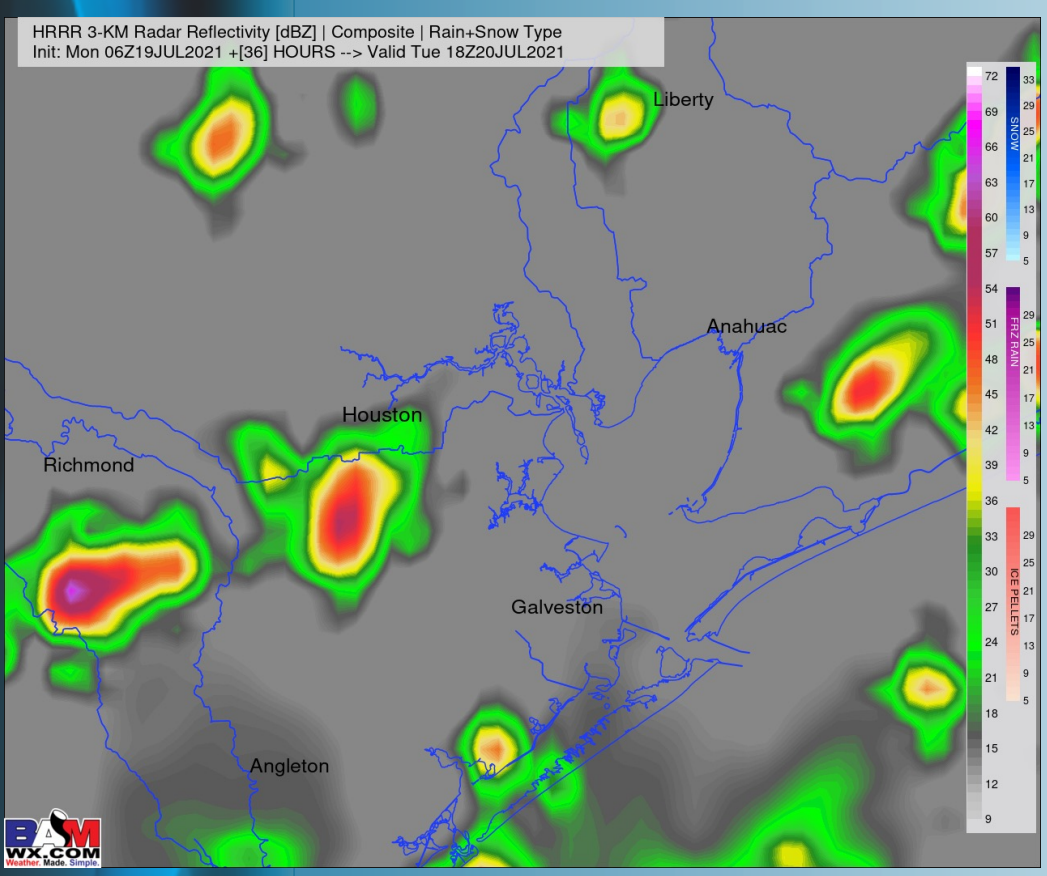
Short-Term Forecast Discussion

- Pending exact timing, we'd favor pre-dawn Tue AM to see the highest precip chances we've seen recently (~80%) with the approaching front. Things look to turn a bit more isolated into the afternoon hours (~30%). Severe weather is not expected to be present on Tuesday.
- Favoring the mid AM hours for winds to shift more out of the NW and stay calmer, sustained 5-10 MPH with gusts to 15 MPH. Winds look to shift back out of the S mid to late afternoon to the evening, staying rather weak.
- Temps look to remain in the mid-80s over over waters on Tuesday.
- *No fog is in the forecast for Tuesday.*

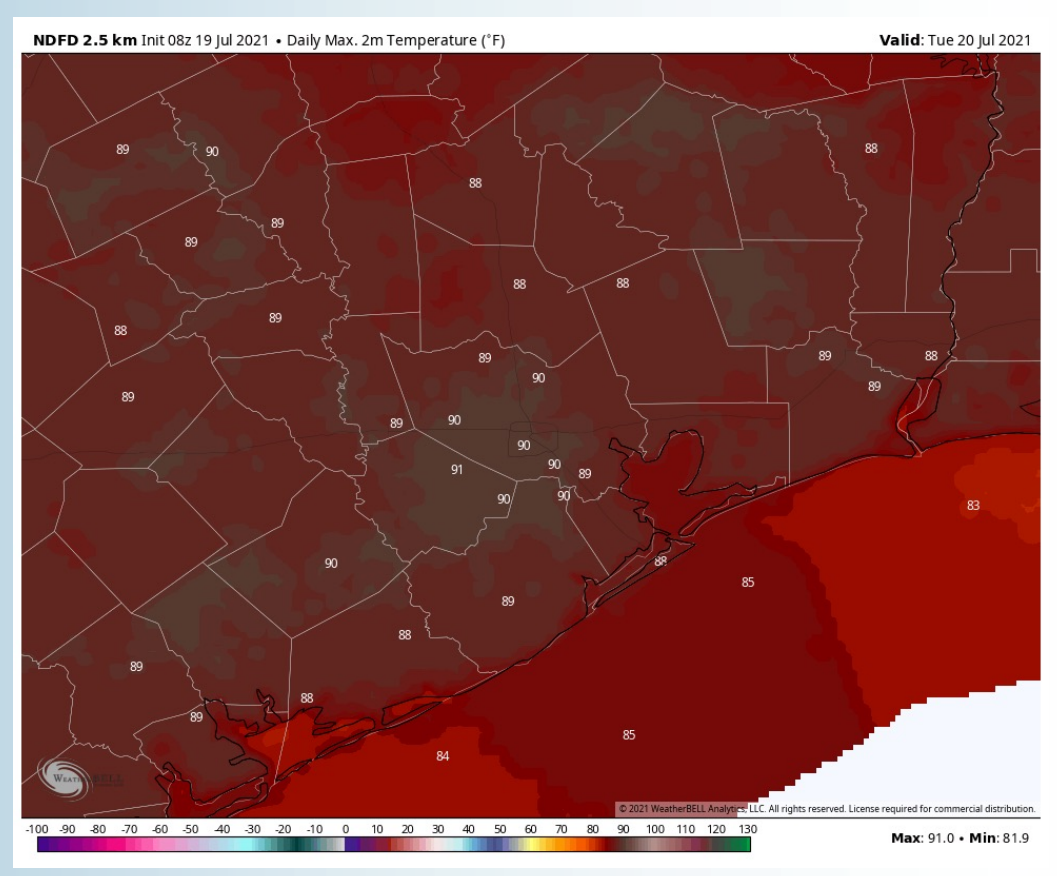
Sustained Winds (2 PM CT)



Simulated Radar Snapshot (1 PM CT)



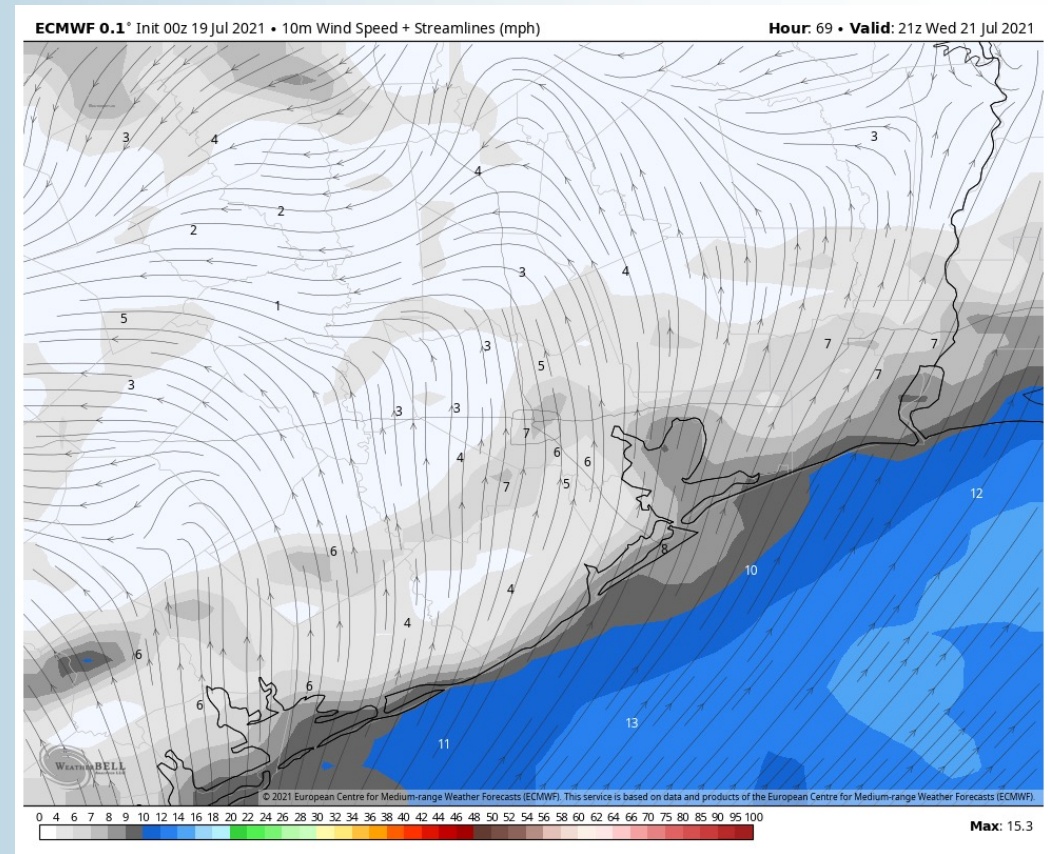
High Temps Tuesday



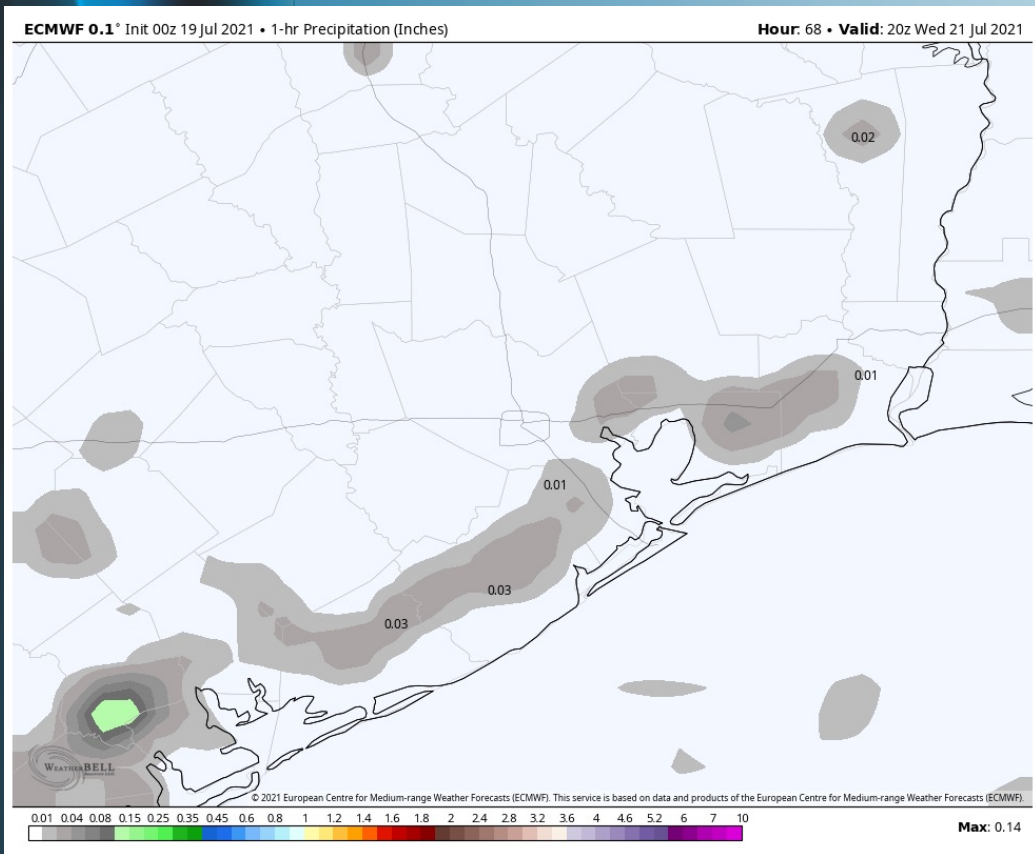
Short-Term Forecast Discussion

- Isolated precipitation is possible after midnight Tuesday night to around daybreak Wednesday morning; after a bit of a break, we see another isolated precipitation chance mid-afternoon to the evening hours. Overall, we see multiple dry hours Wednesday at this distance.
- Winds look to return back out of the SSW Wednesday, sustained at 5-10 MPH.
- Temps look to reach into the mid to upper 80s on WED over open waters.
- *No fog is in the forecast for Wednesday.*

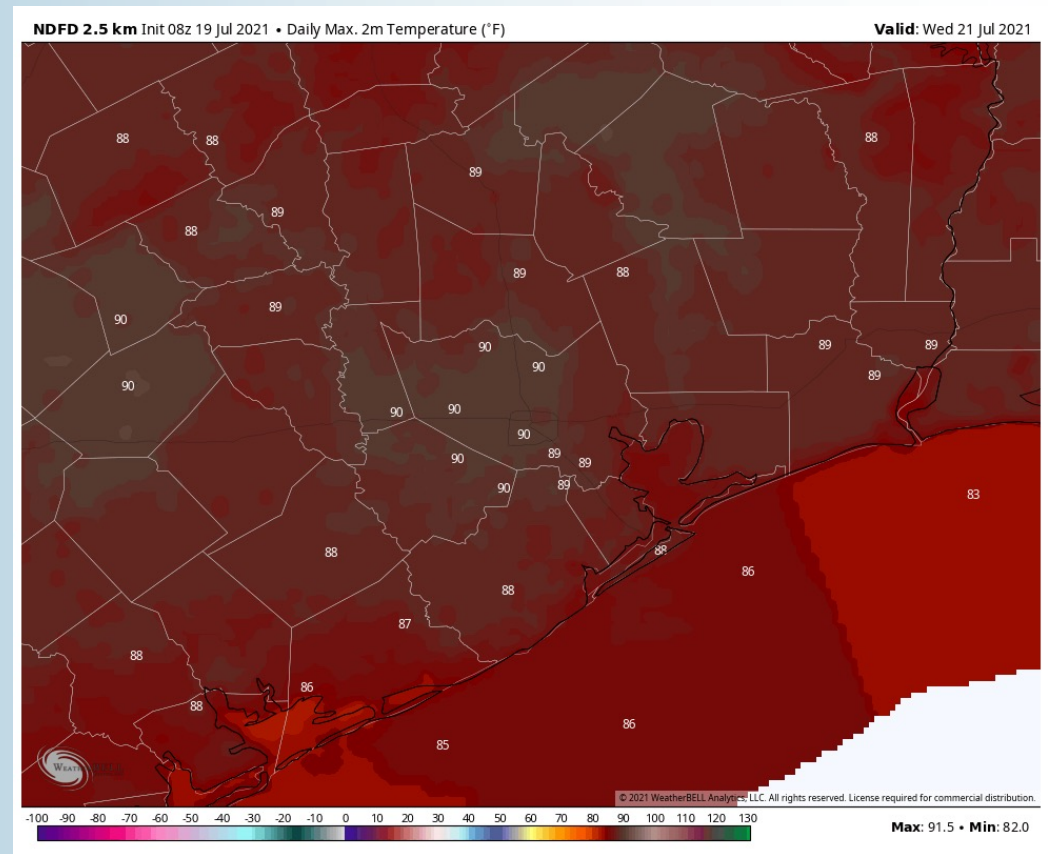
Sustained Winds (4 PM CT)



Simulated Radar Snapshot (3 PM CT)



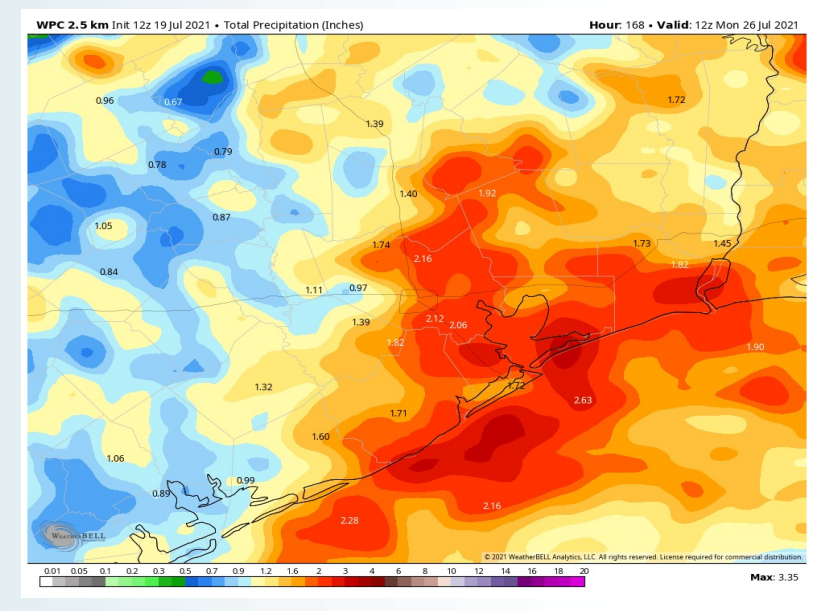
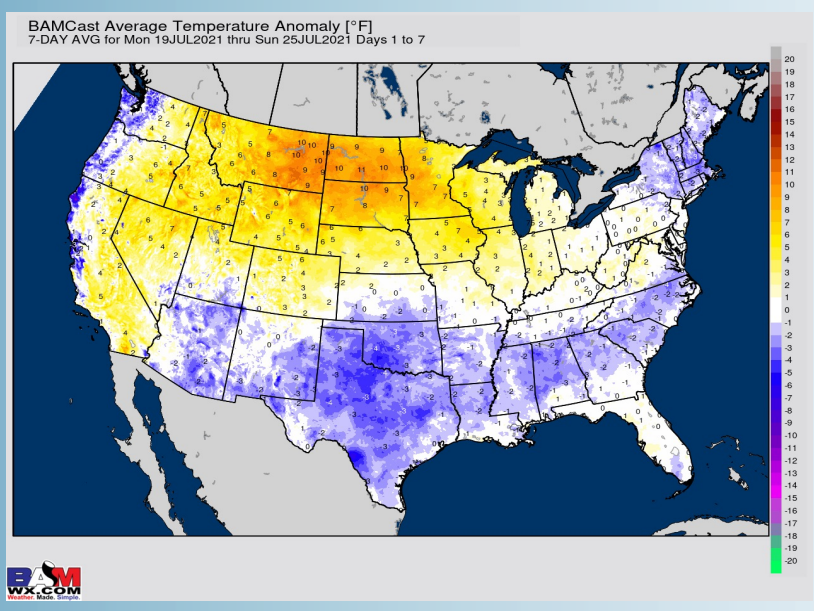
High Temps Wednesday



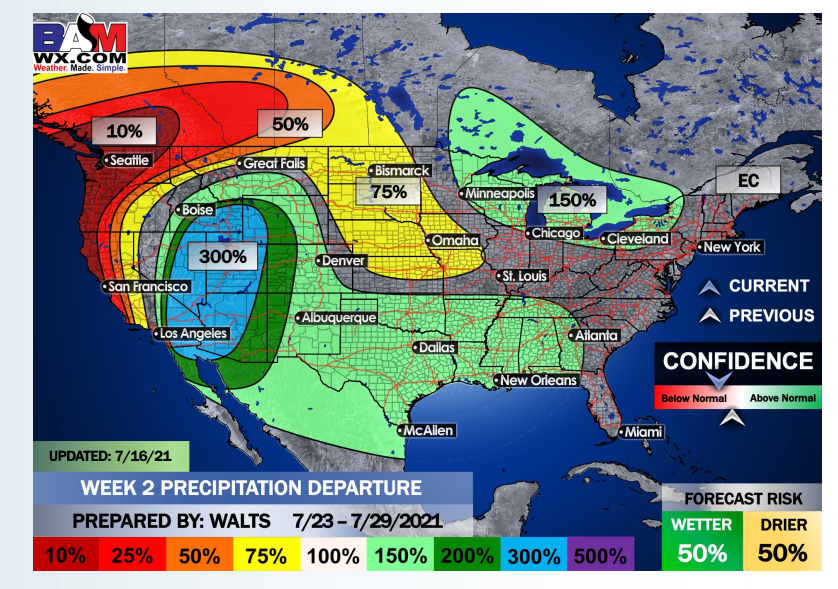
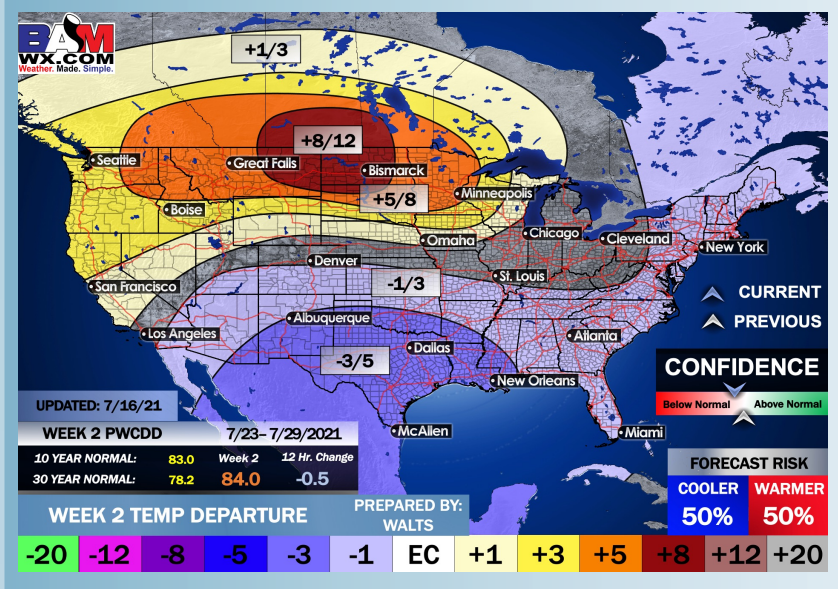
Long-Range Forecast Discussion

- Today will continue to feature spotty, hit and miss pockets of precipitation before Tue-Thu look to hold slightly better potential for more widespread rains. Temps will continue to sit near average to slightly below.
- The pattern ahead looks to continue in regards to precipitation from average in the week 2 period. Temperatures are anticipated to run below normal as well.
- The weeks 3/4 (late July into August essentially) period likely features more seasonable to cooler than normal temperatures, while precipitation looks to run at or above normal in this period as well.

Week 1 Forecast



Week 2 Forecast



Weeks 3/4 Forecast

