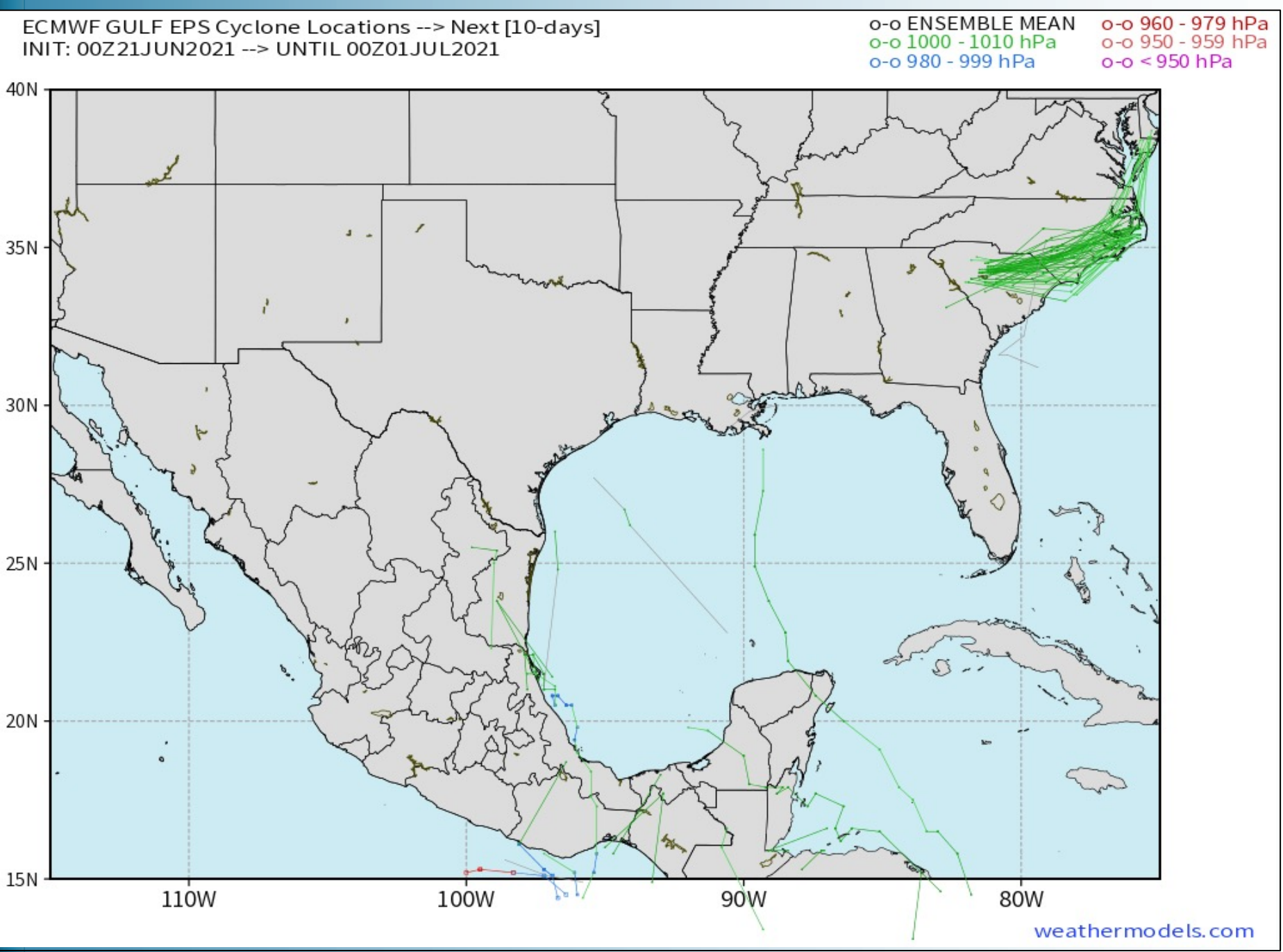


Updated: 4:35 AM CT, Monday, June 21, 2021

- **As always, please do not hesitate to reach out to us with any forecast questions via the chat option on the Weather Porthole or our on call number, **(317)-560-8122** press 1 for forecast questions.**

Tropical Update: *no immediate threats*



No immediate tropical threats to Houston over the next 10 days on our favored weather model guidance.



Visibility Report

Monday, June 21, 2021

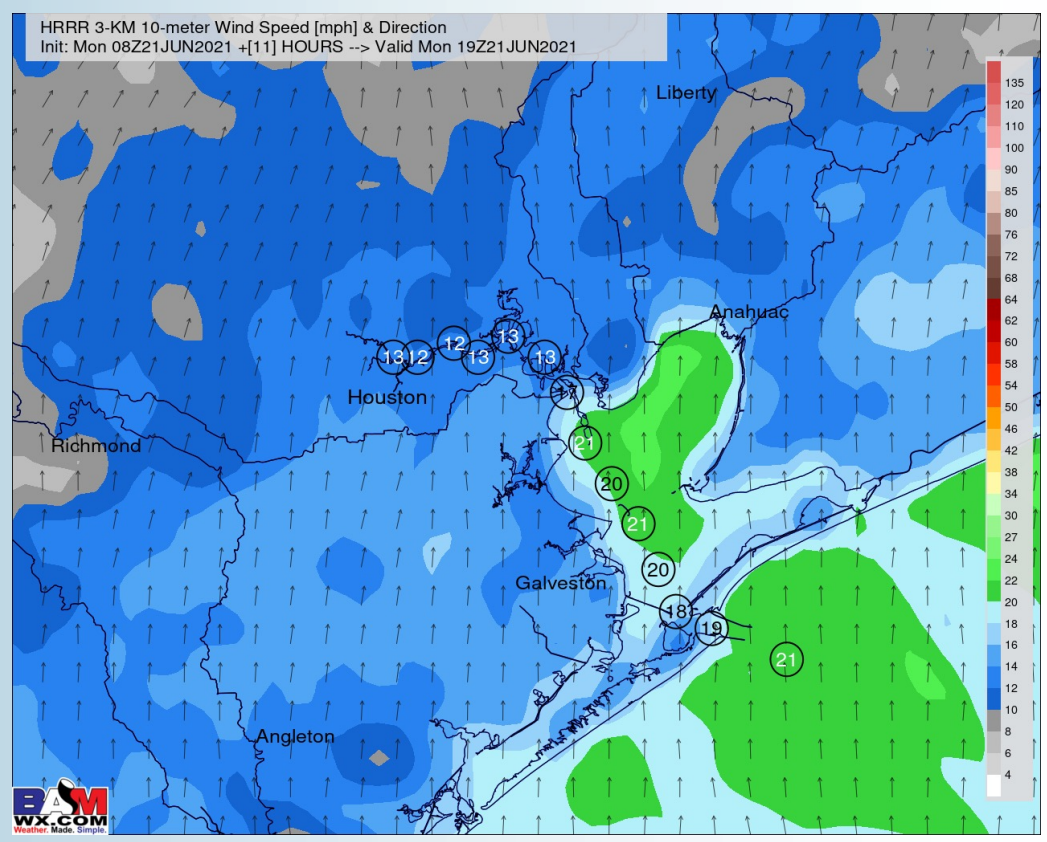
HOURLY VISIBILITY BREAKDOWN (in miles)

Time	06-21-2021 Mon 3am	06-21-2021 Mon 4am	06-21-2021 Mon 5am	06-21-2021 Mon 6am	06-21-2021 Mon 7am	06-21-2021 Mon 8am	06-21-2021 Mon 9am	06-21-2021 Mon 10am	06-21-2021 Mon 11am	06-21-2021 Mon 12pm	06-21-2021 Mon 1pm	06-21-2021 Mon 2pm	06-21-2021 Mon 3pm	06-21-2021 Mon 4pm	06-21-2021 Mon 5pm	06-21-2021 Mon 6pm	06-21-2021 Mon 7pm	06-21-2021 Mon 8pm	06-21-2021 Mon 9pm	06-21-2021 Mon 10pm	06-21-2021 Mon 11pm	06-22-2021 Tue 12am	06-22-2021 Tue 1am	06-22-2021 Tue 2am	06-22-2021 Tue 3am	06-22-2021 Tue 4am	06-22-2021 Tue 5am	06-22-2021 Tue 6am	06-22-2021 Tue 7am	06-22-2021 Tue 8am	06-22-2021 Tue 9am	06-22-2021 Tue 10am	06-22-2021 Tue 11am	06-22-2021 Tue 12pm	06-22-2021 Tue 1pm	06-22-2021 Tue 2pm
Houston Pilots N - 610 Bridge	6.995	6.025	4.684	6.605	6.574	5.554	6.480	8.193	8.751	8.444	7.127	6.123	5.152	5.566	6.631	6.338	5.450	5.291	6.594	5.873	4.280	5.077	5.661	5.918	7.741	6.613	8.578	7.430	7.215	7.787	7.411	9.010	9.309	6.291	7.737	7.412
Houston Pilots M - Kinder 1	6.995	6.025	4.684	6.540	6.116	6.023	6.909	8.193	8.751	8.444	8.886	6.123	5.152	5.566	6.631	6.076	5.450	5.291	6.439	5.873	5.562	5.077	5.661	6.089	7.741	6.613	8.588	7.430	7.404	6.500	7.411	9.010	9.309	6.291	7.737	7.412
Houston Pilots L - Greens Bayou	6.995	8.894	4.829	6.387	6.116	6.540	7.349	8.193	8.377	8.624	8.576	6.123	5.152	5.192	5.378	6.076	5.450	5.291	5.985	5.873	5.562	5.077	4.975	6.180	7.741	7.035	8.382	7.858	7.404	6.500	7.411	8.628	9.309	6.291	7.737	7.169
Houston Pilots K - Shell Crude	6.903	8.894	4.829	6.387	6.116	6.741	7.349	8.193	8.377	8.624	8.576	6.123	6.295	6.592	5.378	6.076	6.618	5.291	6.439	6.336	6.108	5.852	6.061	6.470	7.741	7.035	8.316	7.306	7.986	6.500	7.411	8.424	9.524	6.291	7.737	7.169
Houston Pilots J - Lynchburg Ferries	6.903	8.894	4.976	6.387	6.116	6.741	7.931	8.224	8.377	10.00	7.490	8.361	6.295	5.192	5.378	6.076	6.618	5.291	5.167	4.511	6.114	5.852	6.406	6.377	7.741	7.143	8.060	6.908	8.172	6.500	7.411	8.368	9.524	6.291	7.737	7.169
Houston Pilots I - Exxon 3	6.903	8.894	5.798	6.387	6.116	6.741	9.513	8.224	8.377	10.00	7.490	8.361	7.248	6.599	5.378	6.587	7.094	5.291	6.160	6.499	6.357	5.236	6.083	6.470	7.015	7.143	8.060	6.908	6.252	7.579	8.472	8.013	9.244	10.00	7.737	7.169
Houston Pilots H - Morgans Point	6.903	8.894	6.222	6.387	6.116	6.741	9.249	6.473	9.214	9.197	8.576	8.361	7.248	6.599	5.378	6.622	8.485	6.794	6.160	6.499	6.357	5.236	6.083	6.256	6.777	6.524	7.272	6.439	6.252	7.640	5.785	8.013	9.196	10.00	8.115	7.169
Houston Pilots G - 75/76	6.903	8.906	7.816	6.710	7.073	7.092	8.856	6.473	9.679	9.081	7.821	8.361	7.360	6.599	5.378	7.336	9.410	6.794	7.231	7.472	7.454	5.236	5.250	4.898	6.639	5.548	7.272	6.239	6.252	7.428	4.671	5.757	9.196	9.836	10.00	7.169
Houston Pilots F - 63/64	8.055	8.239	8.585	7.100	8.092	9.025	8.856	8.473	9.679	6.752	7.437	7.373	8.032	6.784	5.431	8.253	9.517	8.427	7.580	6.496	7.653	6.564	5.250	4.473	6.163	5.548	7.272	4.377	6.379	7.194	4.671	5.757	9.196	9.836	10.00	8.745
Houston Pilots E - 51/52	8.079	8.239	9.385	7.100	9.911	8.672	8.856	7.495	8.282	6.237	7.234	7.373	5.287	7.507	5.431	9.389	10.00	8.427	7.580	6.496	7.653	7.362	5.250	4.473	6.163	5.468	7.272	4.377	6.379	7.194	5.198	5.757	9.196	9.836	10.00	8.745
Houston Pilots D - 37/38	9.145	8.239	9.251	8.169	9.911	8.287	8.856	7.495	8.282	6.237	7.234	6.960	5.287	7.507	7.594	9.389	10.00	8.427	7.580	5.839	7.312	7.362	7.128	4.623	6.163	5.020	5.495	4.377	6.461	5.436	5.255	5.757	9.197	10.00	10.00	10.00
Houston Pilots C - 25/26	10.00	9.525	9.607	10.00	9.013	8.672	10.00	9.611	8.282	6.237	7.234	6.922	5.287	7.507	10.00	9.389	10.00	8.427	7.293	5.839	7.809	7.758	7.128	4.851	5.814	5.020	5.495	4.377	6.461	5.273	5.255	5.954	9.271	10.00	10.00	10.00
Houston Pilots B - 11/12	10.00	9.852	10.00	10.00	9.013	9.130	10.00	9.611	8.282	6.237	7.512	6.922	5.287	7.507	10.00	10.00	8.359	7.547	7.293	5.839	6.717	7.758	7.128	4.851	5.656	5.020	5.495	4.377	6.615	5.273	5.255	7.532	9.271	10.00	10.00	10.00
Houston Pilots A - 1 & 2 Bravo	8.439	9.518	10.00	8.893	9.480	9.130	10.00	10.00	10.00	7.403	7.577	7.011	5.689	7.565	9.924	10.00	8.359	7.547	7.293	6.420	6.717	7.135	7.242	6.157	5.656	5.020	6.157	4.707	6.322	8.519	5.255	6.683	9.271	10.00	10.00	8.648

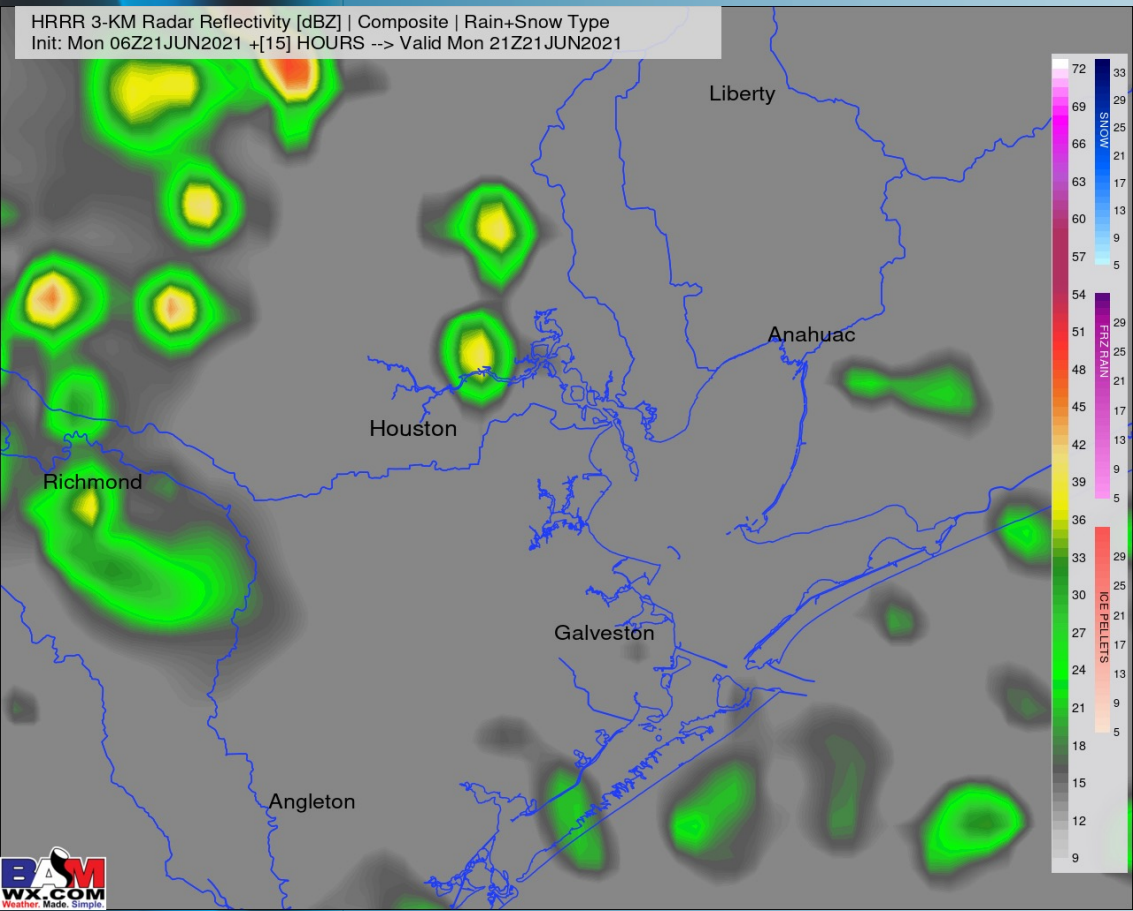
Short-Term Forecast Discussion

- Today offers scattered chances throughout the day, starting mainly late morning through the evening. Data has overall backed off on bigger coverage across the Bay, mainly focused north and west towards the Metro today. Locally heavy downpours, gusty winds and briefly reduced visibility will be possible under these storms overhead.
- Winds continue to remain elevated this morning into the afternoon sustained around 10 – 20 MPH out of the south with gusts near 25 MPH possible (stronger under storms). Winds slowly start to weaken into this evening.
- Temperatures look to get into the mid 80's F over open waters today.
- *No fog anticipated for tonight.*

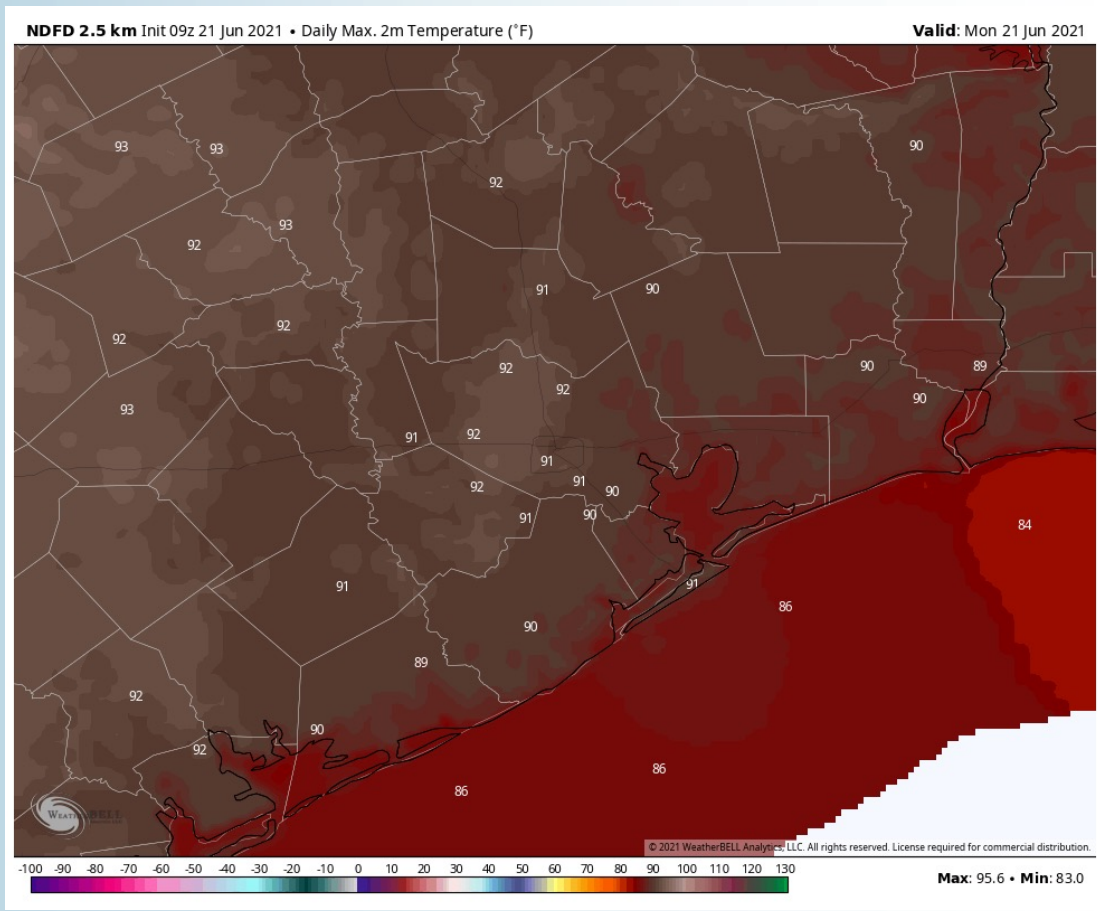
Sustained Winds (2 PM CT)



Simulated Radar Snapshot (4 PM CT)



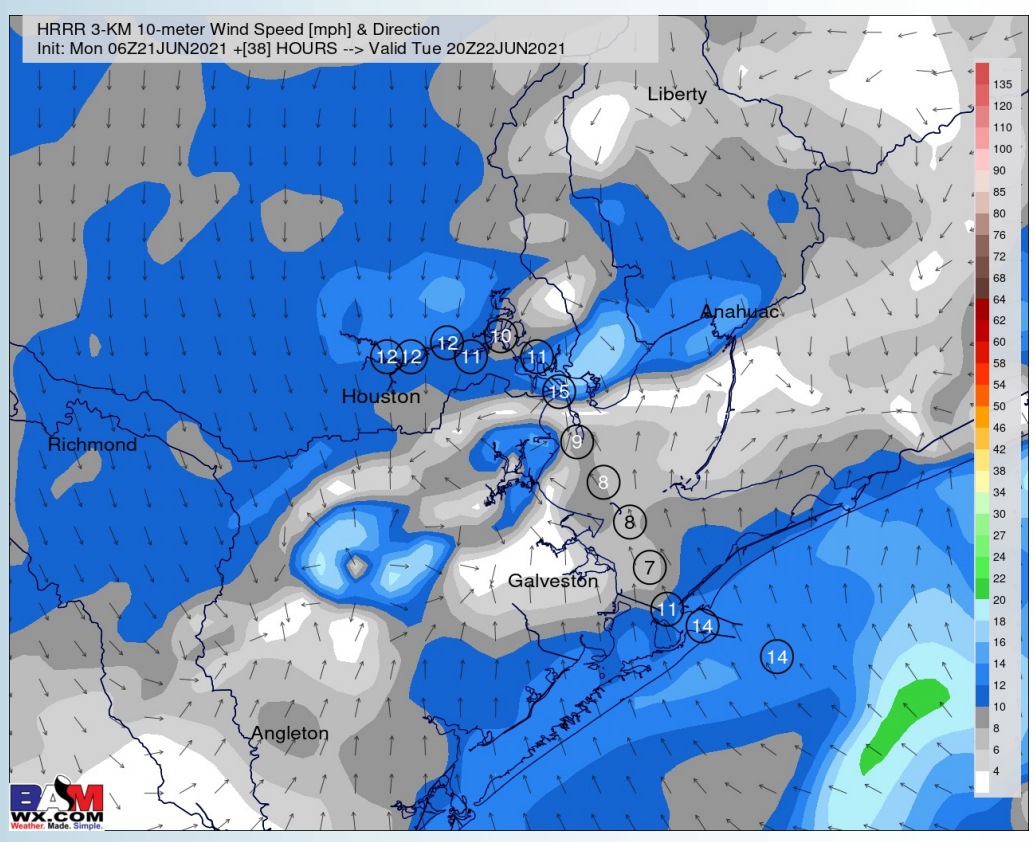
High Temperatures Today



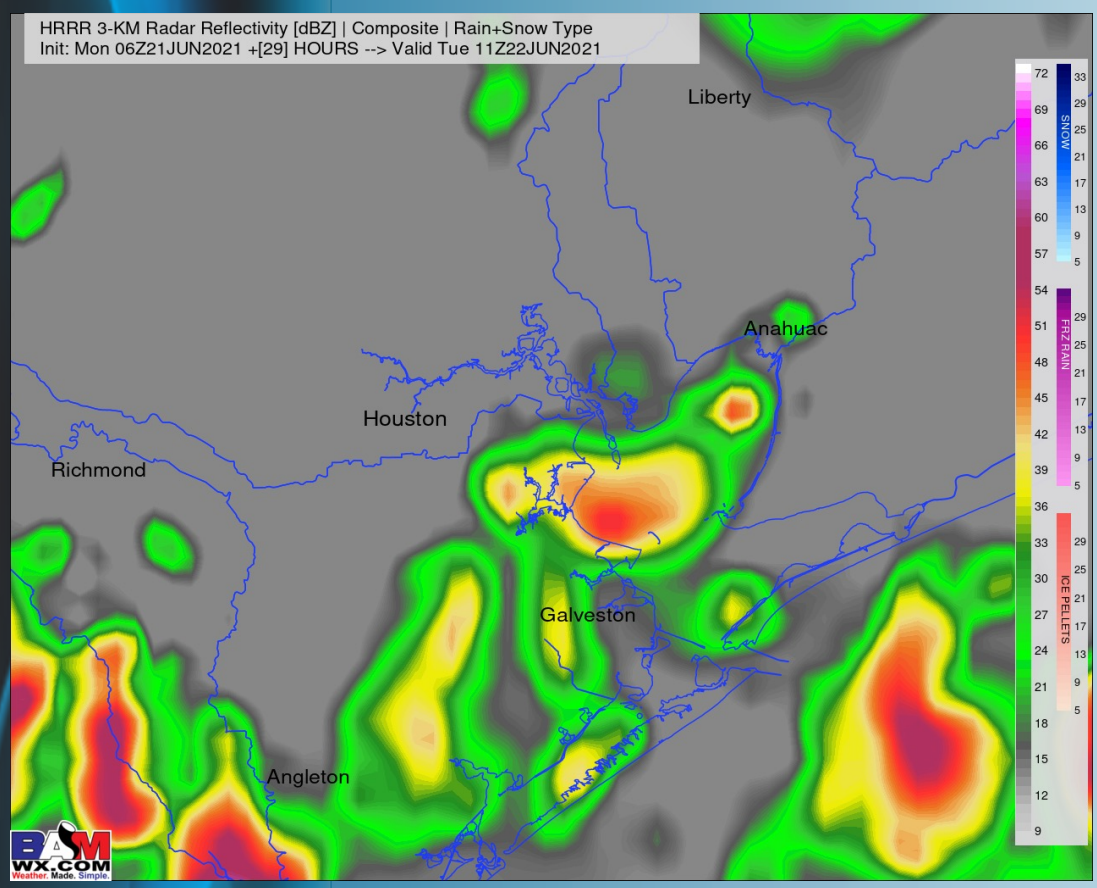
Short-Term Forecast Discussion

- Showers/ storms are likely especially after midnight tonight through TUE daybreak (locally heavy downpours with reduced vis, and gusty winds possible), with chances lessening later in the morning to the PM hours tomorrow.
- Winds are anticipated to be on the calmer side of things on TUE with winds out of the SE sustained around 5 – 10 MPH.
- High temperatures once again expected to get into the mid 80's F over open waters on TUE.
 - *No fog is favored Tuesday.*

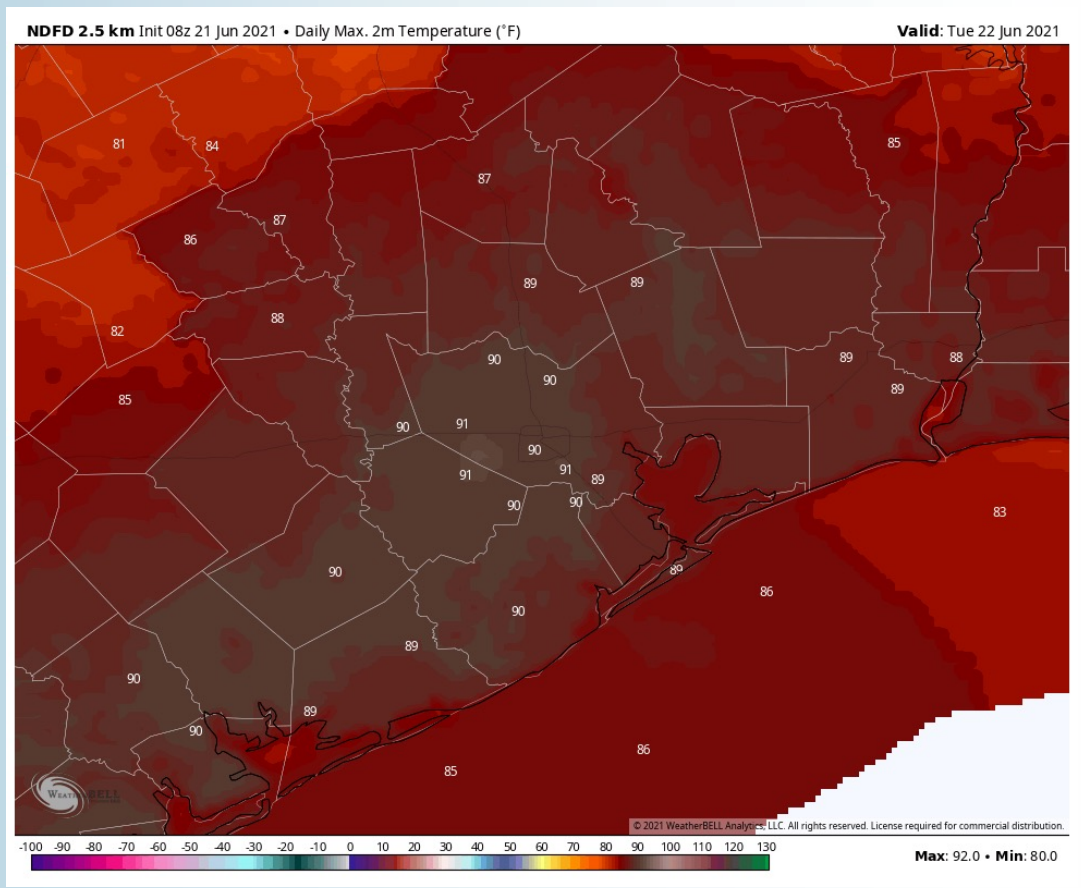
Sustained Winds (4 PM CT)



Simulated Radar Snapshot (6 AM CT)



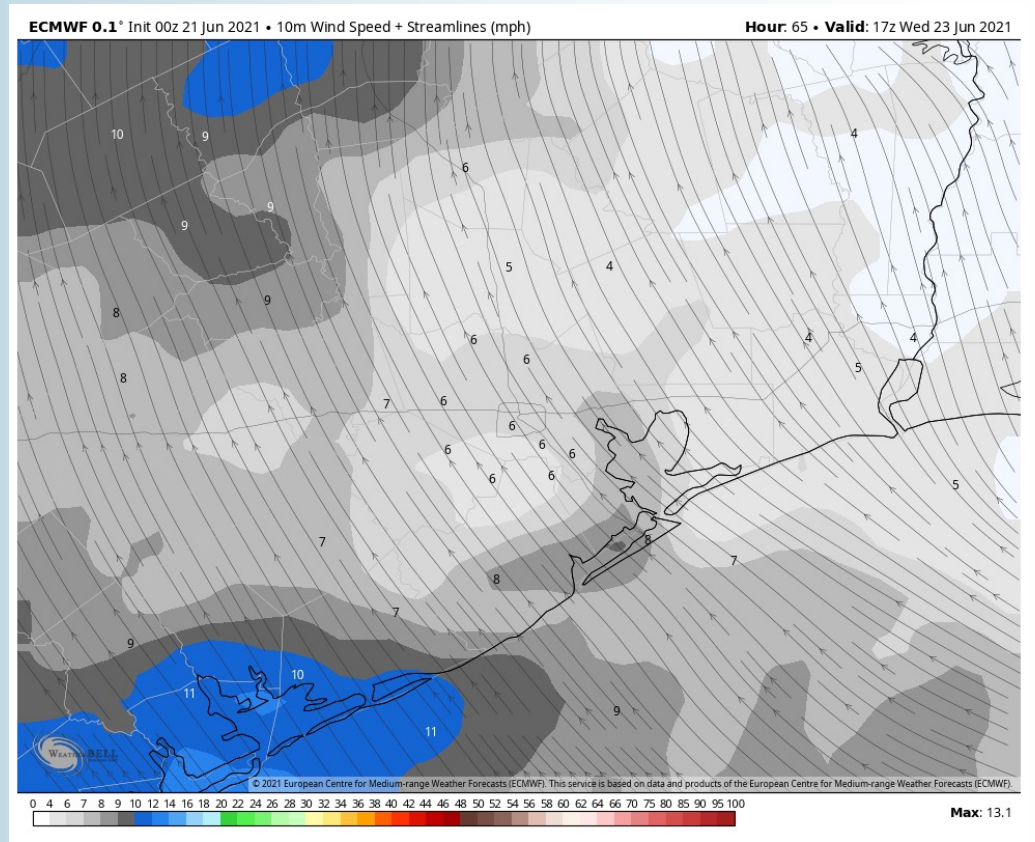
High Temperatures TUE



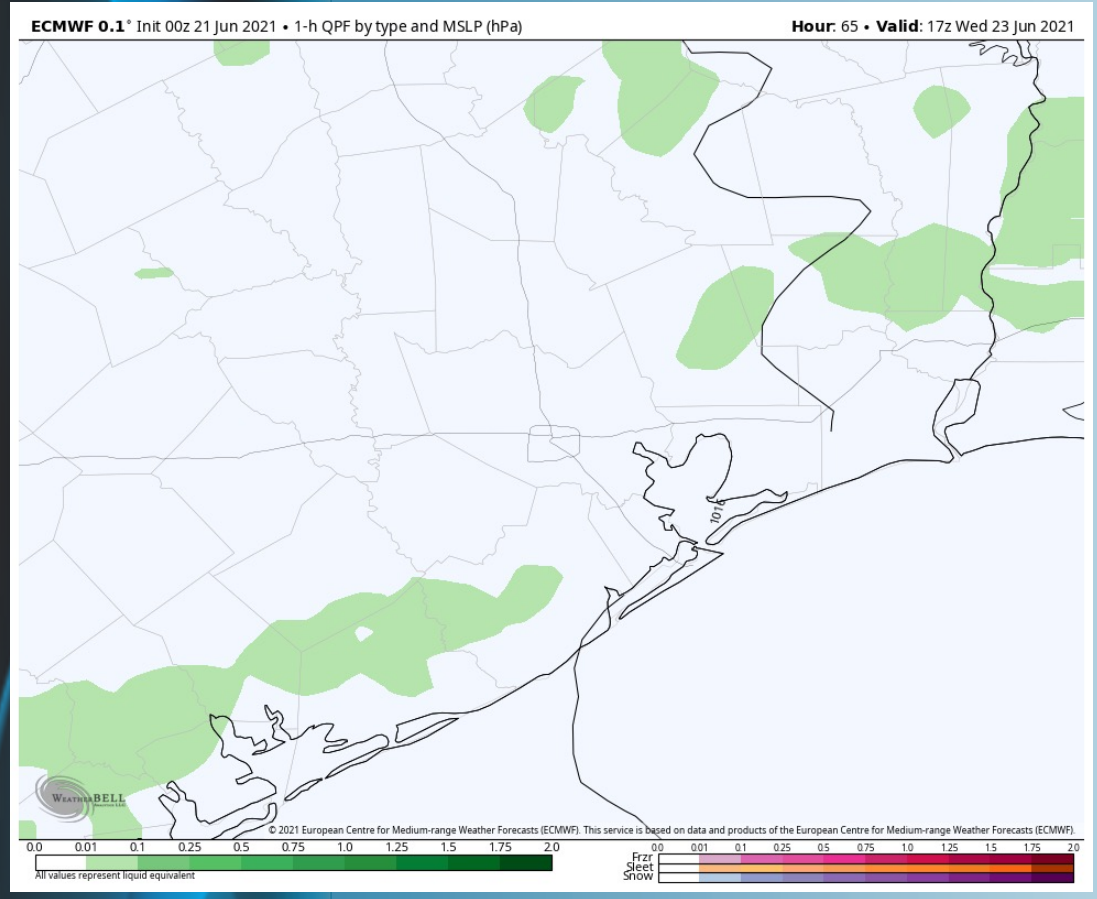
Short-Term Forecast Discussion

- **At this distance, we are thinking coverage of precipitation on Wednesday looks quite a bit lower vs Monday and Tuesday...favoring mostly dry conditions and warming up as well a bit. No immediate big weather concerns here.**
- **Winds are anticipated to be on the calmer side of things on WED again, with winds out of the SE sustained around 5 – 10 MPH.**
- **High temperatures once again expected to get into the mid to upper 80's F over open waters on WED.**
- ***No fog is favored Wednesday.***

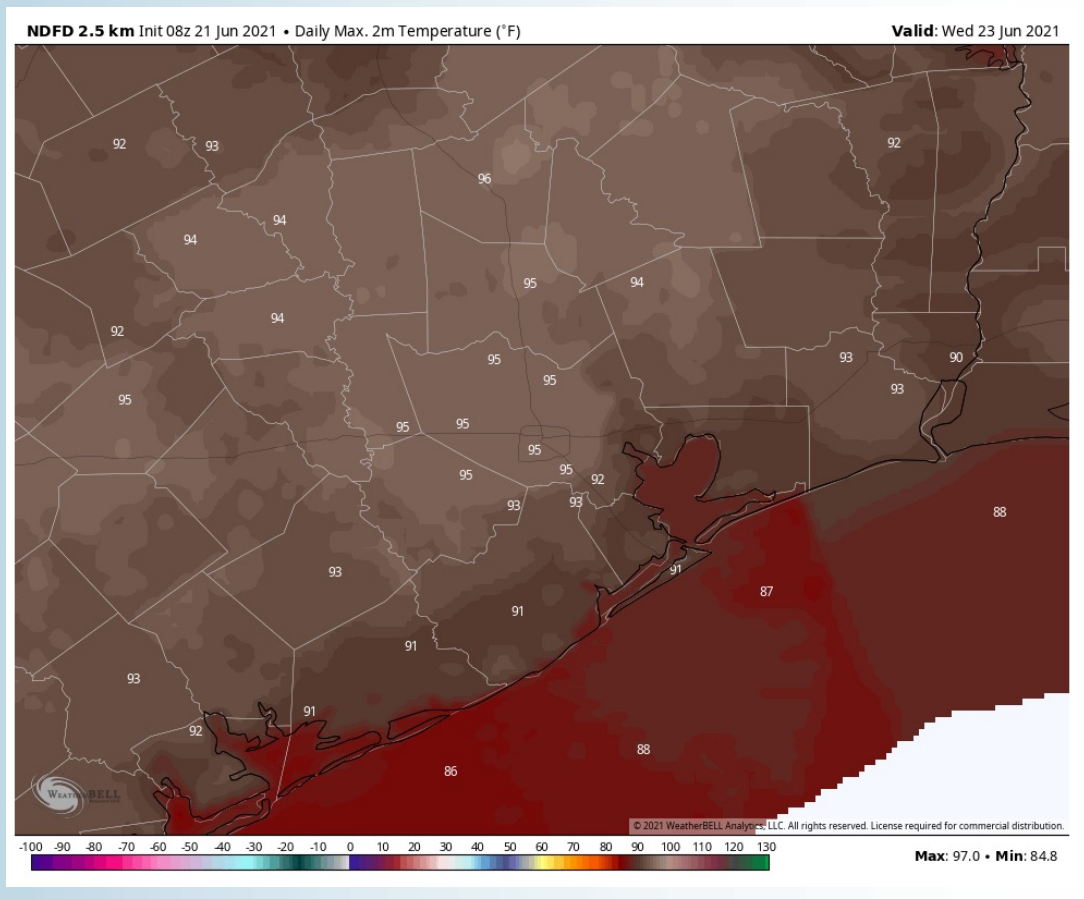
Sustained Winds (12 PM CT)



Simulated Radar Snapshot (12 PM CT)



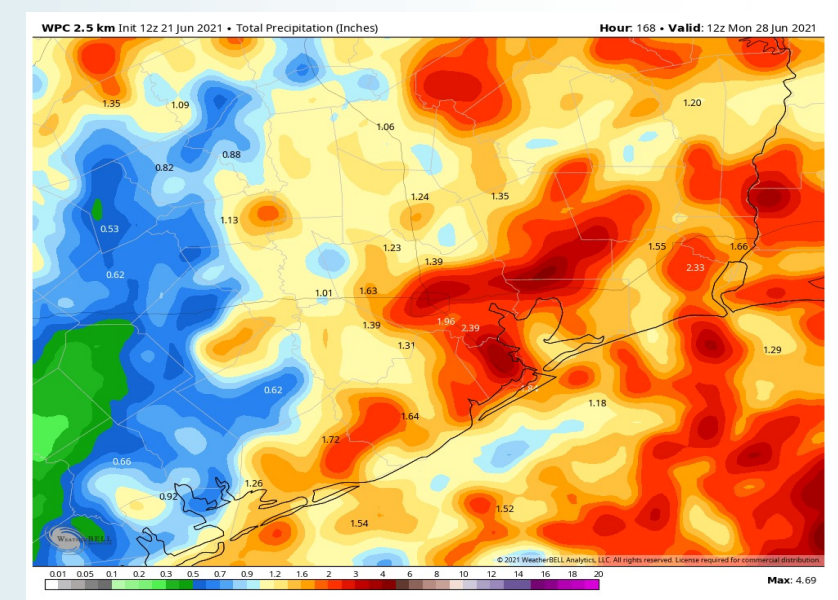
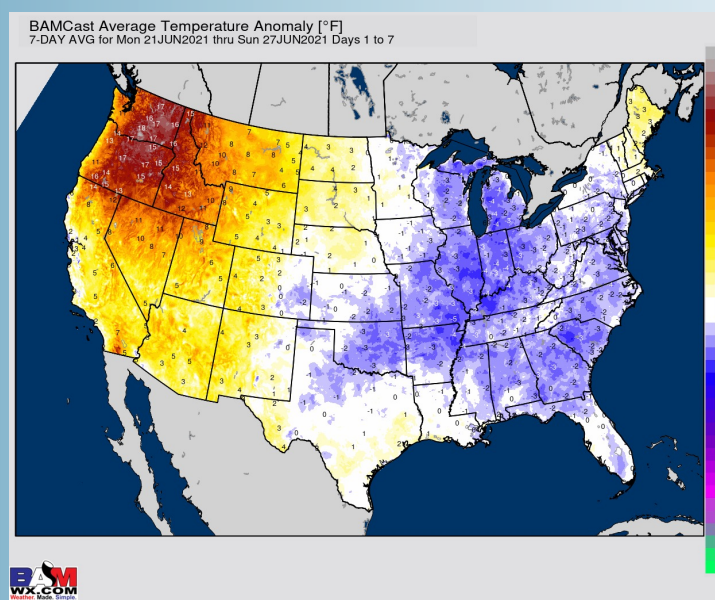
High Temperatures WED



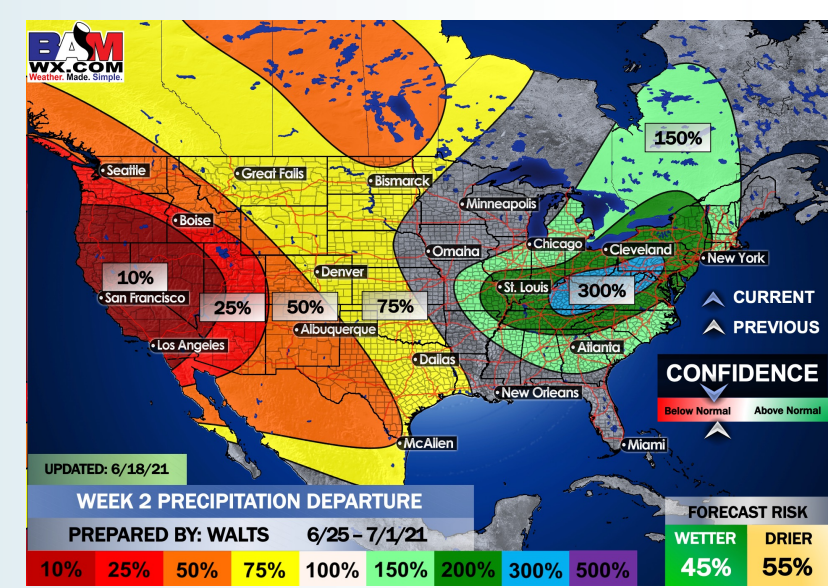
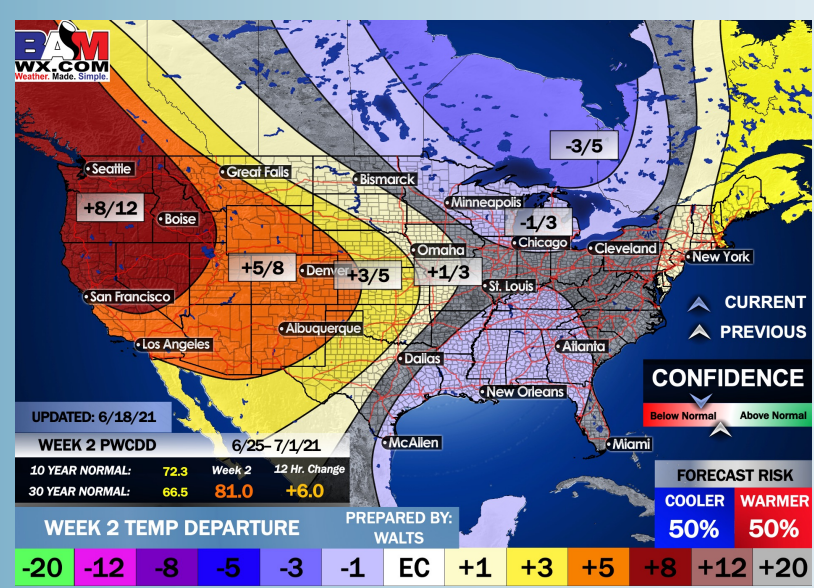
Long-Range Forecast Discussion

- Temperatures look to run at/ slightly above normal the next 7 days. In regards to precipitation, we favor a more active first half of the week vs the second half...with daily rain chances present.
- Week 2 is anticipated to trend drier vs previous wetter weeks across the area, while temps look to stay about normal to slightly cooler here into late June.
- The weeks 3/4 (1st half of July) period likely features more seasonable to cooler than normal temperatures, while precipitation looks to return back to above normal in this period as well.

Week 1 Forecast



Week 2 Forecast



Weeks 3/4 Forecast

