

**Updated: 12:00 PM CT, Sunday, June 20, 2021**

- **As always, please do not hesitate to reach out to us with any forecast questions via the chat option on the Weather Porthole or our on call number, **(317)-560-8122** press 1 for forecast questions.**



# Visibility Report

## Sunday, June 20, 2021

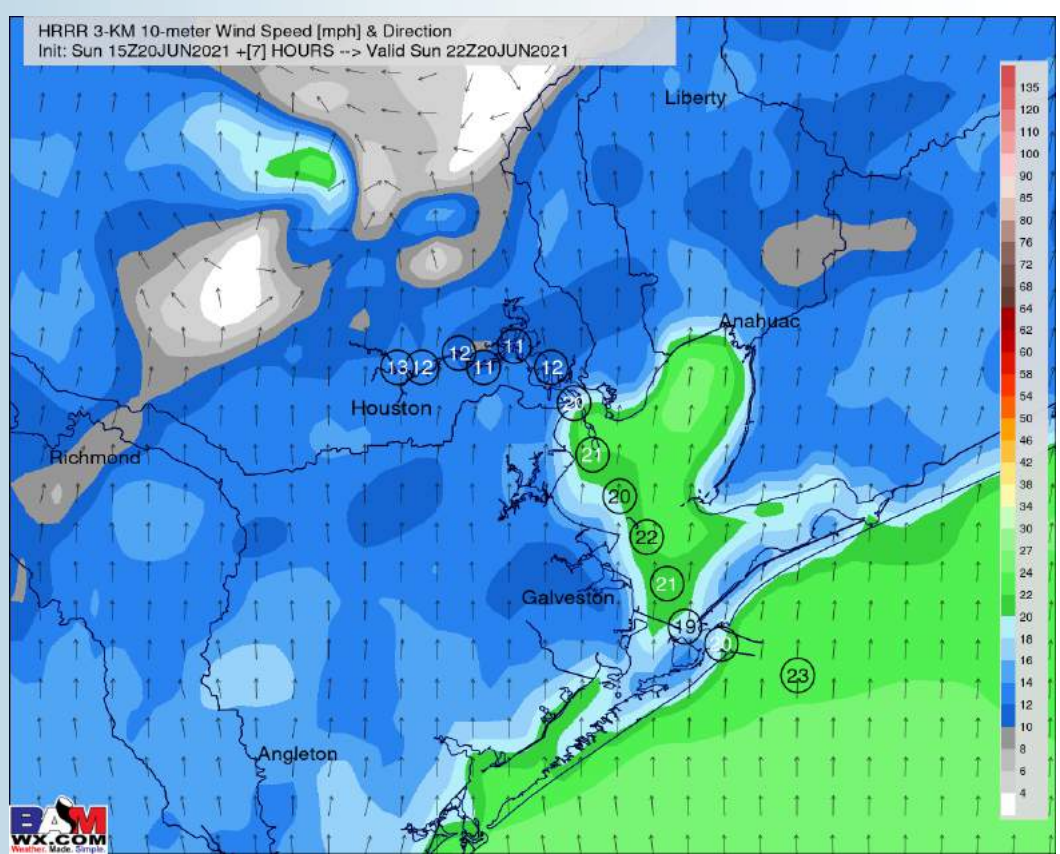
# HOURLY VISIBILITY BREAKDOWN (in miles)

Time	06-20-2021 Sun 11am	06-20-2021 Sun 12pm	06-20-2021 Sun 1pm	06-20-2021 Sun 2pm	06-20-2021 Sun 3pm	06-20-2021 Sun 4pm	06-20-2021 Sun 5pm	06-20-2021 Sun 6pm	06-20-2021 Sun 7pm	06-20-2021 Sun 8pm	06-20-2021 Sun 9pm	06-20-2021 Sun 10pm	06-20-2021 Sun 11pm	06-21-2021 Mon 12am	06-21-2021 Mon 1am	06-21-2021 Mon 2am	06-21-2021 Mon 3am	06-21-2021 Mon 4am	06-21-2021 Mon 5am	06-21-2021 Mon 6am	06-21-2021 Mon 7am	06-21-2021 Mon 8am	06-21-2021 Mon 9am	06-21-2021 Mon 10am	06-21-2021 Mon 11am	06-21-2021 Mon 12pm	06-21-2021 Mon 1pm	06-21-2021 Mon 2pm	06-21-2021 Mon 3pm	06-21-2021 Mon 4pm	06-21-2021 Mon 5pm	06-21-2021 Mon 6pm	06-21-2021 Mon 7pm
Houston Pilots - 610 Bridge	9.003	5.482	0.716	6.102	2.255	5.282	4.254	6.851	7.476	5.851	7.494	7.371	7.177	6.623	6.636	8.437	7.654	5.704	4.724	5.427	4.917	6.685	5.792	5.904	5.401	5.443	8.158	6.632	4.863	3.667	6.173	7.098	8.749
Houston Pilots M - Kinder 1	9.003	6.972	0.858	6.102	2.255	6.113	4.254	6.000	7.476	5.851	7.494	7.371	7.177	6.623	7.258	8.437	7.654	5.704	4.724	5.427	6.309	5.429	6.203	5.904	5.801	5.443	9.112	6.632	4.863	3.667	4.818	7.098	8.613
Houston Pilots L - Greens Bayou	9.003	10.00	0.858	6.291	2.255	6.113	4.254	6.000	7.476	5.851	6.612	6.052	7.177	6.404	7.954	8.437	7.654	5.704	4.724	5.890	6.344	5.429	6.203	5.904	6.396	6.746	7.162	6.632	5.666	3.667	4.368	7.098	8.613
Houston Pilots - Shell Crude	9.003	10.00	2.381	6.291	2.255	6.113	4.254	5.994	7.476	5.851	7.494	7.371	7.177	6.404	8.076	8.437	7.654	5.704	4.724	5.668	7.161	5.429	6.203	5.904	6.451	6.746	8.660	6.632	5.666	5.061	4.368	7.098	8.613
Houston Pilots - Lynchburg Ferries	8.778	10.00	5.550	5.081	2.255	6.113	4.254	5.968	8.190	7.026	7.494	7.470	6.311	6.178	7.509	8.290	7.654	5.704	4.724	5.668	7.251	5.429	6.742	6.528	6.451	6.746	7.510	7.930	5.666	5.256	4.368	7.098	7.446
Houston Pilots I - Exxon 3	10.00	6.955	8.616	8.394	6.573	6.828	5.510	5.968	5.240	7.026	7.494	7.317	4.798	6.404	6.864	8.217	7.654	5.420	6.091	5.668	7.426	5.429	7.077	6.528	2.617	8.191	8.650	7.930	5.994	4.426	4.368	7.151	7.446
Houston Pilots H - Morgans Point	10.00	6.955	8.616	4.742	6.573	6.231	4.692	5.994	4.978	7.026	7.494	7.317	3.914	6.404	6.864	7.602	7.262	4.985	6.989	5.890	7.426	5.429	7.077	6.528	2.590	7.808	8.660	7.930	5.994	4.426	4.368	7.270	7.213
Houston Pilots G - 75/76	8.948	6.955	9.290	4.742	6.573	6.231	4.692	6.580	4.538	6.617	8.290	5.786	3.914	6.721	7.240	7.347	6.455	5.420	7.506	6.590	7.907	6.883	7.077	5.701	2.590	7.132	7.683	7.930	6.461	4.426	4.368	5.962	7.094
Houston Pilots F - 63/64	8.948	6.955	9.290	8.339	6.573	1.314	4.692	6.787	3.695	4.667	8.149	5.786	4.481	6.871	5.590	7.347	6.210	5.614	7.506	6.508	7.384	7.460	8.504	5.705	2.590	6.488	7.683	6.980	6.534	6.366	6.325	5.962	7.094
Houston Pilots E - 51/52	7.369	7.003	9.290	10.00	6.573	0.629	4.692	6.940	1.556	3.908	7.330	5.786	4.808	6.871	5.590	7.347	6.682	5.614	7.718	6.054	7.384	7.460	8.504	6.312	2.590	6.488	7.822	6.477	5.111	5.711	3.177	5.962	7.242
Houston Pilots D - 37/38	7.369	7.898	10.00	10.00	8.214	0.629	5.182	6.940	1.556	3.908	6.880	5.786	5.479	7.442	5.590	7.415	5.836	5.614	7.039	6.054	7.384	7.460	8.504	6.922	4.889	6.151	7.822	4.999	5.111	4.965	3.177	6.946	6.466
Houston Pilots C - 25/26	7.369	8.719	10.00	10.00	8.951	0.629	5.966	6.971	1.556	3.907	6.880	5.967	7.119	6.594	5.792	7.415	6.338	6.676	7.025	6.054	7.778	7.460	8.696	7.505	6.148	6.151	8.115	3.551	5.111	4.965	3.177	6.946	6.392
Houston Pilots B - 11/12	7.369	8.719	8.676	10.00	9.103	0.629	5.966	6.971	1.556	3.907	7.249	5.967	7.119	6.594	5.135	5.327	6.338	7.921	7.025	6.054	8.971	7.288	8.696	8.380	6.148	6.151	8.166	3.551	5.071	4.965	3.177	6.078	6.392
Houston Pilots - 1 & 2 Bravo	7.812	8.404	7.944	7.724	7.954	5.053	5.966	7.424	2.285	3.907	6.791	6.226	6.512	5.455	3.551	2.092	5.100	6.758	8.123	7.658	8.910	7.273	9.187	10.00	9.212	3.821	6.241	3.551	5.071	4.965	8.556	6.078	7.409

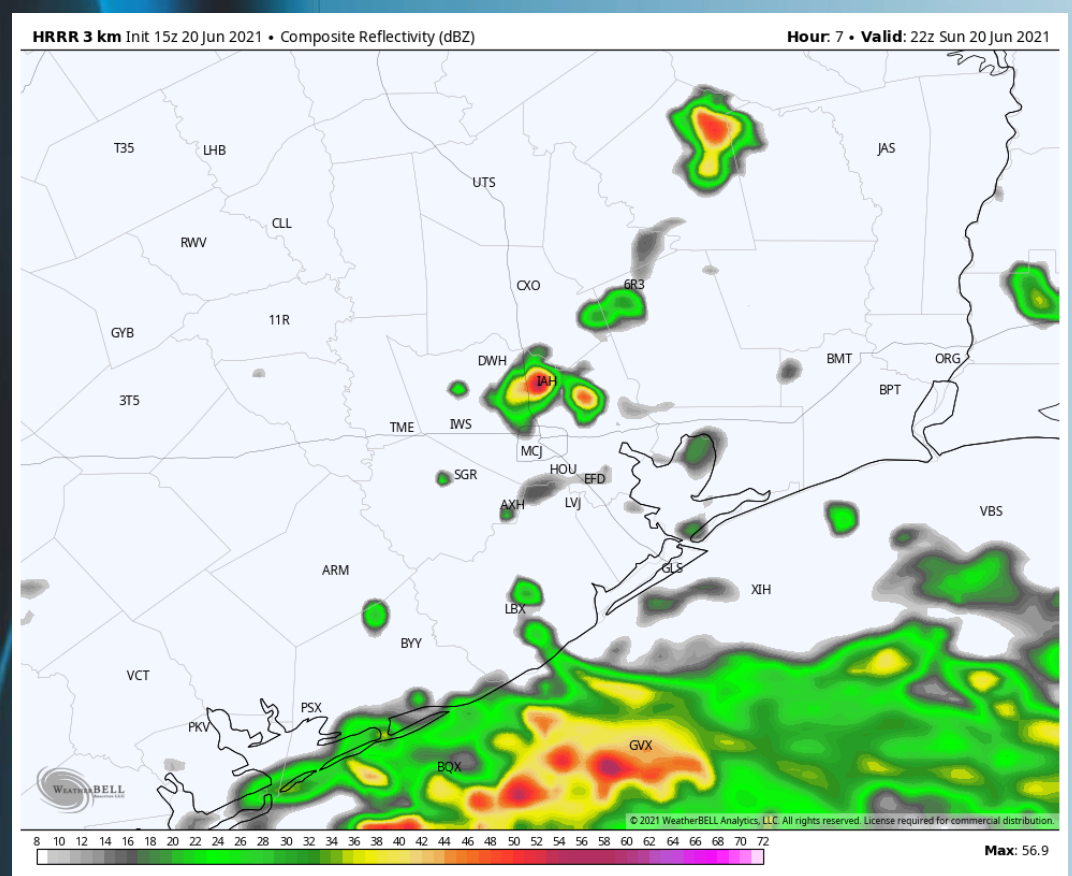
## Short-Term Forecast Discussion

- Scattered showers and thunderstorms continue to remain possible throughout the day/ night. Locally heavy downpours and gusty conditions possible under storms.
  - Winds look to continue to pick up into the afternoon hours remaining from the south. Latest hi-res data indicating sustained winds of 15 – 25 MPH will be possible for station near the boarding station with weaker winds into the Buffalo Bayou. Gust around 30 MPH will be possible with possibly stronger under any storms.
  - Low temperatures into tomorrow morning remain quite mild, staying into the lower to mid 80's F over open waters.
- *No fog anticipated Sunday.*

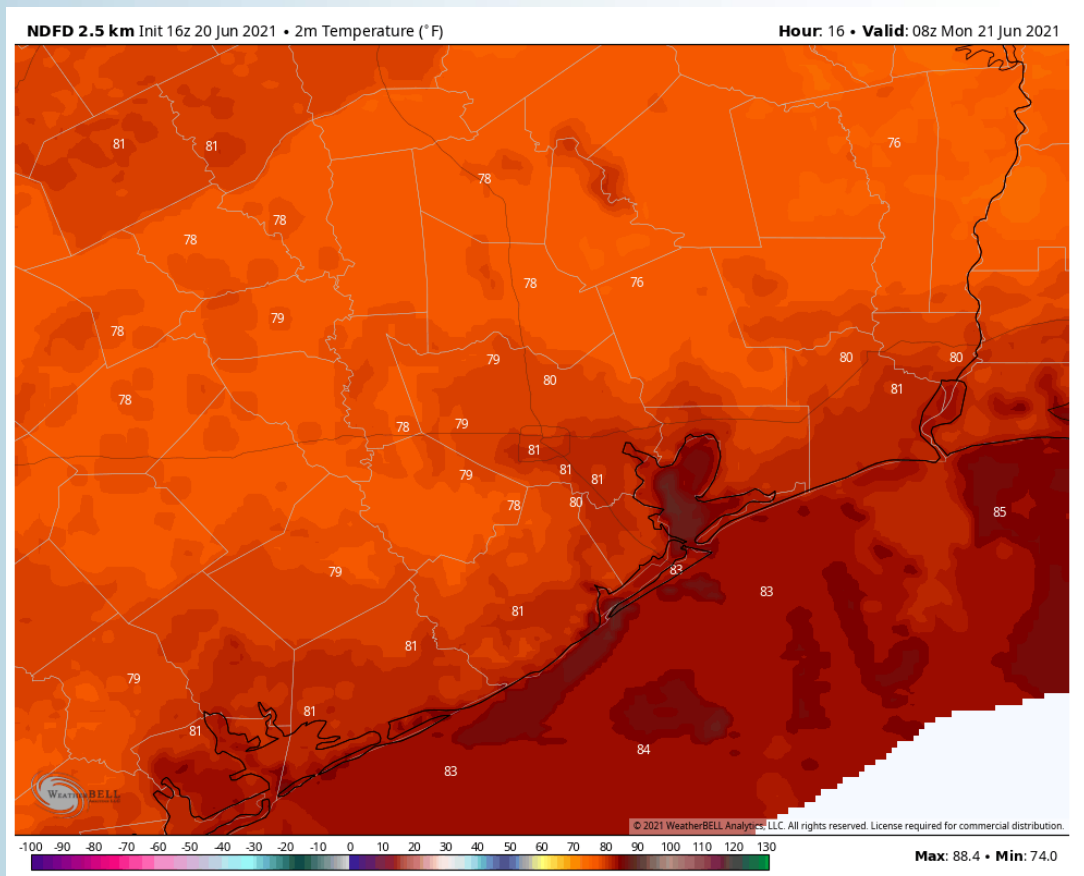
## Sustained Winds (5 PM CT)



## Simulated Radar Snapshot (5 PM CT)



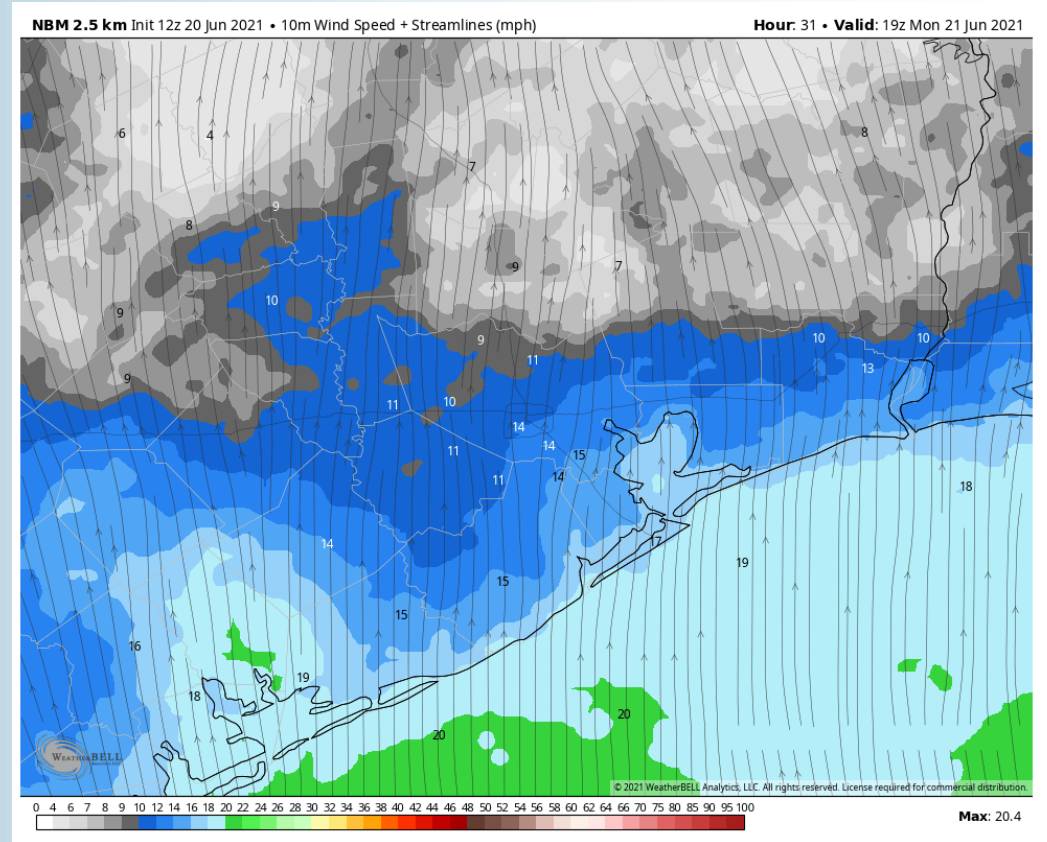
## High Temperatures Sunday



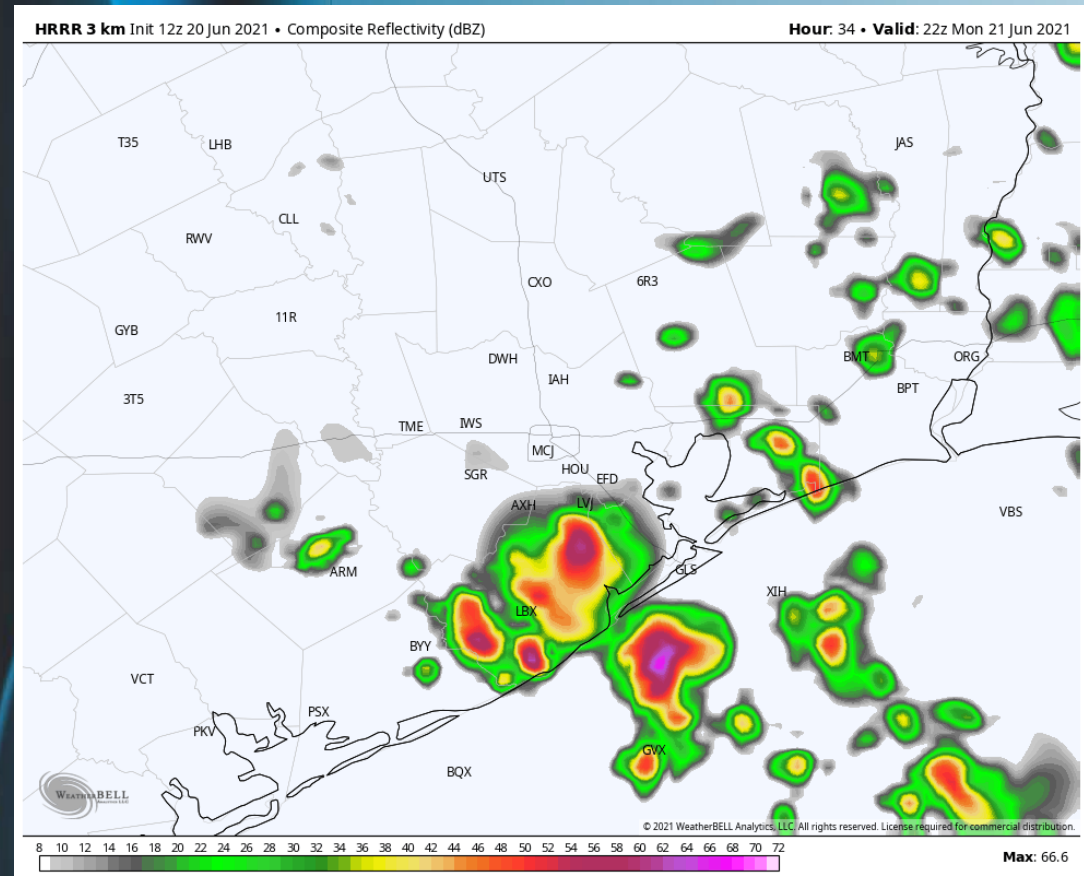
## Short-Term Forecast Discussion

- Monday offers scattered chances throughout the day as well. Storms on Monday will once again offer up heavy downpours and gusty conditions, especially into the afternoon.
- Winds likely continue to remain elevated on Monday morning into the afternoon sustained around 10 – 20 MPH out of the south with gusts near 25 MPH possible (stronger under storms). Winds slowly start to weaken into the evening.
- Temperatures look to get into the upper 80's F to lower 90's F over open waters.
  - *No fog anticipated for Monday.*

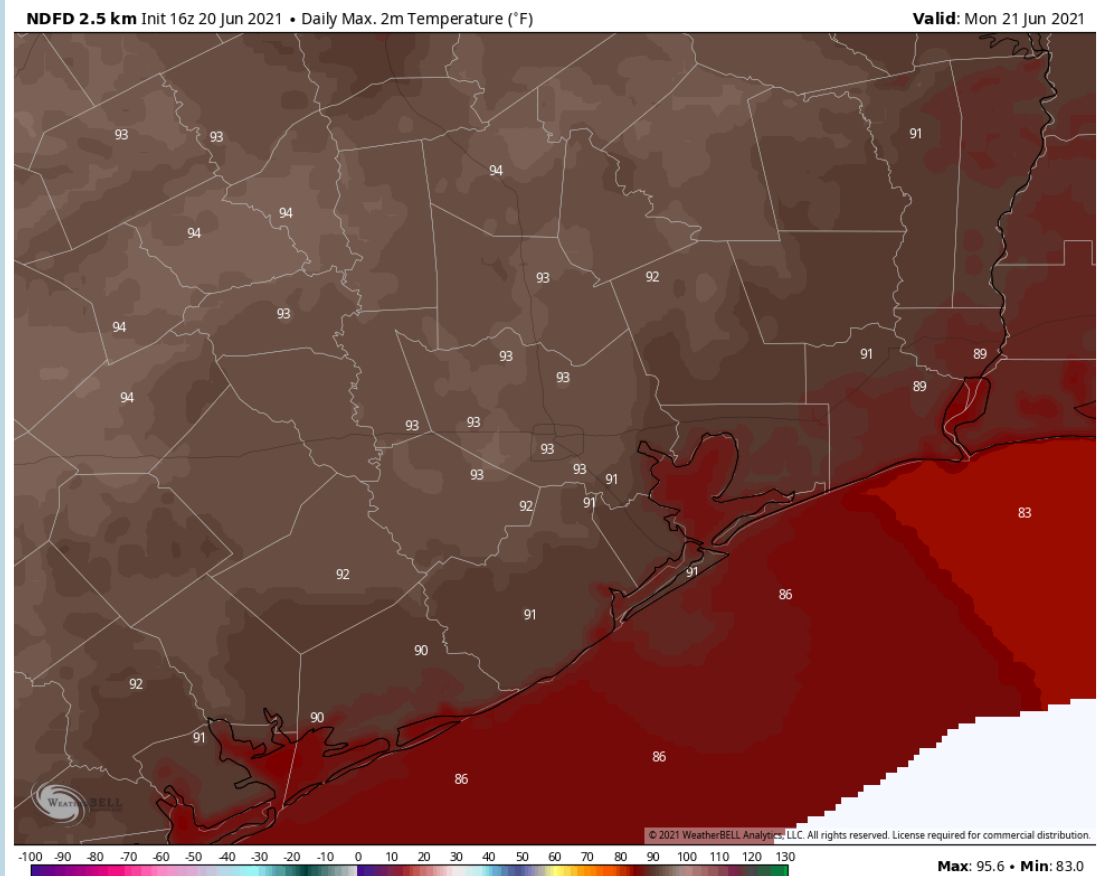
## Sustained Winds (2 PM CT)



## Simulated Radar Snapshot (5 PM CT)



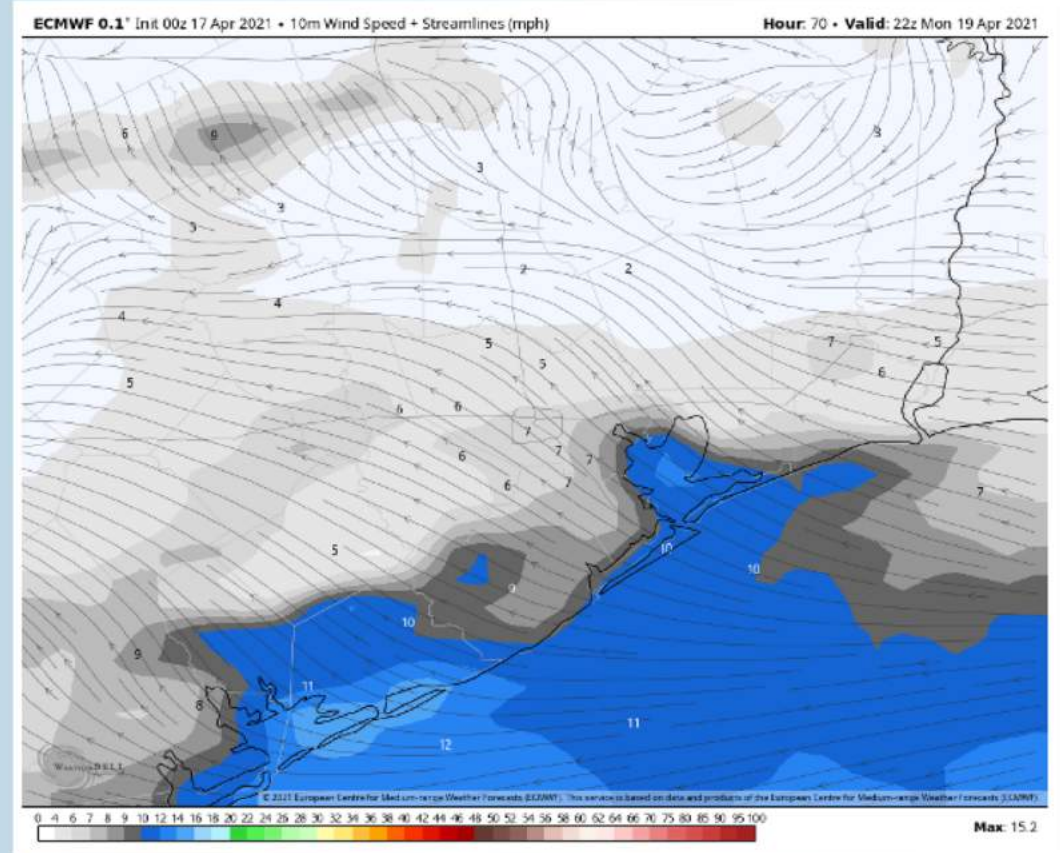
## High Temperatures Monday



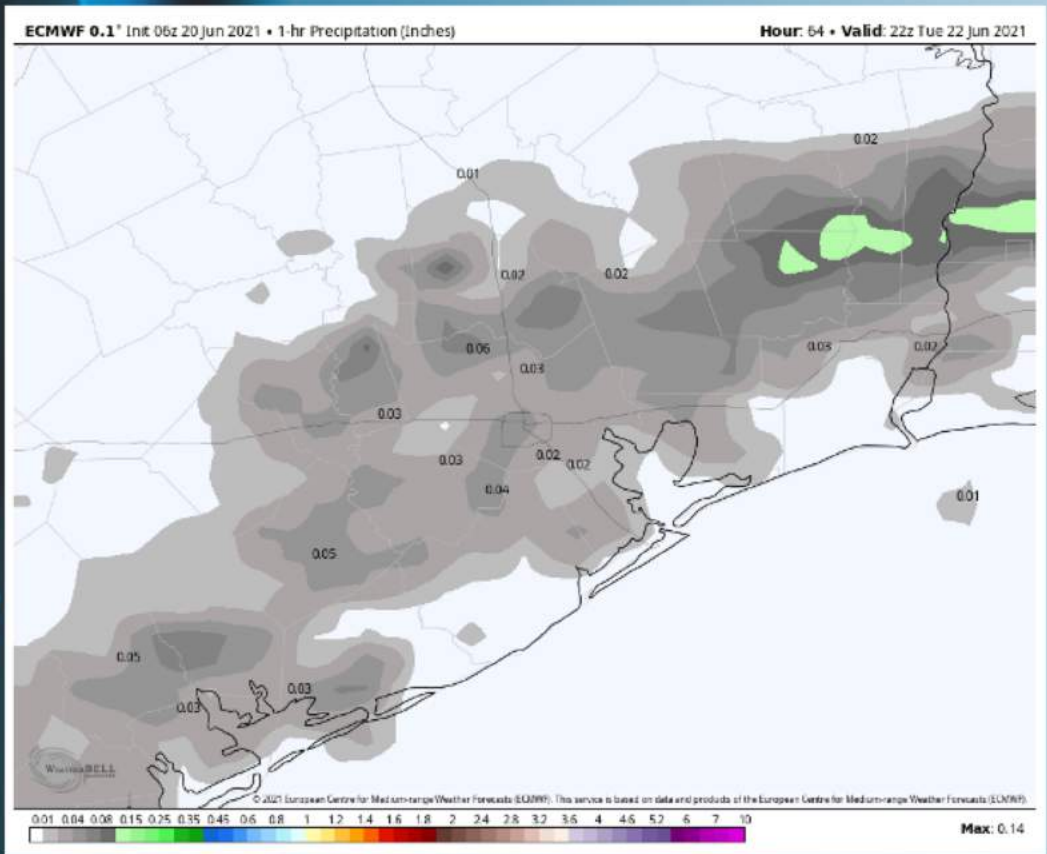
## Short-Term Forecast Discussion

- **Storms/showers are likely TUE morning, with scattered chances once again TUE afternoon.**
- **Winds are anticipated to be relatively calm (5 – 15MPH) throughout the day, with stronger wind gusts possible under any storms.**
- **High temperatures are expected to be in the upper 80's F to lower 90's F over open waters on TUE.**
- ***Fog is not favored for Tuesday.***

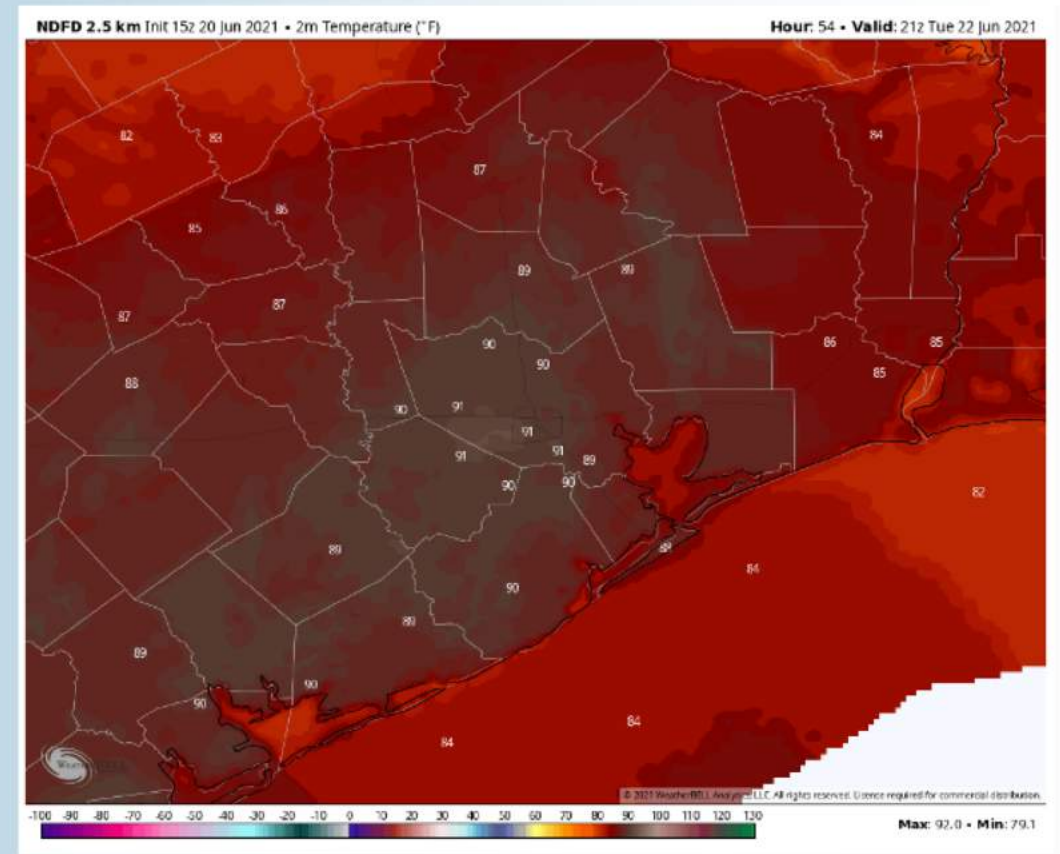
## Sustained Winds (4 PM CT)



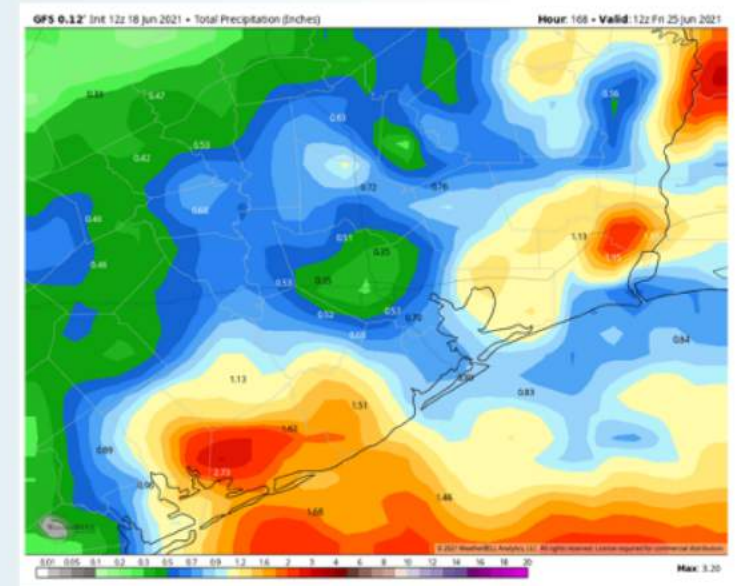
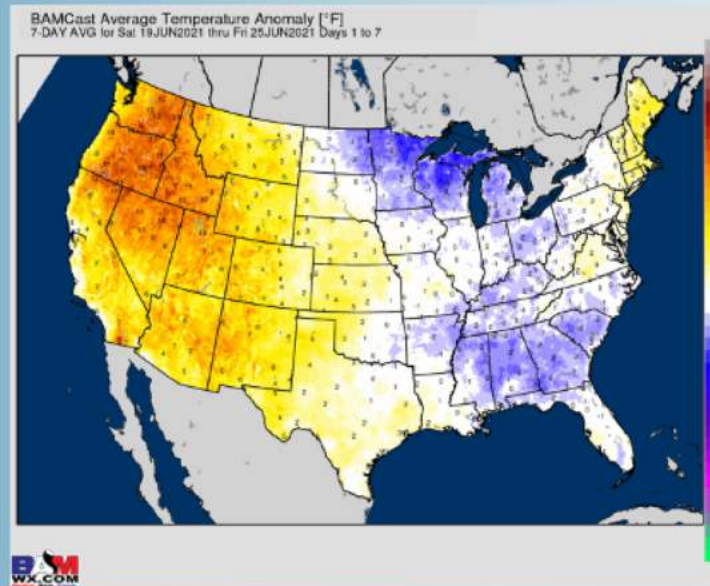
## Simulated Radar Snapshot (4 PM CT)



## High Temperatures Monday



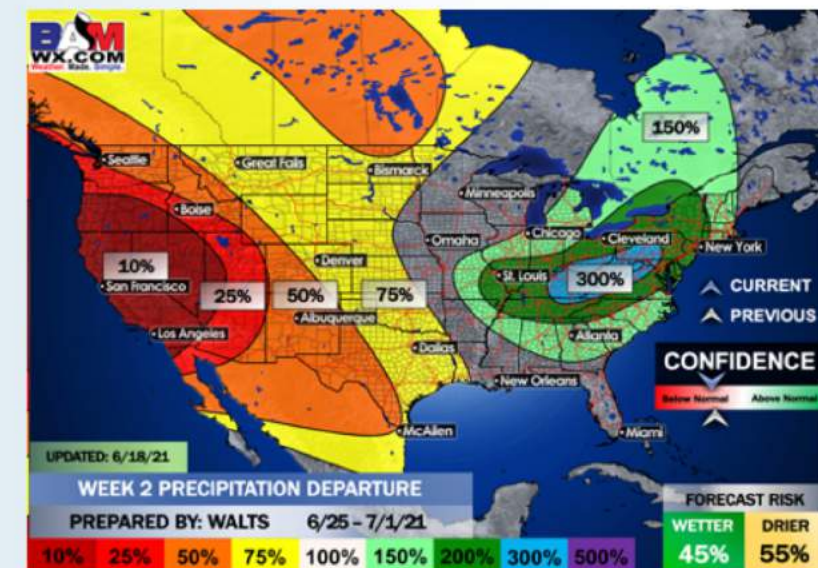
## Week 1 Forecast



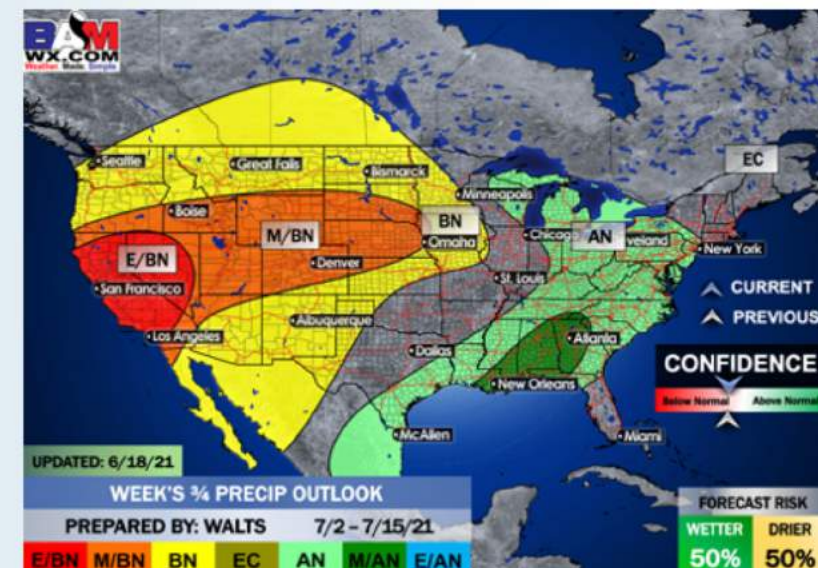
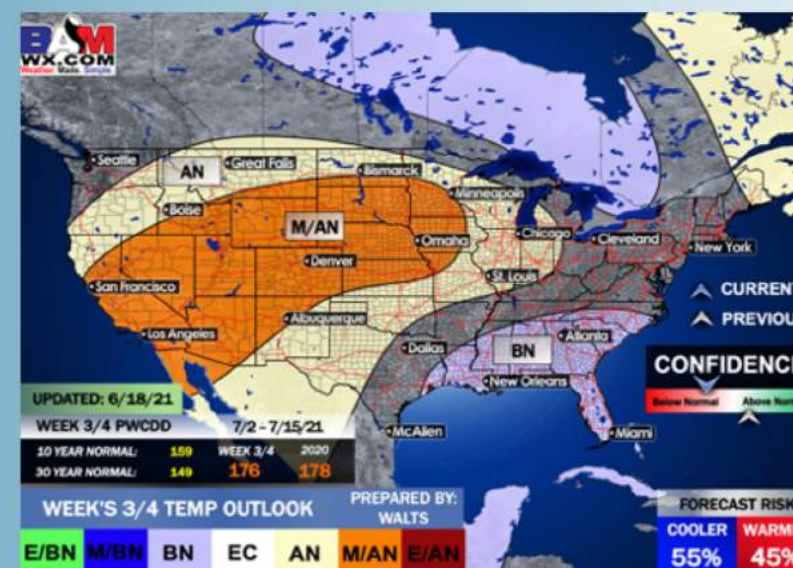
## Long-Range Forecast Discussion

- Temperatures look to run at/ slightly above normal the next 7 days. It still looks like the heavy rains with what will be Tropical Storm Claudette should stay east of the area but rain risks will be on the uptick this weekend into early next week.
- Week 2 is anticipated to trend drier vs previous wetter weeks across the area, while temps look to stay about normal to slightly cooler here into late June.

## Week 2 Forecast



## Weeks 3/4 Forecast



- The weeks 3/4 (late June to early July) period likely features more seasonable to cooler than normal temperatures, while precipitation looks to return back to above normal in this period as well.