

Updated: 4:30 AM CT, Sunday, June 20, 2021

- **As always, please do not hesitate to reach out to us with any forecast questions via the chat option on the Weather Porthole or our on call number, **(317)-560-8122** press 1 for forecast questions.**



Visibility Report

Sunday, June 20, 2021

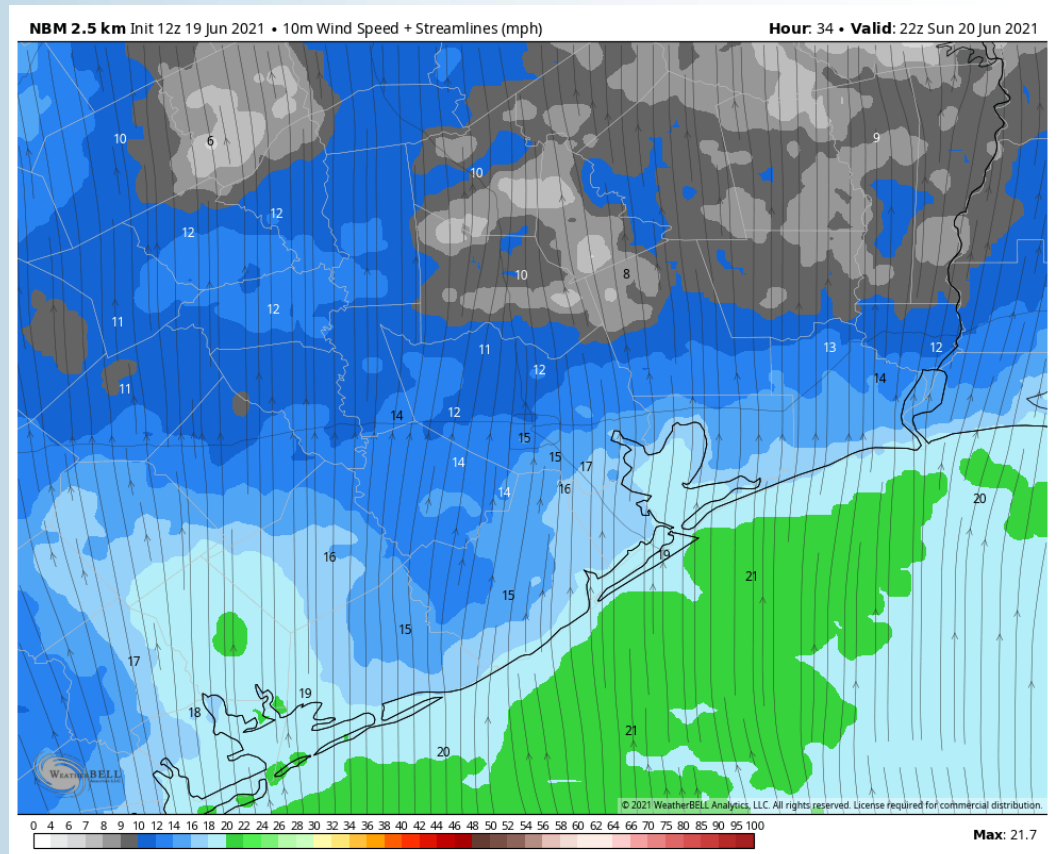
HOURLY VISIBILITY BREAKDOWN (in miles)

Time	06-20-2021 Sun 3am	06-20-2021 Sun 4am	06-20-2021 Sun 5am	06-20-2021 Sun 6am	06-20-2021 Sun 7am	06-20-2021 Sun 8am	06-20-2021 Sun 9am	06-20-2021 Sun 10am	06-20-2021 Sun 11am	06-20-2021 Sun 12pm	06-20-2021 Sun 1pm	06-20-2021 Sun 2pm	06-20-2021 Sun 3pm	06-20-2021 Sun 4pm	06-20-2021 Sun 5pm	06-20-2021 Sun 6pm	06-20-2021 Sun 7pm	06-20-2021 Sun 8pm	06-20-2021 Sun 9pm	06-20-2021 Sun 10pm	06-20-2021 Sun 11pm	06-21-2021 Mon 12am	06-21-2021 Mon 1am	06-21-2021 Mon 2am	06-21-2021 Mon 3am	06-21-2021 Mon 4am	06-21-2021 Mon 5am	06-21-2021 Mon 6am	06-21-2021 Mon 7am	06-21-2021 Mon 8am	06-21-2021 Mon 9am	06-21-2021 Mon 10am	06-21-2021 Mon 11am	06-21-2021 Mon 12pm	06-21-2021 Mon 1pm	06-21-2021 Mon 2pm
Houston Pilots N - 610 Bridge	8.963	8.703	8.345	8.228	6.815	7.134	7.754	9.841	2.353	0.851	2.076	5.603	3.840	1.006	3.458	0.406	0.282	5.360	7.491	8.576	5.778	5.299	8.629	5.869	5.794	5.096	6.381	5.225	4.430	4.894	4.296	4.698	2.526	5.549	5.994	7.596
Houston Pilots M - Kinder 1	8.699	8.631	8.516	8.396	8.230	7.134	7.754	9.841	2.353	0.851	2.076	5.603	3.840	1.006	3.458	0.406	0.282	5.360	7.491	8.576	5.778	5.299	8.189	4.585	5.794	5.096	6.381	5.225	4.554	4.894	4.296	4.698	2.526	5.539	5.994	7.596
Houston Pilots L - Greens Bayou	8.669	8.565	8.354	8.276	8.107	7.134	8.242	9.841	2.353	0.851	2.076	5.603	3.840	1.006	3.458	0.406	0.282	5.360	7.491	8.576	5.626	5.299	8.189	4.585	8.225	5.096	6.381	6.725	4.671	5.332	4.296	4.456	2.526	4.873	5.994	7.335
Houston Pilots K - Shell Crude	8.585	8.483	8.325	8.294	8.185	7.134	8.242	9.841	2.353	0.851	5.007	5.603	4.110	1.394	3.458	0.406	1.529	5.418	7.491	8.576	5.590	5.241	8.189	4.585	8.225	5.096	6.381	7.167	7.547	5.319	3.374	4.698	5.112	4.873	6.899	7.335
Houston Pilots J - Lynchburg Ferries	8.423	8.403	8.297	8.233	7.670	7.134	7.834	8.590	10.00	1.469	7.737	5.603	4.182	3.489	3.458	3.227	2.952	5.496	7.826	8.576	5.590	5.241	7.036	4.585	8.225	7.289	8.106	7.167	8.343	5.319	2.903	4.456	5.112	4.816	6.865	7.335
Houston Pilots I - Exxon 3	8.423	8.403	8.323	8.243	8.185	7.134	7.834	8.590	9.842	1.469	7.737	5.603	5.434	3.489	4.219	3.227	2.952	5.496	8.094	7.834	5.590	5.241	8.099	4.585	8.426	8.086	5.794	7.066	8.393	5.319	2.845	4.894	5.112	4.873	6.197	7.335
Houston Pilots H - Morgans Point	8.496	8.422	8.357	8.243	8.375	7.134	7.834	9.151	4.317	1.469	6.932	5.875	5.573	3.489	4.411	4.648	2.952	5.496	8.455	7.834	5.590	5.241	8.189	4.585	8.426	7.398	4.614	4.517	4.831	4.634	2.845	4.768	2.864	5.714	6.197	7.335
Houston Pilots G - 75/76	8.838	8.756	8.974	8.603	8.529	8.486	7.668	10.00	9.842	1.486	6.209	7.893	7.991	3.489	5.138	5.345	5.450	6.413	7.903	8.004	5.590	6.519	8.082	4.901	8.426	7.398	4.455	4.255	2.323	4.997	4.721	4.894	2.864	5.714	6.197	10.00
Houston Pilots F - 63/64	9.196	9.026	8.984	8.246	8.749	9.028	7.668	10.00	9.839	6.133	3.335	9.173	7.711	5.242	5.719	5.792	5.450	6.272	7.903	8.063	6.268	8.213	8.635	4.620	8.877	5.514	4.455	4.120	2.323	2.088	5.780	5.387	4.137	6.326	8.197	10.00
Houston Pilots E - 51/52	9.438	9.354	9.163	9.331	8.761	8.556	7.668	10.00	9.839	8.344	3.335	9.173	7.711	5.242	7.568	7.540	6.634	6.272	7.903	8.063	6.268	9.452	8.557	4.620	8.940	4.931	4.455	3.393	2.323	2.088	5.780	6.342	5.399	6.681	8.927	10.00
Houston Pilots D - 37/38	9.438	9.354	9.163	9.000	8.212	8.556	7.668	10.00	8.576	6.331	3.335	7.312	3.861	5.242	6.360	6.982	6.634	6.272	7.903	8.063	6.607	9.452	8.557	4.620	8.940	4.332	4.455	3.393	2.323	4.394	5.780	6.664	5.399	7.910	8.927	10.00
Houston Pilots C - 25/26	10.00	10.00	9.872	9.501	8.761	8.556	8.419	10.00	8.576	9.120	3.335	7.312	3.861	5.434	5.922	6.942	6.634	6.309	7.971	8.063	6.607	8.930	8.548	5.338	8.599	4.931	4.889	3.393	2.800	4.942	5.780	6.664	6.060	7.910	8.927	9.620
Houston Pilots B - 11/12	10.00	10.00	9.916	10.00	9.219	8.556	9.713	10.00	8.576	9.146	6.454	7.312	3.861	6.040	5.922	6.942	6.634	6.309	7.971	8.063	6.607	8.457	6.695	5.339	6.852	5.713	4.412	3.146	2.800	4.942	7.365	6.664	6.060	7.910	8.927	9.424
Houston Pilots A - 1 & 2 Bravo	10.00	10.00	9.916	10.00	10.00	9.747	10.00	10.00	9.659	6.763	7.145	6.766	7.183	4.475	5.922	6.314	5.734	6.340	8.143	8.265	6.478	8.368	6.567	7.840	6.852	6.396	2.304	3.146	2.987	4.765	7.688	8.724	9.230	7.965	9.307	9.424

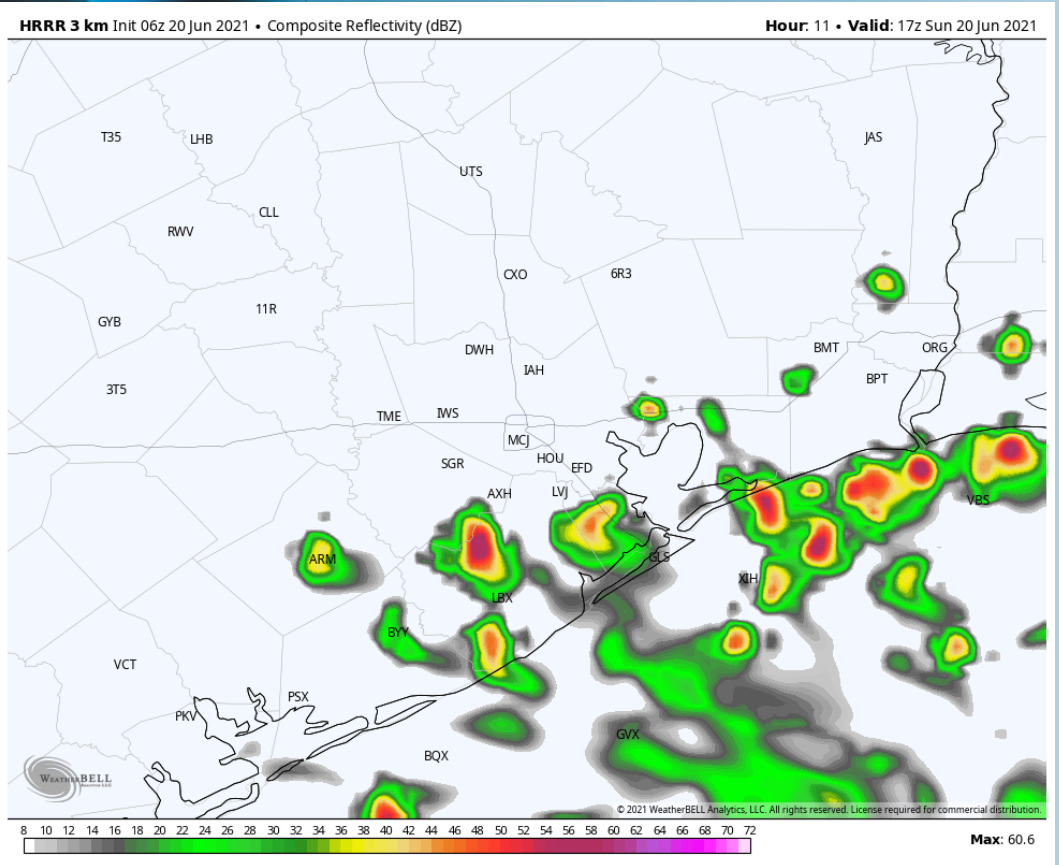
Short-Term Forecast Discussion

- Scattered chances will be possible throughout the day generally after 8 AM this morning. Best chances likely come into the afternoon with daylight providing some instability into the atmosphere. Storms today can be capable of locally heavy down pours and gusty conditions.
- Winds look to gradually pick up into the afternoon remaining out of the south. Winds will be a bit elevated today, sustained around 10 – 20 MPH (higher end of range towards the Boarding Station). Gust around 25 MPH will be possible with stronger gust possible in storms that develop. Winds likely continue to remain elevated through the overnight into tomorrow morning.
- High Temperatures look to once again get in the upper 80's F to lower 90's F over open waters on Sunday
 - *No fog anticipated Sunday.*

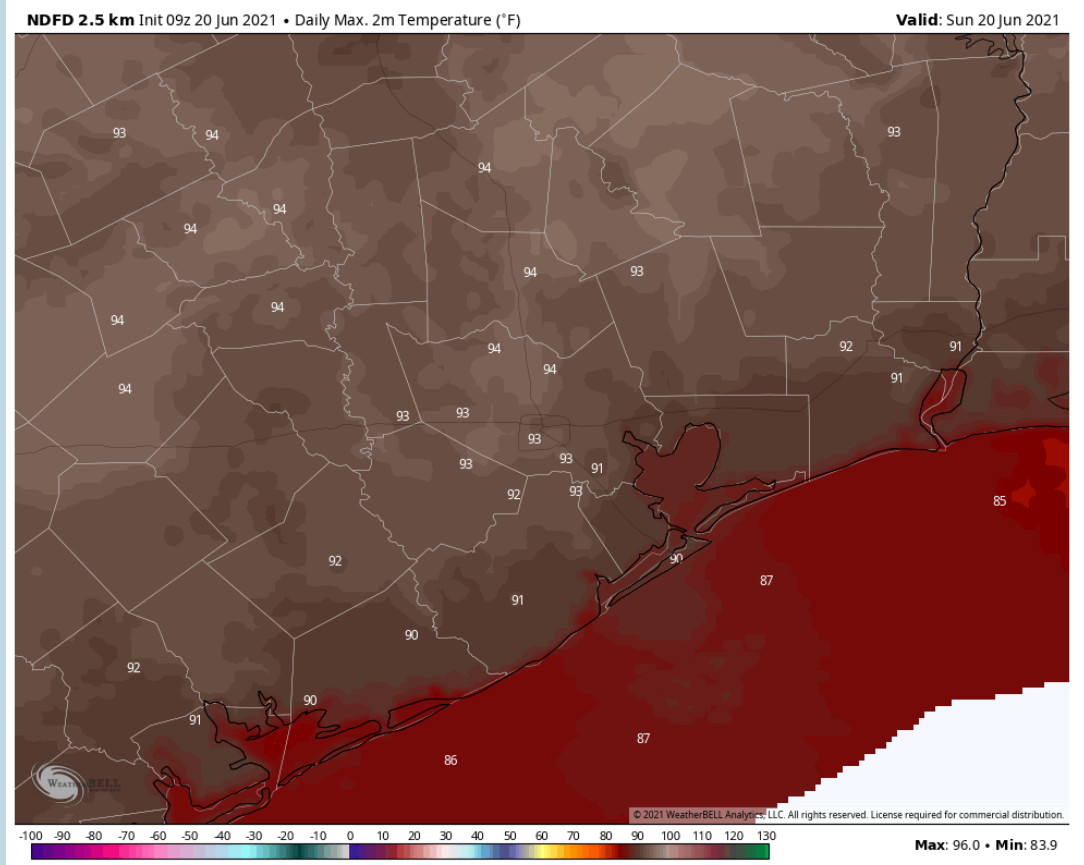
Sustained Winds (5 PM CT)



Simulated Radar Snapshot (12 PM CT)



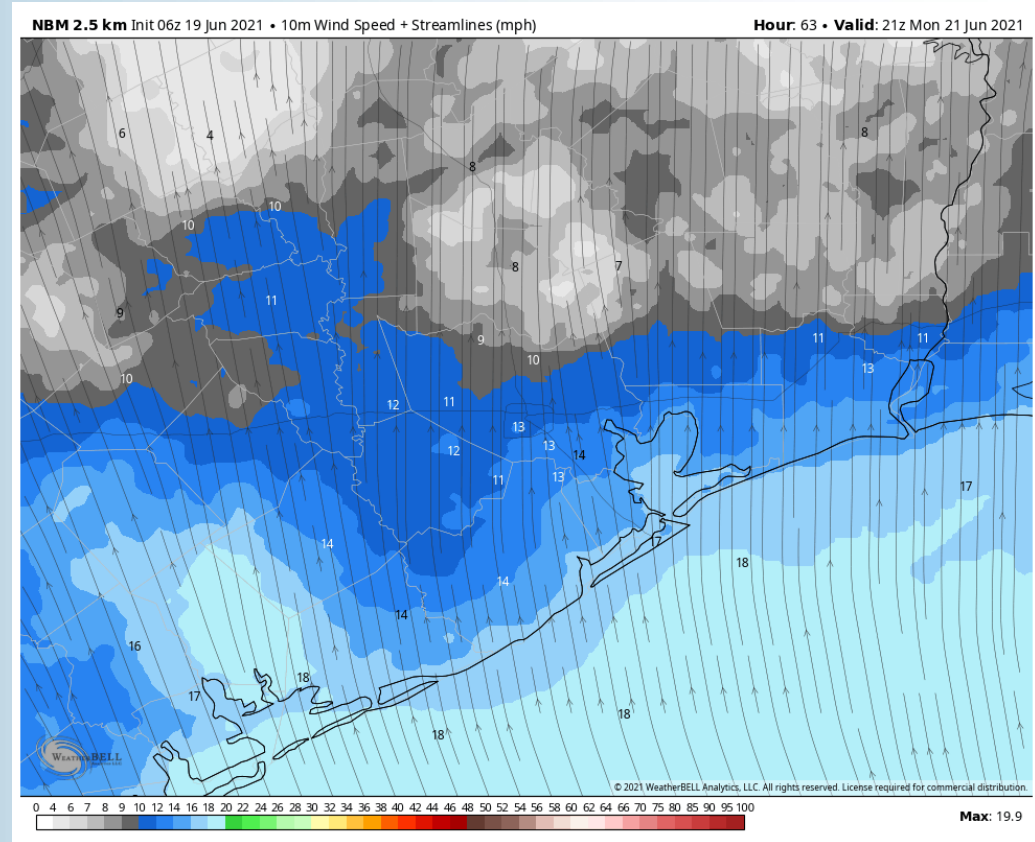
High Temperatures Sunday



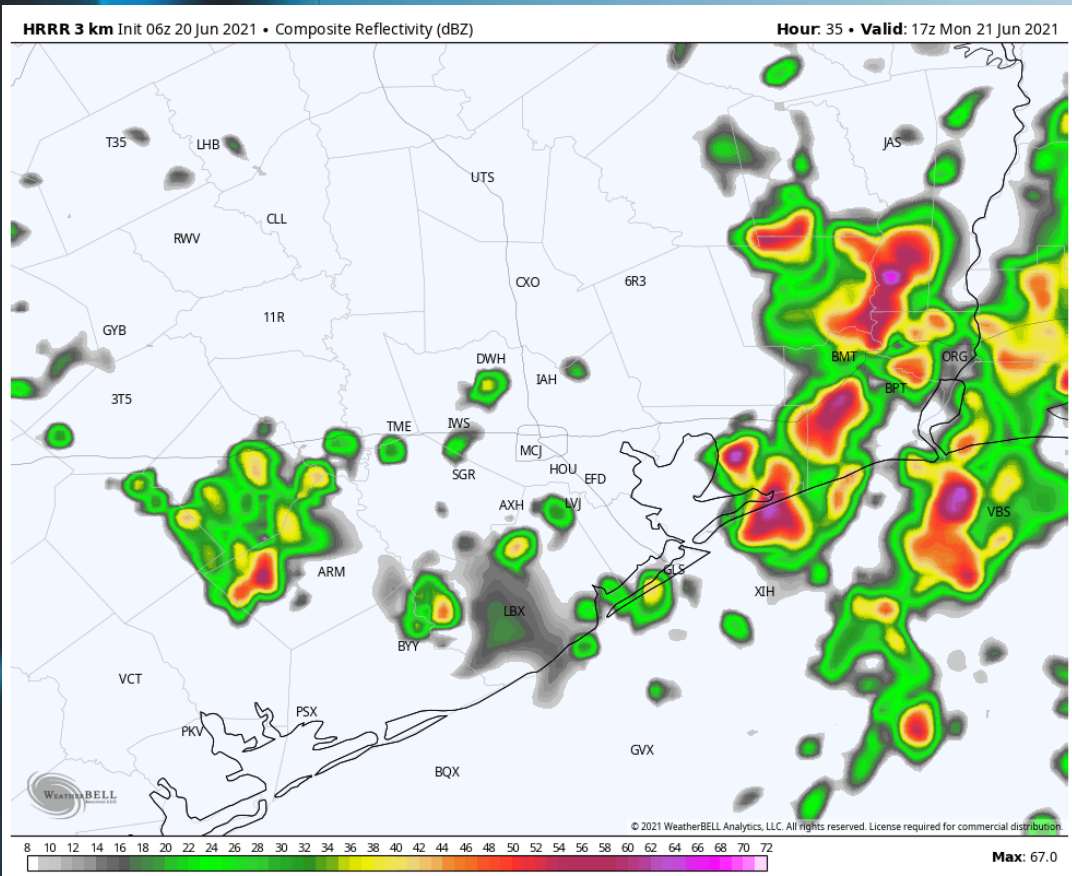
Short-Term Forecast Discussion

- Monday offers scattered chances throughout the day as well. Once again, the most likely timeframe for storms should be in the afternoon hours. Storms on Monday offer locally heavy downpours and gusty conditions.
- Winds likely continue to remain elevated on Monday morning into the afternoon sustained around 10 – 20 MPH out of the south with gusts near 25 MPH possible (stronger under storms). Winds start to subside closer towards midnight.
- Temperatures look to get into the upper 80's F to lower 90's F over open waters.
- *No fog anticipated for Monday.*

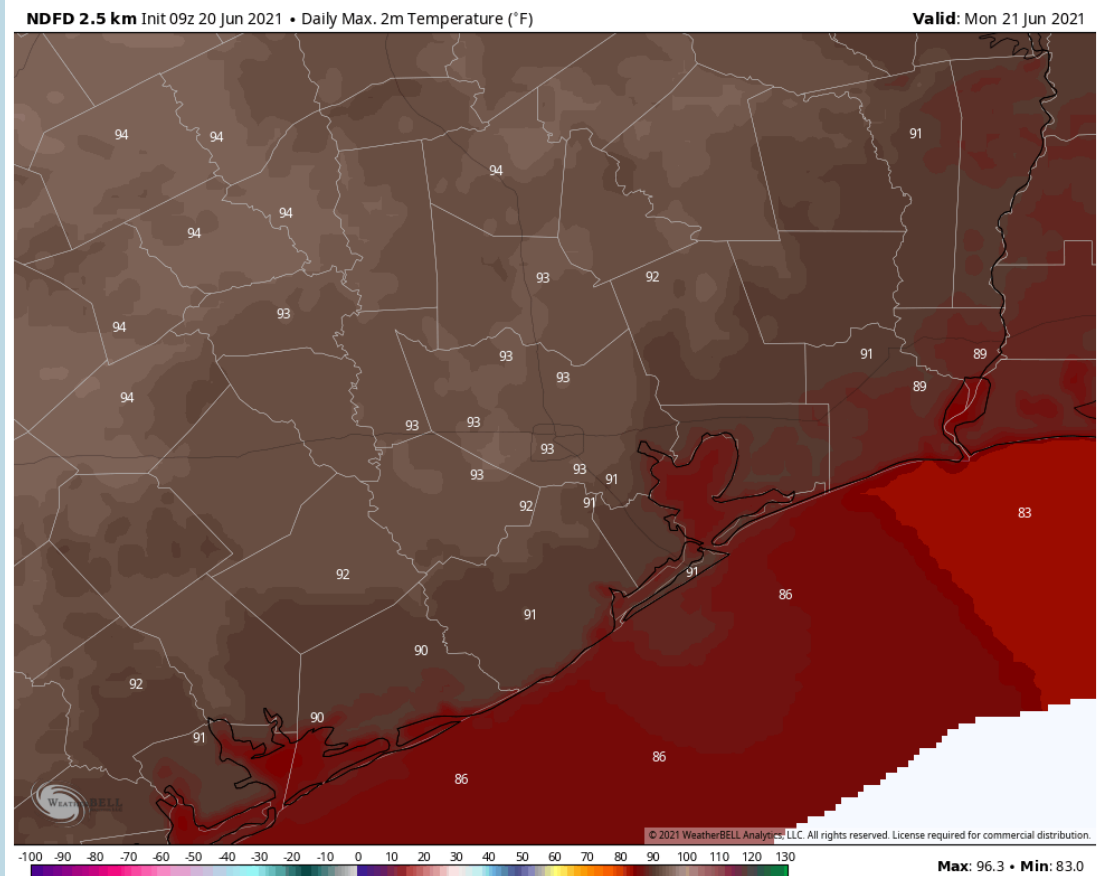
Sustained Winds (4 PM CT)



Simulated Radar Snapshot (12 PM CT)



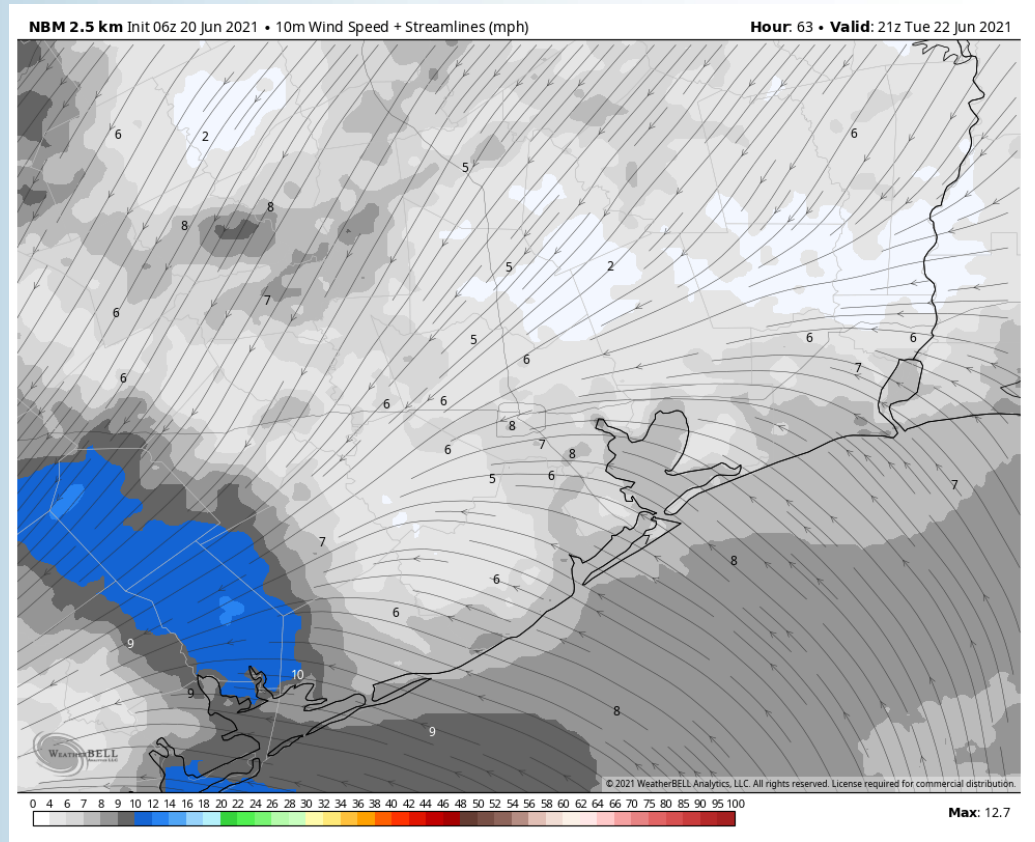
High Temperatures Monday



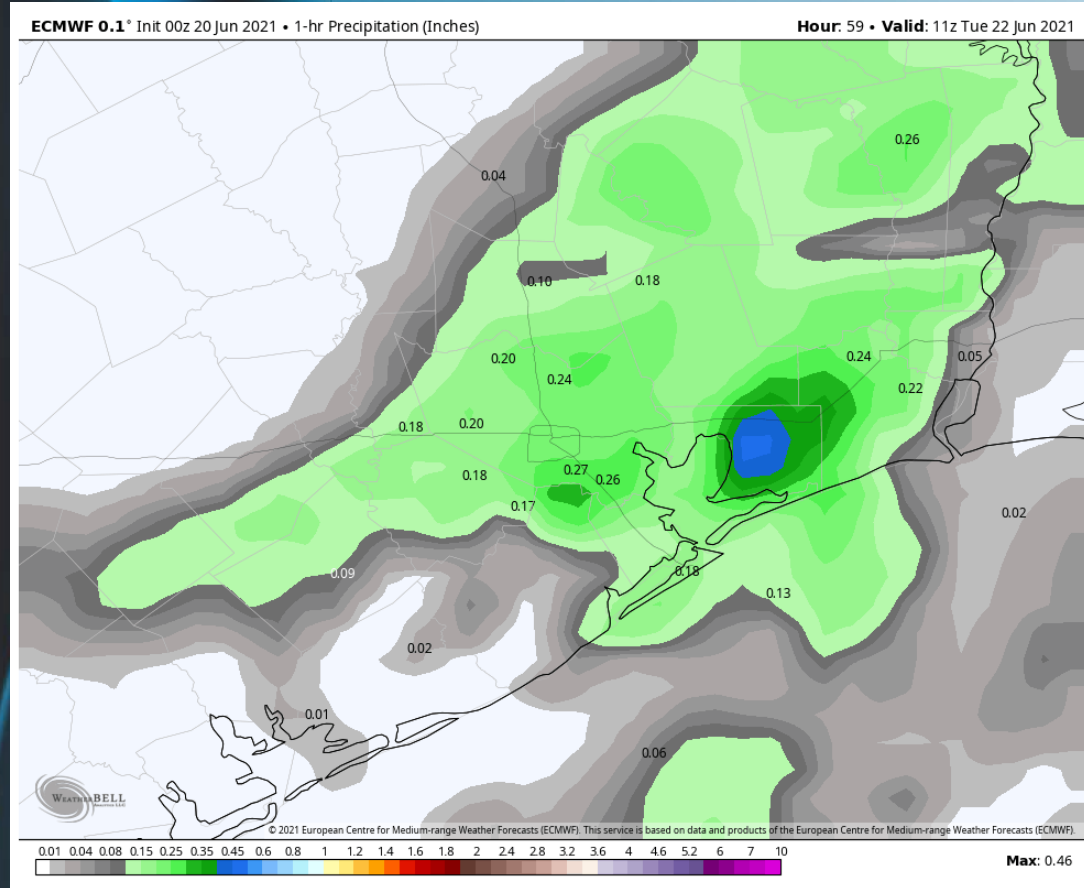
Short-Term Forecast Discussion

- Showers/ storms seem likely TUE morning with scattered chances once again into TUE morning.
- Winds are anticipated to be on the calmer side of things on TUE with winds out of the SE sustained around 5 – 10 MPH.
- High temperatures once again expected to get into the upper 80's F to lower 90's F over open waters on TUE.
- *No fog is favored Tuesday.*

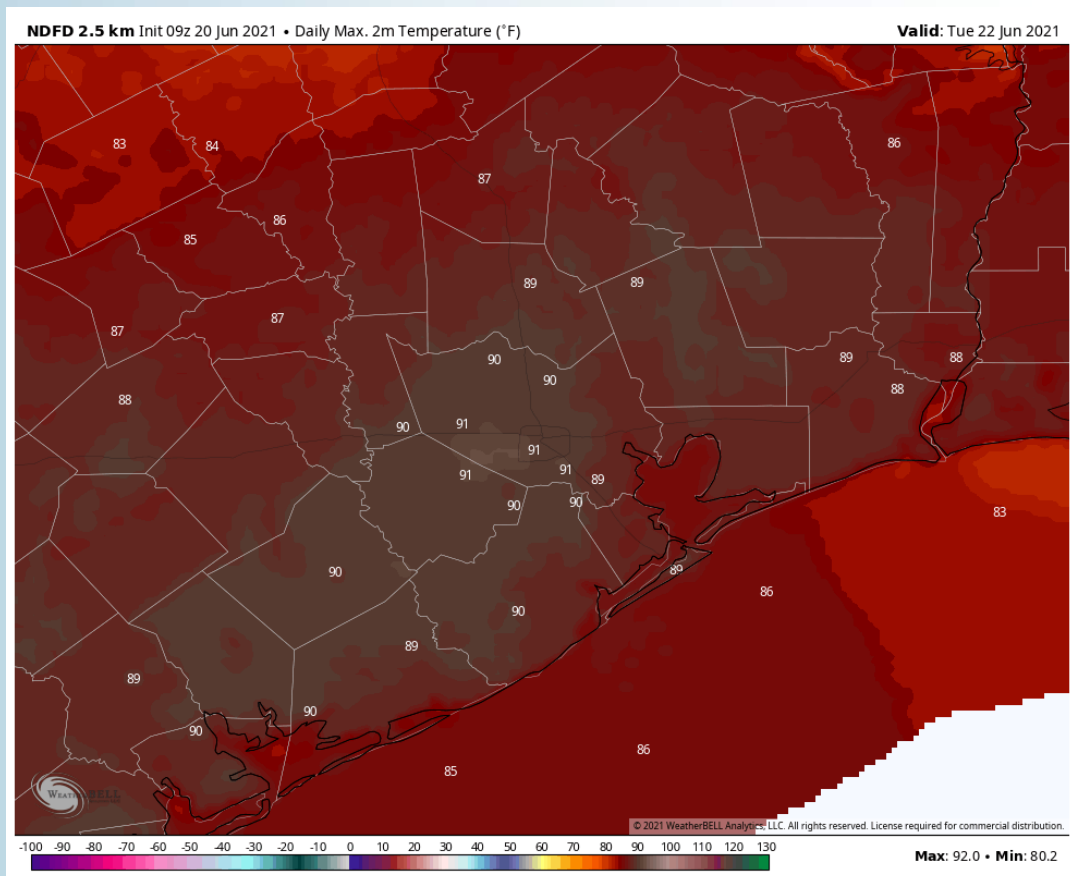
Sustained Winds (4 PM CT)



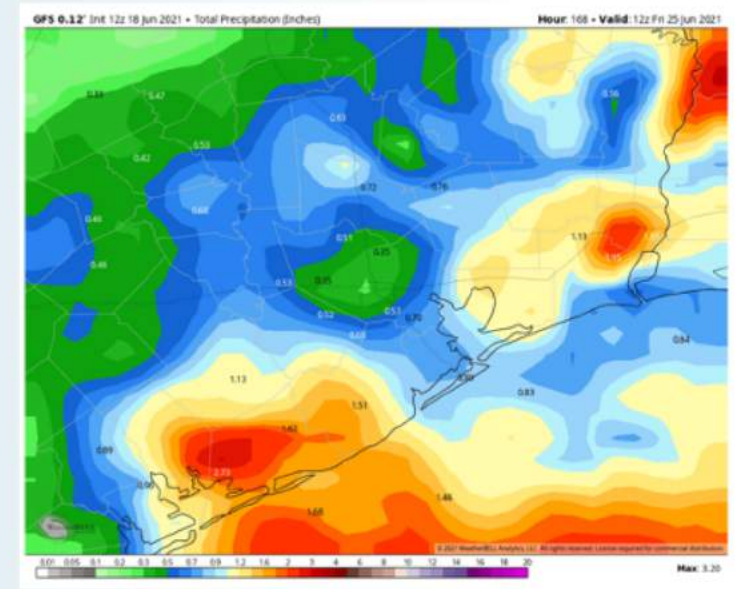
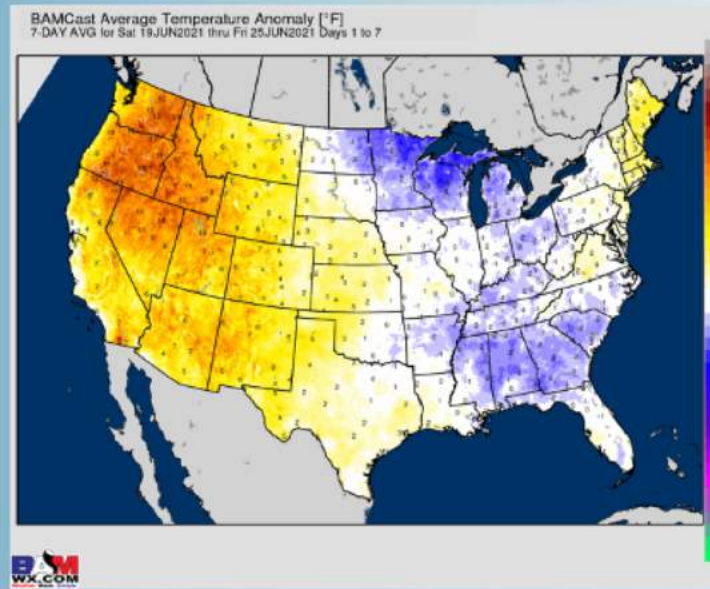
Simulated Radar Snapshot (6 AM CT)



High Temperatures TUE



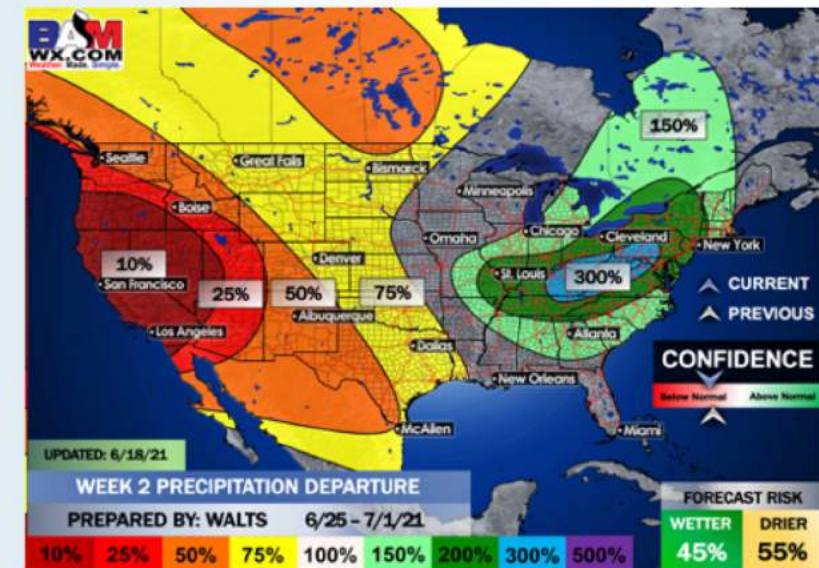
Week 1 Forecast



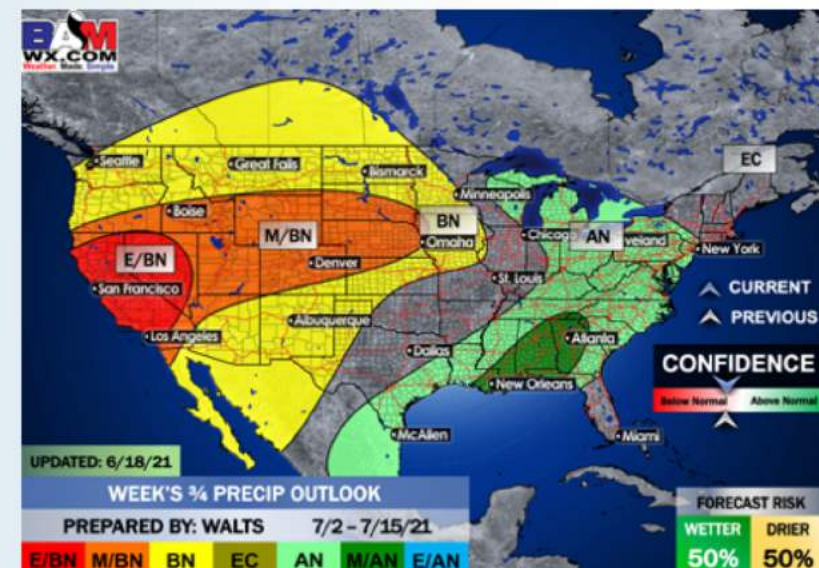
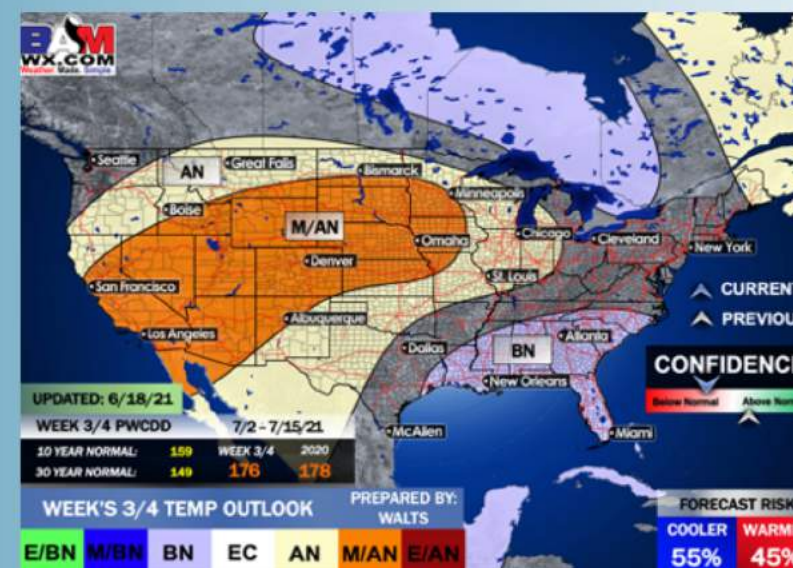
Long-Range Forecast Discussion

- Temperatures look to run at/ slightly above normal the next 7 days. It still looks like the heavy rains with what will be Tropical Storm Claudette should stay east of the area but rain risks will be on the uptick this weekend into early next week.
- Week 2 is anticipated to trend drier vs previous wetter weeks across the area, while temps look to stay about normal to slightly cooler here into late June.

Week 2 Forecast



Weeks 3/4 Forecast



- The weeks 3/4 (late June to early July) period likely features more seasonable to cooler than normal temperatures, while precipitation looks to return back to above normal in this period as well.