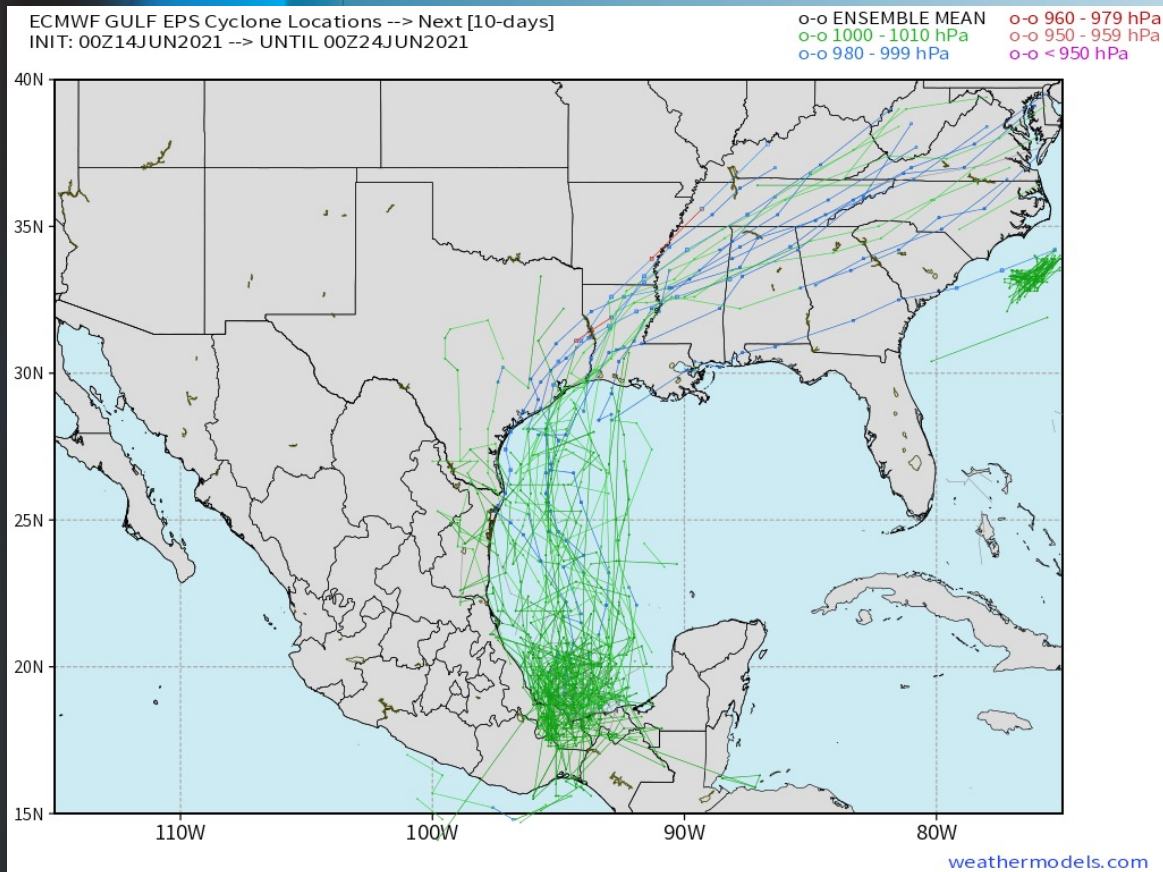


**Updated: 4:30 AM CT, Monday, June 14, 2021**

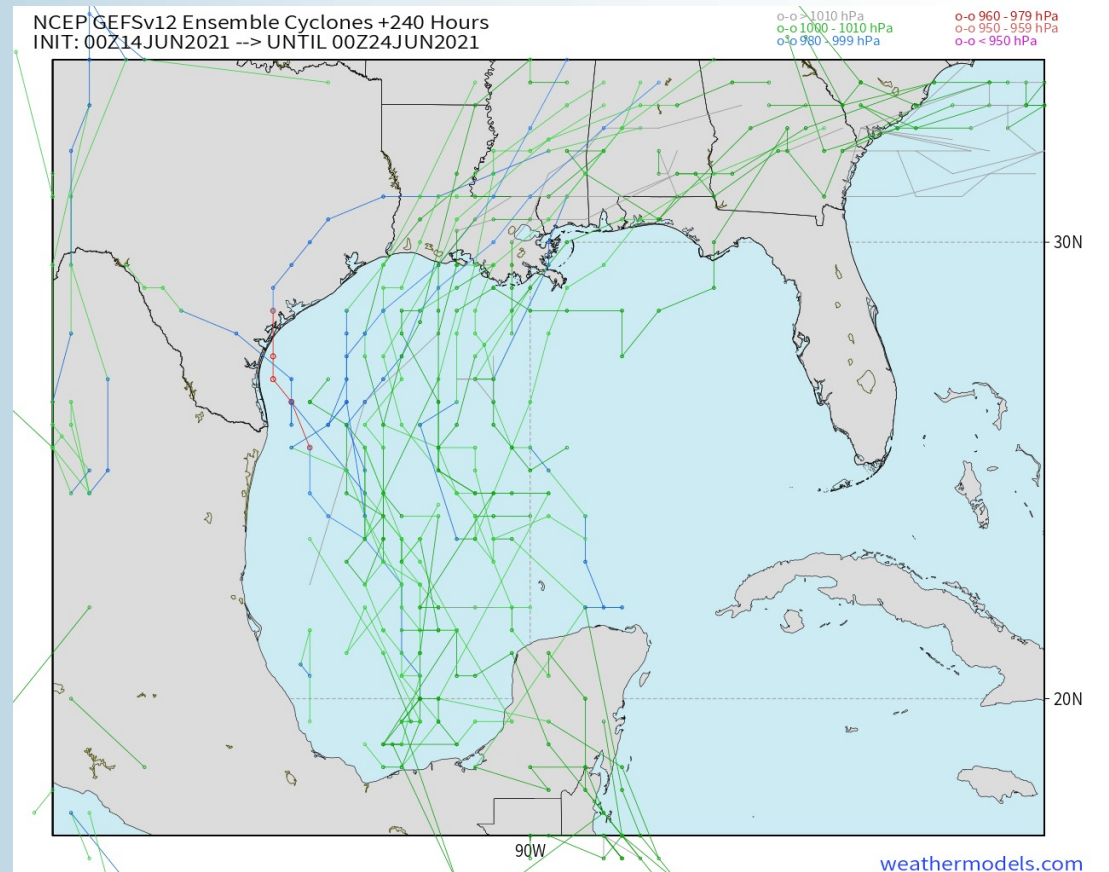
- **As always, please do not hesitate to reach out to us with any forecast questions via the chat option on the Weather Porthole or our on call number, **(317)-560-8122** press 1 for forecast questions.**

# Tropical Update:

## Euro Ensemble Tracks (Next 10-days):



## GEFS Tracks (Next 10-days):



**We continue to keep an eye around the 18<sup>th</sup> – 20<sup>th</sup> for a tropical system which can impact areas along the Gulf Coast. Shown above are the European and American (GEFS) ensembles of low pressure tracks with this upcoming system. The majority of model data continues to suggest a landfall mostly east of HOU. However, enough members in the ensembles are further to the west, so the risk for HOU is still in the realm of possibility. Ensemble members do not really suggest a Hurricane potential as well, more of a tropical storm. We are still several days out, with shifts one way or the other still possible. We will continue to monitor the situation.**



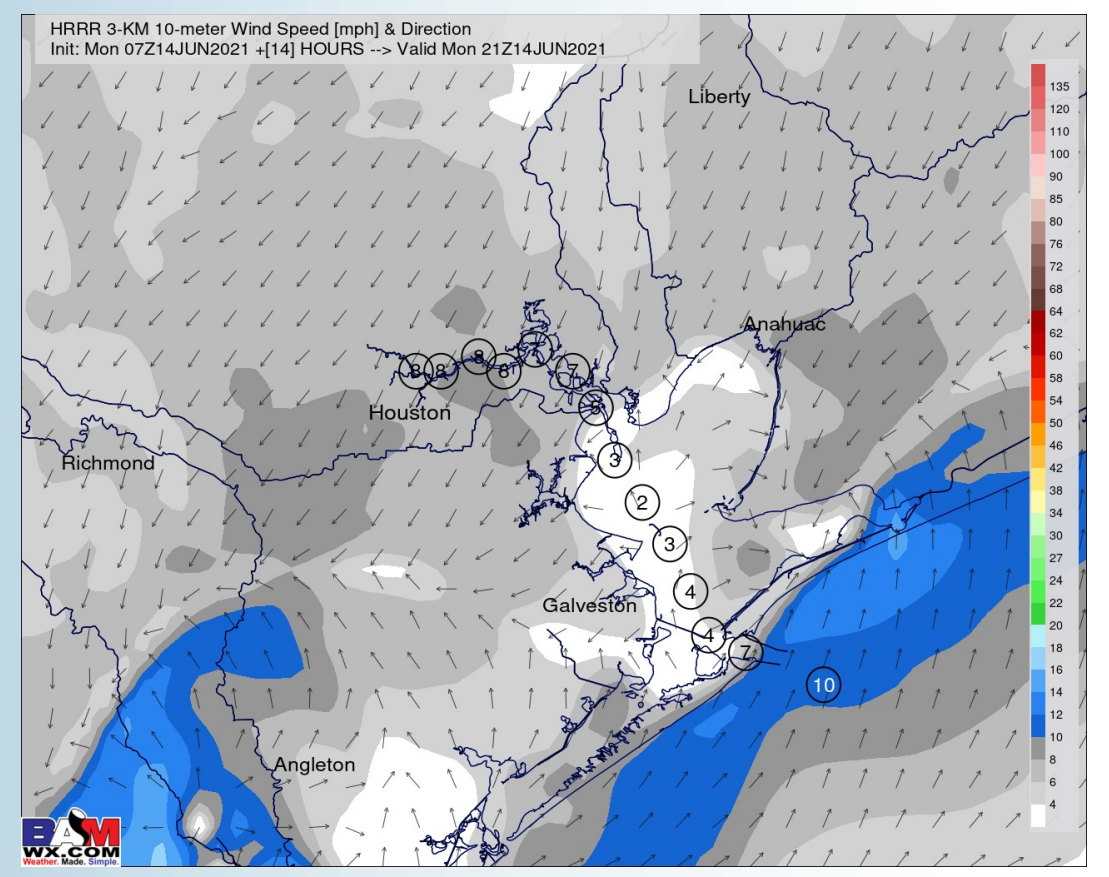




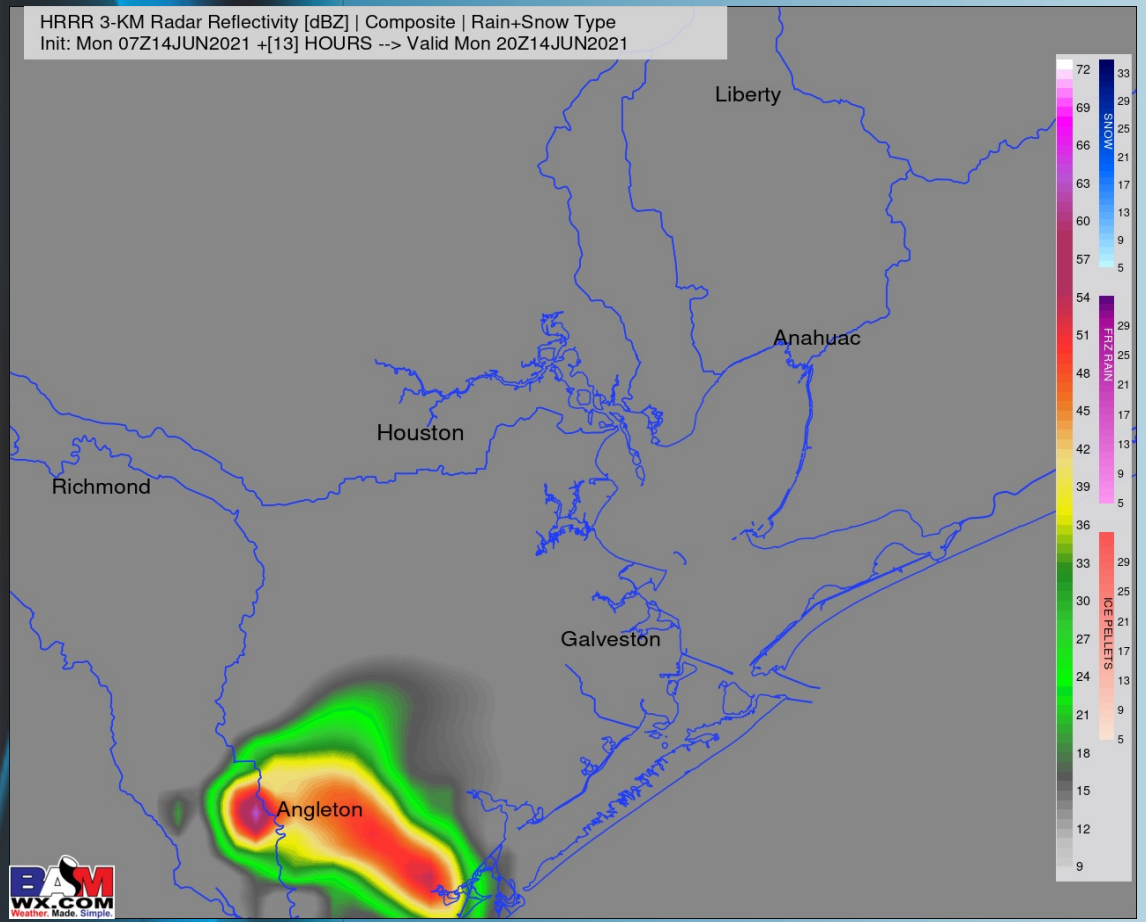
## Short-Term Forecast Discussion

- An isolated shower cannot be ruled out this AM. Data has progressively weakened much in terms of rainfall chances today across the Stations. An isolated shower/storm can't be ruled out into the mid-PM hours, however, anticipating a mostly dry day for us today.
- Winds shift more from the west into this morning then from the north into the early afternoon. A sea-breeze boundary around 4 – 5 PM will allow for the winds to shift back from the south into this evening. Winds are expected to be rather light, around 4 – 8 MPH. Gusts around ~ 10 MPH will be possible.
- High temps look to get into the upper 80's F to lower 90's F over open waters.
  - *Not expecting fog tonight.*

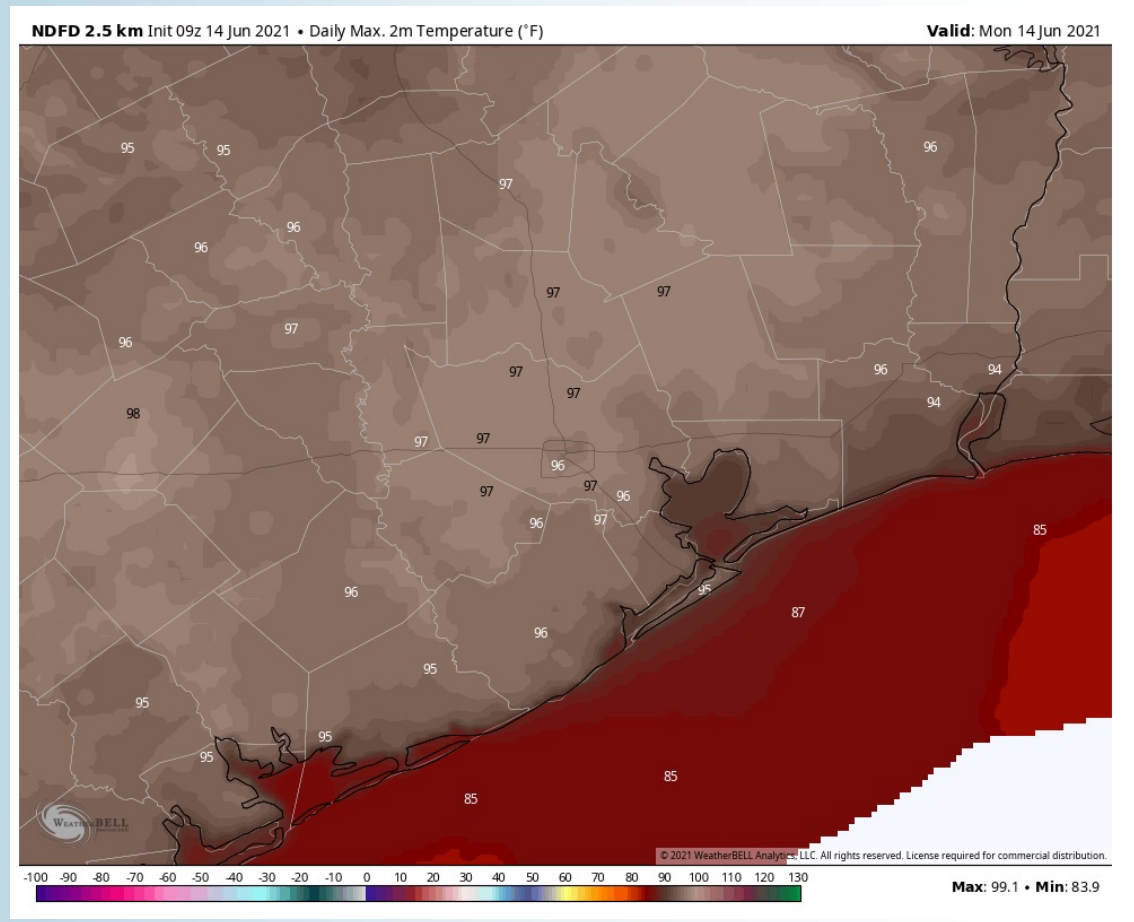
## Sustained Winds (4 PM CT)



## Simulated Radar Snapshot (3 PM CT)



## High Temps Today

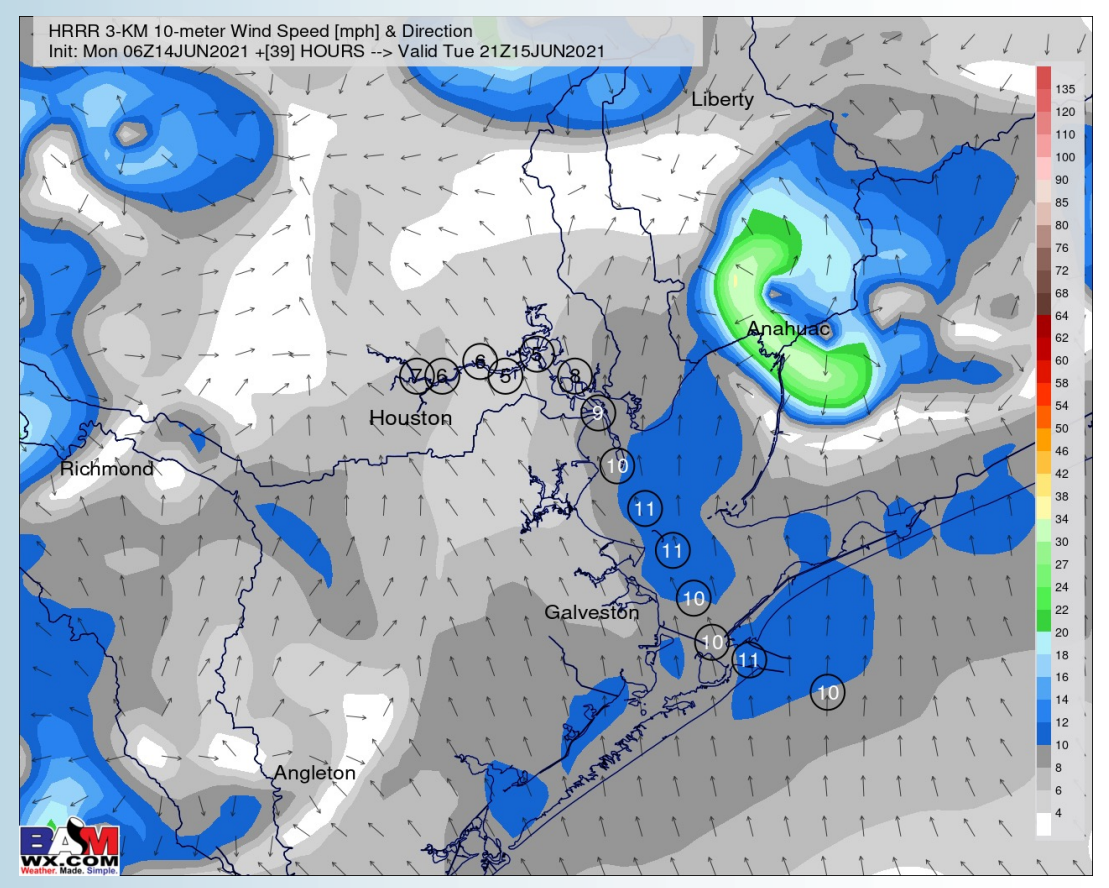




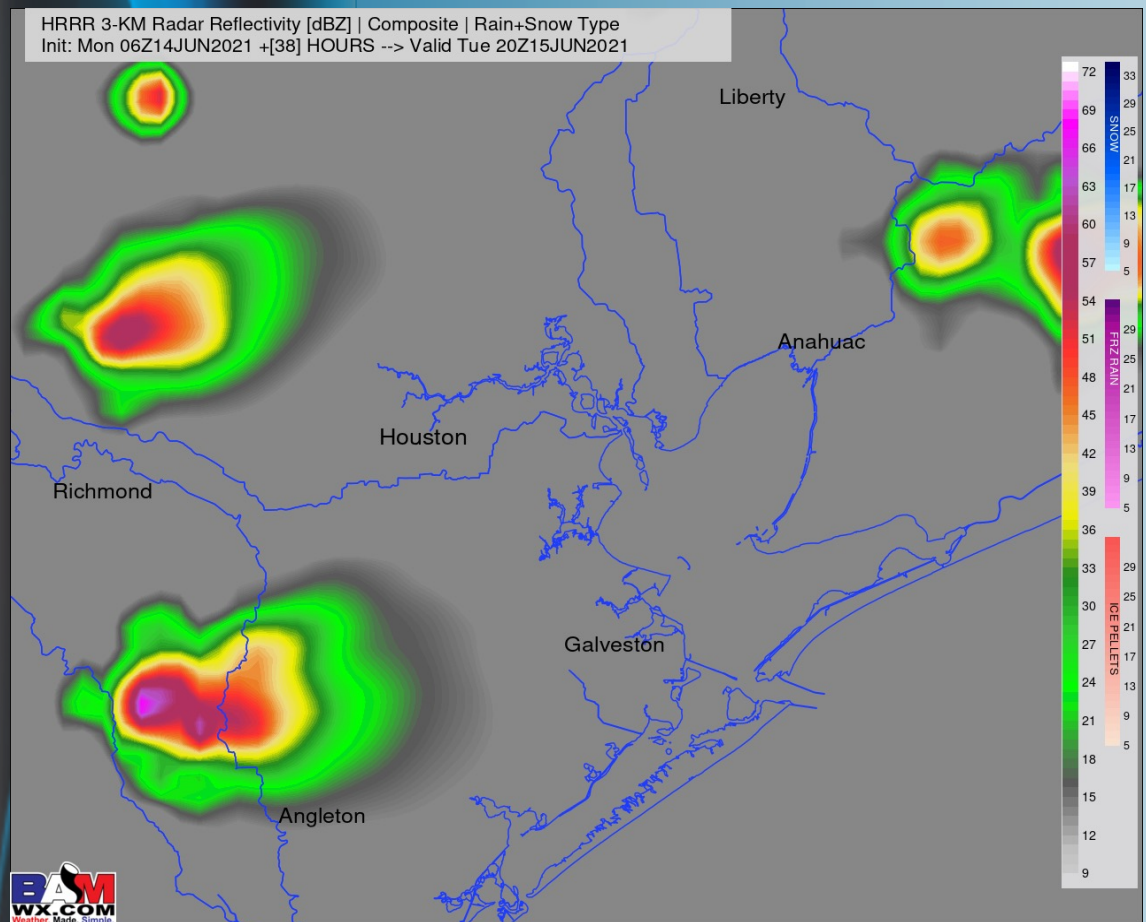
## Short-Term Forecast Discussion

- Tuesday looks to have isolated-to-scattered chances in the afternoon hours with any activity likely waning down with the loss of daylight. A locally heavy downpour can't be ruled out with some lightning and briefly gusty winds if a storm passes over a Station.
- Weak Westerly / SW winds in the AM of Tuesday look to eventually give way to southerly winds into the afternoon. Winds look to rather minimal once again on TUE, around 4 – 8 MPH. Some breezier conditions likely under any storms that can form.
- Temperatures on TUE look to get into the upper 80's F to lower 90's F over open waters.
  - **No fog anticipated Tuesday.**

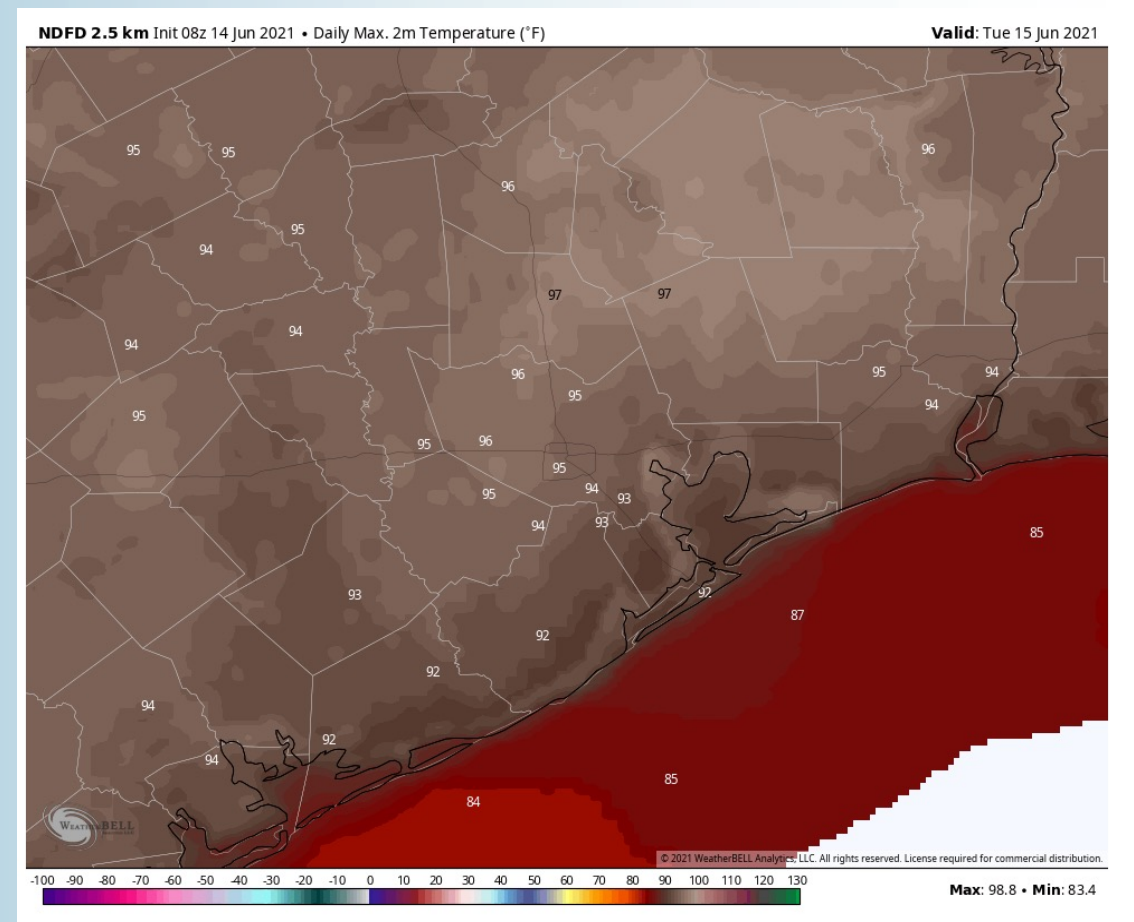
## Sustained Winds (5 PM CT)



## Simulated Radar Snapshot (3 PM CT)



## High Temperatures TUE

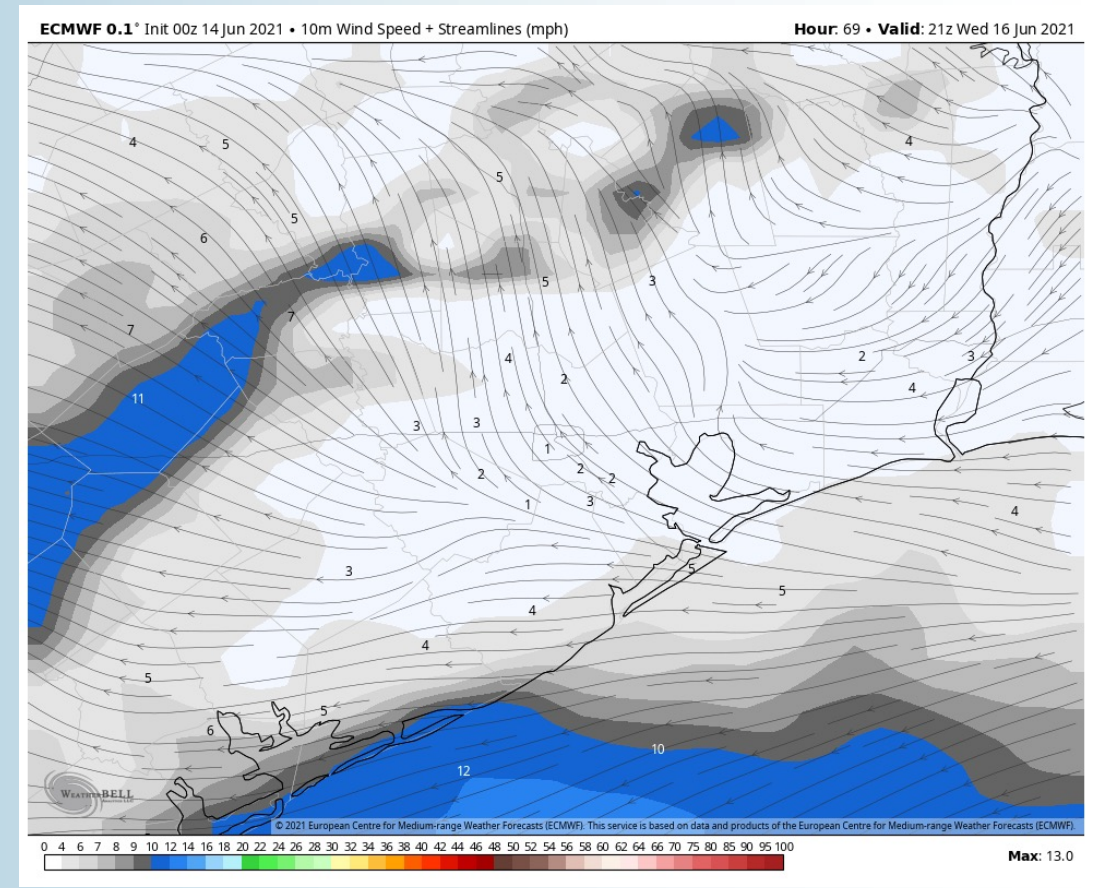




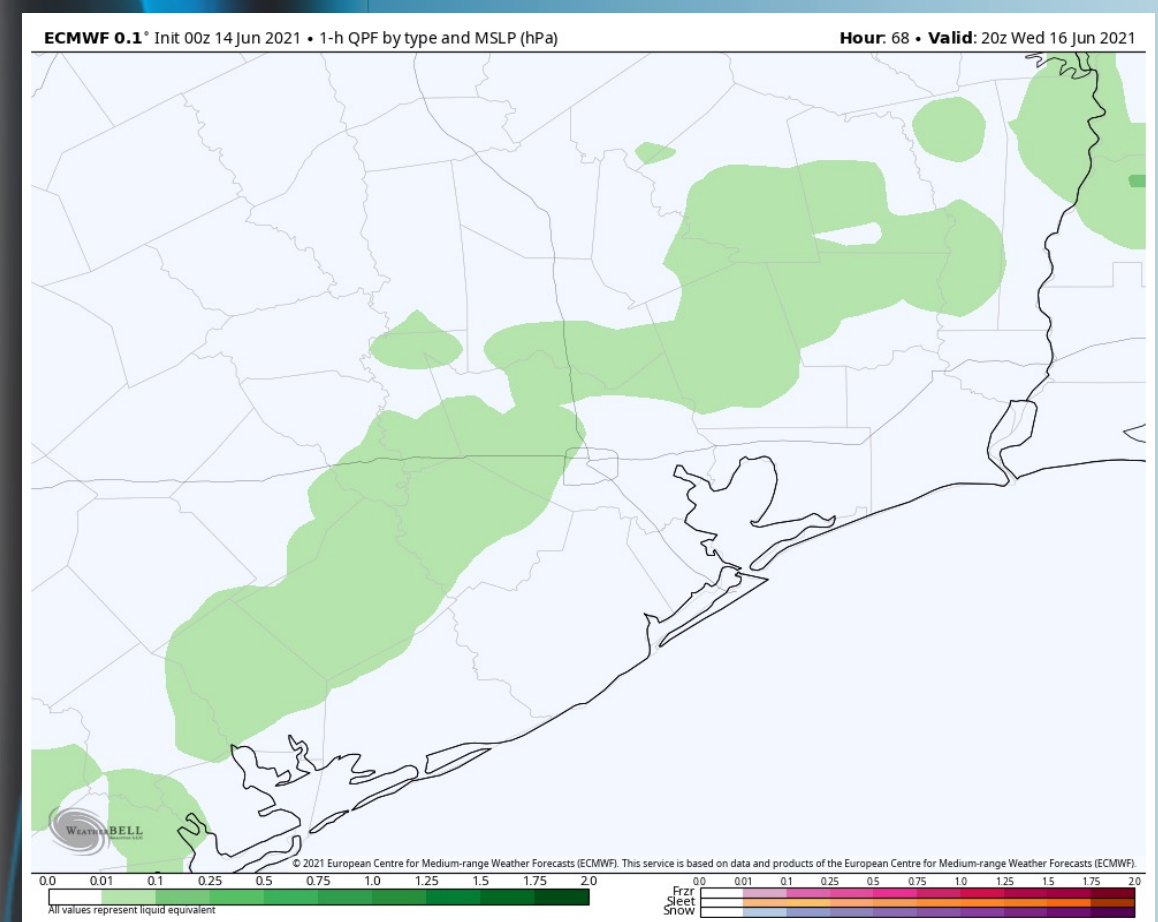
## Short-Term Forecast Discussion

- Wednesday looks to have isolated-to-scattered chances in the afternoon hours with any activity likely waning down with the loss of daylight similar to Tuesday's. A locally heavy downpour can't be ruled out with some lightning and briefly gusty winds if a storm passes over a Station.
- Winds on Wednesday morning look to start weakly out of the NE at 3-6 MPH sustained, shifting out of the SE into the PM hours at a similar speed, possibly at times up to 4-8 MPH sustained.
- Temperatures on WED look to get into the upper 80's F to lower 90's F over open waters.
  - *No fog anticipated Wednesday.*

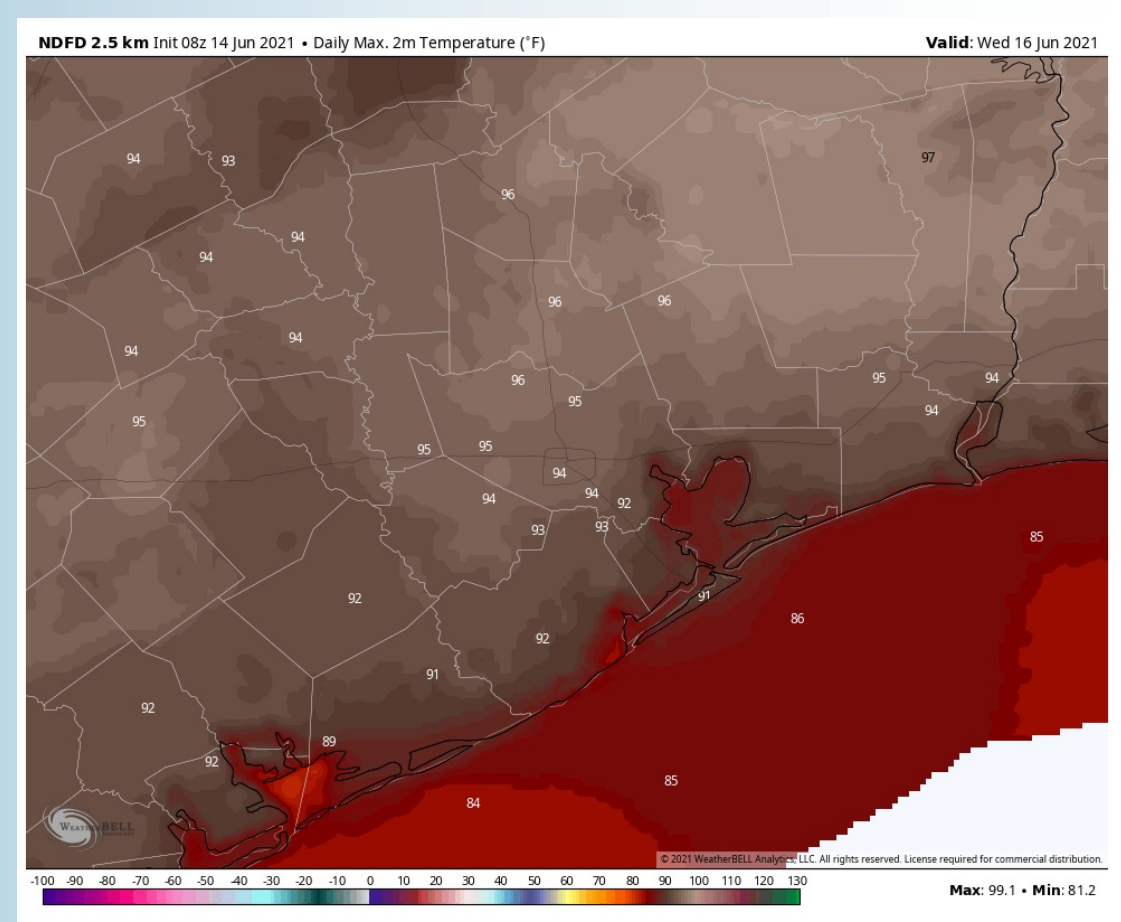
## Sustained Winds (4 PM CT)



## Simulated Radar Snapshot (3 PM CT)



## High Temperatures WED

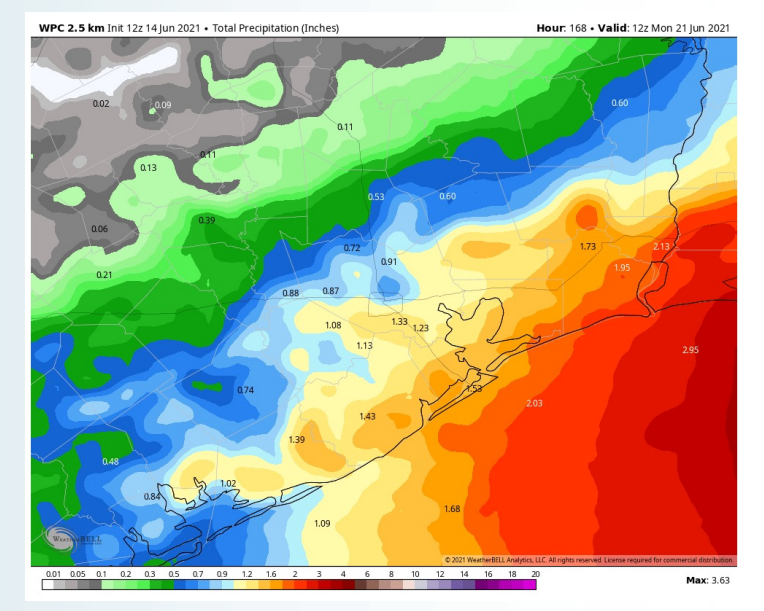
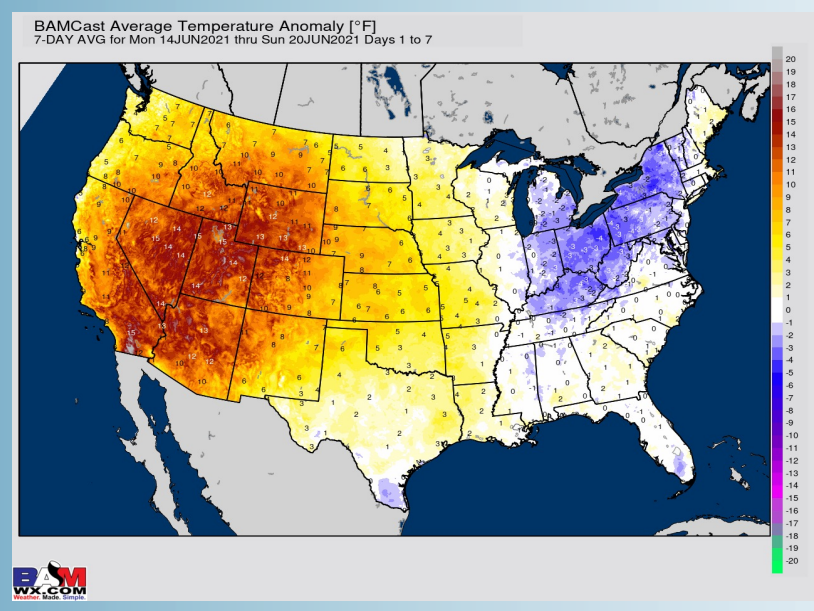




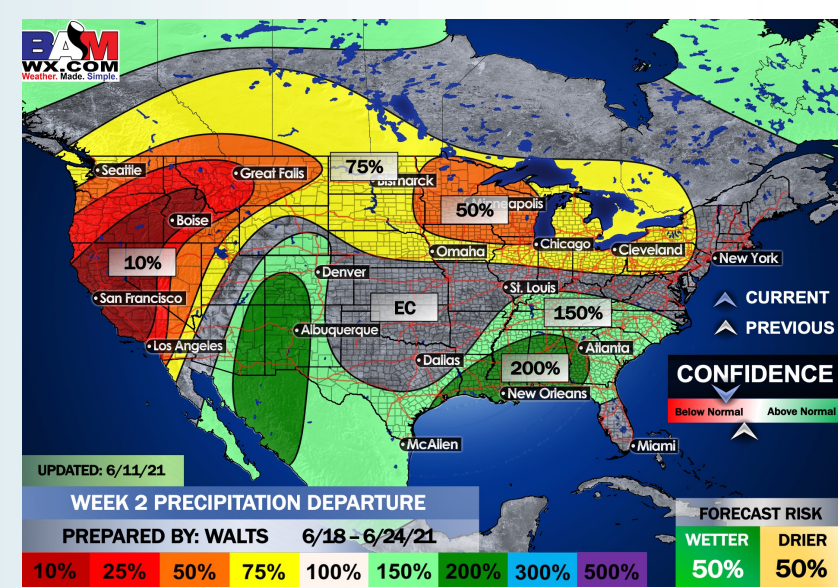
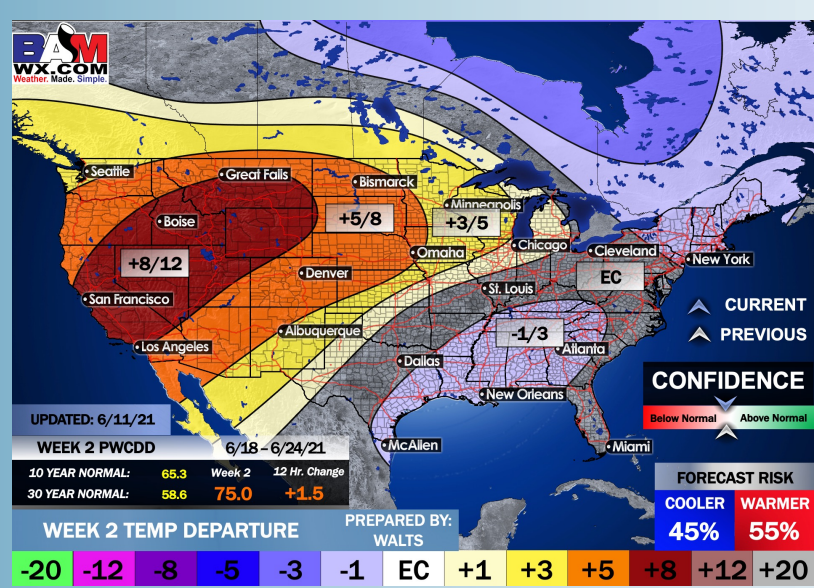
## Long-Range Forecast Discussion

- Temperatures look to run at/ slightly above normal the next 7 days. Scattered chances will be possible for much of the week ahead with increasing chances heading into the weekend as a tropical disturbance gets closer.
  
- Week 2 is anticipated to be an active stretch of weather for HOU with temperatures running slightly below normal. The beginning of the period may see influence of added tropical moisture from the aforementioned system.
  
- The weeks ¾ (mid to late June) period likely features more cooler than normal temperatures and above normal moisture, similar to our current week 2 thoughts. Tropical threats will need to continue to be monitored.

## Week 1 Forecast



## Week 2 Forecast



## Weeks 3/4 Forecast

