

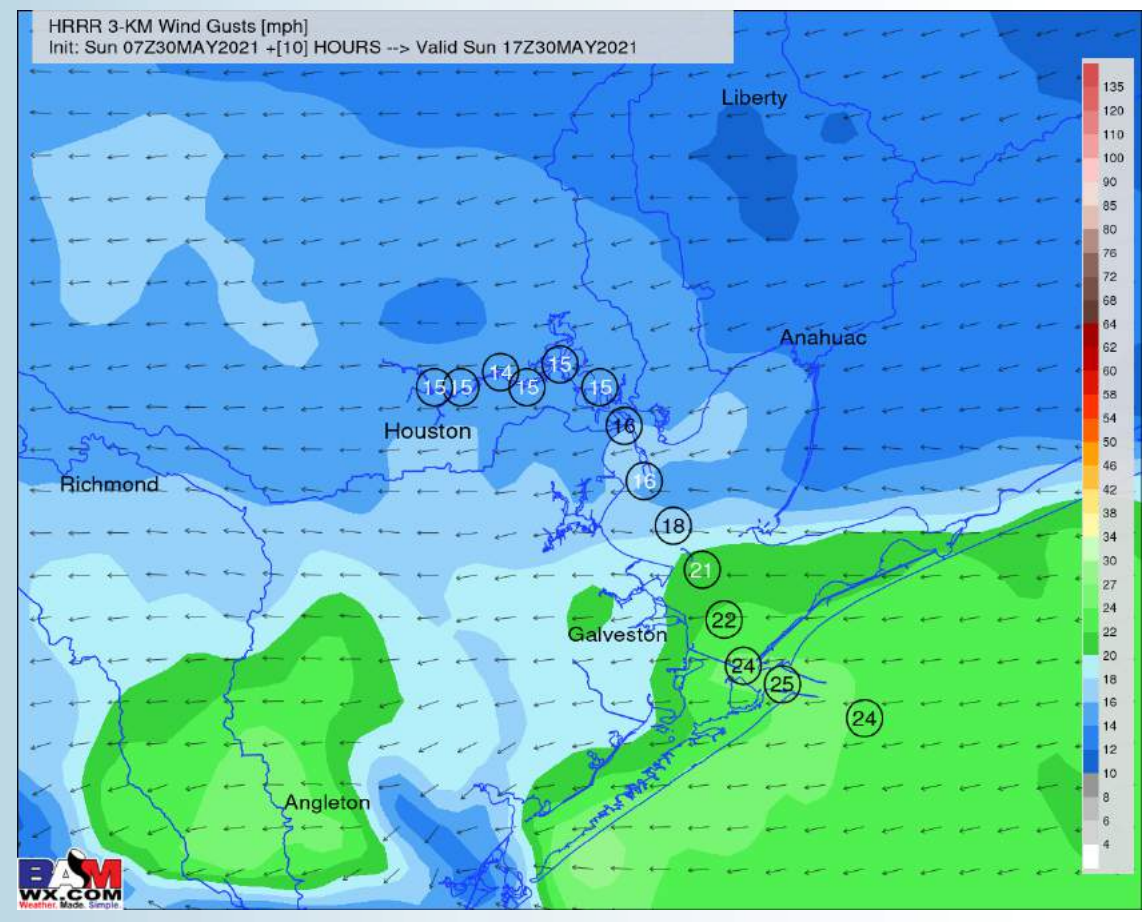
Updated: 4:30 AM CT, Sunday, May 30, 2021

- **As always, please do not hesitate to reach out to us with any forecast questions via the chat option on the Weather Porthole or our on call number, **(317)-560-8122** press 1 for forecast questions.**

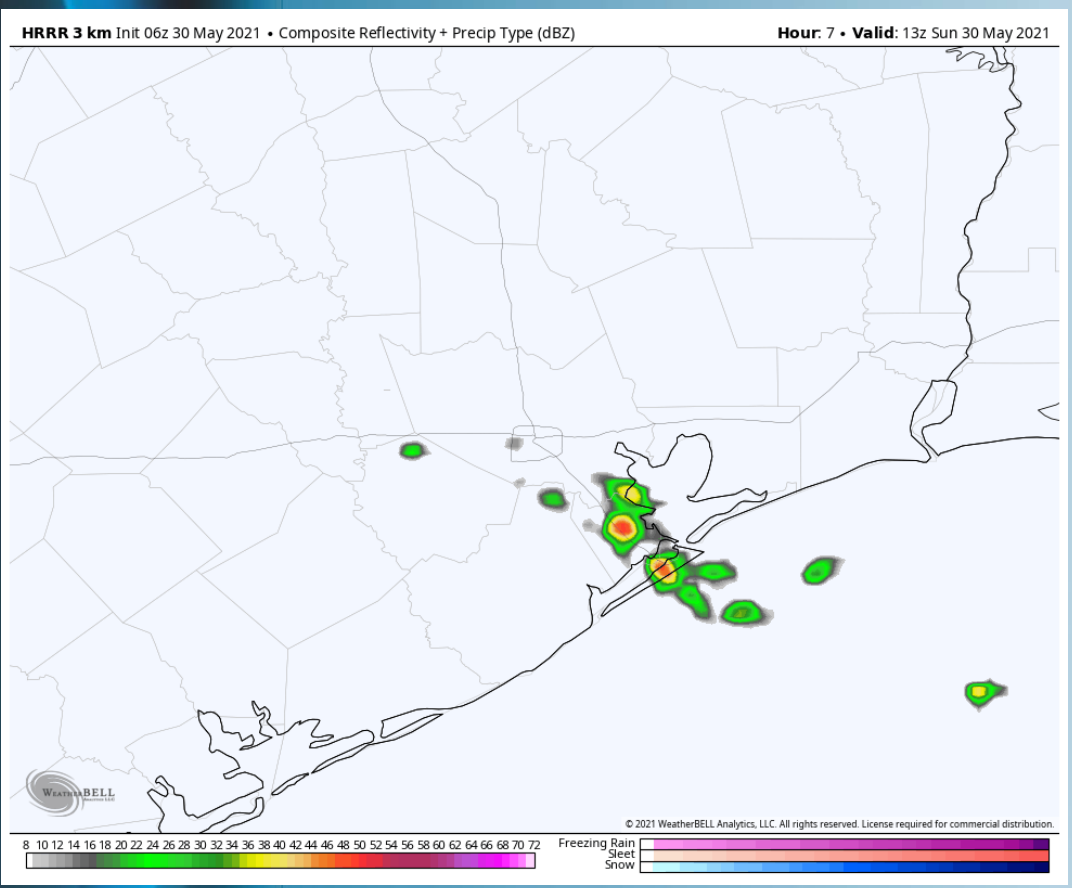
Short-Term Forecast Discussion

- **Spotty chances will be possible through the AM before things begin to clear out after 11 AM, setting up for the remainder of the day to be dry (best chances look to be from 7 AM – 10 AM). With some instability in place, cannot rule out an isolated storm this AM.**
 - **Winds begin to pick up today, especially after 7 AM for location near the boarding station. Winds after 7 AM will start to shift more out of the east with sustained winds around 15 – 25 MPH through about 1 PM for the boarding station. Winds during this time for the other stations look to be closer to 10 – 15 MPH sustained. Winds into the afternoon/ evening begin to calm down a bit to 10 – 15 MPH sustained for the boarding station and 8 – 13 MPH for stations closer to the Buffalo Bayou as the winds take a more SE orientation.**
 - **High temperatures today look to get around ~80 F over open waters today.**
- *No fog anticipated Sunday.*

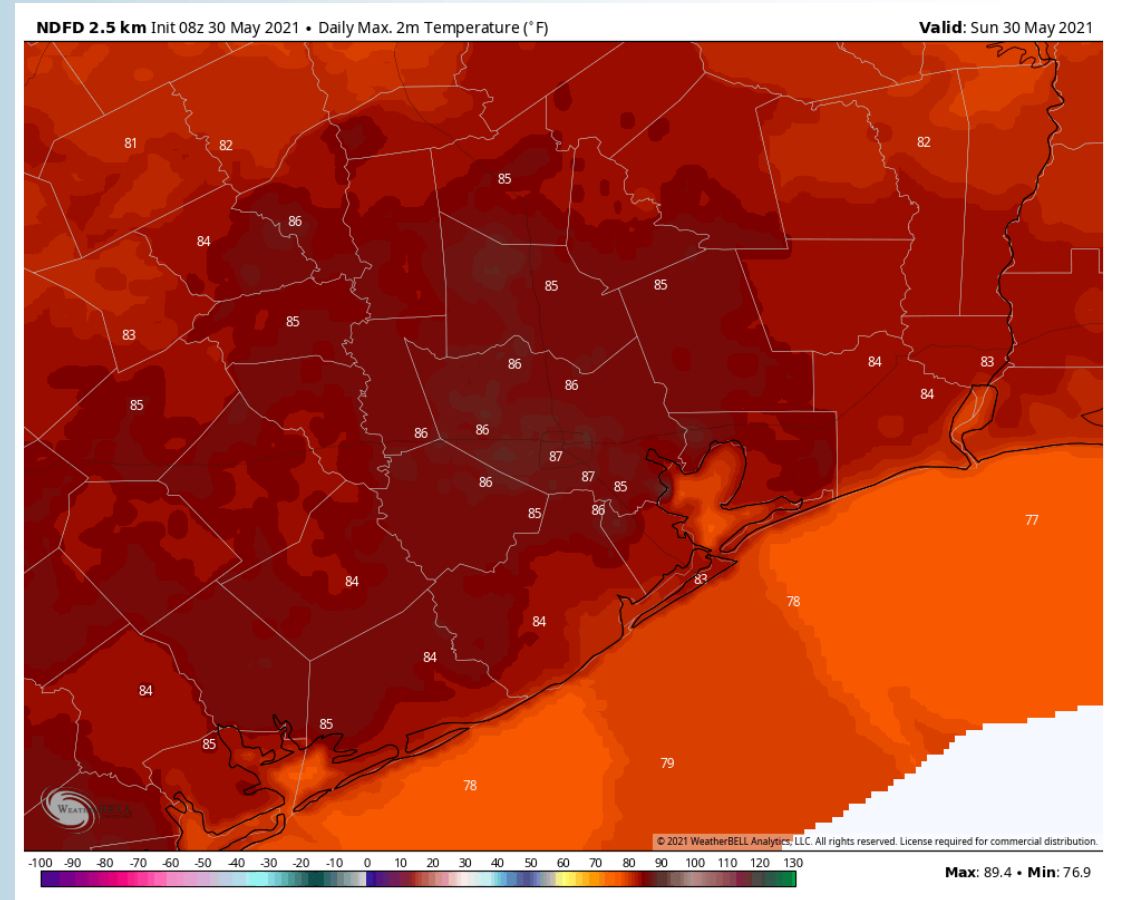
Sustained Winds (12 PM CT)



Simulated Radar Snapshot (8 AM CT)



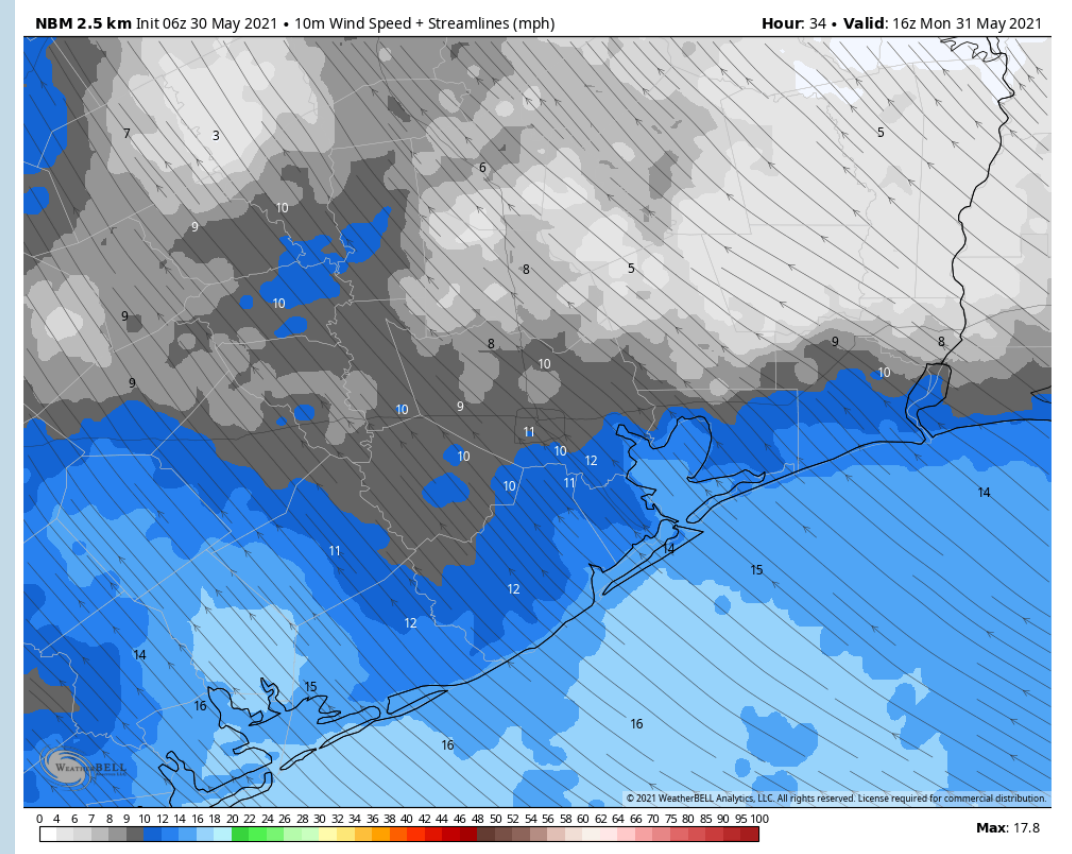
High Temperatures Sunday



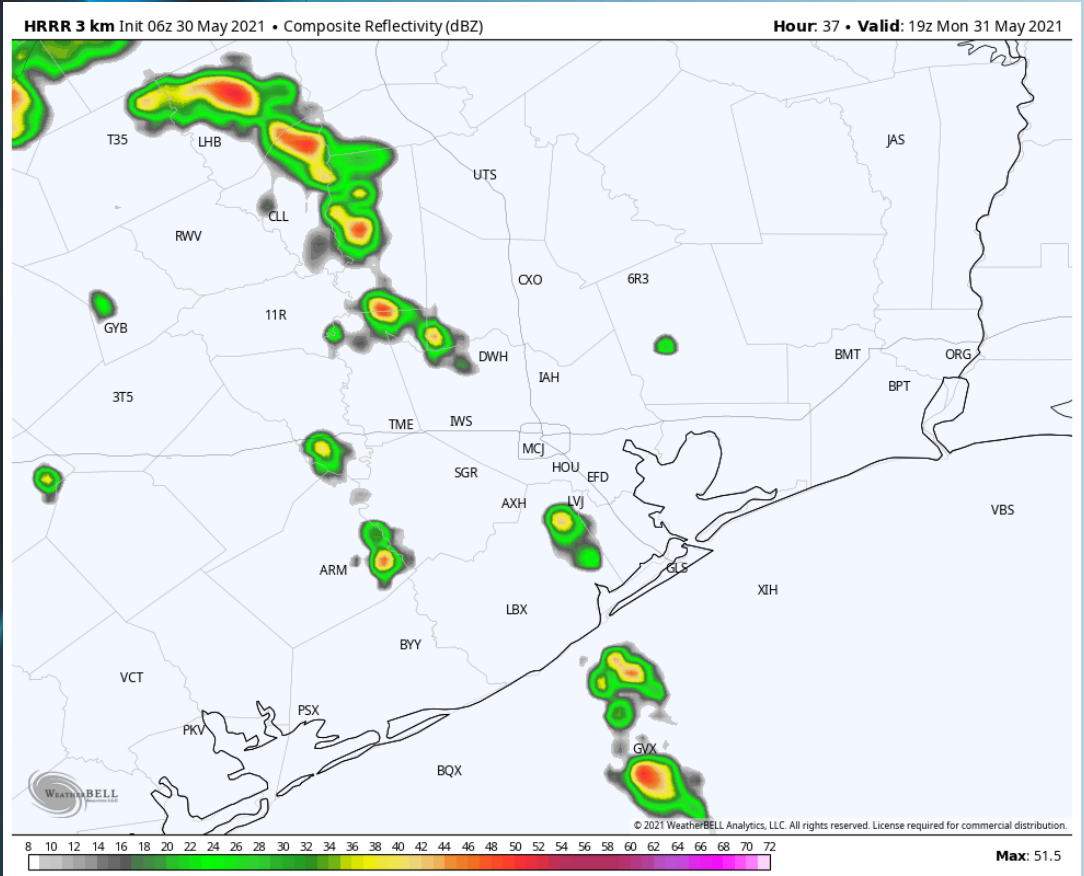
Short-Term Forecast Discussion

- Favoring an overall dry day on Monday. Cannot 100% rule out an isolated shower in the early PM hours. However, the bulk of this activity is expected to be to the north/ west. Will also need to watch a potential storm cluster into central TX getting into Monday afternoon/ evening. At this distance, it is not anticipated to make it to the HOU area but it bares watching.
- Winds are expected to be coming out of the SE the majority of the day, sustained at 10-15 MPH with gusts approaching 20 MPH possible.
- High temps anticipated to be in the upper 70s to lower 80s
 - *No fog expected Monday.*

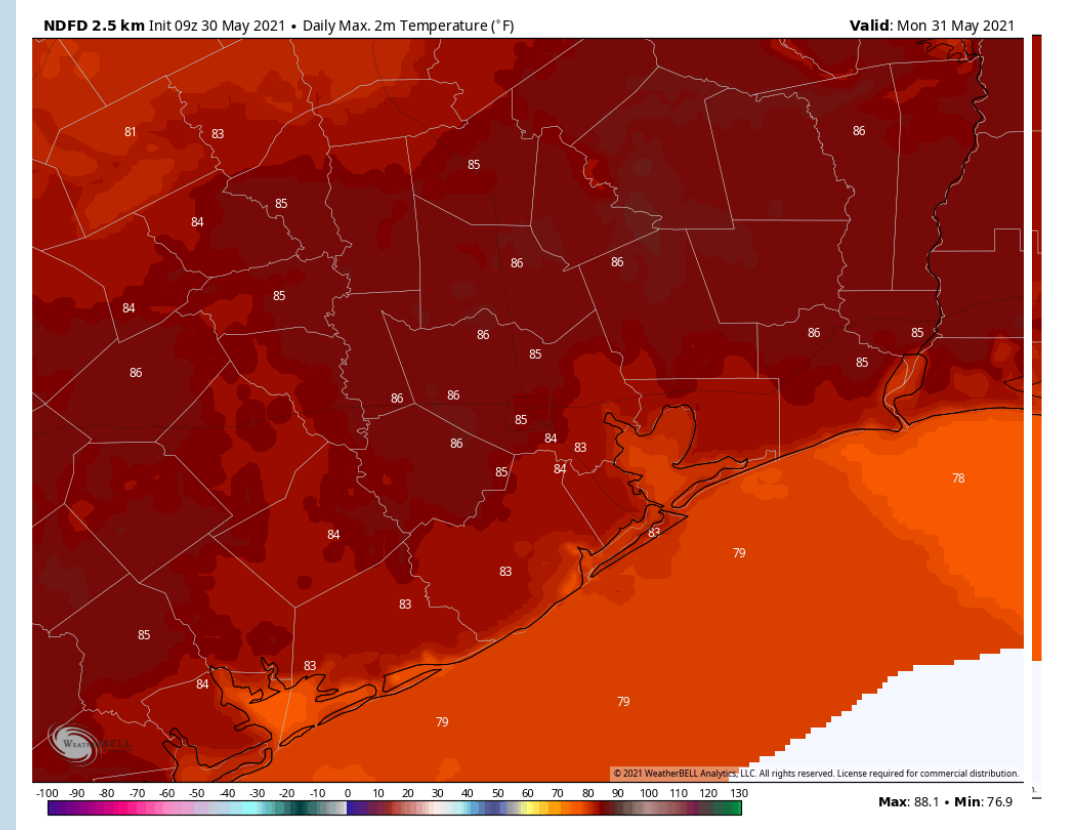
Sustained Winds (11 AM CT)



Simulated Radar Snapshot (2 PM CT)



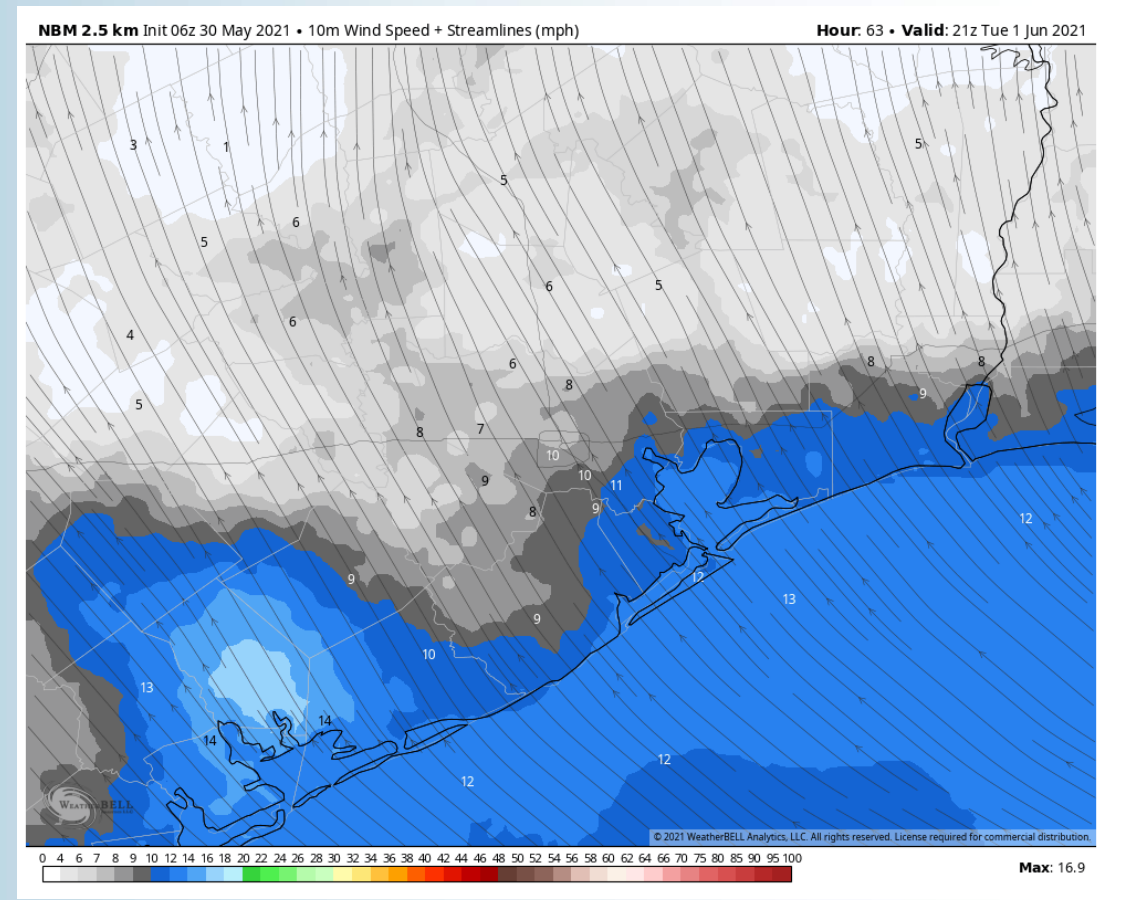
High Temperatures Monday



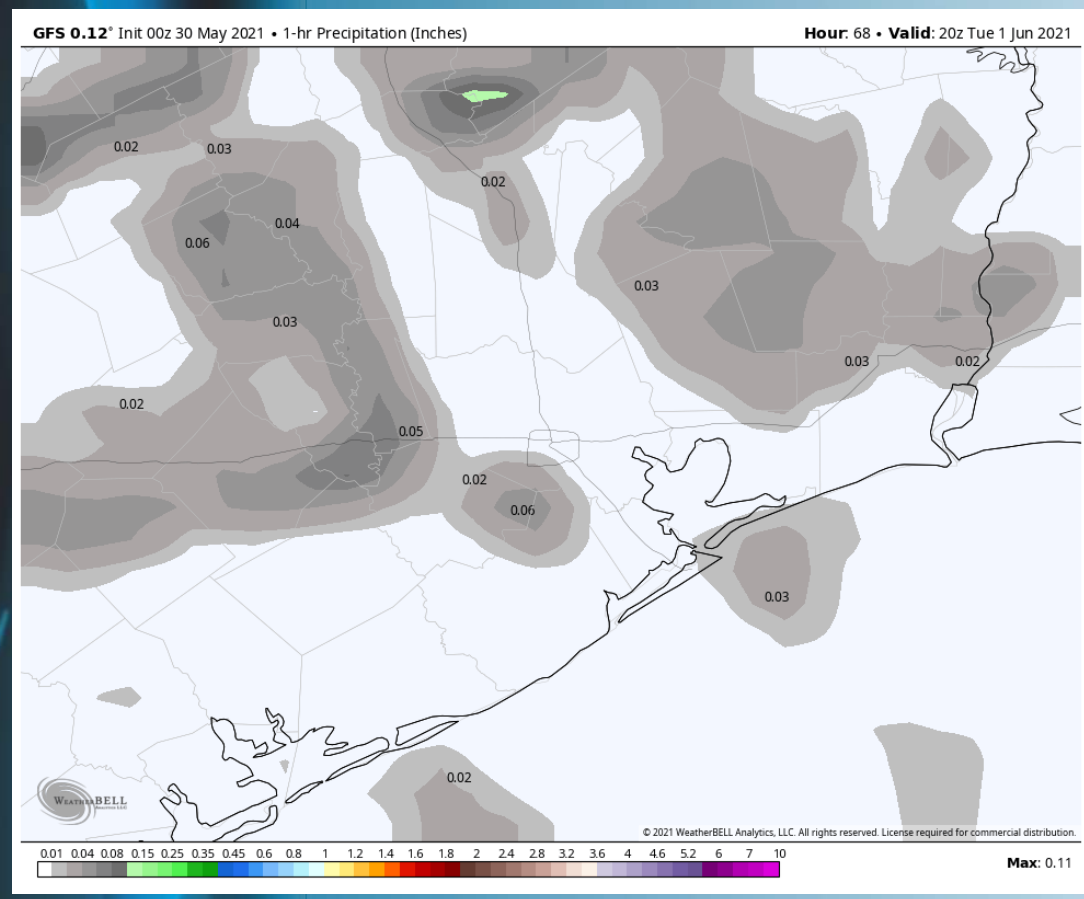
Short-Term Forecast Discussion

- Mostly dry conditions expected on TUE as well with only isolated chances, especially in the PM hours.
- Winds look to continue out of the SE, sustained around 8 – 13 MPH. Gust approaching 18 MPH possible
- High temperatures look to get around ~80 F over open waters on TUE.
 - *No fog expected TUE.*

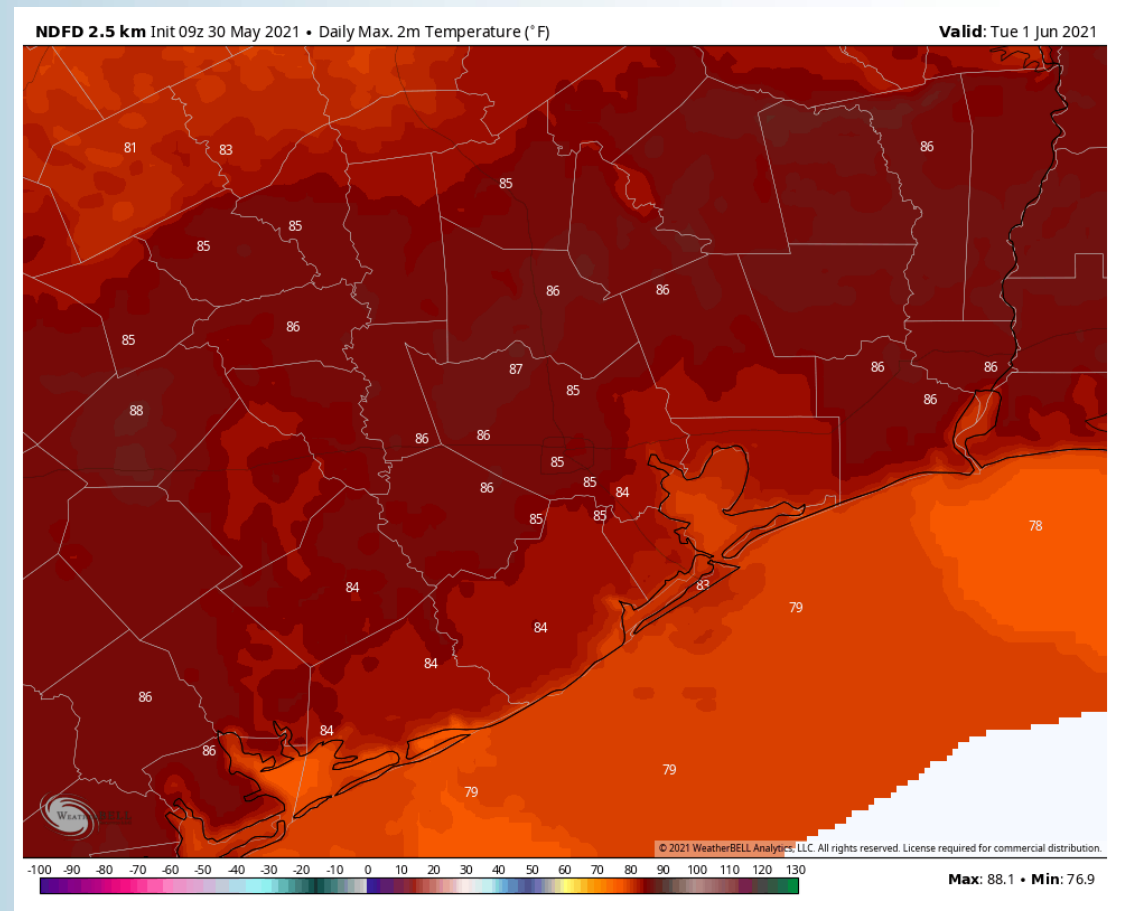
Sustained Winds (4 PM CT)



Simulated Radar Snapshot (3 PM CT)



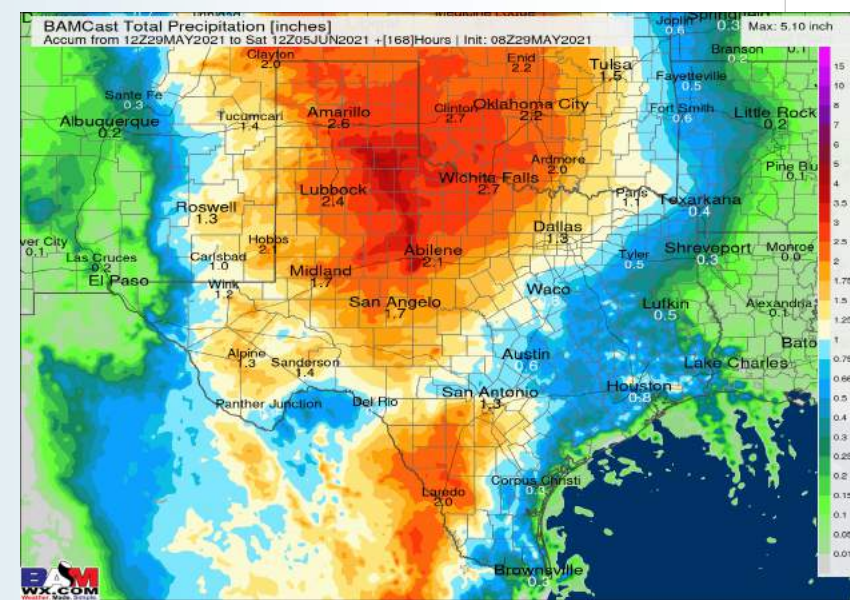
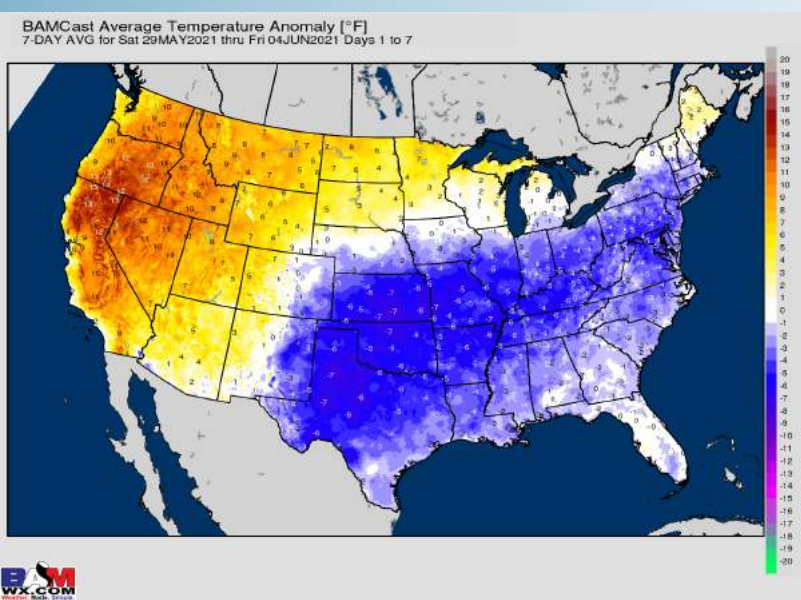
High Temps TUE



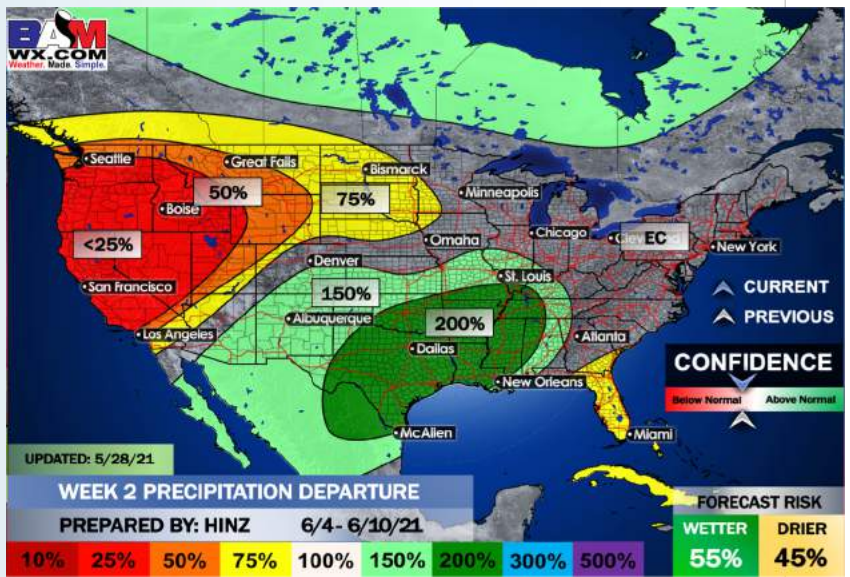
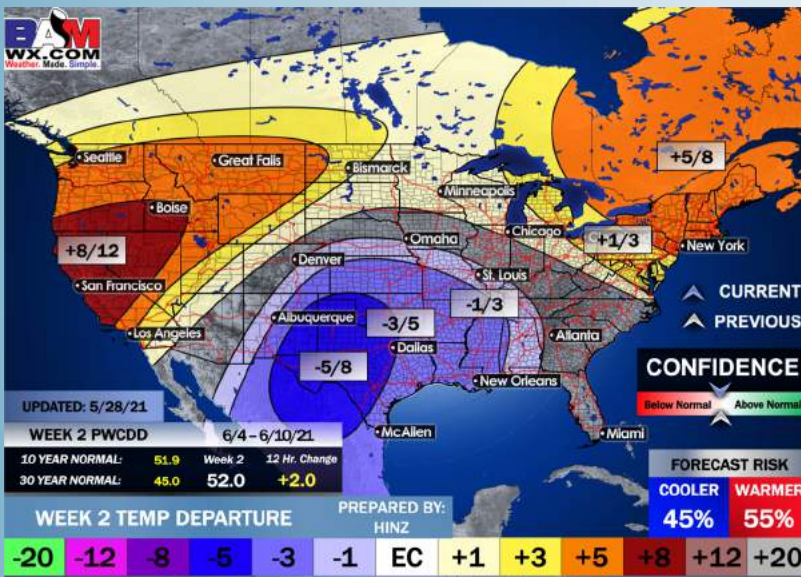
Long-Range Forecast Discussion

- Temps for the next several days look to be sitting a few degrees below average, highs in the upper lower 80s and lows in the upper 70s. The active pattern continues with the highest precip totals likely coming well west of SE TX
- Working into early June, we are favoring below normal temps for this time of year and for precipitation to stay on the active side of things. Increased moisture risks likely continue across the Southern US.
- The weeks 3/4 (mid to late June) period likely features more cooler than normal temperatures and above normal moisture, similar to our current week 2 thoughts.

Week 1 Forecast



Week 2 Forecast



Weeks 3/4 Forecast

