

Updated: 5:40 AM CT Tuesday, March 16, 2021

- **As always, please do not hesitate to reach out to us with any forecast questions via the chat option on the Weather Porthole or our on call number, **(317)-560-8122** press 1 for forecast questions.**



Visibility Report

Tuesday, March 16, 2021

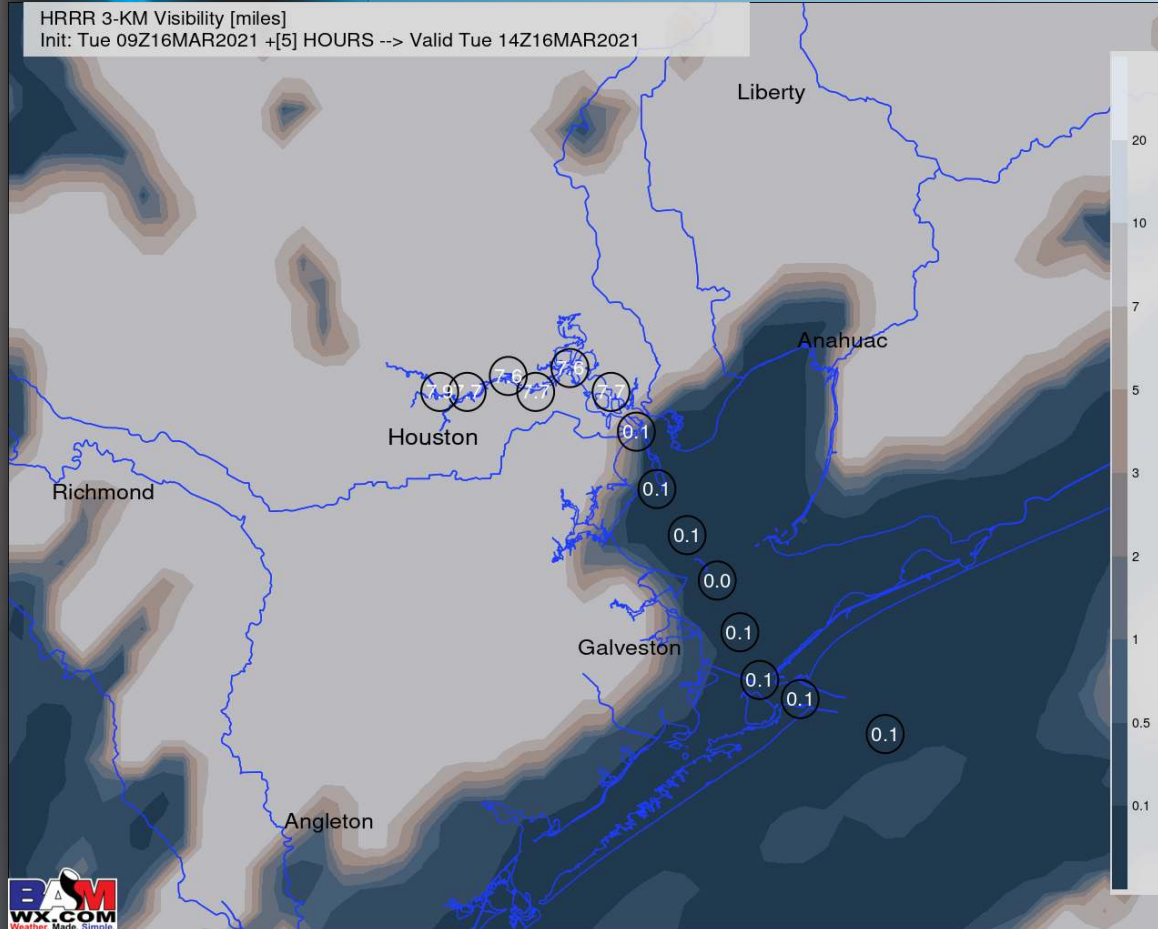
HOURLY VISIBILITY BREAKDOWN (in miles)

Time	03-16-2021 Tue 4am	03-16-2021 Tue 5am	03-16-2021 Tue 6am	03-16-2021 Tue 7am	03-16-2021 Tue 8am	03-16-2021 Tue 9am	03-16-2021 Tue 10am	03-16-2021 Tue 11am	03-16-2021 Tue 12pm	03-16-2021 Tue 1pm	03-16-2021 Tue 2pm	03-16-2021 Tue 3pm	03-16-2021 Tue 4pm	03-16-2021 Tue 5pm	03-16-2021 Tue 6pm	03-16-2021 Tue 7pm	03-16-2021 Tue 8pm	03-16-2021 Tue 9pm	03-16-2021 Tue 10pm	03-16-2021 Tue 11pm	03-17-2021 Wed 12am	03-17-2021 Wed 1am	03-17-2021 Wed 2am	03-17-2021 Wed 3am	03-17-2021 Wed 4am	03-17-2021 Wed 5am	03-17-2021 Wed 6am	03-17-2021 Wed 7am	03-17-2021 Wed 8am	03-17-2021 Wed 9am	03-17-2021 Wed 10am	03-17-2021 Wed 11am	03-17-2021 Wed 12pm	03-17-2021 Wed 1pm	03-17-2021 Wed 2pm	03-17-2021 Wed 3pm	
Houston Pilots N - 610 Bridge	7.594	7.317	6.766	7.602	7.543	7.722	7.848	8.442	9.107	7.331	7.419	8.130	8.989	10.00	9.823	10.00	10.00	7.92	5.93	5.93	6.89	6.92	6.92	6.92	6.92	6.92	5.89	5.89	4.90	4.90	6.89	6.89	7.52	7.92	10.00	10.00	
Houston Pilots M - Kinder 1	7.596	7.254	5.593	7.598	7.389	7.167	7.813	8.432	9.021	6.426	7.117	8.106	8.983	9.985	9.668	10.00	10.00	8.98	5.93	5.93	6.89	6.92	6.92	6.92	7.84	6.92	5.89	5.89	4.90	4.90	6.89	6.89	7.92	7.92	10.00	10.00	
Houston Pilots L - Greens Bayou	7.595	7.515	3.876	7.585	7.087	5.703	7.725	8.459	8.798	5.525	6.078	7.774	8.924	9.715	9.443	10.00	10.00	9.03	5.93	5.93	6.89	6.92	6.92	6.92	7.95	6.92	5.89	5.89	4.90	4.90	6.89	6.89	7.09	7.65	10.00	10.00	
Houston Pilots K - Shell Crude	7.516	7.423	3.002	7.581	5.773	4.985	7.857	8.449	8.751	5.100	4.426	8.260	9.177	9.899	9.453	10.00	10.00	9.03	5.93	5.93	6.89	6.92	6.92	6.92	7.95	6.92	5.89	5.89	4.90	4.90	6.89	6.89	6.89	7.13	10.00	10.00	
Houston Pilots J - Lynchburg Ferrries	7.555	4.744	2.472	7.250	5.793	5.028	6.958	8.108	8.389	6.065	4.630	8.059	9.238	9.706	9.255	10.00	8.73	7.97	4.41	4.51	6.66	6.42	6.94	7.21	7.70	7.21	6.45	6.45	5.71	5.71	7.45	7.45	7.45	5.61	9.41	10.00	
Houston Pilots I - Exxon 3	6.739	0.819	1.260	3.839	2.633	2.511	2.995	4.271	6.375	2.762	2.710	7.608	8.925	8.988	8.471	10.00	9.96	8.49	5.93	5.93	6.62	6.92	6.92	6.92	7.66	6.81	5.89	5.35	4.90	4.90	6.89	6.89	6.89	6.89	9.03	10.00	
Houston Pilots H - Morgans Point	2.444	0.039	0.152	0.400	0.201	0.069	0.062	0.106	0.939	0.710	1.206	6.765	8.040	8.042	7.698	10.00	6.28	3.70	2.74	3.06	4.56	5.74	7.53	7.53	6.39	7.07	7.07	6.64	6.60	6.60	7.97	8.07	8.07	4.32	8.24	10.00	
Houston Pilots G - 75/76	0.071	0.036	0.050	0.021	0.025	0.032	0.046	0.058	0.072	0.463	0.690	5.041	7.102	7.461	7.179	6.93	4.02	0.27	0.12	0.76	2.51	5.97	8.03	8.03	5.42	8.03	8.03	8.03	8.00	8.00	8.00	9.03	9.03	4.02	6.01	9.03	
Houston Pilots F - 63/64	0.046	0.054	0.042	0.007	0.032	0.039	0.035	0.063	0.125	0.103	2.541	7.710	7.787	7.591	7.664	6.93	4.02	0.12	0.12	0.53	3.26	7.51	8.03	7.02	5.01	8.03	8.03	8.03	8.00	8.00	8.00	8.05	9.03	4.93	6.01	9.03	
Houston Pilots E - 51/52	0.042	0.035	0.020	0.022	0.037	0.040	0.046	0.096	0.097	0.409	4.986	7.648	7.668	7.617	7.463	5.16	4.02	0.12	0.12	0.12	4.02	8.03	8.03	5.51	5.01	8.03	8.03	8.03	8.00	8.00	8.00	8.06	9.03	4.98	6.01	8.11	
Houston Pilots D - 37/38	0.054	0.046	0.014	0.035	0.029	0.034	0.043	0.097	0.065	2.774	7.587	7.604	7.612	7.585	7.621	4.94	4.02	0.12	0.12	0.12	4.02	7.25	7.59	3.98	5.01	8.03	8.03	8.03	8.00	8.00	8.00	8.00	8.00	8.00	5.87	6.01	6.24
Houston Pilots C - 25/26	0.061	0.054	0.039	0.041	0.049	0.051	0.065	0.142	0.951	6.975	7.727	7.827	7.824	7.709	7.684	4.94	4.31	0.12	0.12	0.12	4.02	7.00	7.00	2.92	5.01	8.03	8.03	8.03	8.00	8.00	8.00	8.00	8.00	8.00	6.01	4.98	5.29
Houston Pilots B - 11/12	0.054	0.048	0.032	0.050	0.043	0.055	0.160	0.133	1.927	5.175	7.630	7.648	6.588	5.805	6.367	2.08	3.15	0.12	0.12	0.12	4.61	7.00	7.00	1.41	5.01	8.03	8.03	8.03	8.00	8.00	8.00	8.00	8.00	8.00	6.01	4.98	3.15
Houston Pilots A - 1 & 2 Bravo	0.040	0.051	0.029	0.062	0.023	0.040	0.067	0.063	5.807	5.369	7.581	5.471	1.872	1.432	6.506	1.35	0.87	0.12	0.12	0.12	6.71	7.00	7.00	2.58	6.72	8.03	8.03	8.03	8.00	8.00	8.00	8.00	8.00	6.96	6.01	4.98	0.12

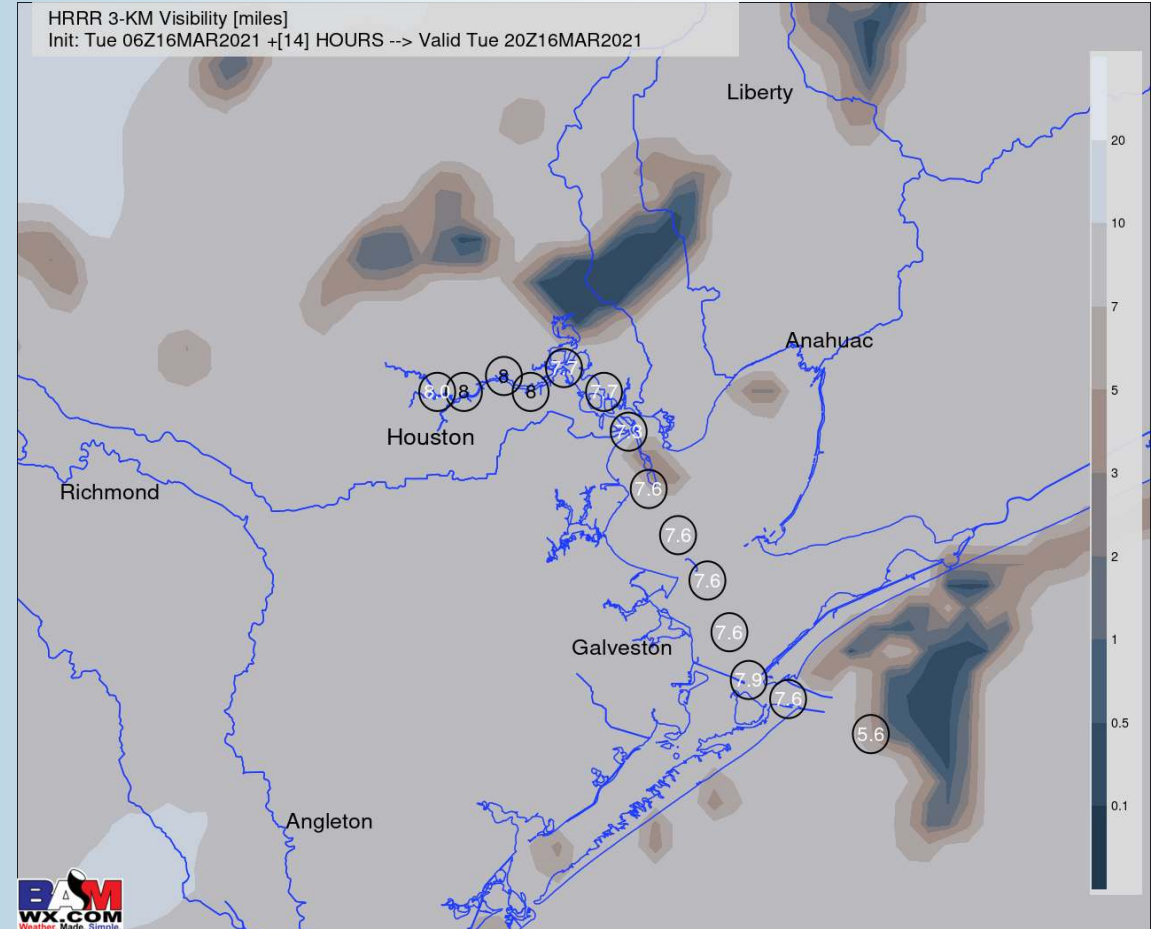
Fog Report

Tuesday, March 16th, 2021

VISIBILITY (9AM CT MON)



VISIBILITY (3 PM CT TUE)



CONFIDENCE

Below
Normal

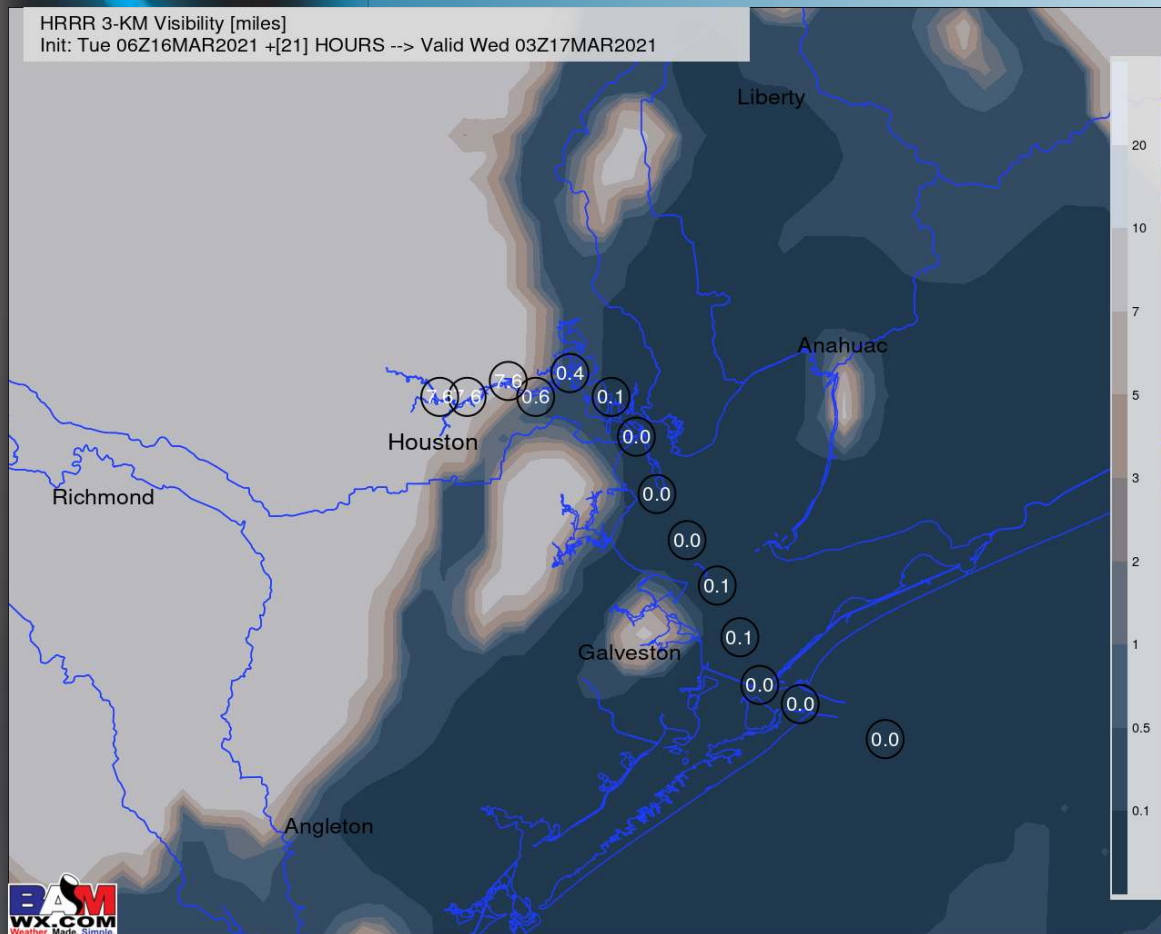
Above
Normal

➤ **Dense fog is expected to continue to be impactful this morning, especially from Morgans Point south to 1 & 2 Bravo and points west of the Houston Metro area through 11am / noon CT...tapering off after that period as the winds start to increase from the South.**

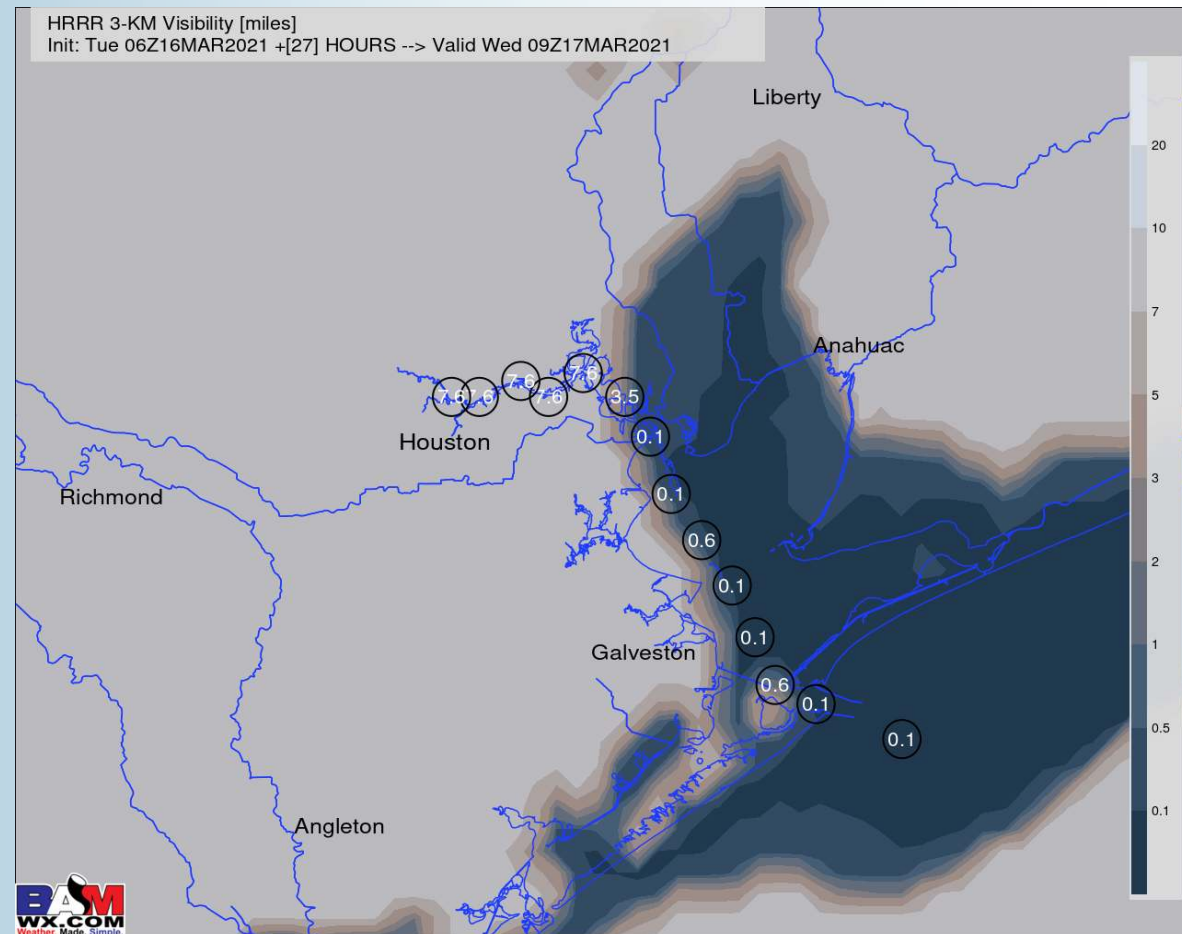
Fog Report

Wednesday, March 17th, 2021

VISIBILITY (10 PM CT TUE)



VISIBILITY (4 AM CT WED)



CONFIDENCE

Below
Normal

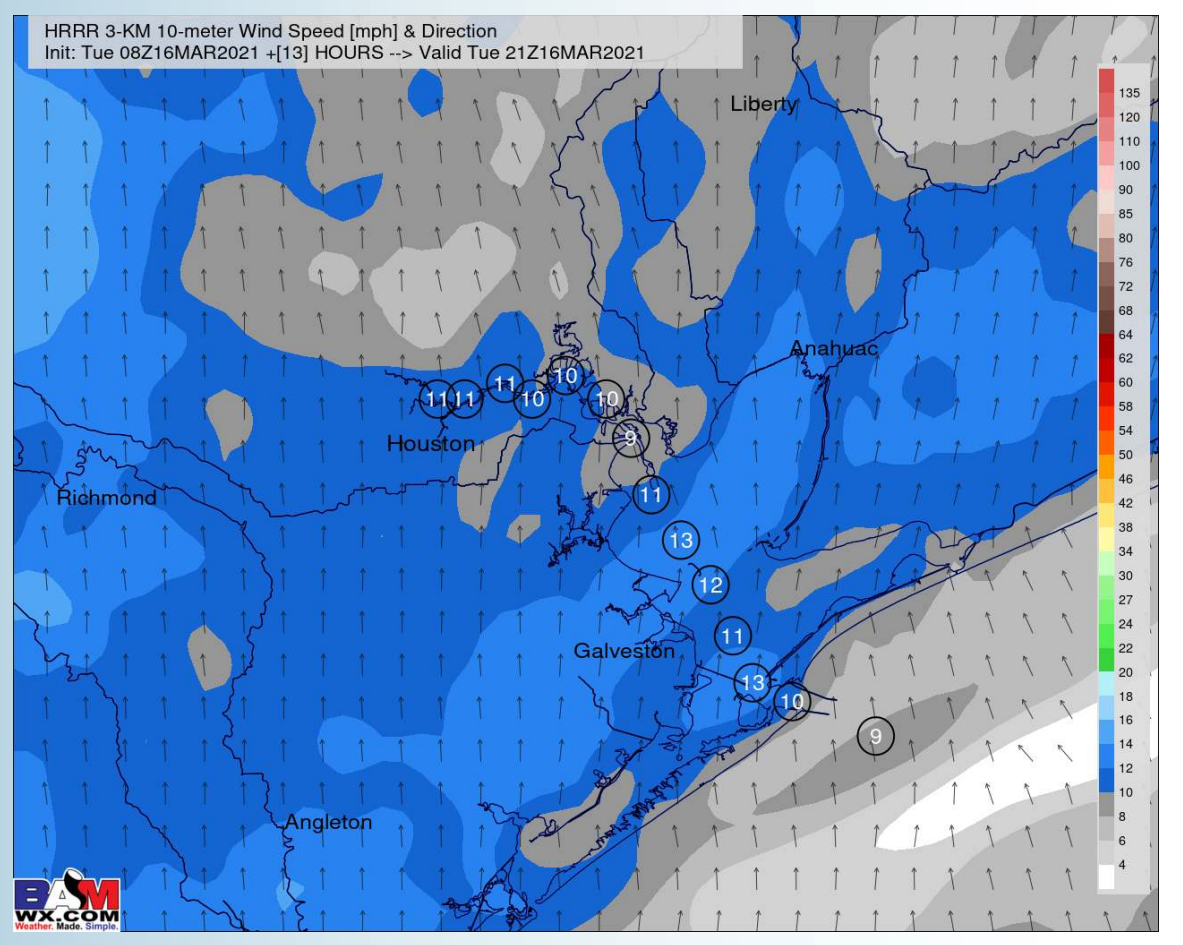
Above
Normal

- **Similar to our threat this morning, tonight into Wednesday morning's potential fog threat looks to be focused primarily from Morgans Point to 1 & 2 Bravo locations, less inclusive of the Houston Metro area.**
- **Still lower confidence on the exact initial timing of the fog developing tonight, which we will need to iron out in the PM update today...however, confidence is elevated more than yesterday at the threat carrying over after midnight tonight through 4-5 AM CT Wednesday morning.**

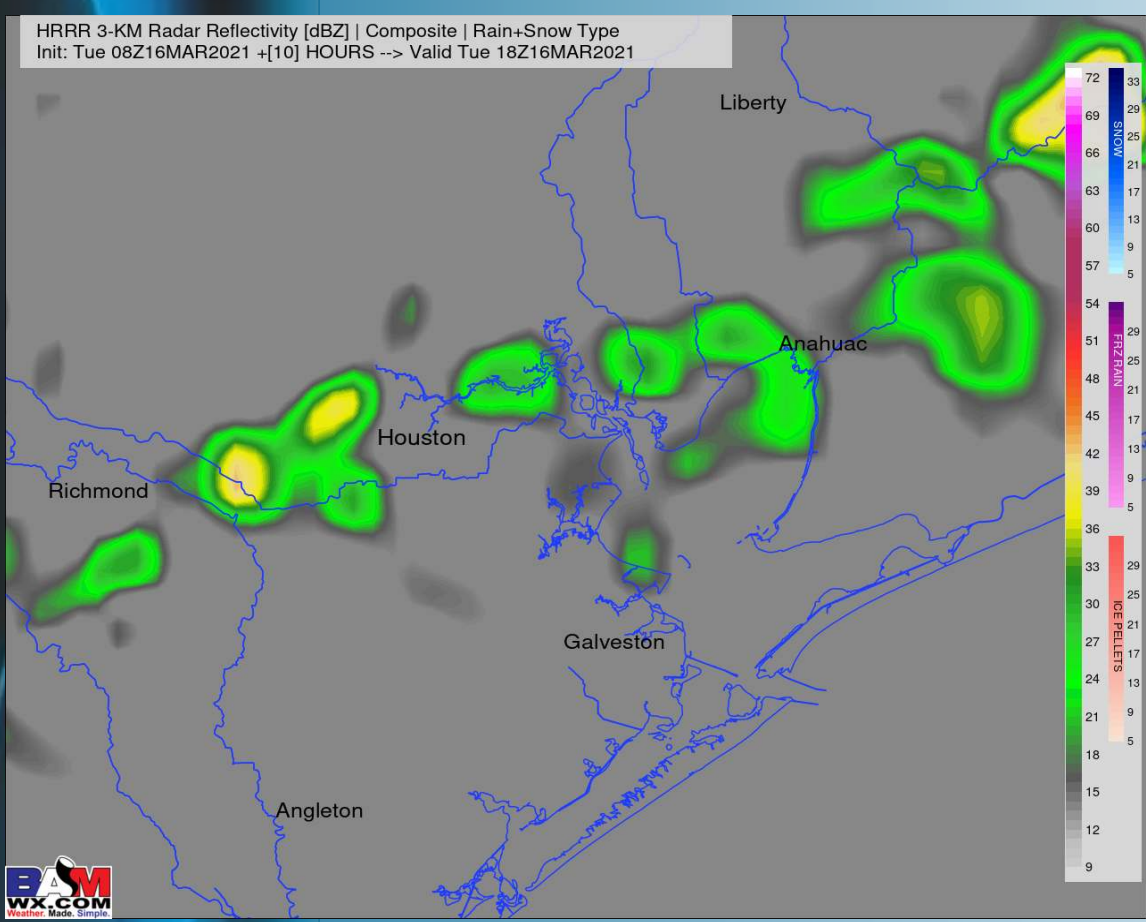
Short-Term Forecast Discussion

- A few light showers will be possible, moving southeast to northwest, from areas 1 & 2 Bravo north to the Houston metro from 9 AM – 1 PM CT; these should be quite light in nature.
- Winds will be light this morning, but pick up after the boundary passes mid-day. After ~1-4 PM expecting winds to increase to 8-13 MPH with gusts 13-18 MPH possible out of the South.
- Today will see temps in the lower to mid 70s for most, closer to 80 near the HOU metro
- *See fog slide above for more information on today's Fog threats.*

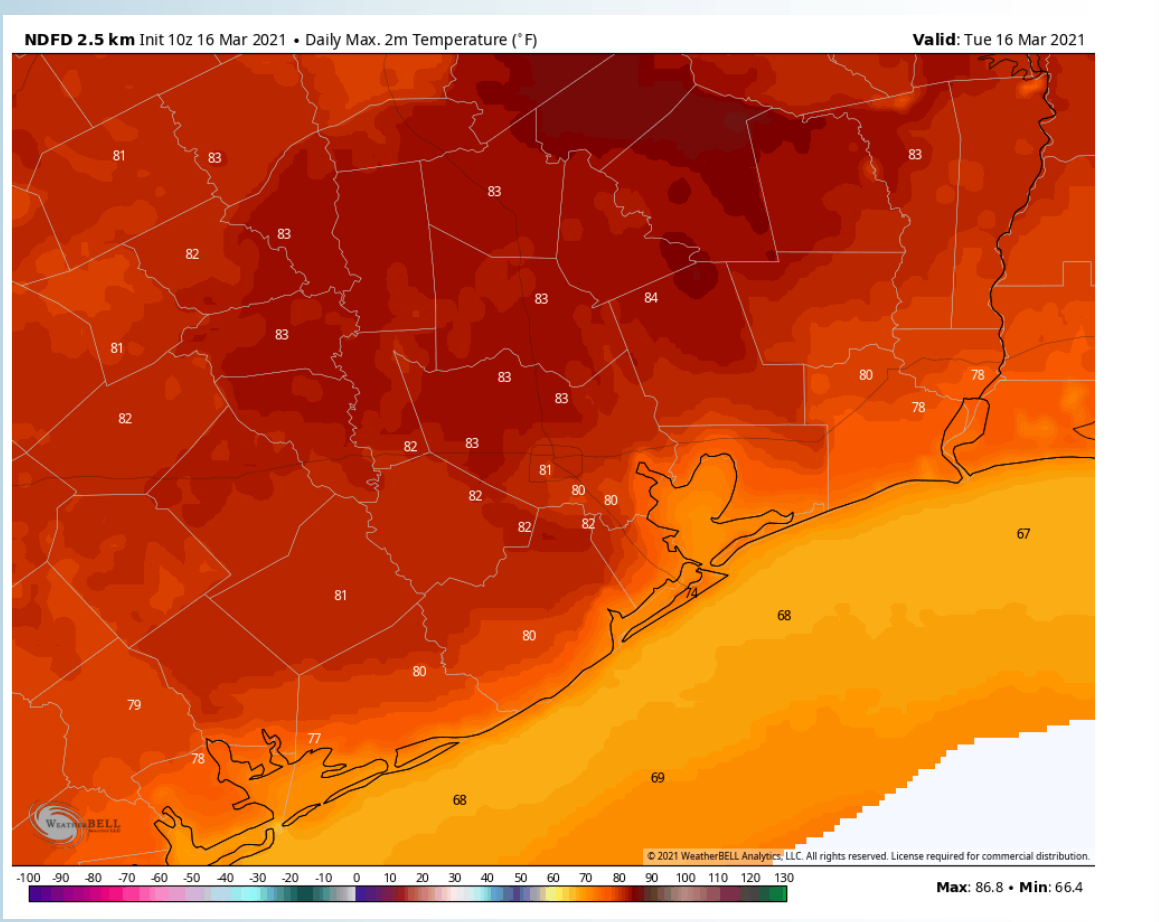
Sustained Winds (4 PM CT)



Simulated Radar Snapshot (1 PM CT)



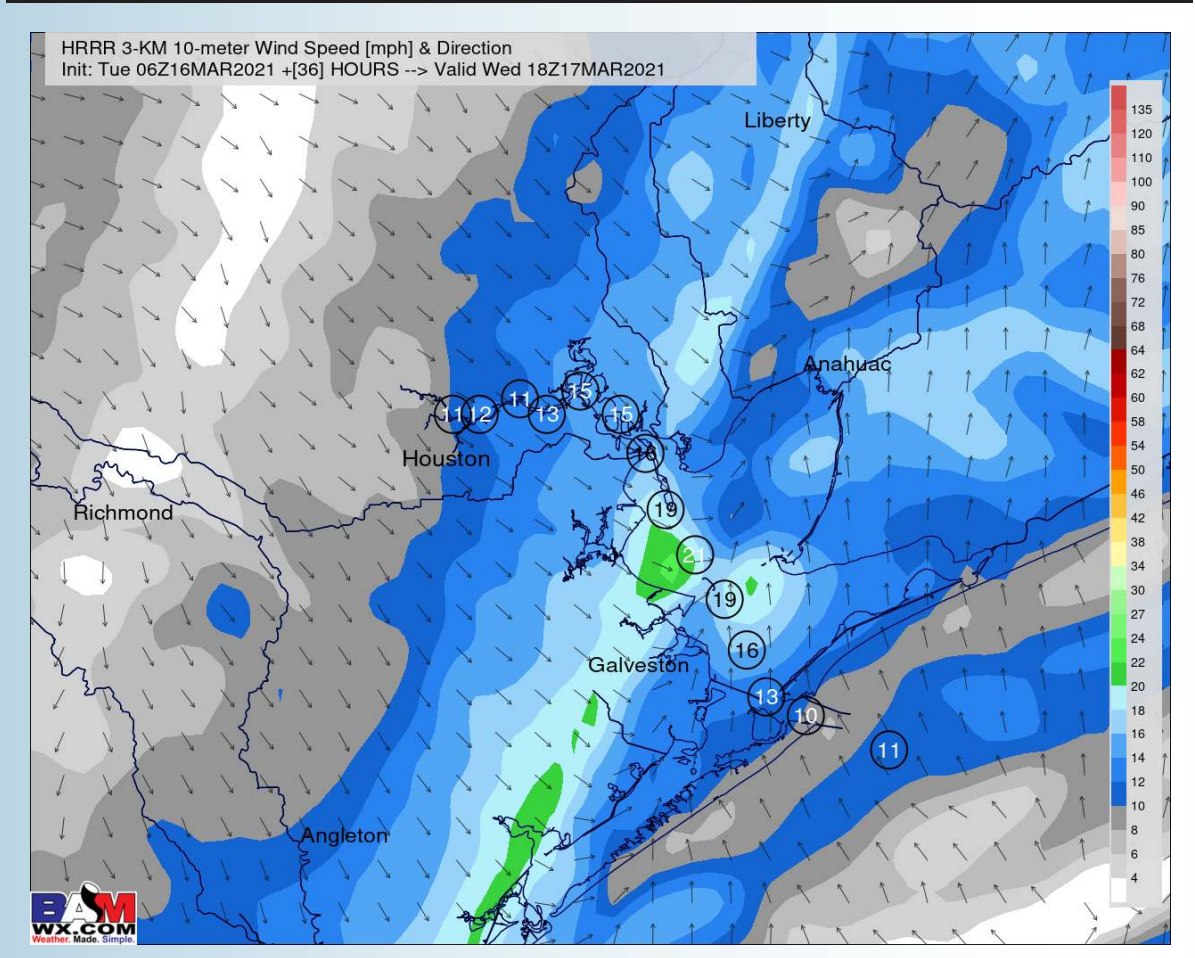
High Temperatures Today



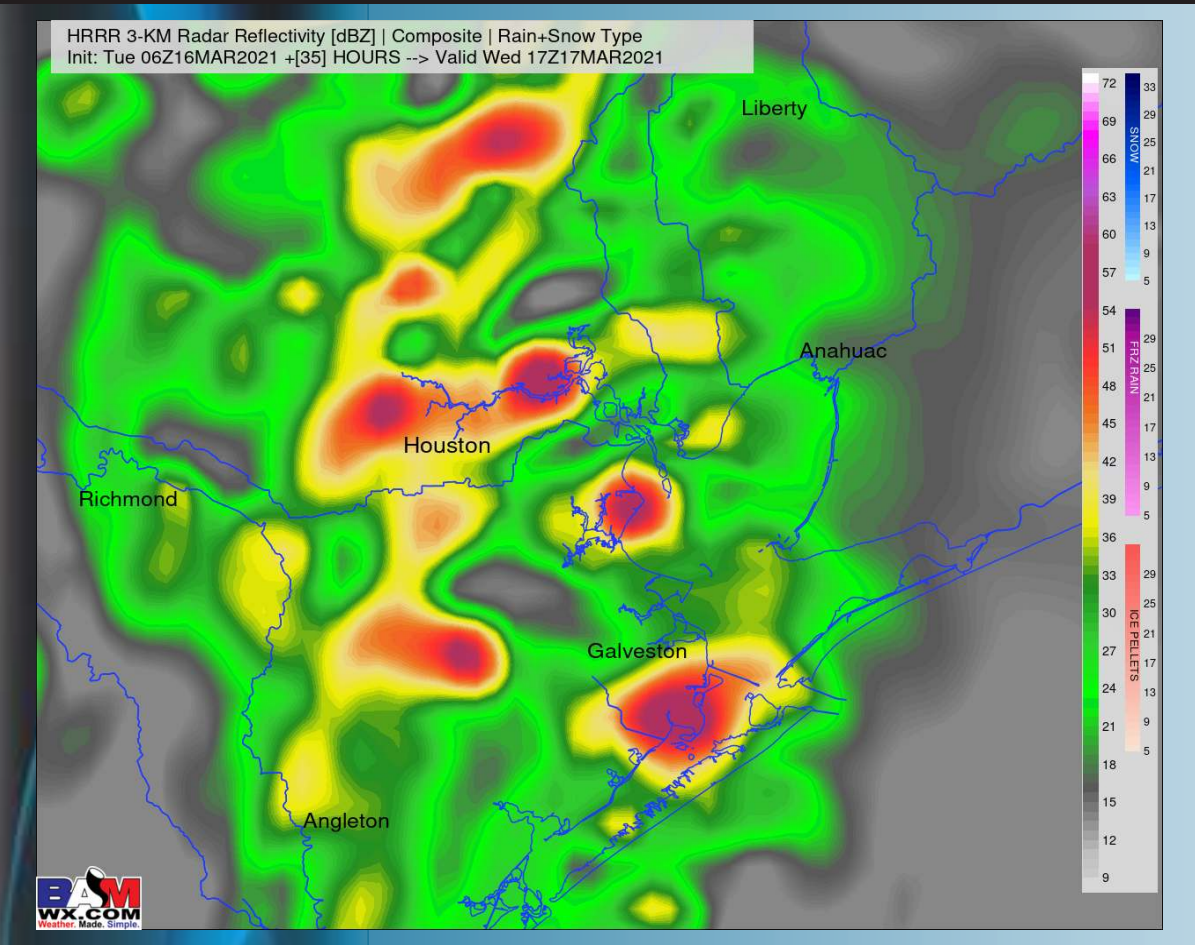
Short-Term Forecast Discussion

- A frontal boundary will pass through the area in the late morning hours Wednesday morning to early PM, bringing with it a wave of showers and potentially storms that could bring through locally strong wind gusts of 35 MPH. **Can't rule out a severe storm with wind/hail being the main threats, isolated tornado threat looks better north, but worth keeping an eye on.**
- Winds are anticipated to be 8-13 MPH with gusts 15-25 MPH from the SSE. Gustiest of winds exceeding the above thresholds are most likely upon the cold front passage ~11AM – 1PM. Winds behind this front look to calm/ shift NW with sustained winds at 5-10 MPH.
- High Temperatures look to get into the low 70s over open waters, with upper 70s inland.
- *Please refer to the slide above for the potential for fog increasing into early Wednesday morning, prior to the cold front moving through the area.*

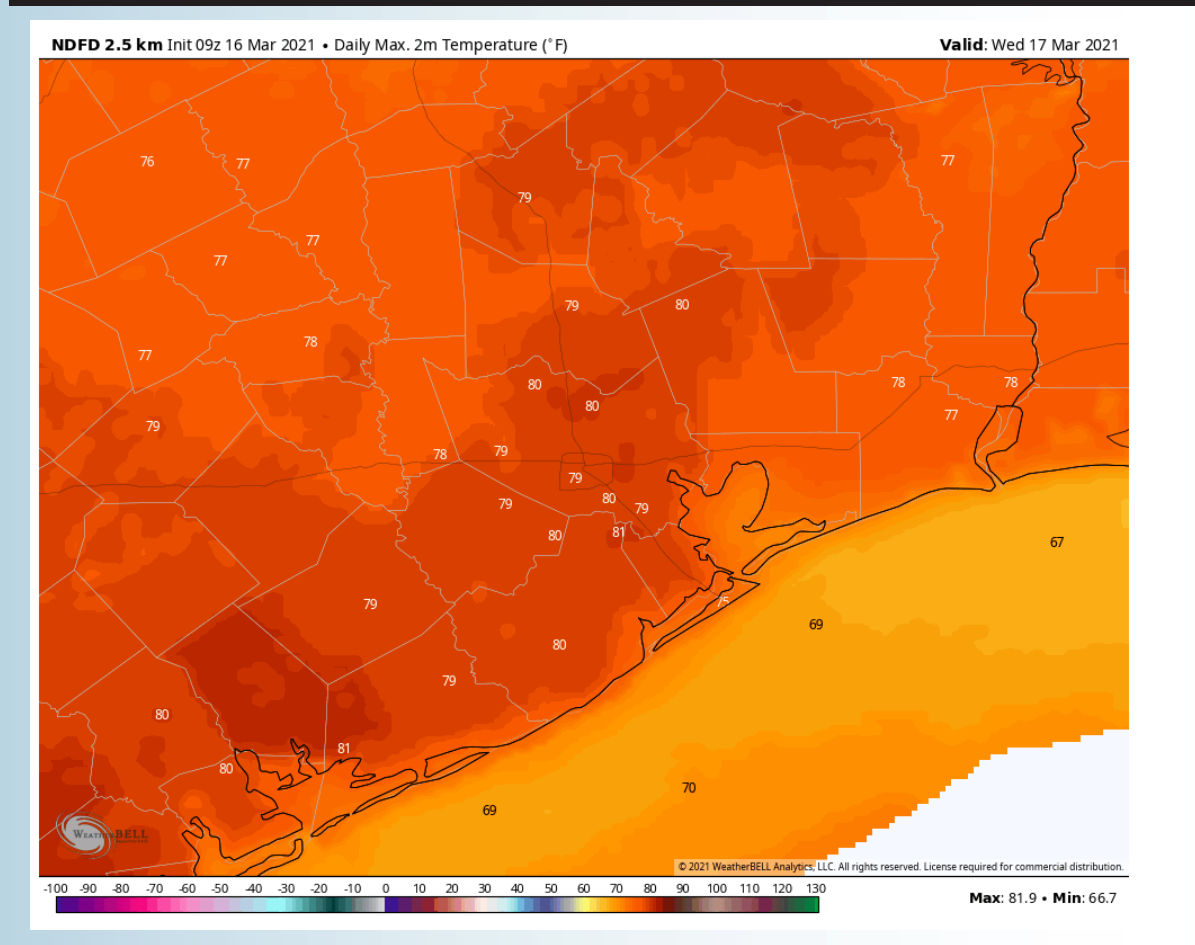
Sustained Winds (1 PM CT)



Simulated Radar Snapshot (12 PM CT)



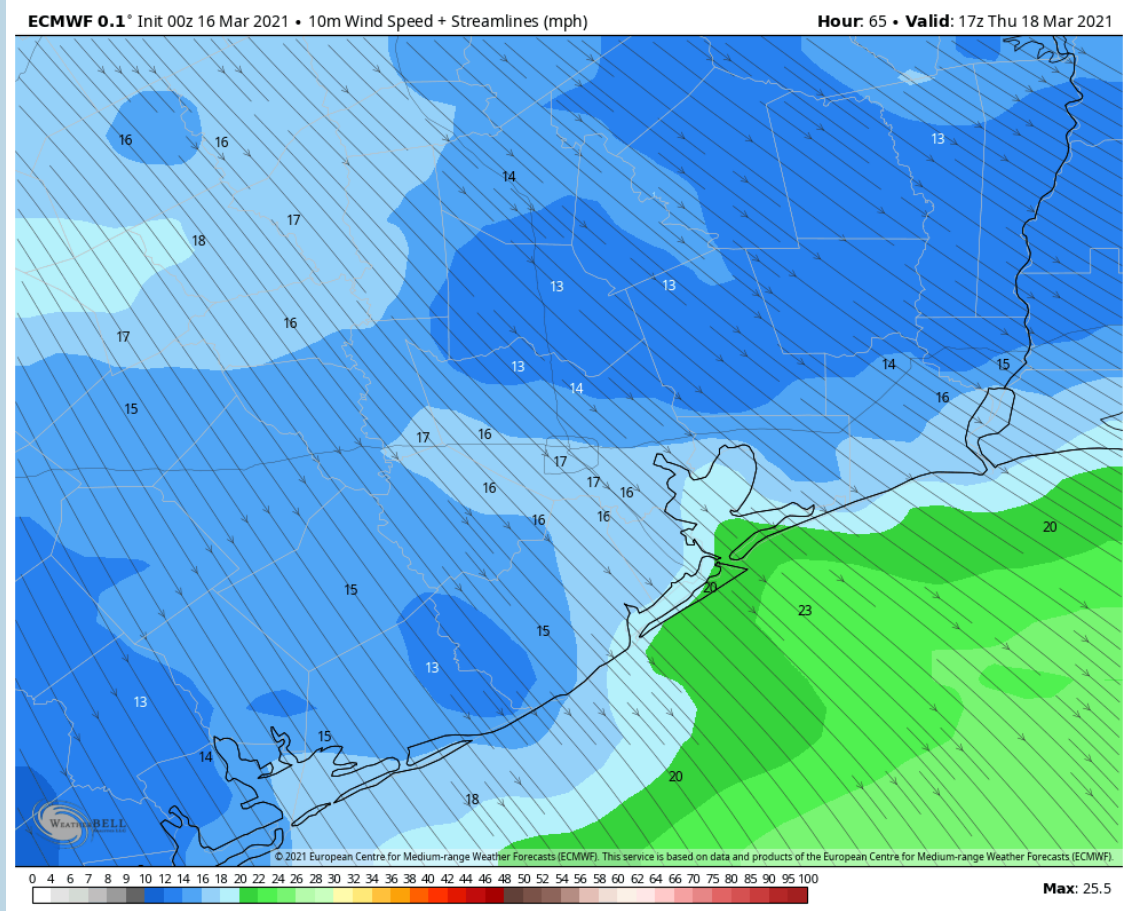
High Temperatures Wed.



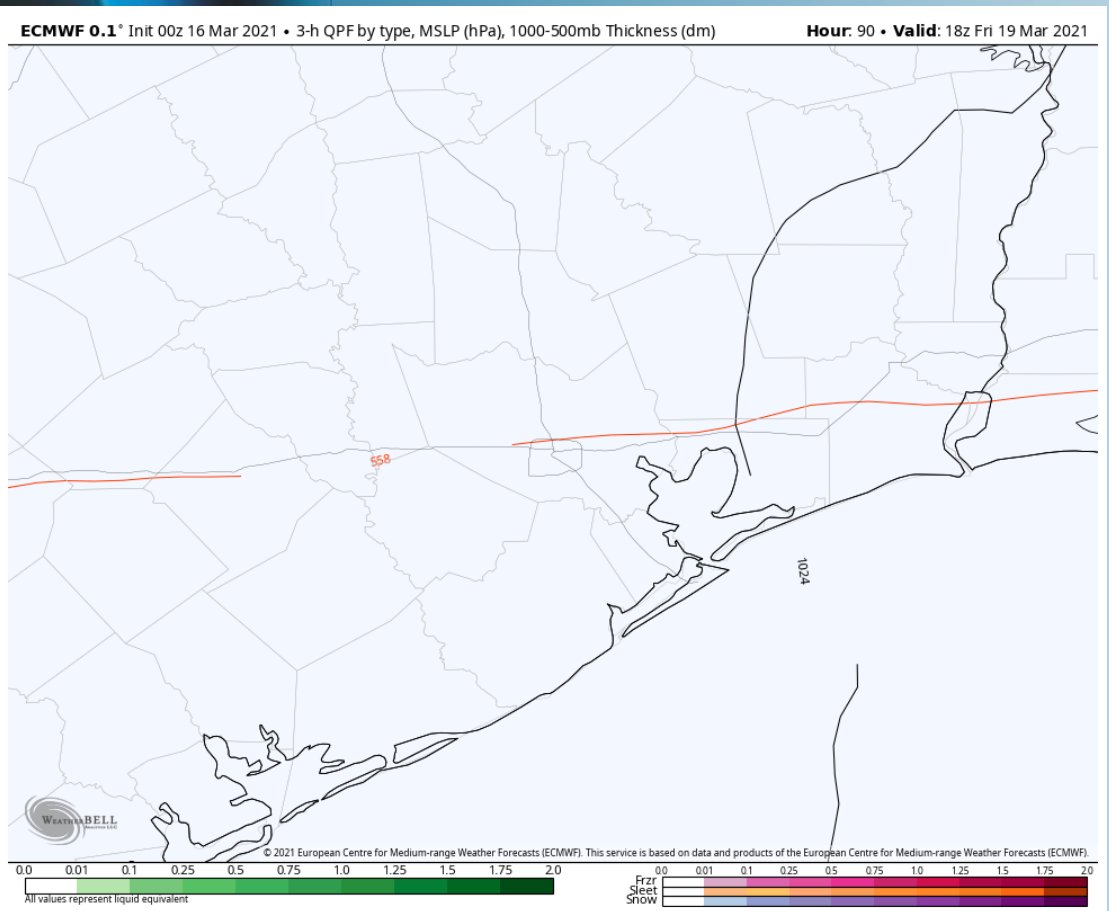
Short-Term Forecast Discussion

- Right now, Thursday is expected to be a dry day.
- Winds are anticipated to be out of the Northwest at 13-18 MPH sustained gusting up to 20-25 MPH at times. Winds look to calm as we approach sunset Thursday night into the overnight.
- High Temperatures look to get into the mid to upper 60s over the Boarding Stations, near 70F towards the HOU Metro.
- *At this distance, fog is not anticipated for Thursday morning.*

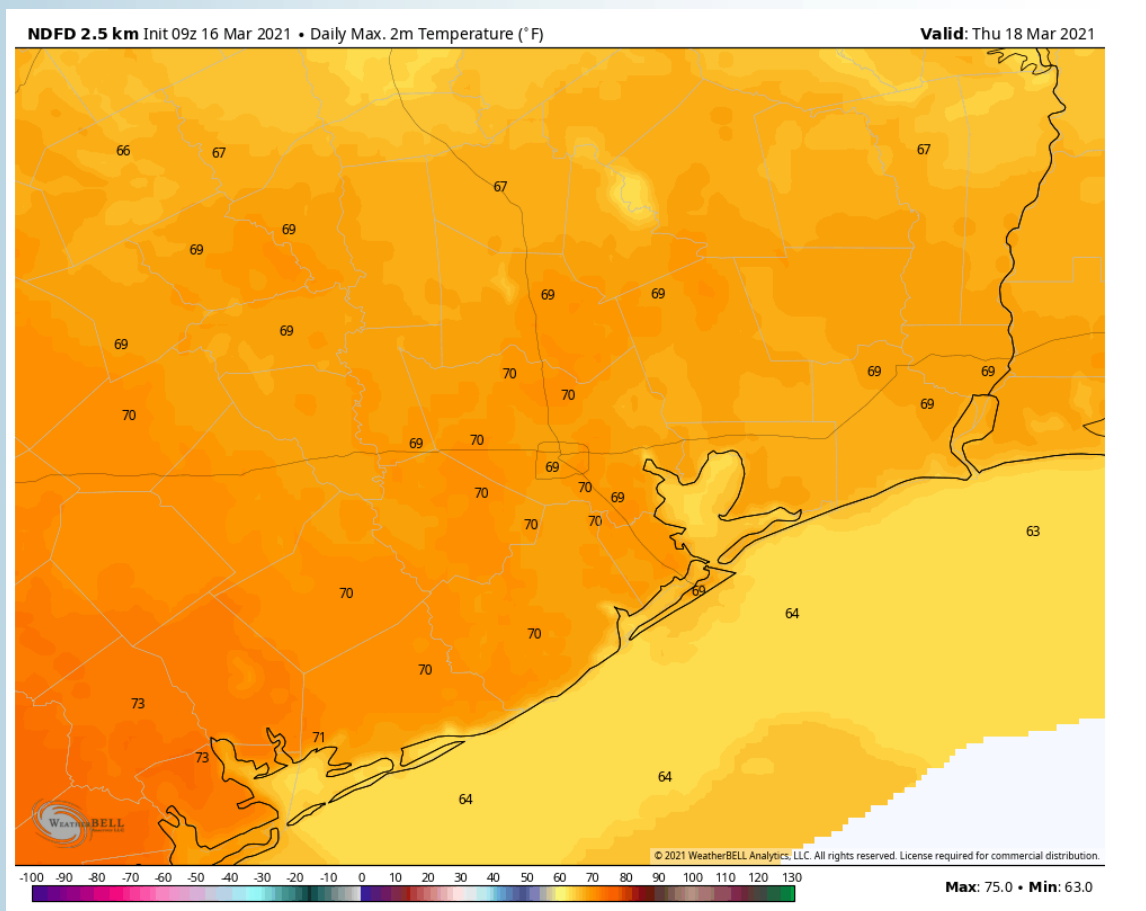
Sustained Winds (12 PM CT)



Simulated Radar Snapshot (1 PM CT)



High Temperatures Thurs.



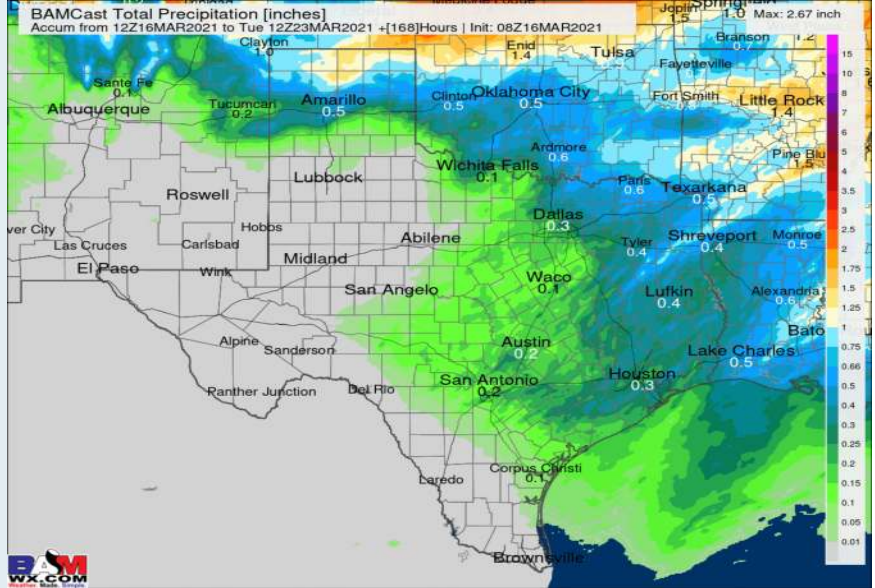
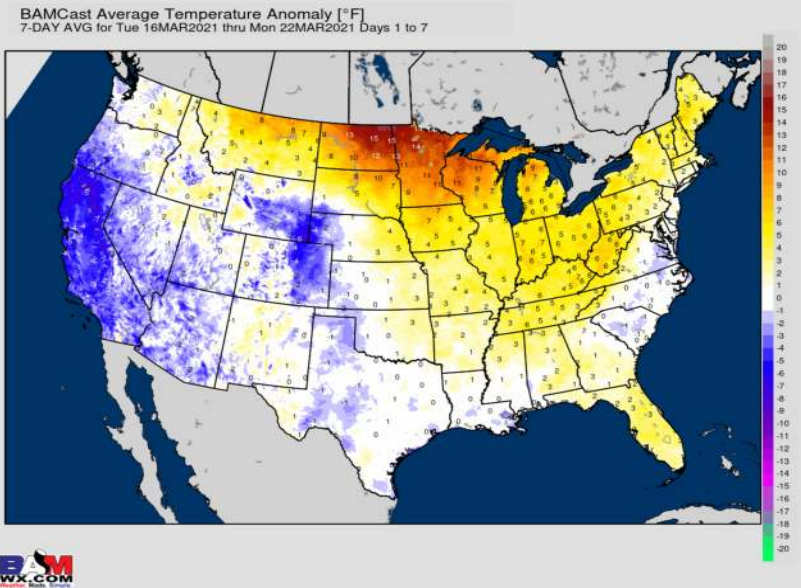
Long-Range Forecast Discussion

- The first half of this week will be much more active than the back half. We are watching precip chances out through Wednesday (best overall chances this week), when a front works through and will usher precip chances out of the area. At this distance, favoring Thu- Sun to be on the drier side. Temps likely sit near normal

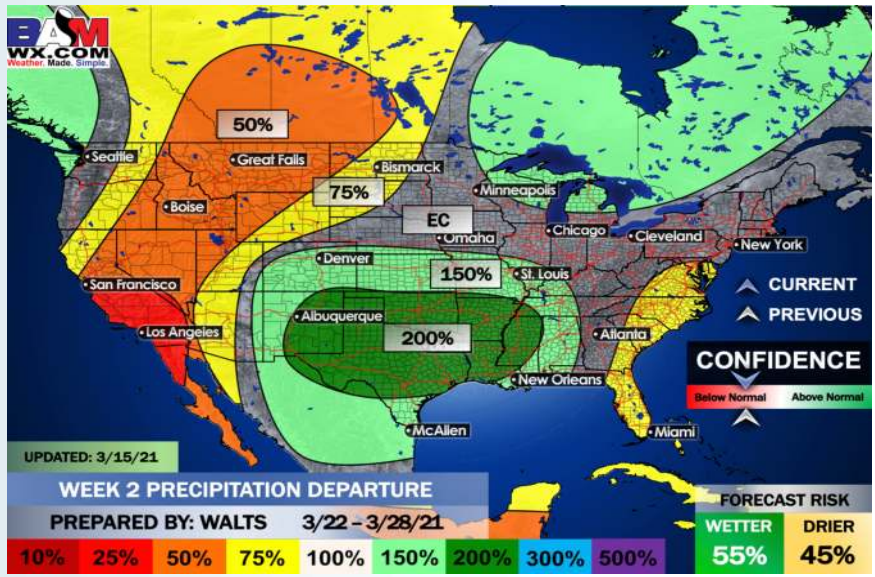
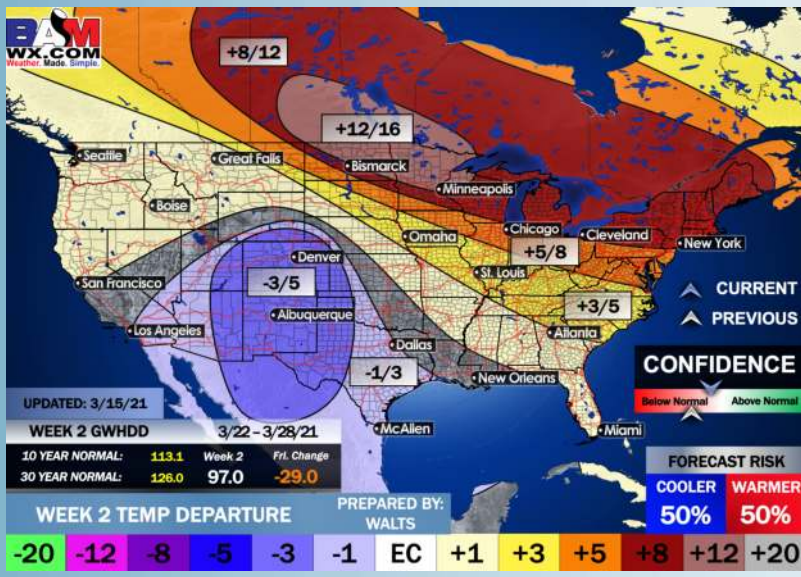
- The week 2 timeframe will offer up some precipitation risks across the area continuing, while keeping temps near normal to slightly below normal at times too.

- The end of March/ early April will feature a more active subtropical jet with increased moisture risk. Temperatures are expected to be warmer than normal.

Week 1 Forecast



Week 2 Forecast



Weeks 3/4 Forecast

